

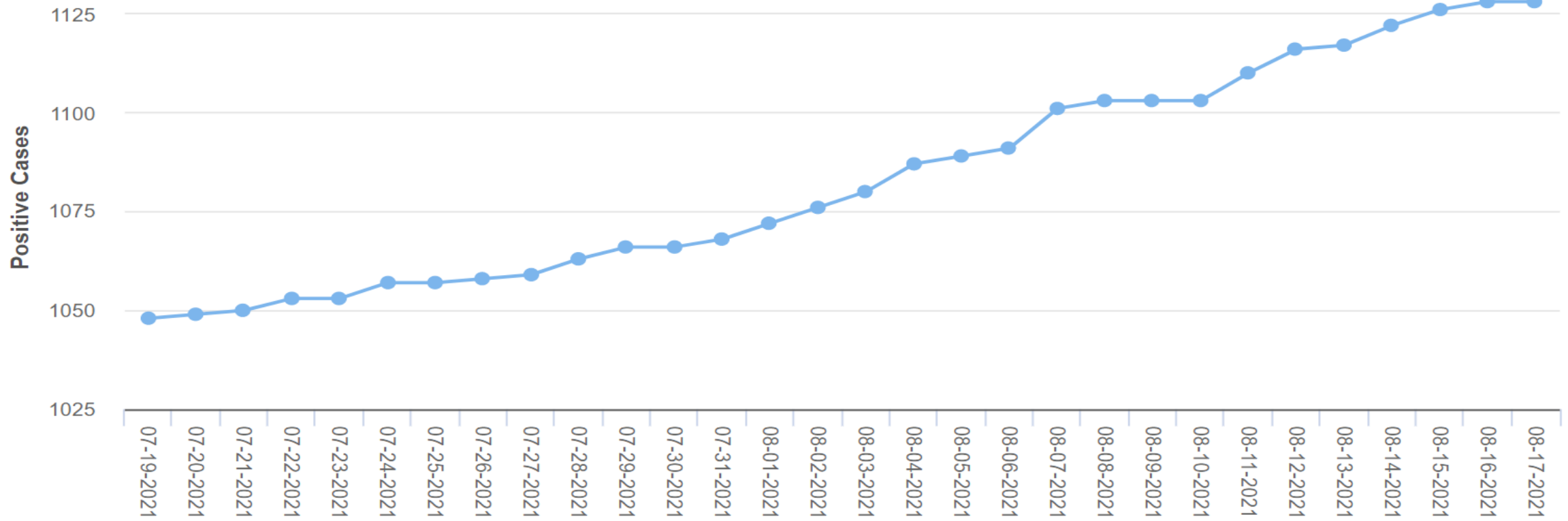


# TOWN COUNCIL COVID-19 UPDATE

**AUGUST 18, 2021**

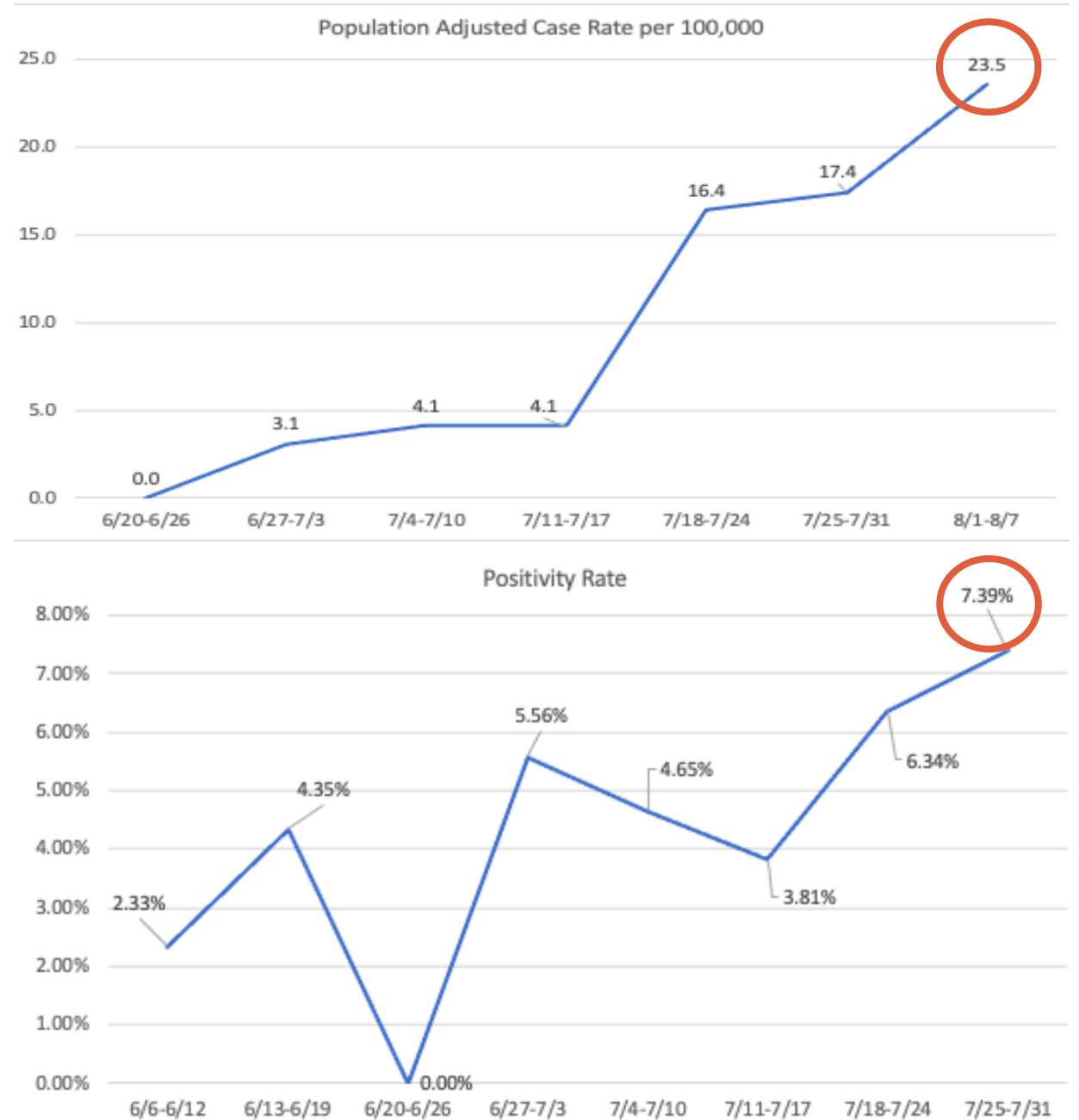


## Total Positive Cases for Mono County Residents (last 30 d...



**TOTAL POSITIVE CASES: 1128 (INCREASE IN CASES: 80 OR 7.63%)**

# MONO COUNTY COVID-19 TRANSMISSION RATES



# CDC INDICATORS AND THRESHOLDS FOR COMMUNITY TRANSMISSION OF COVID-19 TO GUIDE MASKS FOR PUBLIC INDOOR SETTINGS BASED ON VACCINATION STATUS

Indicator	Low transmission	Moderate transmission	Substantial transmission	High transmission
<u>Daily case rate</u>	< 1.5	1.5–6.9	7–13.9	> 14
Test positivity	< 5.0%	5.0%–7.9%	8.0%–9.9%	≥ 10%
Unvaccinated	Mask Required	Mask Required	Mask Required	Mask Required
Fully vaccinated	Mask Optional	Mask Recommended	Mask Required	Mask Required

# COVID-19 HOSPITALIZATION & ICU BEDS IN CALIFORNIA

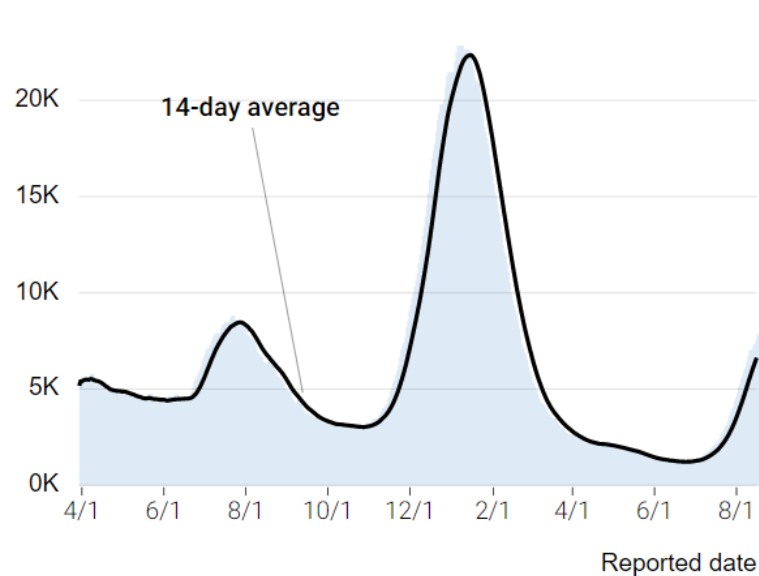
## COVID-19 hospitalized patients in California

Hospitalized

[ICU](#)

**7,837** COVID-19 hospitalized patients

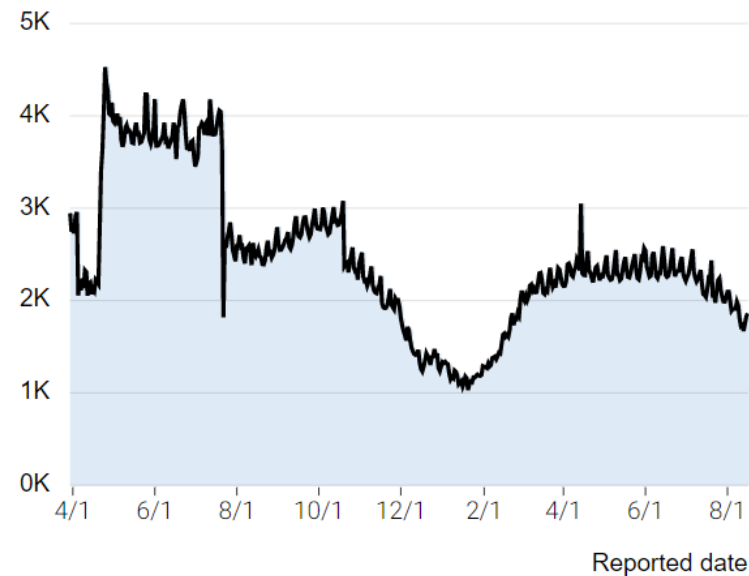
262 more patients hospitalized from prior day total (3.5% increase)



## ICU beds in California

**1,861** ICU beds available

34 more ICU beds available from prior day total (1.9% increase)



**Mammoth Hospital**

No hospitalizations at the current time

Increase in COVID-19 ER visits by visitors

Transferring hospitals have limited ICU capacity

# CDPH REQUIREMENTS FOR MASKING – REGARDLESS OF VACCINATION STATUS



**Effective July 28, 2021** - Masks are **required** for all individuals in the following indoor settings, regardless of vaccination status:

- On public transit (airplanes, ships, ferries, trains, subways, buses, taxis, and ride-shares) and in transportation hubs (examples: airport, bus terminal, marina, train station, seaport or other port, subway station, or any other area that provides transportation)
- **Indoors** in K-12 schools, childcare
- Emergency shelters and cooling centers
- Masks are **required for all individuals**, in the following indoor settings, regardless of vaccination status (and surgical masks are recommended):
  - Healthcare settings
  - State and local correctional facilities and detention centers
  - Homeless shelters
  - Long Term Care Settings & Adult and Senior Care Facilities

# MONO COUNTY HEALTH ORDER – EFFECTIVE AUGUST 6

In response to increasing COVID-19 cases locally and statewide, coupled with the added concerns of the Delta variant, as well as a number of “breakthrough” cases (positive COVID-19 cases in fully vaccinated individuals), Mono County issued a Local Health Order requiring the use of face coverings for both vaccinated and unvaccinated residents and visitors within indoor public spaces.

This Order will remain in effect until rescinded, in writing, by the Mono County Health Officer based on three consecutive weeks of adjusted case of below 6.9 per 100,000.

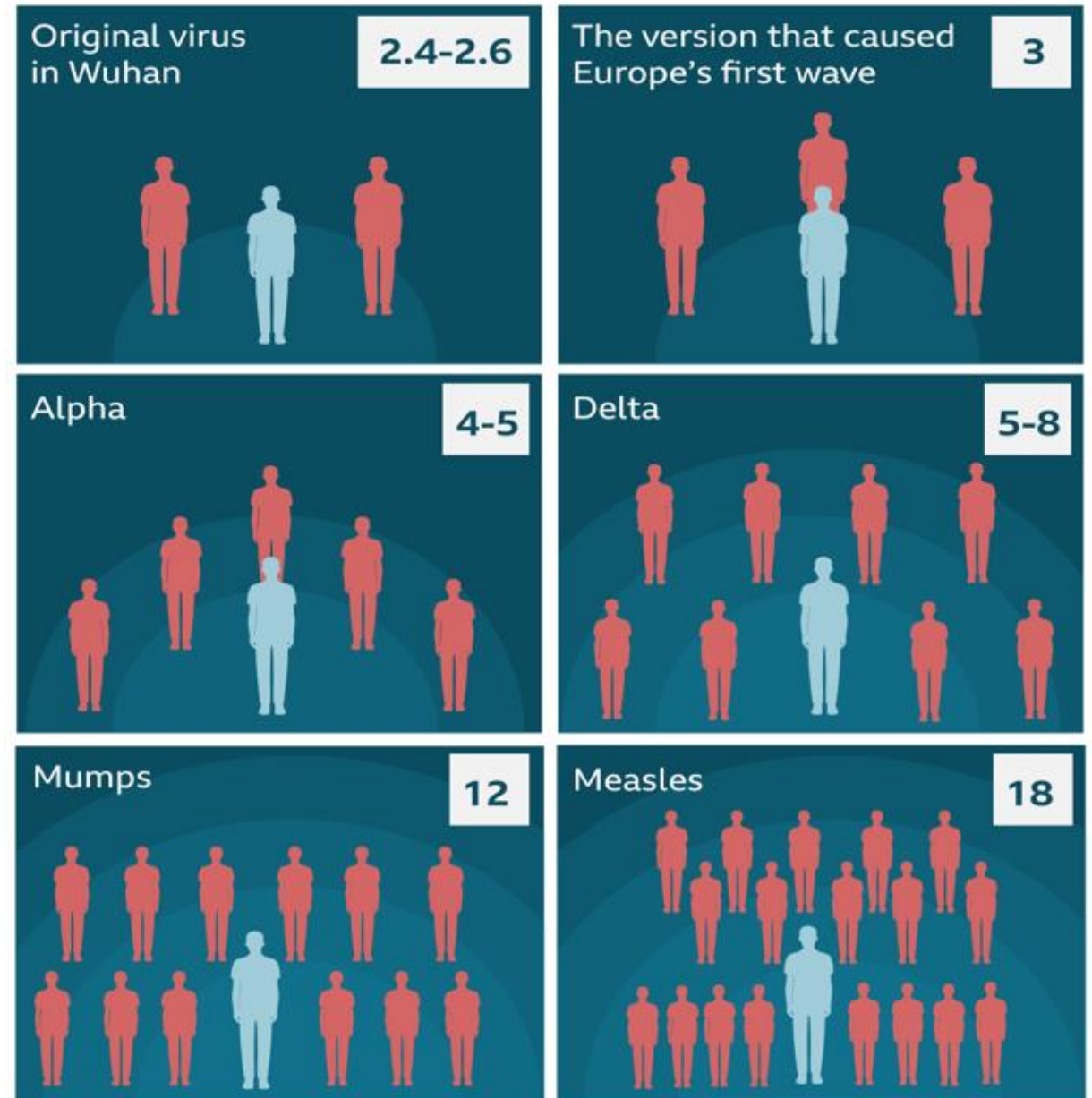
- All persons within Mono County and the Town of Mammoth Lakes, regardless of vaccination status, shall wear face coverings **while in indoor public settings, venues, gatherings, and businesses** (examples include offices, retail, restaurants, theaters, family entertainment centers and meetings, among others).
- Individuals, businesses, venue operators, or hosts of public indoor settings must require all patrons to wear masks, for all indoor settings, regardless of their vaccination status, and post clearly visible and easy to read signage at all entry points to communicate the masking requirements for patrons.
- Recommendation: It is **recommended** that all persons wear face coverings while attending large outdoor public events.

# WHY WE NEED TO MASK

- The Delta variant is the dominant strain of COVID-19 and a **strain of concern**.
- The COVID vaccines are less effective in preventing infection with an **efficacy rate of 64 - 79%**.
- Mono County and nationally are experiencing an **increasing rate of breakthrough cases**.
- Vaccinated and unvaccinated individuals have the **same viral load** and can both transmit the virus to 5 to 8 others
- The Delta variant is **2-fold more transmissible** and causes more severe disease.
- Numerous positive covid cases among our visitors
- Are exemptions: Under 2yrs old; Medical conditions, Hearing impaired or Health risk due to work

# DELTA VARIANT IS HIGHLY TRANSMISSIBLE

- $R_0$ , pronounced “R naught,” is a mathematical term that indicates how contagious an infectious disease is.
- It’s also referred to as the reproduction number.
- As an infection is transmitted to new people, it reproduces itself.
- **$R_0$  tells you the average number of people who will contract a contagious disease from one person with that disease.**
- It specifically applies to a population of people who were previously free of infection and haven’t been vaccinated.



# UPDATED BUSINESS MASK FLYERS



Business

## #COVERUPMONO

### Protecting Our Community

Per Mono County Health Order Dated August 6, 2021:

**You Must  
Wear A Face  
Covering To  
Enter This  
Establishment**

**REGARDLESS OF VACCINATION STATUS**

Download this sign for your business at:  
[Coronavirus.MonoCounty.ca.gov](https://Coronavirus.MonoCounty.ca.gov)

**Thank You!**



WEAR  
A MASK



WASH YOUR  
HANDS



KEEP PHYSICAL  
DISTANCE



COUGH/SNEEZE AWAY  
INTO YOUR ELBOW



OPEN WINDOWS AS  
MUCH AS POSSIBLE



MonoHealth.com/  
**Coronavirus**  
MONO COUNTY  
COVID-19 Resource Portal

## #COVERUPMONO

### Protegiendo Nuestra Comunidad

La Orden de Salud del Condado de Mono con la Fecha del 6 de Agosto del 2021:

**Debe Usar Una  
Cubierta Facial  
Para Entrar a  
Este  
Establecimiento**

**INDEPENDIENTEMENTE DEL ESTADO DE VACUNACION**

Descarga este cartel para tu negocio:  
[Coronavirus.MonoCounty.ca.gov](https://Coronavirus.MonoCounty.ca.gov)

**Gracias!**



USE UNA  
MASCARA



LAVA TUS  
MANOS



MANTENER  
DISTANCIA



TOSER/ESTORNUDAR  
EN EL CODO



ABRA LAS VENTANAS  
LO MAS POSIBLE



MonoHealth.com/  
**Coronavirus**  
MONO COUNTY  
COVID-19 Resource Portal

# Why Vaccinate?

## Mono county covid-19 Vaccine dashboard

- The vaccine is the best way to prevent severe illness, hospitalizations, and death.
- The vaccines are **81% to 96% effective** in preventing the above.
- The best way to prevent illness in unvaccinated populations such as those under 12 years of age and those with certain health conditions.

Mono County Public Health has received **17,560 doses** of vaccine and issued:

- 8,471 first dose
- 8,229 fully vaccinated

### Mono County:

- Approx. 75% - 1 dose
- 68%+ fully vaccinated

# WALK-IN VACCINATION CLINICS

In response to increased demand, Mono County Public Health is hosting the following walk-in COVID-19 vaccine clinics over the next several months for individuals aged 12 and older. **Pfizer, Moderna, and Johnson & Johnson vaccines are all available.**

- **8/27/21:** Bridgeport Clinic (11:00am - 1:00pm) –  
Bridgeport Memorial Hall (73 North School Street)
- **8/27/21:** Mammoth Lakes Clinic (1:00 – 4:00pm) -  
The Village at Mammoth (6201 Minaret Road)

## Day of vaccination



- Bring a form of documentation with your name that matches the name on your appointment. Acceptable forms include: a driver's license, pay stub or utility bill.
- If your vaccine requires a second dose, ask when it will be scheduled.
- Prepare to wait 15-30 minutes after your shot to make sure you don't have a reaction to the vaccine.
- After your shot make sure to get your vaccination card.

Details: <https://coronavirus.monocounty.ca.gov/pages/vaccinations>

# WALK-IN VACCINATION CLINICS

- **9/03/21:** Mammoth Lakes Clinic (2:00 – 4:00pm) –  
Mammoth High School (365 Sierra Park Road)
- **9/23/21:** Bridgeport Clinic (11:00am – 1:00pm) –  
Bridgeport Memorial Hall (73 North School Street)
- **10/01/21:** Mammoth Lakes Clinic (2:00 – 4:00pm) –  
Mammoth High School (365 Sierra Park Road)
- **10/21/21:** Bridgeport Clinic (11:00am – 1:00pm) –  
Bridgeport Memorial Hall (73 North School Street)
- **11/05/21:** Mammoth Lakes Clinic (2:00 – 4:00pm) –  
Mammoth High School (365 Sierra Park Road)
- **11/18/21:** Bridgeport Clinic (11:00am – 1:00pm) –  
Bridgeport Memorial Hall (73 North School Street)

Let's get you there.  
Let's get to immunity.

#GetToImmunity #VaccinateALL58 #CaliforniaForAll

## After getting vaccinated

- If you experience mild side effects, it's a normal reaction to the vaccine. Doctors recommend taking over-the-counter pain relievers like acetaminophen or ibuprofen if you have any discomfort.
- Typically it takes two weeks for your body to build immunity against COVID-19 after your last dose.
- Take a photo of your vaccination card and keep in a safe place.
- **Continue to wear a mask,** wash your hands and practice physical distancing.



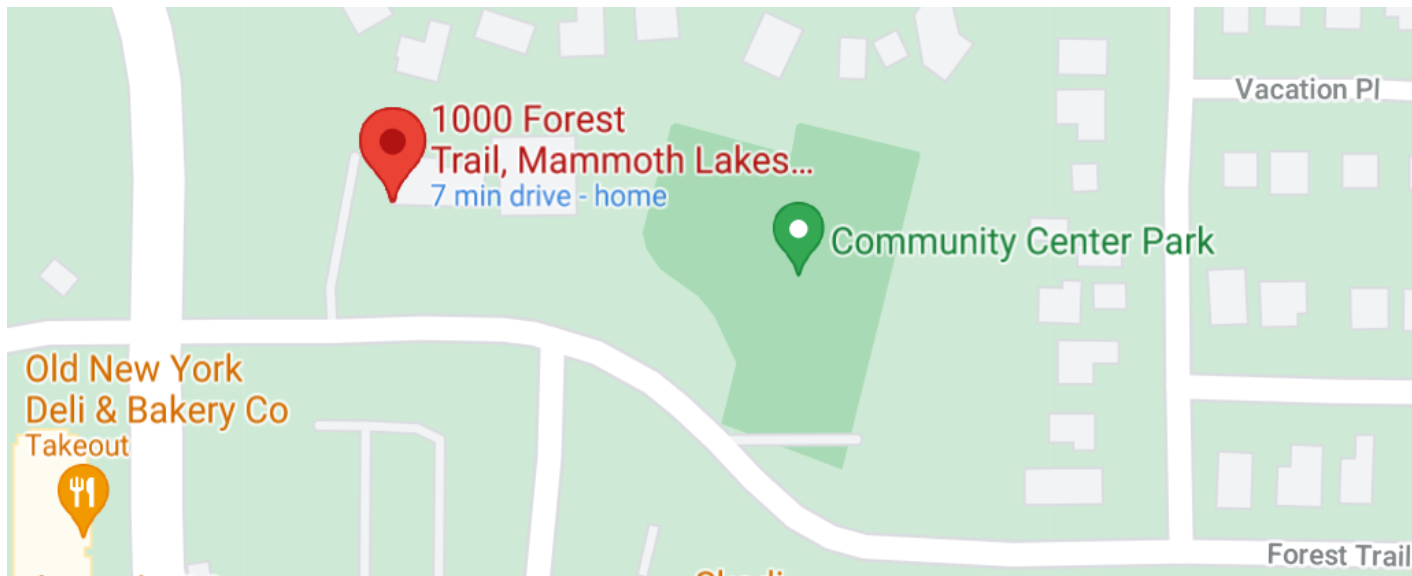
# OPTUMSERVE COVID-19 TESTING



OptumServe offers testing every **Tuesday, Wednesday, Friday, and Saturday** from **11am – 7pm** at the Mammoth Lakes Community Center (1000 Forest Trail).

The team usually takes a lunch break from 3pm - 4pm.

OptumServe pre-registration: <https://lhi.care/covidtesting>



# FREE MONO COUNTY COVID-19 TESTING – MONO COUNTY



Mono County Public Health is offering testing on **Wednesdays from 12pm - 2pm** at the following locations:

- **August 18** - Walker Community Center: 442 Mule Deer Road
- **August 25** - Chalfant Community Center: 123 Valley Road
- **September 1** - June Lake Community Center: 90 W. Granite Avenue

All testing is open to the public, regardless of insurance. Appointments are preferred, but walk-ins are welcome.

For the complete testing schedule, please visit: <https://coronavirus.monocounty.ca.gov/pages/health>

# FREE MONO COUNTY COVID-19 TESTING – MAMMOTH LAKES



Mono County Public Health is offering testing from the Public Health offices in Mammoth Lakes each week.

- **Days/Times:** **Mondays** 10:30am - 12:30pm and **Thursdays** 2:00 - 4:00pm (PCR and Antigen)
- **Location:** 1290 Tavern Road, Suite 246

All testing is open to the public, regardless of insurance. Appointments are preferred, but walk-ins are welcome.

For the complete testing schedule, please visit:

<https://coronavirus.monocounty.ca.gov/pages/health>



# SCHOOLS OPEN THURSDAY

- Schools in Mono County open for in-seat learning on Thursday, August 19
- Masking required by CDPH and Mono County
- Public Health is coordinating with the schools to provide best practices, contact tracing, and testing

## Back to School COVID Safe 7 Safety Layers to Keep Students and Schools Safer

As students head back to school for the 2021–22 school year, California schools will focus on these factors to keep students and school communities safer:



### COVID-19 vaccinations

The vaccine is the best protection against COVID-19. It is a safe and effective way to prevent serious illness and allows students to get back to enjoying the things they love most, including school sports, clubs, and social events. Your child can get the vaccine if they are age 12 or older.

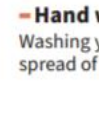
### Masks

Masks are required to be worn indoors for all K–12 students and staff. Masks are simple and very effective. They keep the virus from spreading in the air from one person to another indoors.



### Ventilation

Good airflow in classrooms and school buildings helps remove air that may contain the virus and replaces it with healthy air for your child.



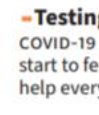
### Hand washing

Washing your hands regularly reduces the amount of germs on your hands to prevent the spread of COVID-19 from touching surfaces or others.



### Staying home when sick

If your child feels sick, keep them home from school so that they can get better faster. Ask the school if your child needs COVID-19 testing before coming back.



### Testing

COVID-19 testing can detect the virus even before your child or other students or teachers start to feel sick. Schools that do regular testing with unvaccinated students and teachers help everyone stay safer and stay in school.



### Contact tracing

Your child's school or local health department will notify parents and teachers who had close contact with someone on campus who tested positive for COVID-19.



Visit the  
Safe Schools  
for All Hub



# MONO COUNTY COVID-19 LOCAL INFORMATION & RESOURCES



**MonoHealth.com/  
Coronavirus**  
**MONO COUNTY**  
COVID-19 Resource Portal



**MonoHealth.com/  
Coronavirus-es**  
**CONDADO DE MONO**  
COVID-19 Portal de recursos

- 211: Nurse Line - Monday through Friday 8am – 5pm
- Website: [MonoHealth.com/Coronavirus](https://monohealth.com/Coronavirus)
- Spanish: <https://monohealth.com/coronavirus-es>
- Facebook: <https://www.facebook.com/monohealthdepartment>
- Email: [COVID19Help@mono.ca.gov](mailto:COVID19Help@mono.ca.gov)