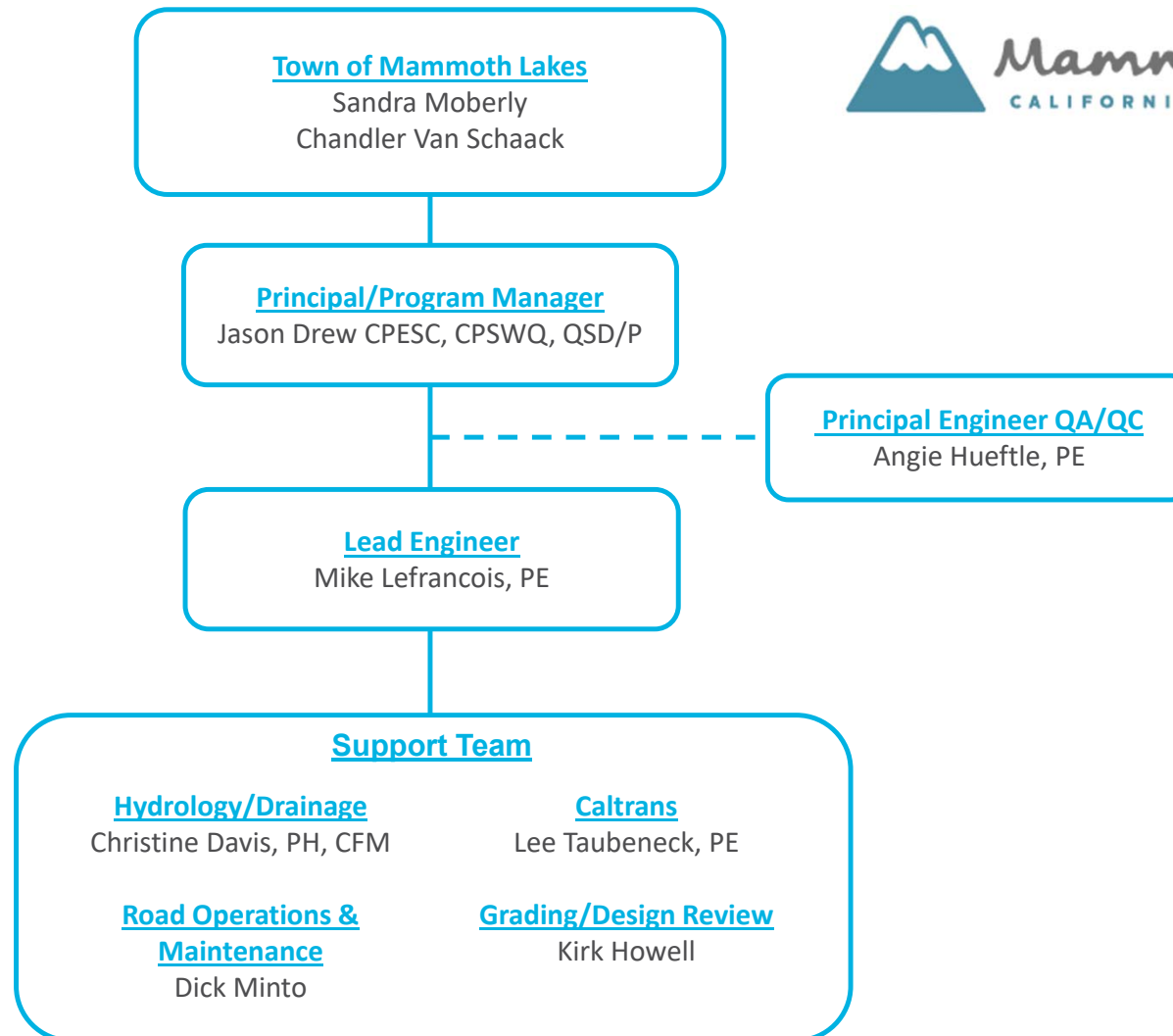


MAMMOTH MAIN LODGE REDEVELOPMENT ENTITLEMENT PROCESS  
ENGINEERING SUPPORT PRIORITY WORK ITEMS

- **Project Management/Coordination** - Status check-ins with Town staff, bi-weekly meetings with the Town and project proponent, ad hoc meetings with the Town/project proponent/EIS consultant, internal team communication, invoicing, reporting, etc.
- **Engineering Representation** - Function as Engineer of Record/Town Engineer on behalf of Town for the project. Answer applicant questions and provide guidance and recommendations to Town staff, management and council regarding engineering, design, and considerations for Town operations and maintenance. Interface regularly with Town engineering staff (not conflicted out of project) to discuss Town design standards and interpretations of application to Redevelopment Project. Utilize standard Town Engineering documentation to respond to applicant questions/communications and to communicate internal guidance, recommendations, and considerations.
- **Technical Review Support** - Perform engineering, drainage, operations, maintenance, and utility related reviews during the entitlement process. Prepare review/recommendation memo for each review along with necessary meetings/discussions. Utilize existing Town review checklists or forms, or work with Town staff to develop consistent review checklist for design plan, engineering drawing, specifications, or cost estimate submittals.
- **Caltrans SR 203 coordination** - Reviews, negotiations, and meetings with Town staff, Caltrans, Applicant and constituents associated with considering and or accepting ownership of the State Route 203. Development and discussion of benefit/drawback considerations for the Town of alternative design alignments, and alternative right of way ownership scenarios. Guidance on relinquishment process/report should the Town decide to accept the roadway.
- **CEQA and NEPA Review** – Review and provide comments on CEQA and NEPA documents prepared by the applicant, USFS, or others. Participate in discussions about impacts and proposed mitigation measures.
- **Subdivision Maps** – Communicate with the Town and applicant on questions and clarifications during subdivision map development. Review and provide recommendations on the applicants submittals related to subdivision process and mapping.

- **Council/Public Meetings** - Preparation of material/recommendations/talking points/presentations for Town staff. Participation in meetings as necessary. Support of Town staff in preparation for and execution of meetings with individual Council members, community leaders, property owners, or businesses related to the Project.



## Jason Drew, CPESC, CPSWQ, QSD/QSP

### Principal

While spending two summers after undergraduate school, working as an outdoor guide in Wyoming, Jason Drew had a realization; that his passion for the outdoors could translate into a fulfilling career. Inspired by professionals he met in hydrology, restoration ecology and natural resources management, he decided to pursue a future in environmental science and engineering.

Since joining NCE, Jason has successfully delivered a variety of projects, from large scale engineering and restoration projects to stormwater management plans and small-acreage resource assessments. The Practice lead for NCE's Watershed Science & Planning service line, Jason has also worked in the government, non-profit and private sectors, bringing a unique perspective to his clients and projects.

A natural problem solver, Jason enjoys "figuring out complex issues and putting improvements on the ground." In addition to his technical expertise, his strengths include his ability to understand the overall vision of a project, while staying organized and following through. His clients appreciate his ability to anticipate and address potential issues and the sense of ownership he takes with each project.

## Representative Projects

### Stormwater Master Plan

*Town of Mammoth Lakes, CA*

Project Manager. As a small alpine community with limited resources, the Town of Mammoth Lakes faced numerous challenges including regulatory compliance needs, erosion and flooding, and aging and inadequate infrastructure. Working on a tight time frame that allowed the Town to obtain grant funding, NCE prepared a management strategy, focused the Town's programs and identified projects to address the most pressing priorities. NCE work included mapping storm drain infrastructure, developing O&M standard operating procedures, formalizing a construction site program, identifying capital improvement projects, and creating a proactive approach to stormwater compliance.

### Drainage Master Plan

*City of Bishop, CA*

Project Manager. The City of Bishop made the decision to prioritize stormwater and drainage planning within their jurisdiction but faced an enormous challenge as the City had no established drainage standards, no information on the existing capacity of the storm drain system, limited GIS data, and lacked any formal grading or stormwater program. As a result the City commissioned the development of a Drainage Master Plan to include documentation of drainage and stormwater regulations pertinent to the City, reasonable City specific drainage design standards, a complete and accurate storm drain geodatabase, a full capacity analysis of the existing system and capital improvement project (CIP) recommendations.

### Stormwater & Drainage Planning

*Town of Mammoth Lakes, CA*

Project Manager. Through field analysis and ArcGIS and AutoCAD mapping, NCE developed recommendations for high priority erosion and flooding problems in the Town of Mammoth Lakes. In addition, NCE reviewed the Town's Storm Drain Master Plan, recommending enhancements and implementation priorities. NCE also helped Public Works staff identify grant opportunities for future phases. In addition to project management, Jason's responsibilities included leading the field assessment



### Education

MS, Environmental Science,  
Washington State University, 2001  
BS, Health and Safety, University of  
Wisconsin, Stevens Point, 1998  
Certificate in Public Management,  
University of Nevada, Reno, 2005

### Registrations and Certifications

Certified Professional in Erosion and  
Sediment Control (CPESC), #3755  
Certified Professional in Storm  
Water Quality (CPSWQ), #0917  
Qualified SWPPP  
Developer/Qualified SWPPP  
Practitioner (QSD/QSP), CA #00639  
Certified Wetland Delineator

### Affiliations

California Stormwater Quality  
Association  
International Erosion Control  
Association  
California Society for Ecological  
Restoration  
American Public Works Association  
American Water Resources  
Association

### Joined NCE

2006

### Total Years of Experience

20 years

of existing facilities, erosion sources, water quality problem sites and flood-prone areas; preparing existing conditions and recommendations; and presenting results to staff and the Town Council.

#### **Homewood Mountain Resort Redevelopment**

*JMA Ventures, Homewood, CA*

Principal. Homewood Mountain Resort is implementing a mountain wide redevelopment project that includes new base amenities (hotel, retail, residential, restaurant, gathering spaces), on mountain improvements (chairlifts, recreation facilities, mid-mountain lodge), roadways, parking facilities, trails, and utilities. NCE supported the project with engineering, planning and environmental services through the initial agency engagement and project entitlement process. NCE continues to support the phased implementation of the project with planning, engineering, permitting, and construction support services. Engineering design has included roadway and utility infrastructure, parking facilities, multi-unit lodge, underground parking, trails, drainage, erosion control, and creek restoration. Planning and permitting work have included guiding variances through development review and the planning commission and obtaining permits from Placer County, Lahontan Regional Water Quality Control Board, US Army Corps of Engineers, California Department of Fish & Wildlife, and the Tahoe Regional Planning Agency.

#### **Sierra Colina Village Development**

*QMO LLC, Douglas County, NV*

Project Manager. As the lead planning and civil design consultant, NCE provided land planning, regulatory compliance and civil design for the entitlement process and preliminary development of a residential subdivision on an 18-acre parcel located in the Lake Tahoe Basin. Our work included guiding the project through Tahoe Regional Planning Agency environmental review (Environmental Impact Statement), two-step subdivision, and planning commission approval. The project involved over 40 high end residential housing units, new residential roadway, right-of-way reduction, public utility easement abandonment, restriping of Highway 50, stormwater approach, drainage design, and permit compliance. NCE prepared full civil engineering design plans and obtained permits from Douglas County and the Nevada Division of Environmental Protection.

#### **Edgewood Tahoe Resort Redevelopment**

*Edgewood Companies, Douglas County, NV*

Project Manager. The Edgewood Tahoe Resort Project is one of the largest redevelopment projects to occur on the south shore of Lake Tahoe. The two-part project involved 1) a redevelopment component that included a new lodge with 154 rooms including a spa, restaurant, and pool terrace; 10 villas each with multiple units and associated patio amenities; an expanded clubhouse with event lawn; infrastructure and utility improvements; new roads and pedestrian facilities, and upgrades to the golf course including hole realignments, revamped tee boxes, and an new irrigation system and 2) an environmental improvement component termed "Threshold Projects" which included creek and wetland restoration, fish passage structures, aquatic habitat creation, pond dredging, and water quality improvements. NCE was responsible for planning, design, permitting, and construction support services for all aspects of the redevelopment project. Our design team prepared schematic design, design development, and construction documents and worked closely with local and state review agencies to address infrastructure, drainage, and access issues. Our team also prepared and submitted required permit applications to local, state and federal agencies along with supporting permit compliance during and after construction.

#### **Hard Rock Lake Tahoe Redevelopment**

*Neva One LLC, Douglas County, NV*

Project Manager. NCE was the lead planning and civil design consultant for the redevelopment of this large casino resort property. The Project included a complete interior and exterior remodel of the hotel structure (including both towers) along with new utility infrastructure, access drives, drainage improvements, and patio terraces. NCE prepared civil design plans and guided the project through permitting. Our work included obtaining approval from the Tahoe Regional Planning Agency for conversions of commercial floor area and from the Nevada Department of Transportation for realigned access points along US Highway 50.

### **Park Tahoe Inn & Park 968 Redevelopment**

*NBT-ERI Tahoe, South Lake Tahoe, CA*

Project Manager. Multiple adjacent resort properties were purchased and the owner desired to integrate the properties to improve function and the guest experience. NCE was responsible for planning and permitting of the proposed improvements, that included reconfiguring access and parking, consolidating and upgrading pool terraces, adding a new restaurant, and implementing drainage improvements, with the City of South Lake Tahoe and the Tahoe Regional Planning Agency. Our team lead communications with agency staff, prepared permit applications, and represented the Project through agency review hearings and council meetings.

### **Bently Master Planning and Zoning**

*Bently Agrowdynamics, Douglas County, NV*

Project Manager. As one of the largest and most active land owner/operators in the Carson Valley portion of Douglas County, Bently Agrowdynamics needed to plan for the future of its land holdings, many of which were included in the County's 10-Year Master Plan Update as candidates for Master Plan and Zoning revisions. NCE prepared and submitted the Master Plan Map Amendment and Zoning Map Amendment Applications. This required extensive geographic information system data analysis and mapping, legal descriptions, traffic study and interpretation of the master plan and Title 20 of the Consolidated Development Code. NCE facilitated preliminary application and scoping meetings with County Planning and Engineering Staff and participated in Planning Commission and Board of Commissioner hearings.

## Angie Hueftle, PE

### Principal Engineer

Angie knew she would be a civil engineer upon graduating high school, when—noticing her skills in math and science—her teachers encouraged her to pursue a degree in engineering. Angie has applied those skills on a wide range of land development and public works projects, such as permitting, site development, underground utilities, pedestrian improvements, and transportation projects. She has managed multiple large-scale infrastructure projects for clients including the Regional Transportation Commission of Washoe County, City of Sparks, and Washoe County.

Goal-driven with attention to detail, Angie enjoys “delivering high quality construction drawings and specifications that result in no change orders during construction.” With a comprehensive, responsive, and efficient approach to project management, she meets projects’ often accelerated schedules by effectively allocating resources and planning effectively for deadlines. Clients have expressed appreciation for Angie’s responsiveness, high level of engagement and preparation, and quality of deliverables.

## Representative Projects

### Homewood Mountain Resort Redevelopment

*JMA Ventures, Homewood, CA*

Project Manager. Homewood Mountain Resort is implementing a mountain wide redevelopment project that includes new base amenities (hotel, retail, residential, restaurant, gathering spaces), on mountain improvements (chairlifts, recreation facilities, mid-mountain lodge), roadways, parking facilities, trails, and utilities. NCE supported the project with engineering, planning and environmental services through the initial agency engagement and project entitlement process. NCE continues to support the phased implementation of the project with planning, engineering, permitting, and construction support services. Engineering design has included roadway and utility infrastructure, parking facilities, multi-unit lodge, underground parking, trails, drainage, erosion control, and creek restoration. Planning and permitting work have included guiding variances through development review and the planning commission and obtaining permits from Placer County, Lahontan Regional Water Quality Control Board, US Army Corps of Engineers, California Department of Fish & Wildlife, and the Tahoe Regional Planning Agency.

### Edgewood Tahoe Resort Redevelopment

*Edgewood Companies, Douglas County, NV*

Engineer of Record. The Edgewood Tahoe Resort Project is one of the largest redevelopment projects to occur on the south shore of Lake Tahoe. The two-part project involved 1) a redevelopment component that included a new lodge with 154 rooms including a spa, restaurant, and pool terrace; 10 villas each with multiple units and associated patio amenities; an expanded clubhouse with event lawn; infrastructure and utility improvements; new roads and pedestrian facilities, and upgrades to the golf course including hole realignments, revamped tee boxes, and an new irrigation system and 2) an environmental improvement component termed “Threshold Projects” which included creek and wetland restoration, fish passage structures, aquatic habitat creation, pond dredging, and water quality improvements. NCE was responsible for planning, design, permitting, and construction support services for all aspects of the redevelopment project. Our design team prepared schematic design, design development, and construction



#### Education

BS, Civil Engineering, University of Nevada, Reno, 1995

#### Registrations and Certifications

Professional Engineer – Civil, NV  
#14127

Professional Engineer – Civil, CA  
#82432

#### Affiliations

American Society of Civil Engineers  
Nevada Water Resources  
Association  
American Public Works Association

#### Joined NCE

2007

#### Total Years of Experience

26 years



documents and worked closely with local and state review agencies to address infrastructure, drainage, and access issues. Our team also prepared and submitted required permit applications to local, state and federal agencies along with supporting permit compliance during and after construction.

#### **Virginia Street Bus RAPID Transit Extension**

*Regional Transportation Commission of Washoe County, NV*

Project Manager. NCE prepared the environmental document, preliminary and final engineering design of the Virginia Street Bus RAPID Transit Extension project that increases mobility and safety along the corridor. The project includes the extension of RTC RAPID service from the 4<sup>th</sup> Street Station to the University of Nevada Reno (UNR) with new transit stations, roadway reconstruction, intersection and signal modifications, landscaping and aesthetics, pedestrian improvements and lighting, bicycle improvements, parking and access management, utility relocations, and drainage improvements. The \$60 million project area covers Virginia Street from Plumb Lane to Liberty Street and from Maple Street to north of the Lawlor Events Center, as well as portions of Center Street, East and West Arroyo Street, Caliente Street, Martin Street, La Rue Avenue, Cheney Street, Saint Lawrence Avenue, Tahoe Street, Moran Street and Stewart Street. In addition to project management, Angie was responsible for coordinating the extensive public outreach and stakeholder coordination required for this federally-funded project and was the engineer of record.

#### **Sierra Boulevard Complete Streets**

*City of South Lake Tahoe, CA*

QC Reviewer. This project consisted of planning, public outreach, design and permitting for full rehabilitation of Sierra Boulevard, an approximately 0.63-mile arterial road. Sierra Boulevard incorporated design features meant to enable safe, convenient and comfortable travel access for multiple users, including pedestrians, bicyclists and motorists. The design elements included stormwater treatment and conveyance, bike lanes, multi-use paths, pavement rehabilitation, landscaping and path lighting. A NEPA Categorical Exclusion and CEQA MND was prepared along with technical studies for H&H, drainage facilities design, civil PS&E, geotechnical report, traffic study and alternatives assessment, utility coordination, constructability review, liaison to Caltrans throughout the E-76 process and bid assistance.

#### **Hardie Lane Reconstruction**

*City of Fernley, NV*

Project Manager. Hardie Lane is a critical north/south residential collector street that serves multiple modes of transportation due to adjacent schools along the route. Lacking infrastructure for pedestrian safety, it did not meet the requirements of the Americans with Disabilities Act. This project improved the safety along the corridor, adding pedestrian and bicycle facilities, reconstructing the roadway, improving infrastructure, and relocating utilities. The federally funded project required compliance with the Local Public Agency guidelines and included public outreach, right-of-way engineering, and agency coordination. In addition to project management responsibilities, Angie facilitated public outreach and agency coordination, focusing on open and frequent communication throughout the process.

#### **Tahoe Pines Erosion Control - Phase A**

*Placer County Department of Public Works, CA*

Senior Engineer. This erosion control and water quality improvement project for a residential subdivision restored and retrofitted drainage improvements within the watershed of the County right-of-way. After analyzing conditions to understand the opportunities and constraints, NCE determined what areas needed Best Management Practices. The resulting design conformed to the Tahoe Regional Planning Agency Environmental Improvement Program for water quality retrofit. NCE prepared California Environmental Quality Act/National Environmental Policy Act compliance documents for both funding agencies (United States Forest Service and California Tahoe Conservancy) and followed guidelines set by the California Tahoe Conservancy, Placer County, and Lahontan Regional Water Quality Control Board.

#### **Markleeville Water Main Replacement Project**

*Markleeville, CA*

QC Reviewer. NCE provided civil engineering design, permitting and construction management services for approximately 3,250 feet of 8-inch water main to replace undersized mains throughout Markleeville. The project included an insulated waterline bridge crossing of Markleeville Creek, three crossings of Highway 89, replacement of valves, fire hydrants, services, radio-read meters and appurtenances. NCE successfully negotiated an encroachment permit with Caltrans that allowed open



cut of the three highway crossings resulting in a significant cost savings. Project funding was provided through Proposition 50 Grants administered by the State Water Resources Control Board.

#### **Waterline Replacement - Phases 1B, 1C, 1D, and 1E**

*Kingsbury General Improvement District, NV*

Project Manager. This four-year, phased project included replacing approximately 29,000 linear feet of 8- 16- inch waterlines, water services, fire hydrants, meter sets and pressure reducing vaults. Portions of the waterline encroached into Nevada Department of Transportation right-of-way and private property, requiring permitting and the preparation of legal descriptions for easements. In addition to project management, Angie's responsibilities included permitting, design, bidding and construction management services.

#### **Sewer Condition Assessment Services**

*City of Reno, NV*

Project Manager. NCE provided sewer condition assessment services to the City of Reno to update the information in the City's ArcMap database of existing small diameter sewer pipes. Using the City's condition rating system, NCE evaluated the CCTV videos provided by the City for more than 4,250 pipe segments totaling approximately 150 miles of pipe to assign sewer condition ratings and notes for each segment. The condition rating system uses a condition grade from 5 to 1 with 5 being "new or near new" and 1 being "failure imminent". Quality control reviews were performed by NCE on each day's production by an independent reviewer who viewed a random sampling of 10 to 15 percent of the segments rated for that day.

#### **Effluent Permitting, Management Plans, and Plan Review**

*City of Sparks, NV*

Project Manager. As part of an on-call/as-needed contract, NCE is providing effluent permitting services including preparation of effluent discharge permit applications, hydraulic model updates, effluent management plans and plan review services for the City of Sparks effluent pipeline distribution system.

#### **Spanish Springs Sewer Phase 1B**

*Washoe County Department of Water Resources, NV*

Project Manager. NCE provided design and permitting services for the extension of sanitary sewer to 167 single-family homes previously on individual septic systems in the Pyramid Ranch Estates subdivision of Spanish Springs. The design included 3,000 linear feet of 10-inch PVC sanitary sewer pipe, 6,500 linear feet of eight-inch PVC sanitary sewer pipe, 38 manholes, 167 4-inch sanitary sewer laterals, roadway resurfacing, signage and striping improvements.

#### **Effluent Reuse Infill Report Feasibility Study**

*City of Sparks, NV*

Project Manager. For this project, NCE determined the feasibility and preliminary costs of delivering effluent irrigation water to schools and parks throughout the city, identifying nine preliminary pipeline alignments to serve 17 parks and 16 schools. The report included irrigation demands, preliminary construction cost estimates and preliminary annual effluent costs for each user.

#### **Bio-fueling Station**

*Bently Biofuels Company, NV*

Project Manager. NCE provided civil engineering design and permitting for utilities and site improvements for a bio-fueling station (including fueling islands for bio-diesel and ethanol blends) and a 3,500-square-foot convenience store in the Carson Valley north of Minden. The project followed the Leadership in Energy and Environmental Design certification process and attained a gold level of certification from the U.S. Green Building Council.

## Mike Lefrancois, PE

### Senior Engineer

Mike Lefrancois, PE, has more than 20 years of experience in Public and Private sectors with design, engineering, environmental processing, permitting, estimating, bidding and construction oversight. He is successful in project management of capital improvement projects for IVGID Community Services and Public Works. He has developed plans and reviewed work by others including technical reports, engineering designs, specifications, and construction document packages with consultant teams. Mike has prepared board memorandums and grant applications, and has acted as a representative at meetings with state and local agencies.

### Representative Projects

#### Effluent Export Pipeline

*Incline Village General Improvement District, Incline Village, NV*

Senior Engineer. Mike administered \$500,000 non-destructive condition assessment contract for 6 miles of aging high-pressure steel treated effluent pipeline. He managed \$1.1M repair contract in State highway. He prepared supporting documents and represented district for pipeline conflict and construction support during construction of the East Shore Trail.

#### Community Services Projects

*Incline Village, NV*

Senior Engineer. Mike successfully managed various capital projects district-wide including beaches, golf, ski area, ballfields and parks. He prepared 5-year capital plans and monitored budget. He provided project reports to the Accounting Department. Mike managed senior staff through project delivery. He prepared and executed pavement management program. Projects include golf cart path systems, park safety, bocce ball courts, multipurpose trails, ballfield renovations, clubhouse renovations, swimming pools, backflow improvements and general ADA evaluations and TRPA permitting. He also provided supporting documents for Ski Area Master Plan, Federal Lands bills and administration offices evaluations.

#### Water Main Replacement CIP

*Incline Village General Improvement District, Incline Village, NV*

Senior Engineer. Mike managed scope, design, permitting, bidding and execution of several water main replacement contracts totaling \$5.4M and 21,000 linear feet. Work included CIPP evaluation, pipe bursting, boring and slip lining with fusible PVC and HDPE. He represented the District as engineer, community liaison and managed third-party inspection. Mike provided supporting documents for Federal Fire Flow Enhancement Grant applications, NEPA and SHPO review.

#### Kings Beach Commercial Core Improvement

*Kings Beach, CA*

Senior Engineer. Mike served as a local representative in review of \$40M redesign of Kings Beach downtown corridor. He was the former council member of the North Tahoe Regional Advisory Committee and Chair of the North Tahoe Business Association Design Committee. He was charged with creating community consensus on project alternatives. Mike supported Placer County moderator-led workshops and open houses.



#### Education

BS, Civil Engineering,  
University of Vermont, 1999

#### Registrations and Certifications

Professional Engineer – Civil, NV  
#20115  
Professional Engineer – Civil, CA  
#64162

#### Affiliations

Incline Village/Crystal Bay Citizens  
Advisory Board  
North Tahoe Regional Advisory  
Council (past)  
North Tahoe Business Association –  
Design Committee (past)  
Tahoe Truckee Engineers Association  
(past)

#### Joined NCE

2021

#### Total Years of Experience

20 years

### **Sewer Rehabilitation Capital Improvement Project**

*Incline Village General Improvement District, Incline Village, NV*

Senior Engineer. As part of an ongoing capital project, Mike managed condition assessment and rehabilitation contracts for collection system mains and manholes. He prepared bidding documents and construction contracts for sewer bypass and rehabilitation with CIPP. He tracked deficiencies through Nexgen work order system and ArcGIS.

### **Truckee-Tahoe Airport District Administration Building**

*Truckee-Tahoe Airport District, Truckee, CA*

Senior Engineer. Mike completed schematic design, design development and construction documents for this new facility at the Truckee-Tahoe Airport. Work included permit processing with local agencies. Work was successfully performed on a fast-track schedule in advance of local grading season limitations.

### **Multipurpose Trails**

*Tahoe City Public Utility District, Tahoe City, NV*

Senior Engineer. Mike prepared supporting documentation including plans and estimates for alternative analyses studies for the Meeks Bay, Homewood, and Sunnyside area trail proposals. He prepared exhibits and represented the District in public forums. He drafted construction documents and provided bidding support for the Upper Sequoia trail safety improvements on Caltrans Highway 89. Mike prepared permitted plans for new trail construction along a scenic corridor within the Tahoe basin. Challenges included narrow right-of-way and implementation of a video actuated vehicle warning system. Agency Processing through TRPA and Caltrans was performed.

### **Water and Sewer Pumping Improvements**

*Incline Village General Improvement District, Incline Village, NV*

Senior Engineer. As separate projects, Mike managed design and bidding of safety and reliability improvements replacing Motor Control Panels, VFDs and related controls at IVGID's only water treatment plant and our primary sewer pumping station. He assisted in design with owner review and input from IVGID operators.

### **Master Plan Facilities**

*Sierra Nevada University, Incline Village, NV*

Senior Engineer. Mike prepared site civil drawings for master plan facilities including the Prim Library and the LEED Platinum - Tahoe Center for Environmental Sciences. Work entailed interactive coordination with building design teams and client representatives and construction phase support, inspection and documentation. He designed water/sewer infrastructure to serve future facilities including fire protection backflow device. Mike averted construction schedule setbacks with successful implementation of a dewatering system designed to mitigate the discharge of excessive groundwater intercepted during excavation. He conducted processing with IVGID, Tahoe Regional Planning Agency (TRPA) and Washoe County approvals as well as provided LEED documentation related to our work.

### **Sugar Bowl Ski Area Capital Projects**

*Sugar Bowl Resort, Norden, CA*

Senior Engineer. As separate projects, Mike designed vehicle circulation, utility and drainage infrastructure for East Bay Parking Lot, Mt. Judah Ski Lodge expansion and Vehicle Maintenance facility. Parking Lot work extended over 5 acres for 300+ vehicle spaces and access roadways. Lodge expansion included new indoor dining, outside seating with snowmelt, drainage upgrades and a First Aid facility. Maintenance building project included snowcat access and circulation areas, fueling island and fuel storage improvements, access road and associated grading, drainage and utility design.

### **The Boulders Condominiums**

*DMG Development, Truckee CA*

Senior Engineer. Mike prepared tentative maps and preliminary grading, drainage and utilities plans for this phased residential development. He also prepared agency processing documents for Improvement Plans and final approvals. He provided engineering assistance with project cost estimating, bidding and construction.

### Woodbridge at Portola

*City of Portola, CA*

Senior Engineer. As part of a project team, Mike prepared water and wastewater infrastructure studies for this proposed residential project encompassing 400 acres and approximately 1,000 dwelling units in the City of Portola, CA. He provided calculations and estimates for Tentative Map development including a water system master plan for storage reservoirs, pumping and distribution. Work included hydraulic modeling with WaterCAD.

### Tahoe City Marina Improvements

*Tahoe Regional Planning Agency, Stateline, NV*

Property Owner's Representative. Mike collaborated with multiple design teams on several concurrent master plan projects including a parking garage, TCPUD pump station, marina expansion, multipurpose trail, and stormwater BMP retrofitting. Work included alternative studies, cost tracking and outside agency permitting. He prepared planning and environmental review documents. Mike successfully negotiated a cost-reducing stormwater treatment strategy with the Tahoe Regional Planning Agency (TRPA). He prepared construction documents for related improvements including water mains, fire protection, forced main sewer, stormwater pump station, grading, drainage, parking, circulation and erosion controls.

## Lee Taubeneck, PE, MS

### Associate Engineer

Mr. Taubeneck is a transportation professional with more than 30 years of experience in the development of expressways, freeways, roads, transit systems, multi-use paths, trails, sidewalks, streets, and highways. He has worked with public, private, and non-profit clients throughout California at the local, regional, and State levels. Lee's experience includes 25 years with Caltrans as an engineering specialist, supervisor, office chief, and ultimately the Deputy District Director for District 4. During his time with Caltrans Mr. Taubeneck oversaw design, advanced planning, local assistance, environmental, and capital projects.

### Representative Projects

#### Hillcrest Park Green Infrastructure and Trash Capture Project

*City of Concord, California*

Project Manager. Lead and coordinate the work of subconsultants in the design and construction of trash capture, bio-retention basin, parking lot rehabilitation, ADA upgrades, park enhancements, stormwater detention basin design, and irrigation system management. Maintain cost, scope and schedule. Assist on the identification of utility conflicts, the relocation of electric and gas mains, and utility agreements. Assist in PS&E checklist, Right-of-Way certification and RFA/e-76 with the City and Caltrans.

#### Rumrill Blvd Complete Streets and Green Infrastructure

*City of San Pablo, California*

QA/QC Reviewer and Utility Coordinator. Review 100% plans, specifications, and estimates for quality. Assist on the identification of utility conflicts, the relocation of water and gas mains, and utility agreements. Assist in PS&E checklist, Right-of-Way certification and RFA/e-76 with the City and Caltrans.

#### Iron Horse Parkway Interchange

*Prologis San Joaquin, California*

Project Manager. Preliminary layout, utility impact assessment, cost estimating, phasing, and agency coordination for a new interchange along I-580 in western San Joaquin County.

#### Nacimiento River Bridge Curve Correction

*Monterey County Public Works Department, Monterey, California*

Project Engineer. Assist in revisions of final PS&E package for a bridge replacement project with a curve correction in a remote area of Monterey County.

#### US 101/ State Route 25 Interchange

*Santa Clara Valley Transportation Authority, Santa Clara County*

Project Manager. Subconsultant as part of the prime's team responsible for UPRR and rail traffic coordination.

#### Retaining Wall 12 and (Elevated) Walkway 22

*Lawrence Berkeley National Laboratory, Berkeley, California*

Project Manager. Develop plans, specifications and cost estimate for the replacement of a walkway slumping above a steeply sloped historic landslide in the central part of the laboratory campus. A portion of the retaining wall supported the walkway and also a minor arterial of the laboratory.

#### C-line Traction Power Rehabilitation



#### Education

MS, Civil Engineering, University of California, Davis, 1983  
BA, Environmental Science, University of Virginia, 1979  
BA, American Government, University of Virginia, 1979

#### Registrations and Certifications

Professional Engineer – Civil, CA #C-043049  
Qualified SWPPP developer/Practitioner, CA-25478

#### Affiliations

Association of Bicycle and Pedestrian Professional, Member

American Society of Civil Engineers, San Francisco Chapter, San Jose Branch, Member

#### Joined NCE

2020

#### Total Years of Experience

37 years



*Bay Area Rapid Transit District, Alameda and Contra Costa Counties .*

Engineer-of-Record. Responsible for preparing traffic handling plan sheets and Basis-of-Design report consistent with MUTCD-CA requirements along a 6-mile segment of interurban commuter rail in the Cities of Oakland, Orinda, Lafayette and Contra Costa County.

**Central Avenue UPRR Overhead**

*City of Newark, Newark, California*

Utilities Coordinator. Subconsultant responsible to prime for relocation of multiple utilities (fiber optic, gas, OH-e, UG-e, telephone, cable, SS, and SD) and railroad coordination along the busy freight-passenger Coast rail Subdivision of UPRR in the City of Newark. Relocations were prompted by the grade separation of a minor arterial from the railroad.

**Mountain House Parkway/ I-205 Interchange and International Parkway/ I-580 Interchange, PA&ED (2)**

*City of Tracy, Tracy, California*

Project Manager. Draft and finalize the Traffic Technical Memorandum with Caltrans District 10 for both interchanges. Collect traffic data and update the traffic forecast. Draft the Traffic Operations Assessment Reports. Initiate environmental studies in support of two Mitigated Negative Declarations for CEQA and CE for NEPA. 2017-2018

**US 101/ Holly St Interchange**

*City of San Carlos, California*

Project Manager. Respond to 100% PS&E Comments. Draft responses to comments and work with project designers to update plans and specifications to incorporate comments, especially stormwater. Revise plans to reflect regulatory agency (SFRWQCB) comments. Prepare e76 for client execution and processing. Agency coordination with Caltrans. 2017-2018

**SR-99 Beautification Study**

*StanCOG, Modesto, CA*

Assist as Caltrans Liaison to prime consultant for plan enhance the economy through landscaping improvements throughout the 25 mile corridor of Stanislaus County. Prepared funding analysis, including SHOPP, STIP, and CTC investigations. Attended Steering Committee board meetings. Participated on development of recommendations. Authored appendix on Funding Opportunities.

**I-205 HOV PSR(PDS)**

*SJCOG, Stockton, California*

Coordinate sub-consultants in preparation of preliminary engineering for HOV widening between I-5 and I-580 in western San Joaquin County/ City of Tracy as part of 2018 STIP. Draft, circulate for comments, revise, and finalize PSR(PDS) including risk matrix, structures cost estimate, right-of-way conceptual cost estimate, and contingencies. 2017-2018

**US 101/ Rancho San Benito Parkway Interchange PSR(PDS), 2014-15**

*Private Developer/ SBTCOG, Hollister, California*

Deputy Project Manager. Storm water design, interchange geometrics and cross sections, new public road connection, schedule, and cost estimates, along with agency coordination (SBTCOG and Caltrans Districts 4 and 5). 2014-2015

**SR 25 Realignment and Widening PSR(PDS) n/o Hollister, CA**

*Private Developer/ SBTCOG/ VTA, Hollister, California*

Project Engineer. Scoping document author and utility/ agency coordination. Met with both Caltrans District 5 and San Benito Council of Governments regarding the project. 2015



**CALTRANS WORK EXPERIENCE****CALTRANS, State of California, District 4***Oakland, CA, 2006 - 2014*

Deputy District Director. Managerial lead person for Division of Transportation Planning and Local Assistance. Lead person for human resource and budgetary issues on 120+ person division of the nine-county San Francisco Bay area. Projects included BART-to-San Jose, High Speed Rail Section Reports (SF-SJ, SJ-Merced), BATA Integrated Corridor Management PSR(PDS), Richmond-San Rafael Third Lane, SR 152 Trade Corridor, the SFOBB Self-Anchored Suspension Span, SCI-101 Widening, I-580/ I-680 IC, I-880 Broadway-Jackson PSR(PDS), and annual OWPs for FHWA-MTC-FTA. Chairperson: District 4 Bicycle Advisory Committee. Chairperson: District 4 Pedestrian Advisory Committee. 2006 - 2014

**CALTRANS, State of California, District 4***Oakland, CA, 2005 - 2006*

Office Chief. Managerial lead person for Office of Advance Planning within the Division of Transportation Planning and Local Assistance. Responsible for the development of scoping documents for capital, operational improvement, and safety projects on the State Highway System. Projects included East Span SFOBB Skyway alternative, Ala-580 Managed Lanes, the Altamont Pass Truck Climbing Lanes as well as Richmond-San Rafael toll bridge bicycle/pedestrian access study and BCDC permits. 2005-2006

**CALTRANS, State of California, North Region***Natomas, CA 2001 - 2005*

Branch Chief. Supervisory lead person for a Design Branch of transportation engineers and student interns responsible for developing capital improvement project contract documents (plans, specifications, estimates) on the State Highway System.

**CALTRANS, State of California, HQ Design***Sacramento, CA 2000*

Geometrician. Facilitate requests for the incorporation of non-standard designs from Caltrans southern Districts with the HQ Project Development Procedures Coordinator for projects along the State Highway system. 2000-2001

**CALTRANS, State of California, HQ Maintenance***Sacramento, CA 1998 - 2000*

Facilities Branch Chief. Supervisory lead person responsible for coordinating improvements between Caltrans designers and maintenance facility locations. Facilities included maintenance stations, equipment service centers, salt sheds, sand sheds, toll plazas, and CHP/ agricultural inspection stations. 1998-2000

**CALTRANS, State of California, HQ Environmental***Sacramento, CA 1991 - 1995*

Sr. Transportation Engineer. Responsible for coordination of EIRs and EISs between Southern California Caltrans Districts and the California CTC. Also, the statewide lead person for stormwater impacts from construction and maintenance projects on the state highway system. Served as expert witness in the case of *Caltrans v. NRDC* in the Southern federal District Court, CA.

**CALTRANS, State of California, District 10***Stockton, CA 1989-1991*

Associate Transportation Engineer, Supervisory. Lead person for the physical sciences branch of the District environmental Office. Conducted water quality, hazardous waste, noise and air quality investigations for capital improvement projects throughout the lower San Joaquin Valley, the Sierra foothills, and the Sierra range. Collected samples and ran laboratory tests on their physical properties. Developed reports analyzing impacts to physical resources based on field data. Also ran computer models to project the response of physical environment to improvements of roadways and bridges. Principal investigator for the alternative salt (magnesium) de-icing application study with the Department for the Lahontan RWQCB.

## Christine Davis, PE, PH, CFM

### Project Engineer

Whether it be a mountain stream, a waterfall or the ocean's waves, Christine has always been drawn to water, making a career in hydrology the ideal fit for her interests. At NCE, Christine enjoys the variety of projects she works on alongside a group of talented colleagues that support and encourage each other. With most of her clients in public works, Christine finds fulfillment in "making improvements to communities, whether that be through public infrastructure, stream restoration, or water quality improvement projects."

Christine's clients appreciate her organization skills and the attention to detail she applies to hydrologic and hydraulic modeling, roadway drainage and storm water quality Best Management Practices.

Christine has more than 18 years of experience in the field of water resources. She specializes in hydrologic and hydraulic modeling related to stormwater management, floodplain management, erosion control management, and stream restoration. In addition, her expertise includes roadway drainage and Best Management Practices related to stormwater quality. She has experience evaluating existing systems and recommending improvements based on deficiencies as well as floodway related studies including FEMA flood maps. Christine is proficient in the use of the following hydrologic and hydraulic modeling software; HEC-HMS, HEC-1, TR-55, XPStorm, HEC-RAS, GeoHECRAS, FlowMaster, CulvertMaster, HY-8, and Autodesk Storm and Sanitary Analysis. She commonly uses ArcMap, ArcGIS Pro, and AutoCAD to support drainage analyses and has had experience using FishXing, PLRM, and USGS PeakFQ software.

## Representative Projects

### Mammoth Creek Gap Closure

*Town of Mammoth Lakes, CA*

Project Hydrologist. The Mammoth Creek Gap Closure Project was identified by the Town of Mammoth Lakes (Town) Bicycle Master Plan and Trails System Master Plan as a priority project needed to provide additional connectivity amongst the Town's already remarkable network consisting of nearly 17 miles of path. At build out, the project will connect two segments of the Town's trail system near the Minaret Road/Old Mammoth Road intersection. In support of project permitting, Christine reviewed existing hydrologic and hydraulic models and reports for the project reach of Mammoth Creek. She recreated a section of the HEC-2 model developed in support of the Mammoth Lakes Flood Insurance Study in HEC-RAS.

### Sierra Colina Village Development

*QMO LLC, Douglas County, NV*

Project Hydrologist. As the lead planning and civil design consultant, NCE provided land planning, regulatory compliance and civil design for the entitlement process and preliminary development of a residential subdivision on an 18-acre parcel located in the Lake Tahoe Basin. Our work included guiding the project through Tahoe Regional Planning Agency environmental review (Environmental Impact Statement), two-step subdivision, and planning commission approval. The project involved over 40 high end residential housing units, new residential roadway, right-of-way reduction, public utility easement abandonment, restriping of Highway 50, stormwater approach, drainage design, and permit compliance. NCE prepared full civil engineering design plans and obtained permits from Douglas County and the Nevada Division of Environmental Protection. Christine prepared the proposed



### Education

MS, Hydrology, University of Nevada, Reno, 2002  
BA, Environmental Studies, Bucknell University, 1998  
BA, Geology, Bucknell University, 1998

### Registrations and Certifications

Professional Engineer – Civil, NV #19881  
Professional Hydrologist #06-H-1684  
Certified Floodplain Manager  
ASFPM: US-18-10563

### Affiliations

American Institute of Hydrology  
Association of State Floodplain Managers, Inc.  
American Public Works Association

### Joined NCE

2009

### Total Years of Experience

19 years

conditions hydrologic model using HydroCAD and the Conceptual Drainage Study. She also provided planning support and coordination for the Planned Development Application to Douglas County.

### **Homewood Mountain Resort Redevelopment**

*JMA Ventures, Homewood, California*

Project Hydrologist. Homewood Mountain Resort is implementing a mountain wide redevelopment project that includes new base amenities (hotel, retail, residential, restaurant, gathering spaces), on mountain improvements (chairlifts, recreation facilities, mid-mountain lodge), roadways, parking facilities, trails, and utilities. NCE supported the project with engineering, planning and environmental services through the initial agency engagement and project entitlement process. NCE continues to support the phased implementation of the project with planning, engineering, permitting, and construction support services. Engineering design has included roadway and utility infrastructure, parking facilities, multi-unit lodge, underground parking, trails, drainage, erosion control, and creek restoration. Planning and permitting work have included guiding variances through development review and the planning commission and obtaining permits from Placer County, Lahontan Regional Water Quality Control Board, US Army Corps of Engineers, California Department of Fish & Wildlife, and the Tahoe Regional Planning Agency.

### **Edgewood Tahoe Resort Redevelopment**

*Edgewood Companies, Douglas County, NV*

Project Hydrologist. The Edgewood Tahoe Resort Project is one of the largest redevelopment projects to occur on the south shore of Lake Tahoe. The two-part project involved 1) a redevelopment component that included a new lodge with 154 rooms including a spa, restaurant, and pool terrace; 10 villas each with multiple units and associated patio amenities; an expanded clubhouse with event lawn; infrastructure and utility improvements; new roads and pedestrian facilities, and upgrades to the golf course including hole realignments, revamped tee boxes, and a new irrigation system and 2) an environmental improvement component termed "Threshold Projects" which included creek and wetland restoration, fish passage structures, aquatic habitat creation, pond dredging, and water quality improvements. NCE was responsible for planning, design, permitting, and construction support services for all aspects of the redevelopment project. For the redevelopment component, Christine performed hydrologic and hydraulic modeling using Autodesk's Storm and Sanitary Analysis to aid in the sizing and design of the storm drain and water quality improvement systems associated with the Lodge improvements. She was responsible for the hydrology, hydraulics and water quality modeling to support the design of stream and wetland restoration projects on the Edgewood Tahoe Golf Course. She identified flow rates and velocities to support the design of stream and wetland restoration projects. She determined peak flows from the 25-year event to support the design of drainage infrastructure and analyzed flow data from Edgewood Creek to identify average low flow conditions. She developed the existing conditions and proposed conditions Pollutant Load Reduction Model (PLRM) scenarios. The model scenarios were developed to demonstrate the anticipated water quality benefits associated with an improved wetland system that receives flow from a highly urbanized area. She also revised the model scenarios for the Lodge development portion of the project. Christine also developed a 1-D hydraulic model in HEC-RAS of the reach of Golf Course Creek from Lake Parkway to its confluence with Edgewood Creek. She created model scenarios of existing/current conditions and proposed conditions to demonstrate that the proposed restoration of Golf Course Creek will not have an adverse impact on the floodplain elevation of Golf Course Creek. The results of the modeling effort will inform a CLOMR application to Douglas County and FEMA.

### **Drainage Master Plan**

*City of Bishop, CA*

Project Hydrologist. The City of Bishop made the decision to prioritize stormwater and drainage planning within their jurisdiction but faced an enormous challenge as the City had no established drainage standards, no information on the existing capacity of storm drain system, limited GIS data and lacked any formal grading or stormwater program. As a result the City commissioned the development of a Drainage Master Plan to include documentation of drainage and stormwater regulations pertinent to the City, reasonable City specific drainage design standards, a complete and accurate storm drain geodatabase, a full capacity analysis of the existing system and capital improvement project (CIP) recommendations. Christine developed a set of drainage criteria for the City and then developed an XPStorm model of the City's drainage network. The hydrologic and hydraulic modeling provided a capacity analysis of the existing system that was used to inform capital improvement project recommendations.

### **Virginia Street Mid-Town & Regional Transportation Commission RAPID Expansion Project**

*Regional Transportation Commission of Washoe County, Reno, NV*

Project Hydrologist. NCE prepared the environmental document, preliminary and final engineering design of the Virginia Street Bus RAPID Transit Extension project that increases mobility and safety along the corridor. The project includes the extension of RTC RAPID service from the 4<sup>th</sup> Street Station to the University of Nevada Reno (UNR) with new transit stations, roadway reconstruction, intersection and signal modifications, landscaping and aesthetics, pedestrian improvements and lighting, bicycle improvements, parking and access management, utility relocations, and drainage improvements. The \$60 million project area covers Virginia Street from Plumb Lane to Liberty Street and from Maple Street to north of the Lawlor Events Center, as well as portions of Center Street, East and West Arroyo Street, Caliente Street, Martin Street, La Rue Avenue, Cheney Street, Saint Lawrence Avenue, Tahoe Street, Moran Street and Stewart Street. Christine has performed hydrologic calculations to determine peak flows from the minor and major events, has developed an Autodesk Storm and Sanitary Analysis model to support the replacement of the Cochran Ditch box culvert through the Project site, has prepared the Drainage Report, and has prepared drainage related items in support of a Nevada Department of Transportation Encroachment Permit application.

### **Fish Passage – Design/Build**

*United States Forest Service, South Lake Tahoe, CA*

Project Hydrologist. As part of a design/build team, NCE provided design and construction engineering services for replacement of a stream crossing located on Saxon Creek Road, approximately a half mile from its intersection with Fountain Place Road off Pioneer Trail in the City of South Lake Tahoe, CA. The design included replacement of the low water crossing and culvert to allow for Aquatic Organism Passage (AOP) of both adult and juvenile salmonids. The pipe and channel bed in the pipe were designed as to simulate the stream channel above and below the crossing. Christine performed a hydraulic analysis to demonstrate the design would pass the required flows, as well as accommodate AOP for adult and juvenile salmonids. The AOP analysis considered both depth and velocity to meet requirements. The modeling was performed using both 1D HEC-RAS and Fish Xing software for both fish passage and stream flow requirements.

### **Spanish Springs Mine**

*Teichert Materials, NV*

Project Hydrologist. NCE provided support to Teichert Materials by conducting hydrological modeling and analysis and preparing a stormwater pollution prevention plan for the recently acquired Spanish Springs Mine located in Spanish Springs, NV. Christine developed a HEC-HMS model of the offsite watersheds that contribute flows to the mine site per methodologies outlined in the Truckee Meadows Regional Drainage Manual and aided in the generation of a simplified two-dimensional (2-D) hydraulic model utilizing the latest version of the US Army Corp of Engineers HEC-RAS program. The 2-D model was based on topographic data provided for the site with the goal of determining the general discharge locations and estimated volumes of ponding on the site.



## Dick Minto

### Senior Construction Manager

Prior to joining NCE in 2012, Dick managed road maintenance and construction activities for the Washoe County Public Works Department. He was responsible for implementing cost effective approaches for construction and maintenance activities. Those duties also included road reconstruction, surface treatments, erosion control project, repairing and maintaining drainage systems etc. He has performed construction oversight, management and resident inspection services for over 30 years. Dick is extremely familiar with cost effective approaches for construction and the long-term maintenance implications of various design options. He has extensive experience with the Manual on Uniform Traffic Control Devices (MUTCD) and the Standard Specifications for Public Works Construction.

### Representative Projects

#### Civil Engineering RMRA Mitigation Fund Road Repair Projects

*County of Tuolumne, CA*

Senior Construction Manager. NCE provided civil engineering services to augment the County's staff for various pavement surface treatment / rehabilitation / reconstruction projects within the County. NCE was tasked to perform all services necessary to design specific engineered pavement repair solutions for selected segments of roadway, based on geotechnical and pavement engineering analyses and testing. Scope of work included sampling and testing tasks, such as soils R-value sampling and testing and pavement coring, and design tasks, culminating in the deliverables of plans, specifications, and estimates for the best feasible pavement repairs or repair strategies, as outlined or recommended by the engineering report(s) for said roads. Multiple repair strategies were prescribed for each road, based on varying location-specific existing pavement and soil condition testing results, and needs. The engineering services included bid documents for the recommended road repairs, a package of plans, special provisions, technical specifications, and engineer's estimate for each of the roads.

#### Virginia Street Bus RAPID Transit Extension

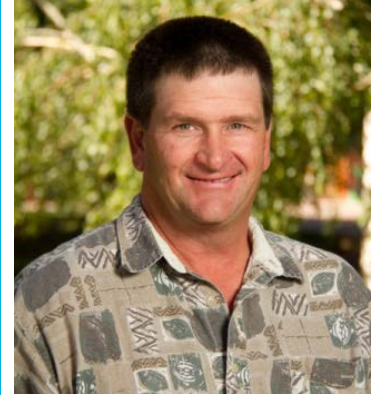
*Regional Transportation Commission of Washoe County, NV*

Constructability and Maintainability Reviews. NCE prepared the environmental document, preliminary and final engineering design of the Virginia Street Bus RAPID Transit Extension project that increases mobility and safety along the corridor. The project includes the extension of RTC RAPID service from the 4<sup>th</sup> Street Station to the University of Nevada Reno (UNR) with new transit stations, roadway reconstruction, intersection and signal modifications, landscaping and aesthetics, pedestrian improvements and lighting, bicycle improvements, parking and access management, utility relocations, and drainage improvements. The \$60 million project area covers Virginia Street from Plumb Lane to Liberty Street and from Maple Street to north of the Lawlor Events Center, as well as portions of Center Street, East and West Arroyo Street, Caliente Street, Martin Street, La Rue Avenue, Cheney Street, Saint Lawrence Avenue, Tahoe Street, Moran Street and Stewart Street.

#### East Newlands Road and Nevada Pacific Parkway Crack Repair Project

*City of Fernley, NV*

Resident Inspector. The East Newlands Road and Nevada Pacific Parkway Crack Repair Project consisted of repairing transverse and longitudinal cracks in an Industrial area that supports high volumes of truck traffic. The cracks ranged in width from 3" to 12" and continue to grow as a result of the asphalt roadway shrinking.



#### Education

Shasta College

#### Joined NCE

2012

#### Total Years of Experience

35 years

NCE has worked with several jurisdictions over the past several years to provide agencies with maintenance techniques that are cost effective to maintain shrinking asphalt roadways and parking lots. Dick served as the resident inspector for the 10,300 linear feet repair project. His duties included tracking work quantities and assurance that work was completed per plans and specifications. He maintained a field set of record drawings. He also monitored the project and recorded asphalt shrinkage resulting in crack growth on a monthly basis for one year after completion of the project.

#### **City of Berkeley, Measure M Street Rehabilitation Program**

*Berkeley, CA*

Construction Manager/Inspector. Dick provided constructability review for this project. With a program cost of over \$30 million, it included more than 30 miles (150 street sections) of surface seal, street rehabilitation, and reconstruction. Complete street elements included new bike lanes, intersection reconfigurations, new pedestrian crosswalks, storm drain improvements, and design of nearly 600 curb ramps, including pedestrian safety improvement bulbouts.

#### **Lakeshore Drive Pavement Rehabilitation and Drainage Improvements**

*Washoe County Public Works Department, NV*

Resident Inspector/Project Maintenance Manager. Dick's responsibilities included advising the design team on existing conditions and design alternatives to achieve a completed project that would be efficient and cost effective to maintain. The project included underground drainage, storm treatment vaults and improvements to bicycle and pedestrian traffic. Dick reviewed proposed construction plans and schedules and worked with project managers, construction supervisors, field personnel and engineers in their performance of field inspections to ensure a high-quality cost-effective project.

#### **Gonowabie Road Slope Repair**

*Washoe County Community Services Department, NV*

Construction Manager and Inspector. The project included inspection services for the construction of a soil nail wall on Gonowabie Road in Crystal Bay. Tasks included documenting daily construction progress, and meeting with project managers, engineers, county inspectors and job superintendents for planning and construction questions. He conducted traffic control inspections, ensured daily construction procedures were consistent with plans and ensured Best Management Practices (BMPs) were in place.

#### **Comstock Drive Drainage and Roadway Improvements**

*City of Fernley, NV*

Construction Manager. Dick provided constructability and maintainability input to the design team and part-time construction inspection. He worked with the design team to make sure the project was constructible and maintainable in an efficient and cost-effective manner.

#### **Road Operations Effectiveness Testing**

*City of South Lake Tahoe, CA*

Maintenance Management Consulting Services. Dick provided oversight for Road RAM, winter road operations (sanding and sweeping) cost effectiveness study of jurisdictions in the Tahoe Basin. Duties included advising regulatory agencies and road maintenance managers on alternatives to reduce sediment loading in Lake Tahoe.

#### **Washoe County Inspection and Engineering Support Services**

*Washoe County, NV*

Construction Manager/Inspector. Under an on-call contract with Washoe County Community Services Department, NCE is providing miscellaneous engineering office support, including review of plans, details and specifications, attending preconstruction meetings, Orange Book meetings, and other miscellaneous office support requested by the County, such as providing miscellaneous on-call field inspection services for subdivision construction projects, street rehabilitation projects, surface treatment projects, curb and gutter replacement projects, plan and specification oversight and review and inspections for the street cut permitting program.



**Nevada Department of Transportation Maintenance Achievement Program,  
Statewide, NV**

Construction Manager/Inspector. The Nevada Department of Transportation (NDOT) required roadway asset field data collection to objectively measure the level of service delivered through highway maintenance activities. Analysis of the condition assessment results facilitates NDOT's ability to budget, plan, and manage highway maintenance more effectively and efficiently. The project includes the annual assessment of the performance of 1000 roadway sample units, distributed over all interstates, US highways, and state highways in Nevada. Each survey measures a total of 58 maintenance elements and their associated activities, representing all NDOT-owned infrastructure within the right-of-way other than pavement. Additionally, surveys were conducted on highway lighting, snow and ice removal, and rest area maintenance levels of service. NCE has been responsible for planning and conducting data collection team training, performing condition assessments, providing quality assurance/quality control of the surveys, and developing the ESRI geodatabase.

**Venice Drive Water Line Replacement  
Tahoe Keys Property Owners Association, CA**

Resident Inspector. Dick's responsibilities included on-site construction inspection for a water main replacement project for the Tahoe Keys Property Owners Association. He provided bid assistance including the project pre-bid meeting, preparing responses to Contractor RFIs and addendum during the bid phase as well as evaluation of construction bids.

**Crystal Bay Water Quality Improvement Project Phase I and II  
Washoe County Community Services Department, NV**

Project Maintenance / Construction Manager. The project included design and construction of a comprehensive erosion control and water quality improvement project that included water quality improvements utilizing best management (BMPs) within the County Right-of-Way to enhance water quality within the watershed. Project design conformed to the Tahoe Regional Planning Agency (TRPA) Environmental Improvement Program for water quality retrofit. Specific project responsibilities included advising the design team on existing conditions and design alternatives to achieve a completed project that would be efficient and cost effective to construct and maintain.

**Johnson Lane Rehabilitation Constructability and Maintainability Reviewer  
Douglas County, NV**

Johnson Lane, from Heybourne Road to Vicky Lane, experiences frequent flooding. The road and adjacent areas are impacted, especially at the intersections of Johnson Lane with Heybourne Road, Nowlin Road, Business Parkway and Wildhorse Drive. The drainage facilities within and crossing the road right-of-way, include cross and side street culverts, roadside ditches and swales, and valley gutters. These features experience overtopping, erosion, and sediment deposition through the project area during frequent rainfall events. The goal of this project is to design improvements to address the frequent flooding and convey flows up to the peak 25-year, 24-hour event without roadway inundation or negative impacts to adjacent properties. Dick is providing constructability and maintainability input to the design team.

**RTC Reno Consolidated 20-01, Constructability and Maintainability Reviewer  
Regional Transportation Commission of Washoe County, NV.**

Senior Construction Manager. NCE is providing engineering services for the Reno Consolidated 20-01 Project including portions of Mayberry Drive, California Avenue, and First Street in Reno. The intersection of Mayberry Drive and California Avenue will be reconfigured and reconstructed to improve safety. Anticipated improvements include new sidewalk, sidewalk replacement, bicycle lanes, pedestrian ramps, utility adjustments, grading, and drainage improvements. Dick is providing constructability and maintainability input to the design team.