

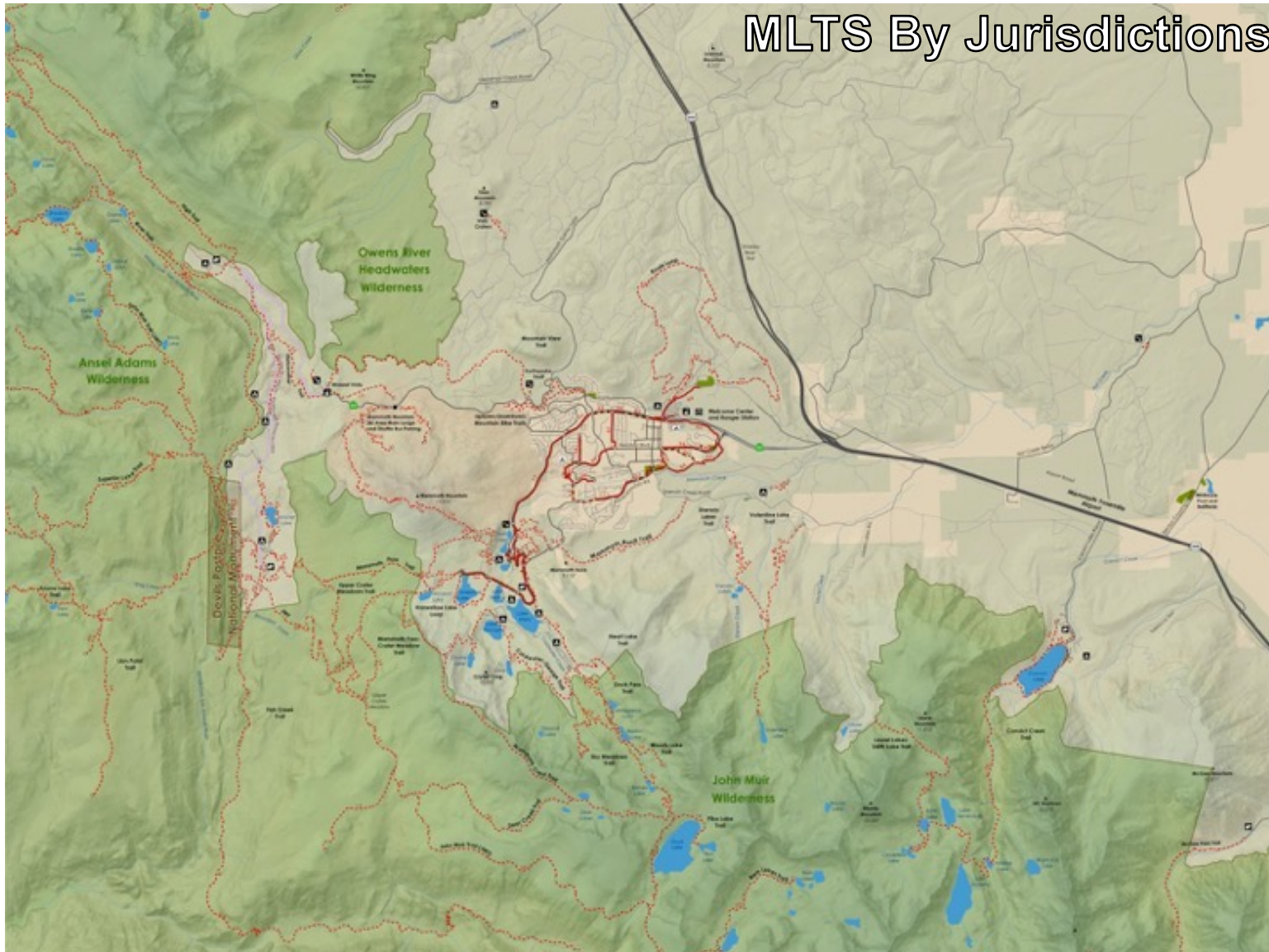


**Sherwins Area Recreation Plan  
History / Background  
Mammoth Trails Committee  
April 14, 2022**

December 7, 2005 - The Ranch Road Gate



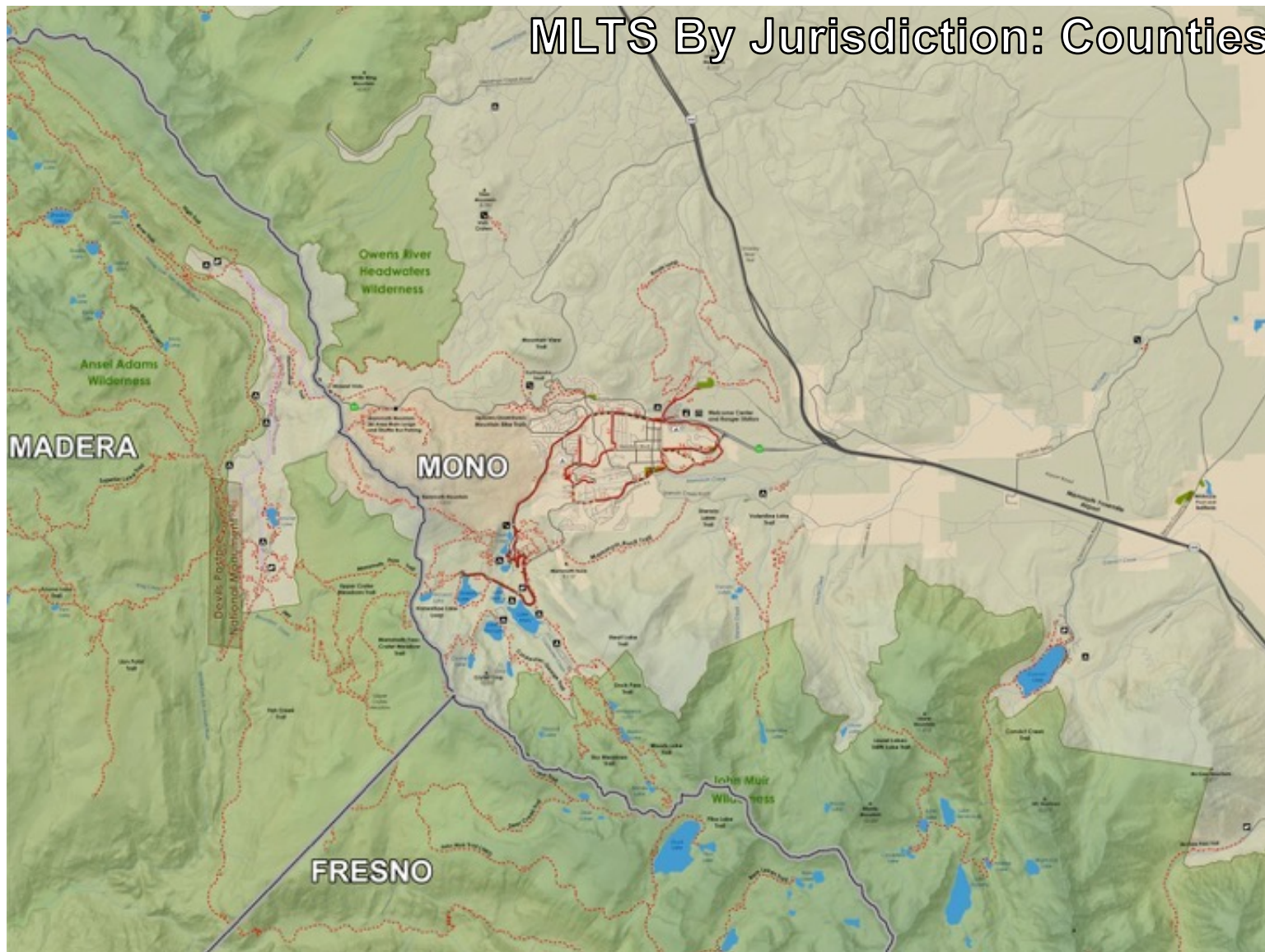
# MLTS By Jurisdictions





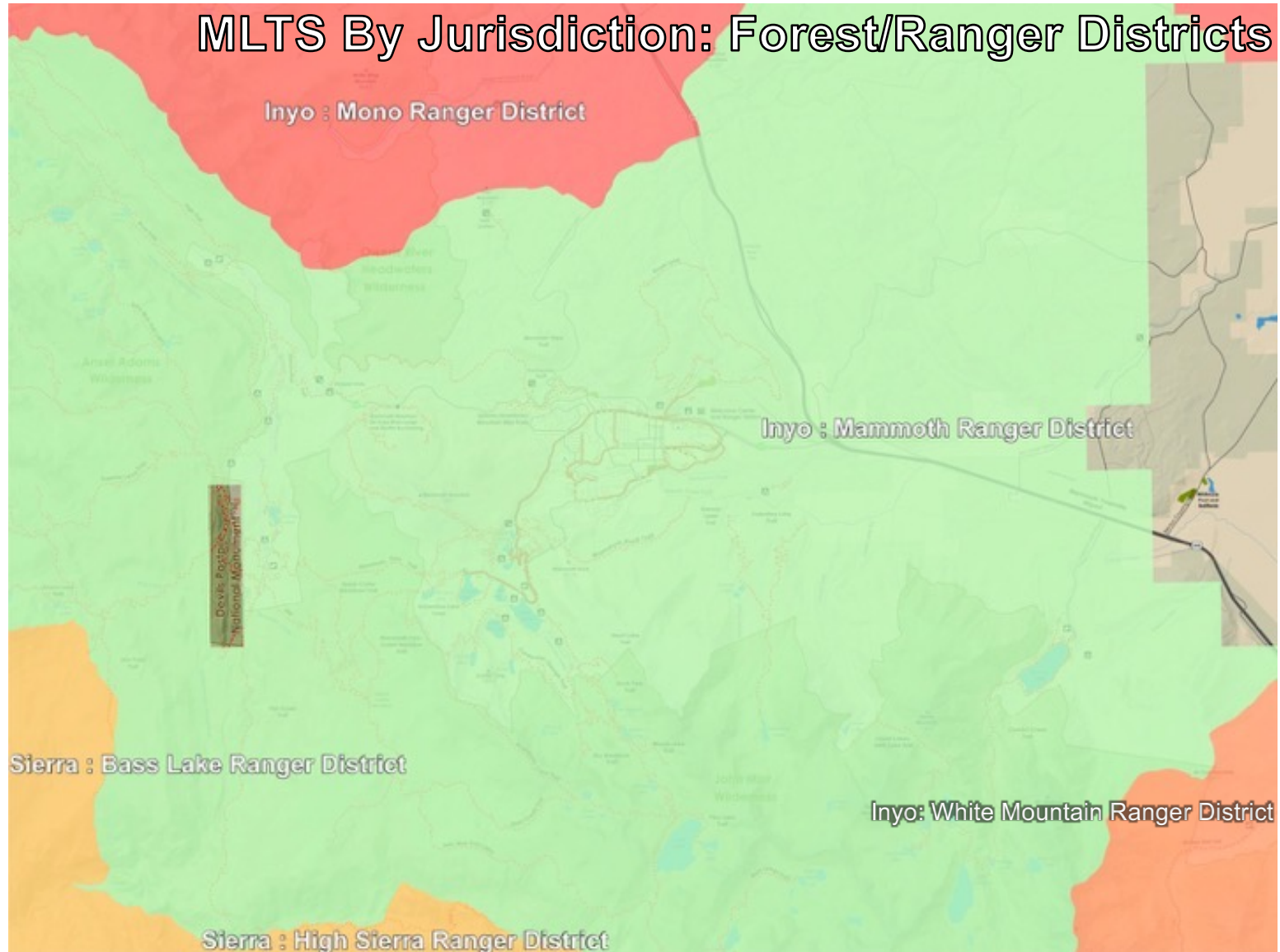


# MLTS By Jurisdiction: Counties

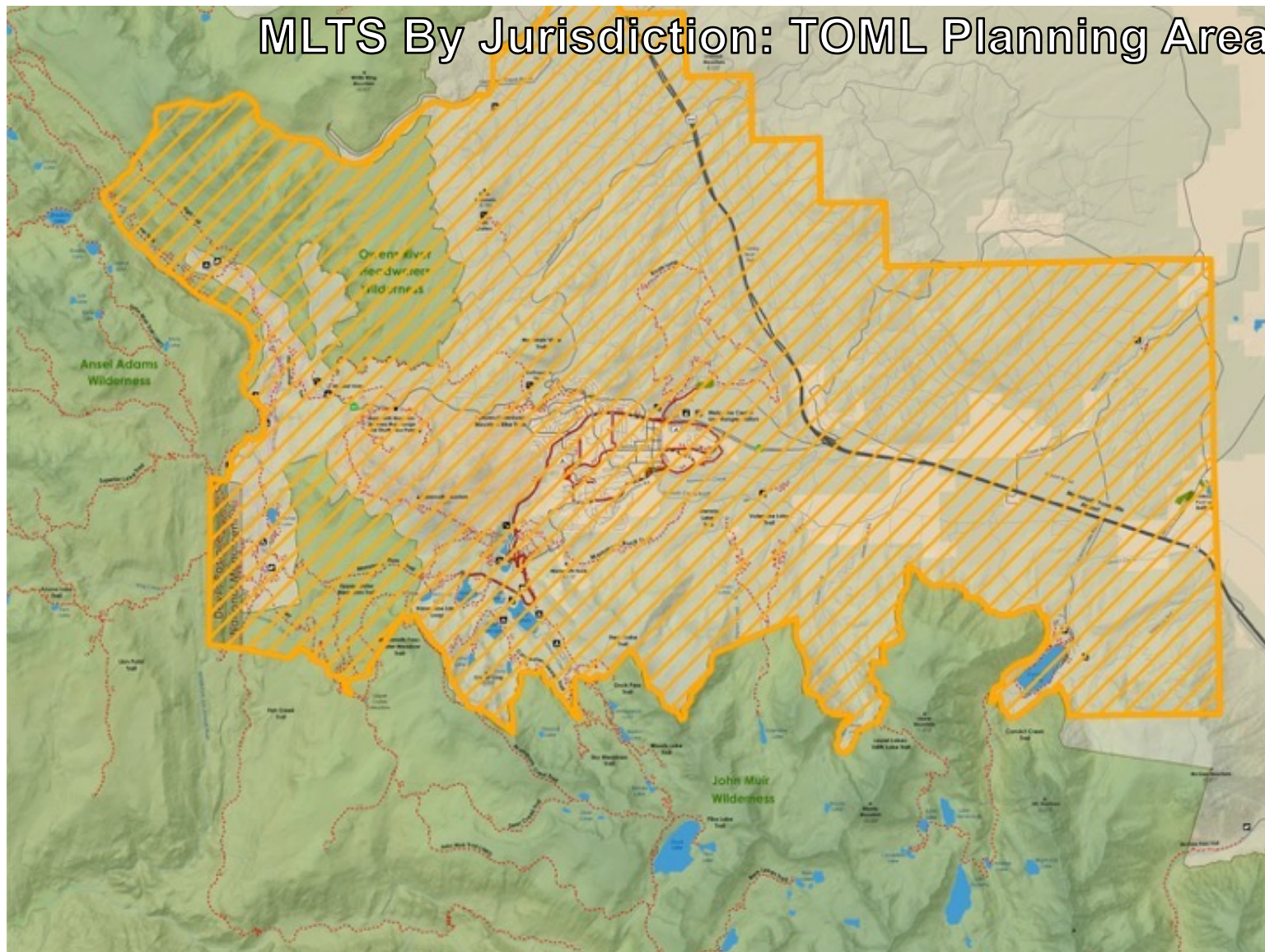




# MLTS By Jurisdiction: Forest/Ranger Districts



## MLTS By Jurisdiction: TOML Planning Area



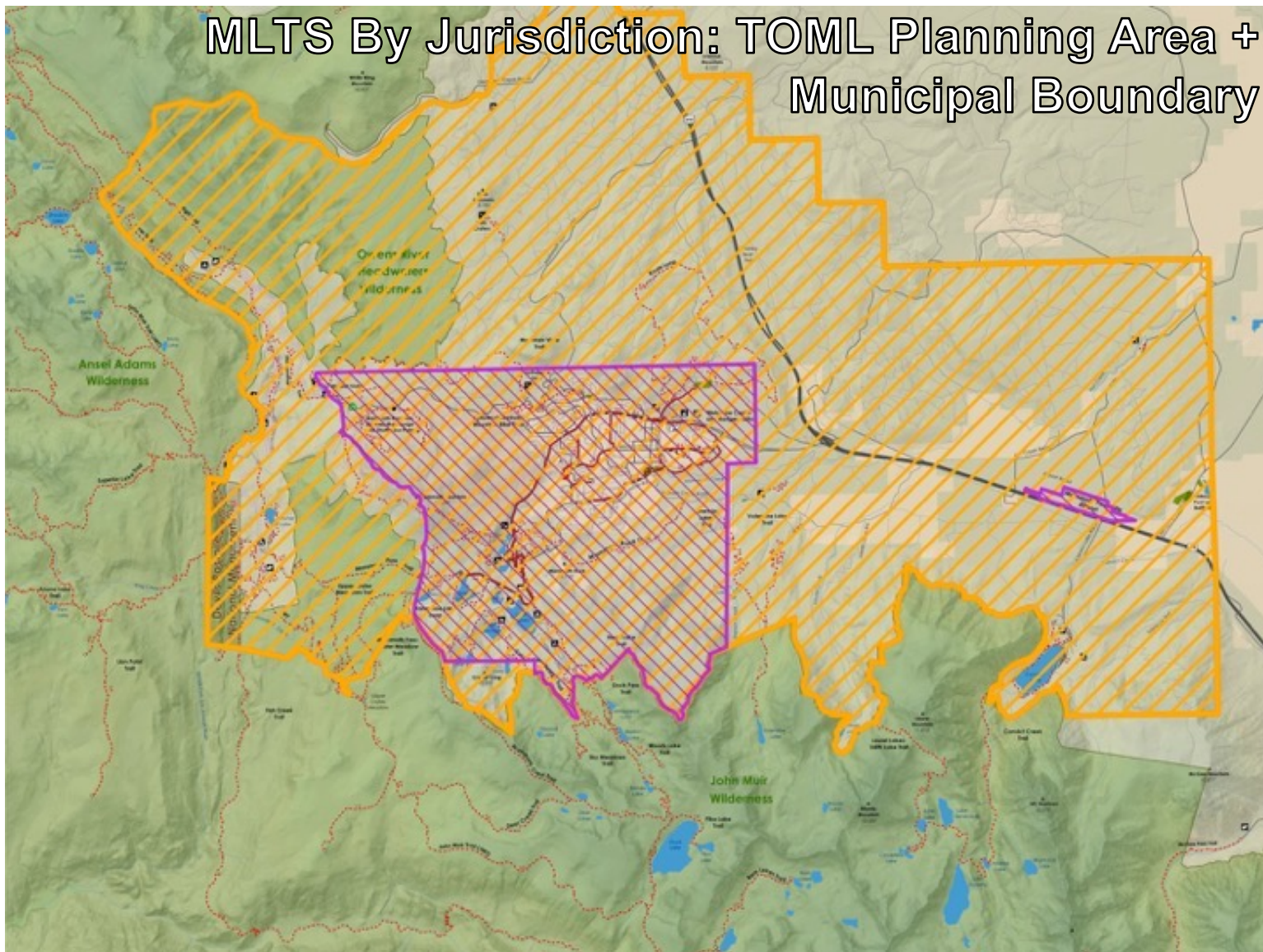


## Town of Mammoth Lakes - Planning Area Southern Boundary



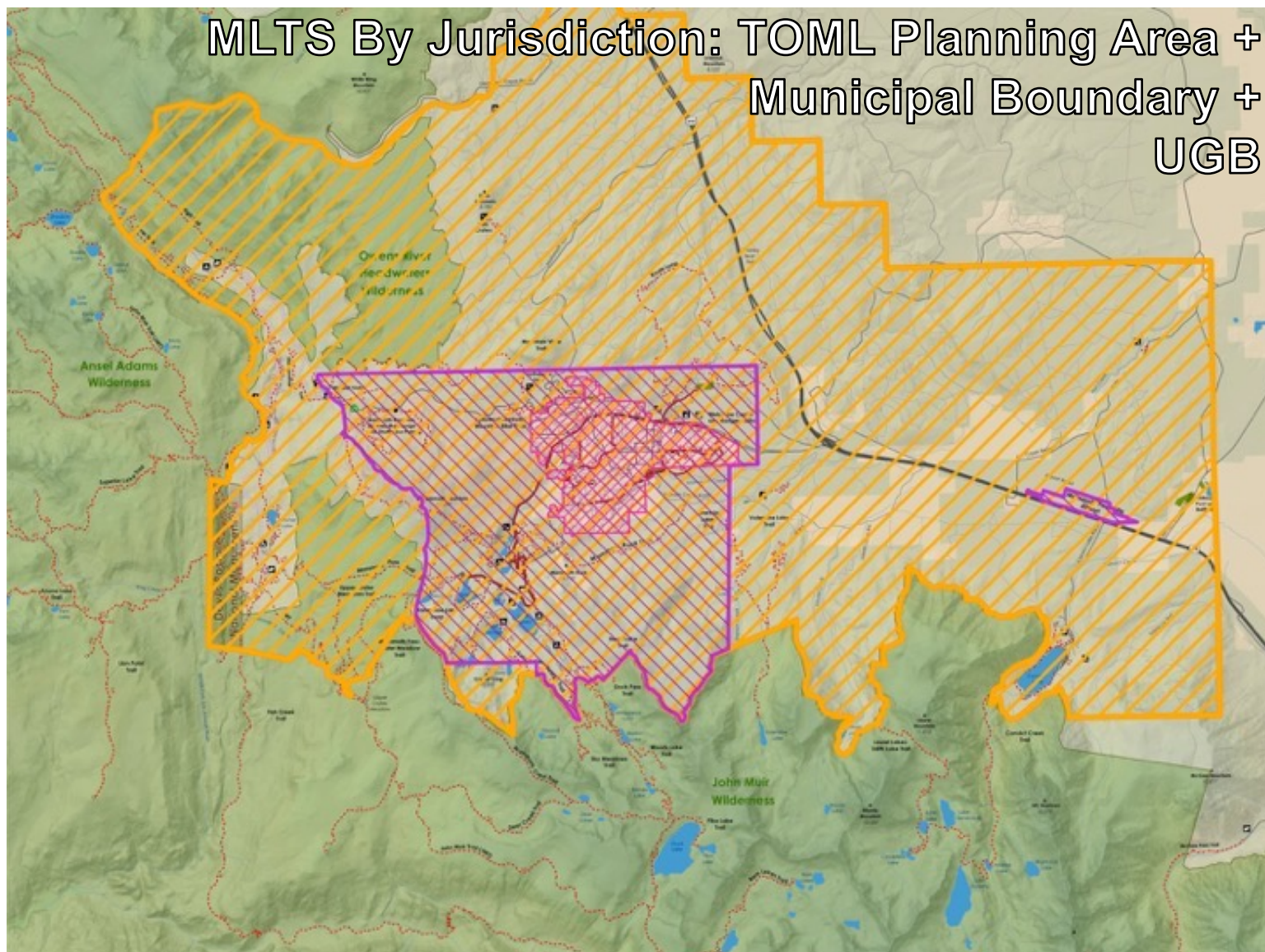


# MLTS By Jurisdiction: TOML Planning Area + Municipal Boundary





# MLTS By Jurisdiction: TOML Planning Area + Municipal Boundary + UGB

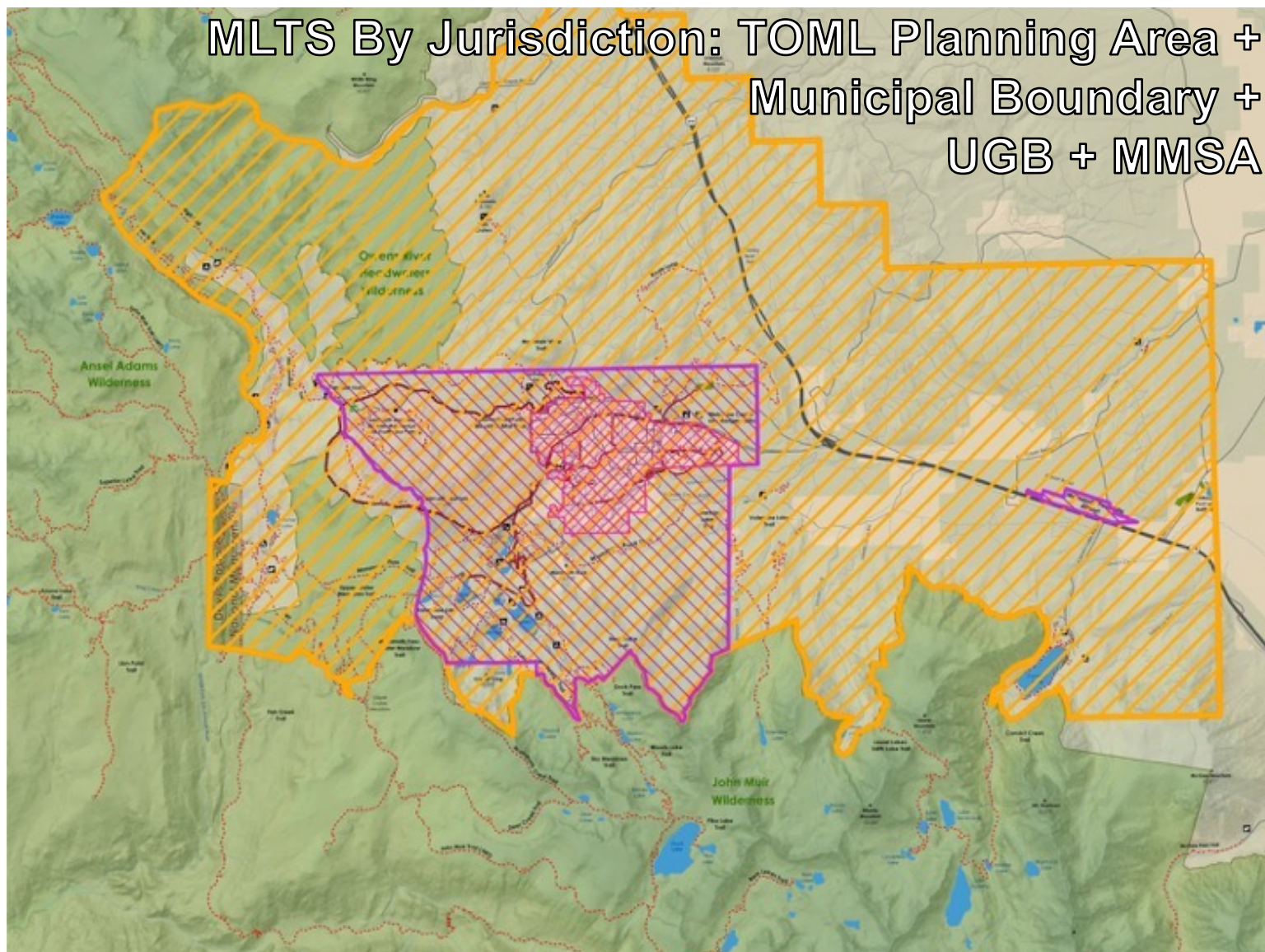




## Town of Mammoth Lakes Municipal Boundary

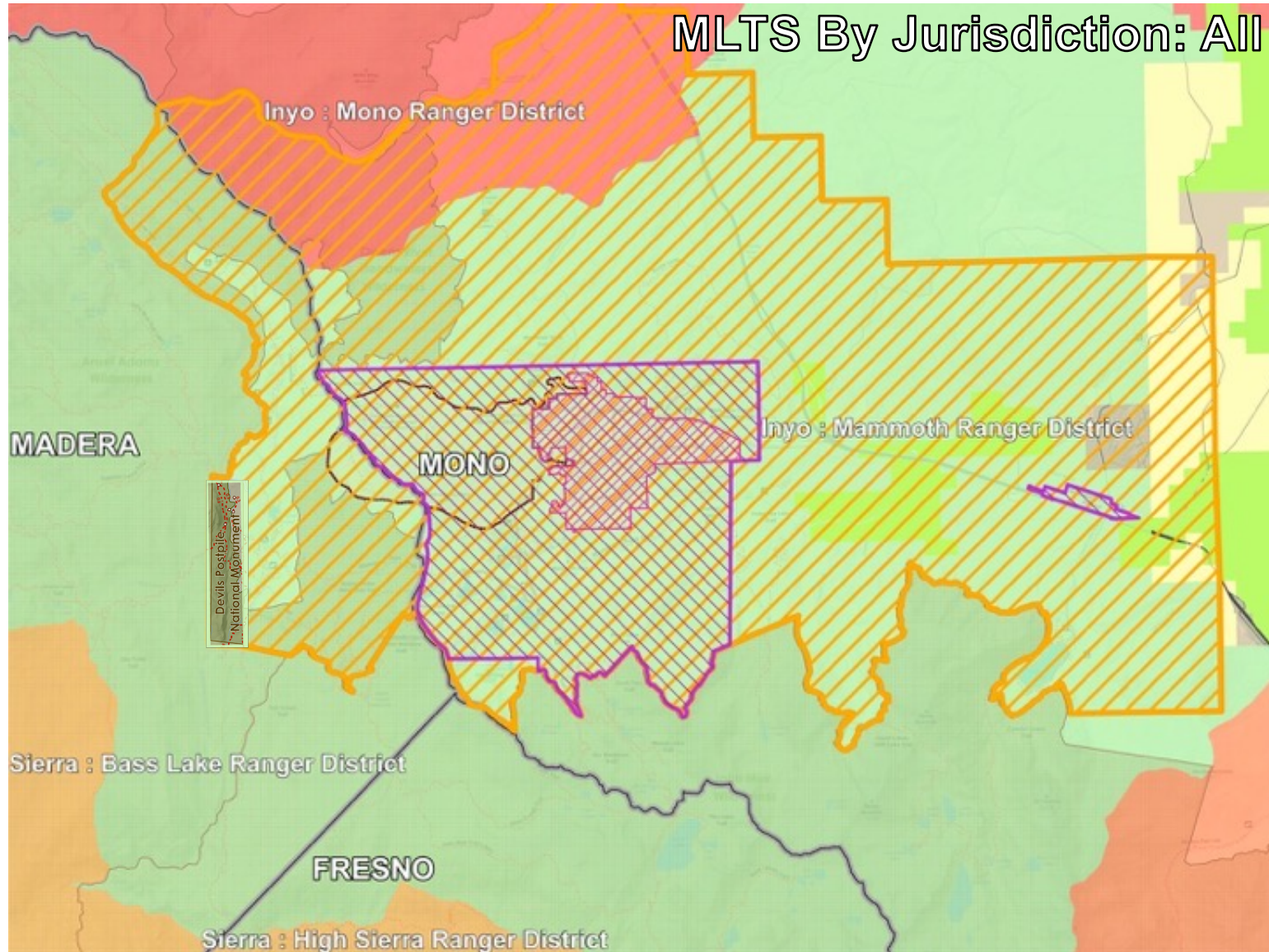


# MLTS By Jurisdiction: TOML Planning Area + Municipal Boundary + UGB + MMSA

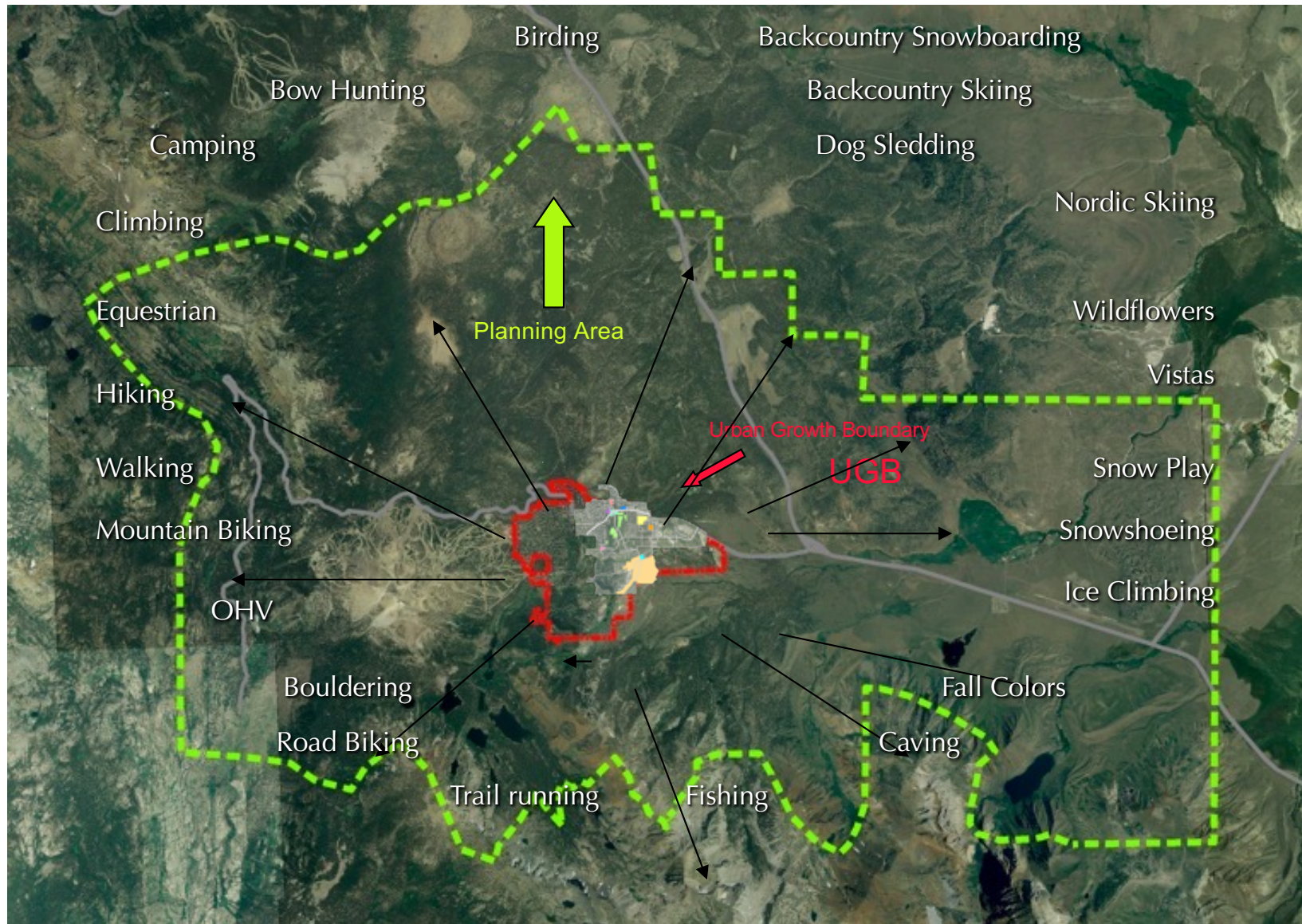




## MLTS By Jurisdiction: All





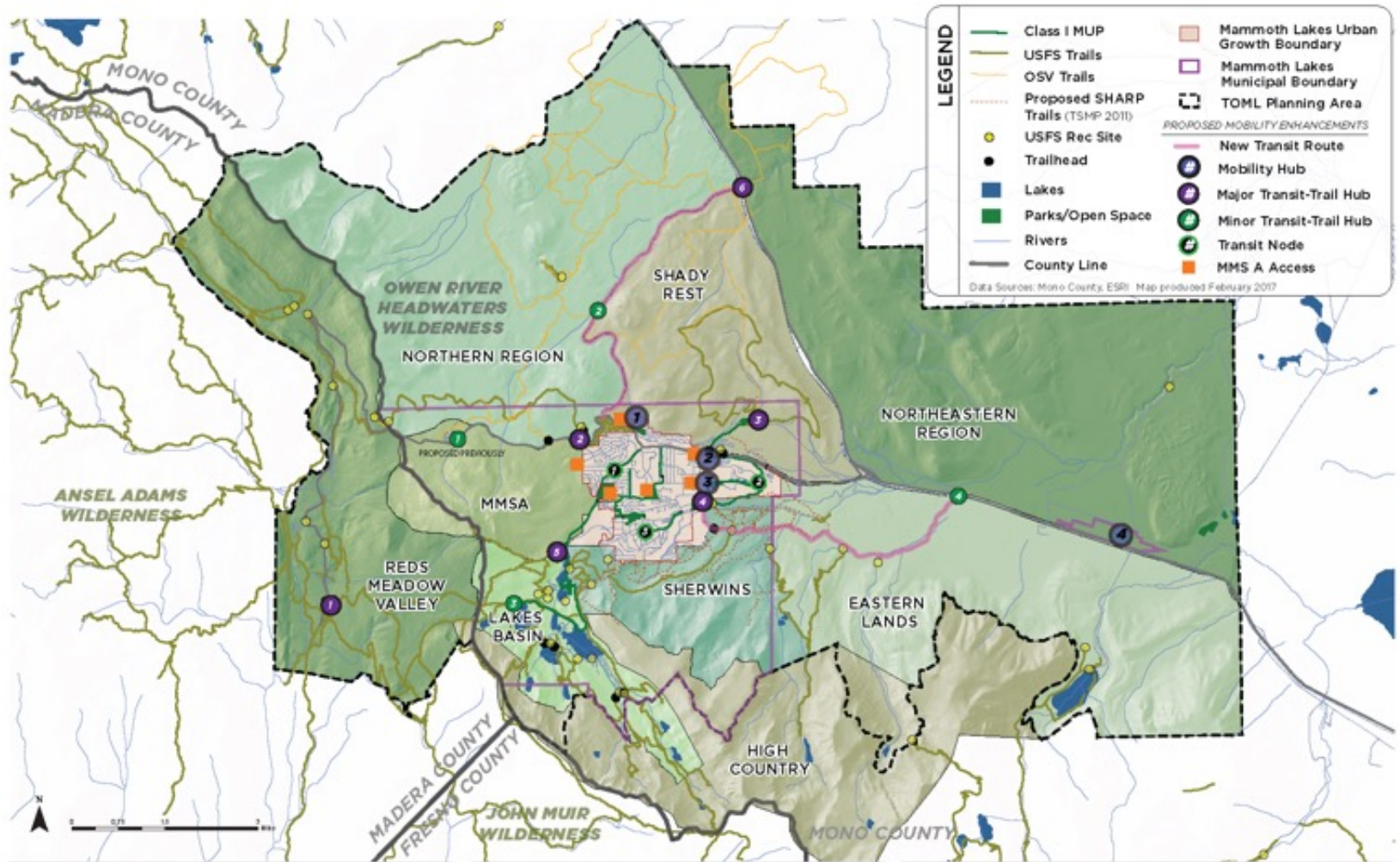






## WALK, BIKE, RIDE MAMMOTH

PROPOSED REGIONAL  
MOBILITY



### AMENITIES LEGEND

- PARKING
- TRANSIT STOP
- BIKE SHARE
- CAR SHARE
- CHARGING STATION
- INFORMATION
- HOUSING
- RETAIL
- GONDOLA ACCESS

#### Mobility Hub

- VILLAGE MOBILITY HUB
- TOWN CENTER MOBILITY HUB
- TOWN SQUARE

#### Major Transit-Trail Hub

- REDS MEADOW HUB
- MOUNTAINVIEW TRAIL HUB
- SHADY REST HUB
- MAMMOTH CREEK PARK HUB

#### Minor Transit-Trail Hub

- MAMMOTH MOUNTAIN INN HUB
- INYO CRATER HUB
- HORSESHOE

#### Transit Nodes

- 
- 
-





# WALK, BIKE, RIDE MAMMOTH

## PROPOSED MOBILITY

LEGEND

TOWN LOOP

Existing

 Planned

HIKE/BIKE LOOP

Existing

 Planned

.....

 Sherwin Area Recreation Plan Trails (SHARP) TSMP 2011

—

 Lift/Gondola Route

—

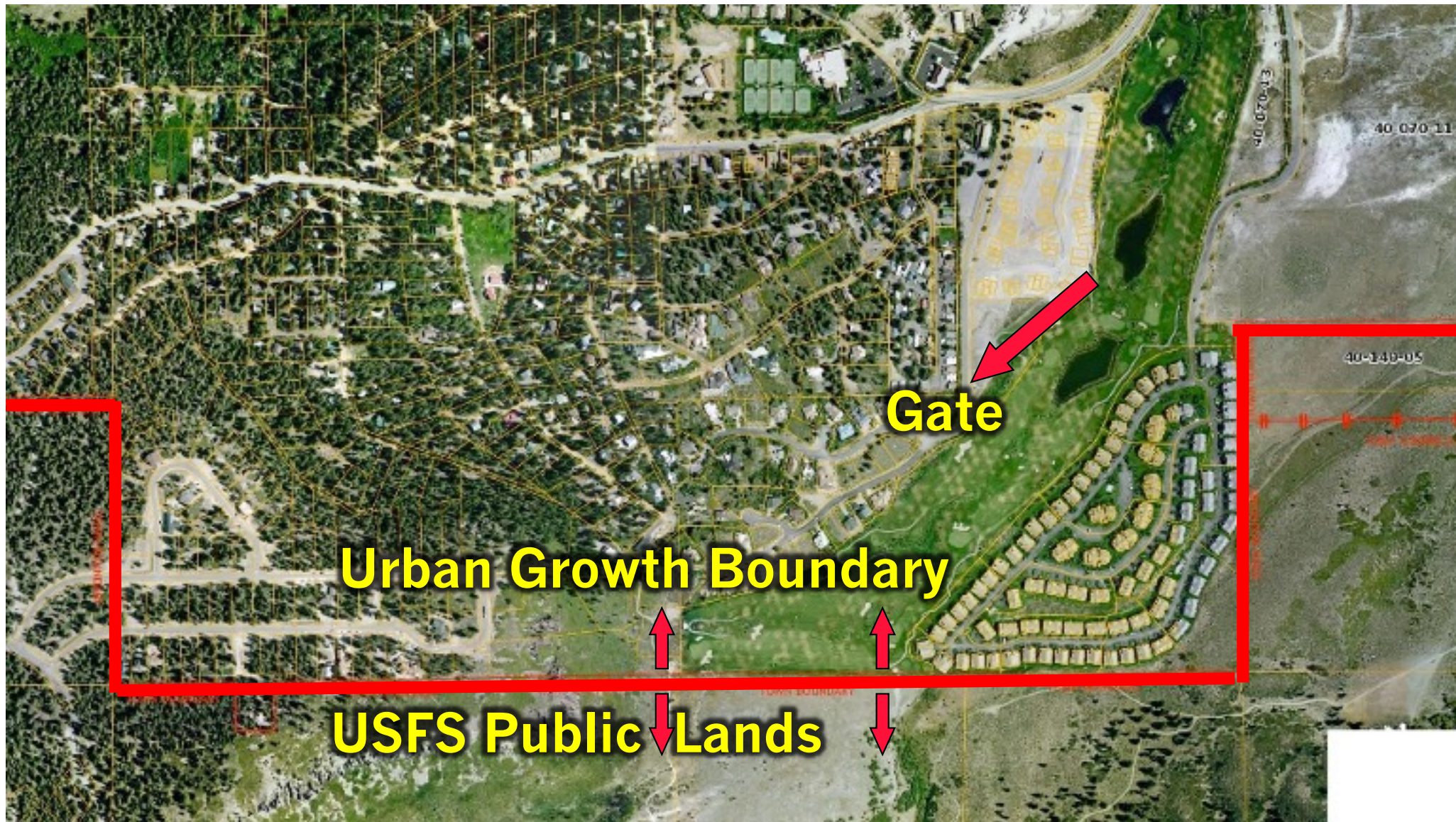
 Transit Connection Pedestrian Priority Area (Mammoth Lakes Pedestrian Plan, 2014) Fire Access Point Existing Gondola Station Proposed Gondola Station Mobility Hubs



December 7, 2005 - The Ranch Road Gate







**Gate**

**Urban Growth Boundary**

**USFS Public Lands**





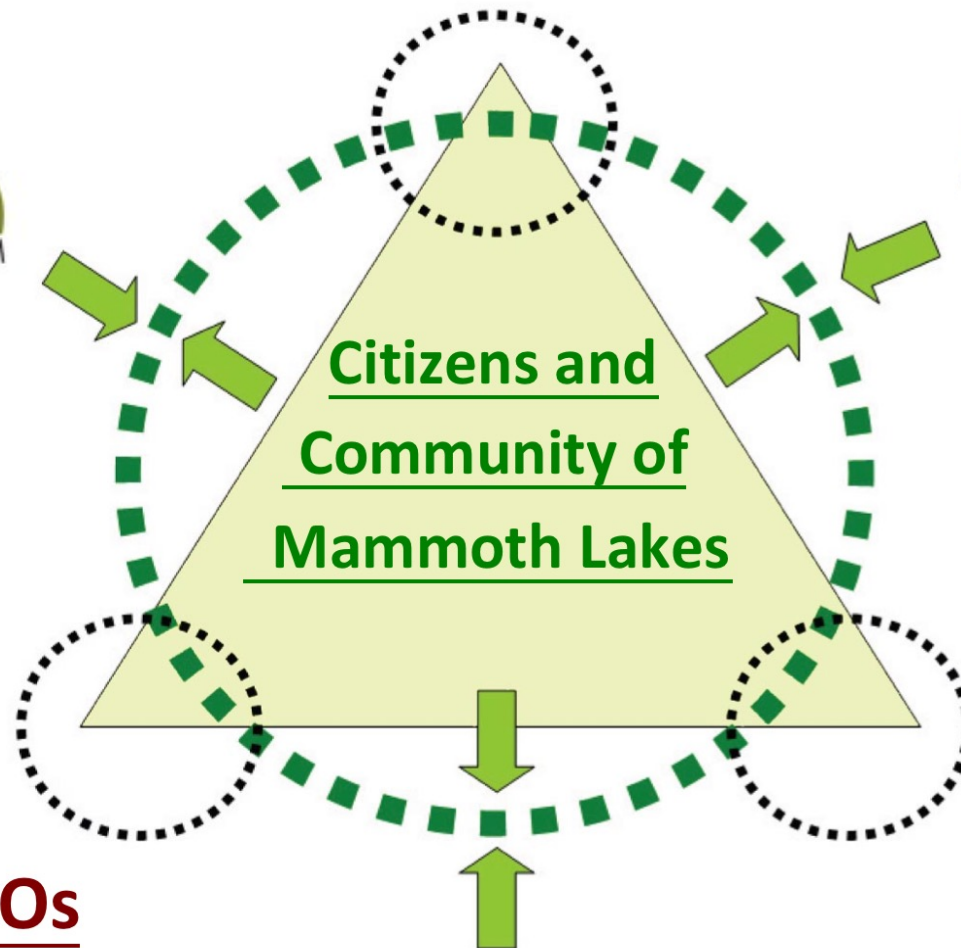


**“The coordination and representation of multiple jurisdictions, partners, and infrastructures as a single coherent trails system.”**

- Supported by multiple agencies and the community
  - Will support the “Triple Bottom Line”
- Will enhance the Recreation Product which in turn must compete:
  - Nationally, internationally and globally
  - In a technologically sophisticated world
- As a visitation enhancing economic development tool
  - With Mammoth Lakes’ Peer Resorts



## Public Agencies



Non-Profits/NGOs

Private Sector



## Town of Mammoth Lakes Trail System Master Plan

Adopted: October 19, 2011





## Town of Mammoth Lakes Trail System Master Plan

Adopted: October 19, 2011





## Town of Mammoth Lakes Trail System Master Plan

Adopted: October 19, 2011

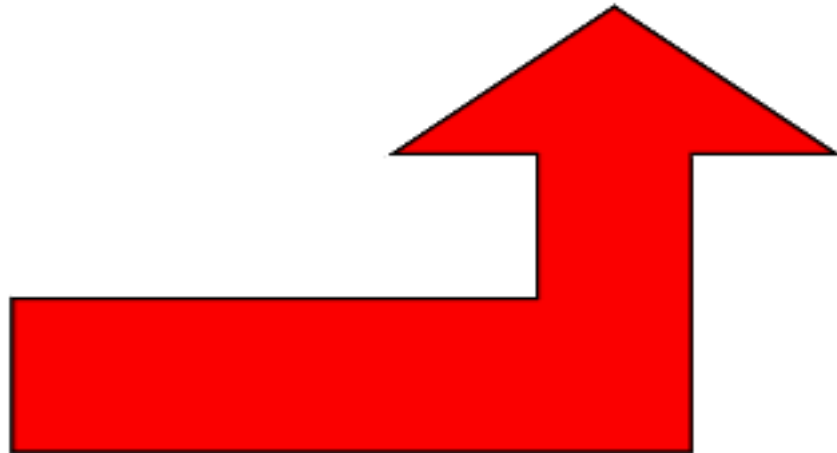






## Town of Mammoth Lakes Trail System Master Plan

Adopted: October 19, 2011



**2006/2012**

**\$20,442,620**

**New Trail System Master Plan**

- **Drafted and Adopted**
- **Significant Implementation through MLTPA Measure R Contracts**

**New Funding Sources w/o Sunset**

- **Measure R + Measure U**

**Partnered Efforts**

- **21 Different Partners including Volunteers**
- **71 Different Partnered Efforts**



## October 2012 - Mammoth Lakes Trail System Grand Opening





## **Impetus for Taking Action:**

- Long-standing conflicts between various parties concerning “appropriate” use of The Sherwins;
- Pending development proposals before Town Council;
- Desire to “test” collaborative effort to determine applicability to other potential efforts; and
- Previously completed studies indicating desire for increased recreation opportunities in area.



## Stakeholder Driven Collaborative Process



# The Sherwins Area Recreation Plan

Recommendations and Proposals  
for the Inyo National Forest



*as developed by*

## The Sherwins Working Group

November 3, 2009



*November 3, 2009: Members of the Sherwins Working Group celebrate with process facilitator Austin McNerny, members of the Inyo National Forest and Town of Mammoth Lakes technical support team, and MLTPA staff at the conclusion of their eighth and final meeting.*

**PROCESS FACILITATION:** Austin McNerny of the Center for Collaborative Policy at California State University in Sacramento, Calif., served as the process facilitator.

**PROCESS CONVENING:** Mammoth Lakes Trails and Public Access Foundation (MLTPA) staff served as the process conveners.

**TECHNICAL SUPPORT:** The Inyo National Forest and the Town of Mammoth Lakes provided technical support for the Sherwins Working Group.

**PROCESS FUNDING:** Process facilitation provided via existing agreements between the United States Forest Service and the U.S. Institute for Environmental Conflict Resolution. Process convening was funded by Sierra Nevada Conservancy grant funding to the Town of Mammoth Lakes, Sierra Nevada Conservancy grant funding to MLTPA, and Measure R.



**SPECIAL THANKS:** The Sherwins Working Group and their partners wish to gratefully acknowledge Sierra Meadows Ranch, the Mammoth Lakes Library, and The Westin Monache Resort for providing meeting space.



## Outcomes

- Adopted by TOML w/ Trail System Master Plan (2011)
- Programmatic Environmental Approval (CEQA)
- Broad Support for both Summer & Winter Proposals

## The Sherwins Area Recreation Plan

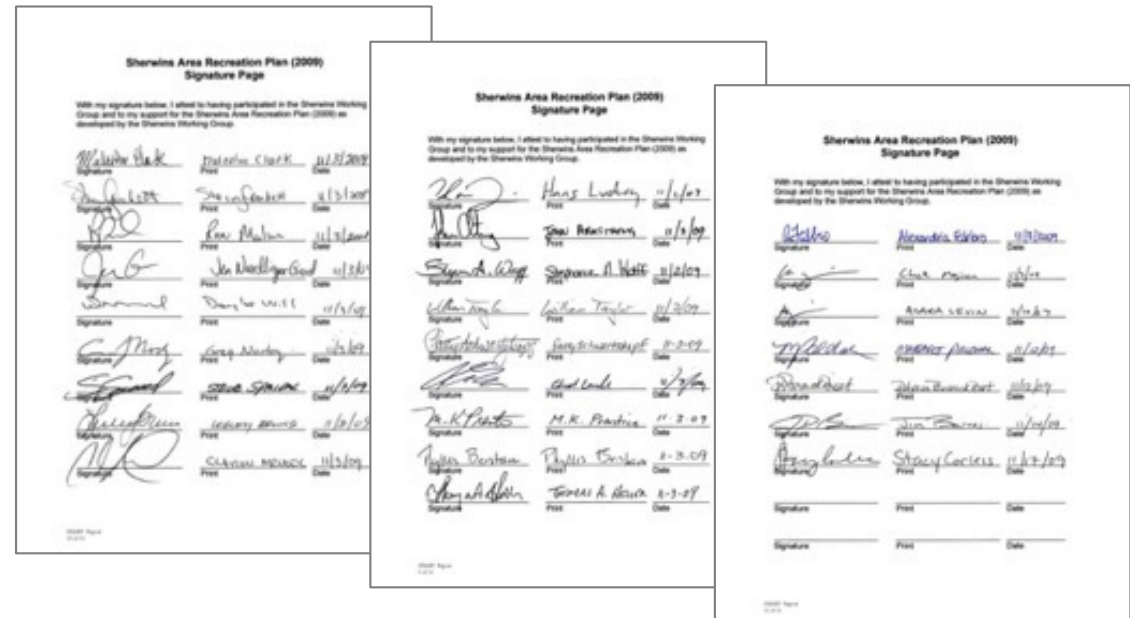
Recommendations and Proposals  
for the Inyo National Forest

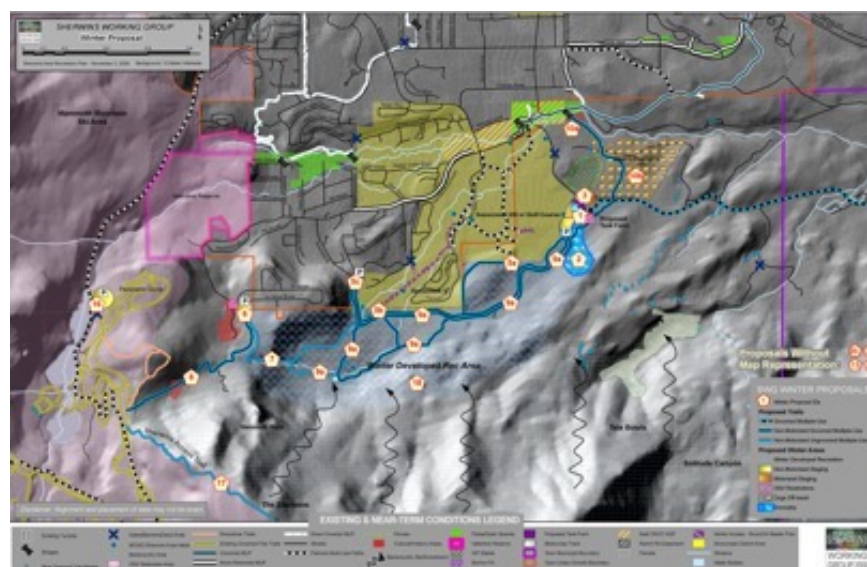


*as developed by*

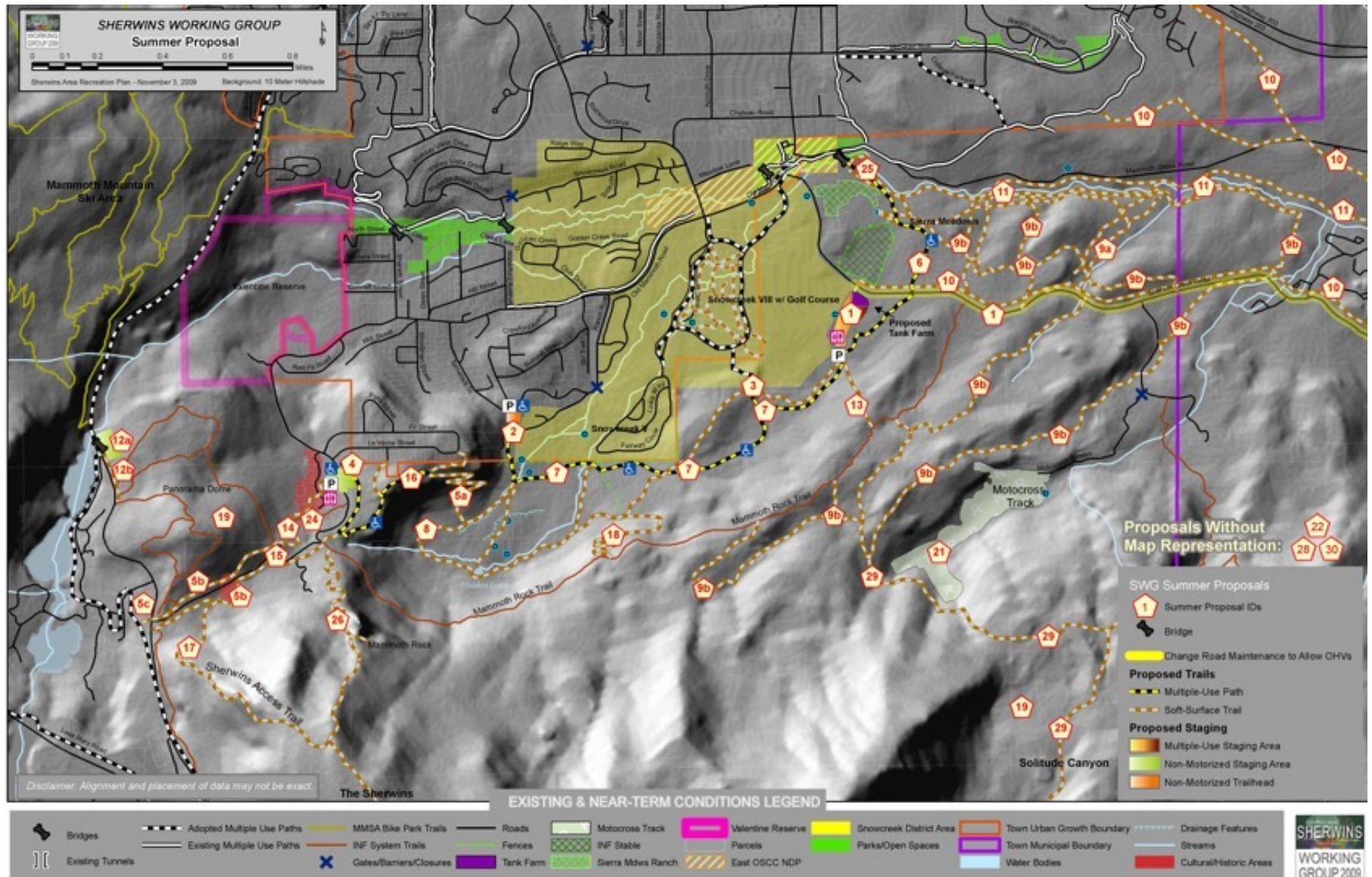
The Sherwins Working Group

November 3, 2009













**Thank You!**

