



*Mammoth Lakes*TM
CALIFORNIA



MAMMOTH LAKES
FIRE PROTECTION DISTRICT

Radio System Update

Presented by:
Jeff Edelson



Project Status

- Evaluation of Different Types of “systems”
 - Cost
 - Coverage
 - Reliability
 - Interoperability
 - User Goals

Selected CRIS



CRIS

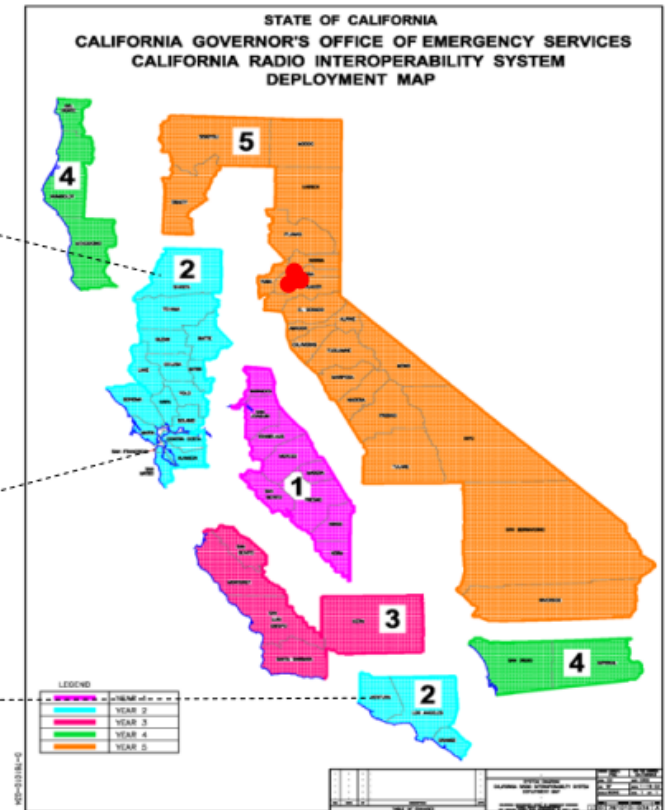
- California Radio Interoperability System
 - Large State-wide system, growing
 - State funded
 - Interoperability with state agencies
 - Cal OES is funding 4 sites this summer (equipment ordered, sites are ready)
 - Cal OES funded sites designed to provide coverage for state assets/resources along state roads/highways (not portable in building coverage or municipal coverage)

CRIS 5-YEAR PHASED DEPLOYMENT MAP

Phase 1: Completed



Phase 2: In progress



This is a map of the State of California divided into five sections, with each section corresponding to a CRIS deployment phase or year. Phase 1 shown in purple is the Central Valley Region. Phase 2 shown in cyan comprises of the North Valley, Bay Area and Tri-County Regions. Phase 3 shown in pink is the Central Coast Region. Phase 4 shown in green consists of the North Coast and Southern Border Regions. Phase 5 shown in orange includes the Inland Region and other fill-in areas.

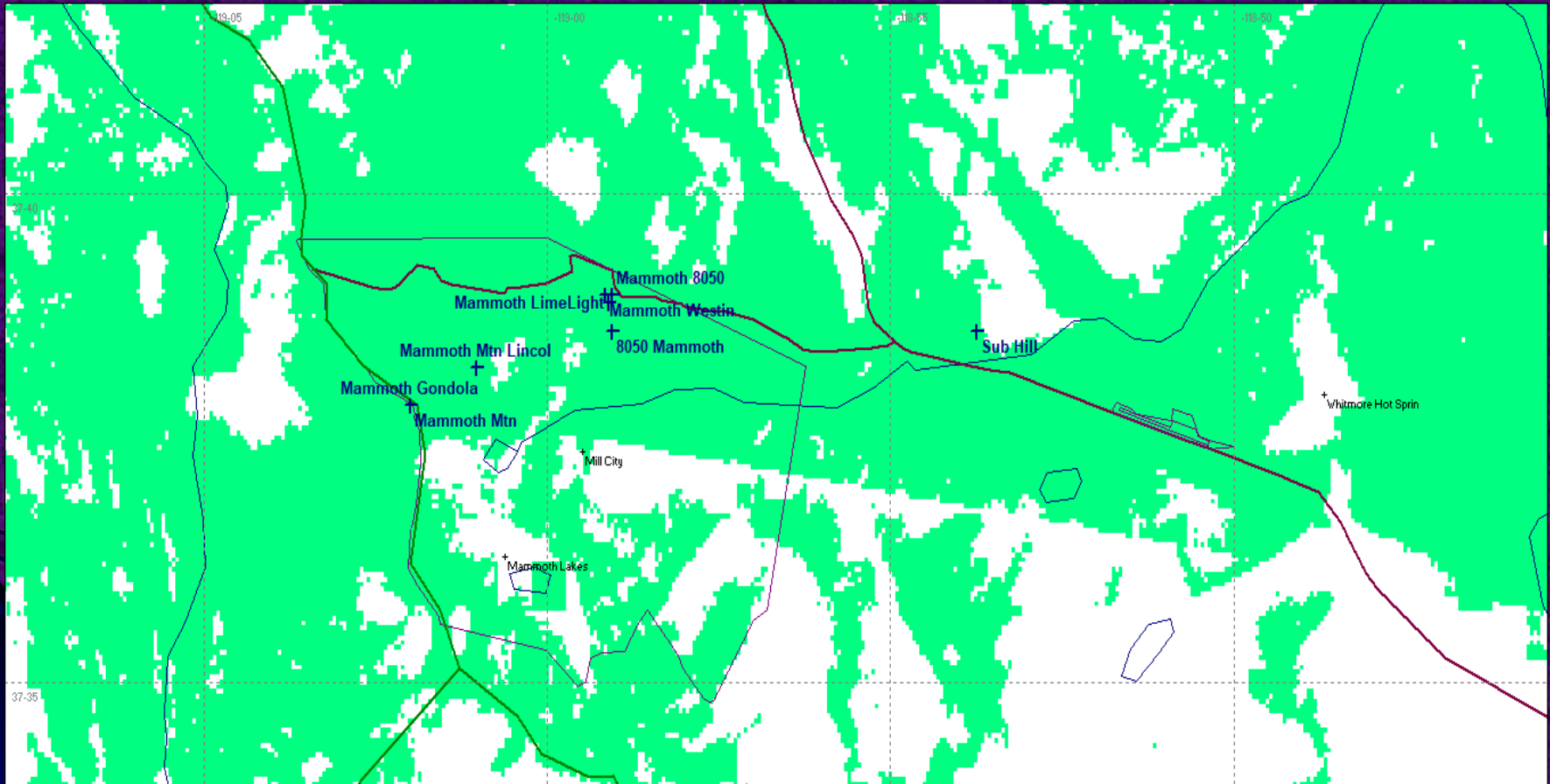
Additional Site Needs

- Lincoln Mountain (Mammoth Ski Area)
- MLFPD Station #1

Goal was to provide adequate coverage while leveraging existing infrastructure

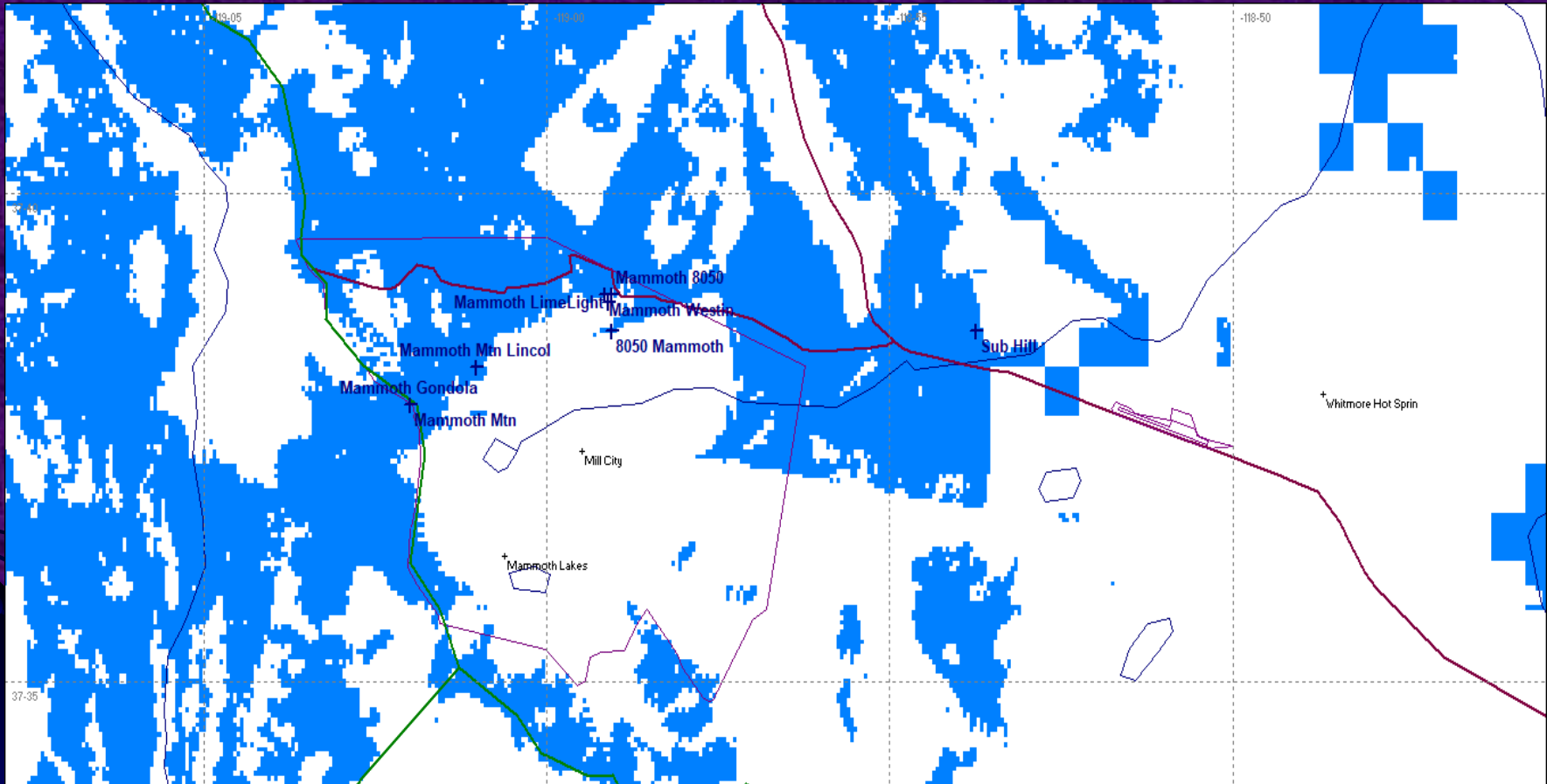


Mammoth Mtn



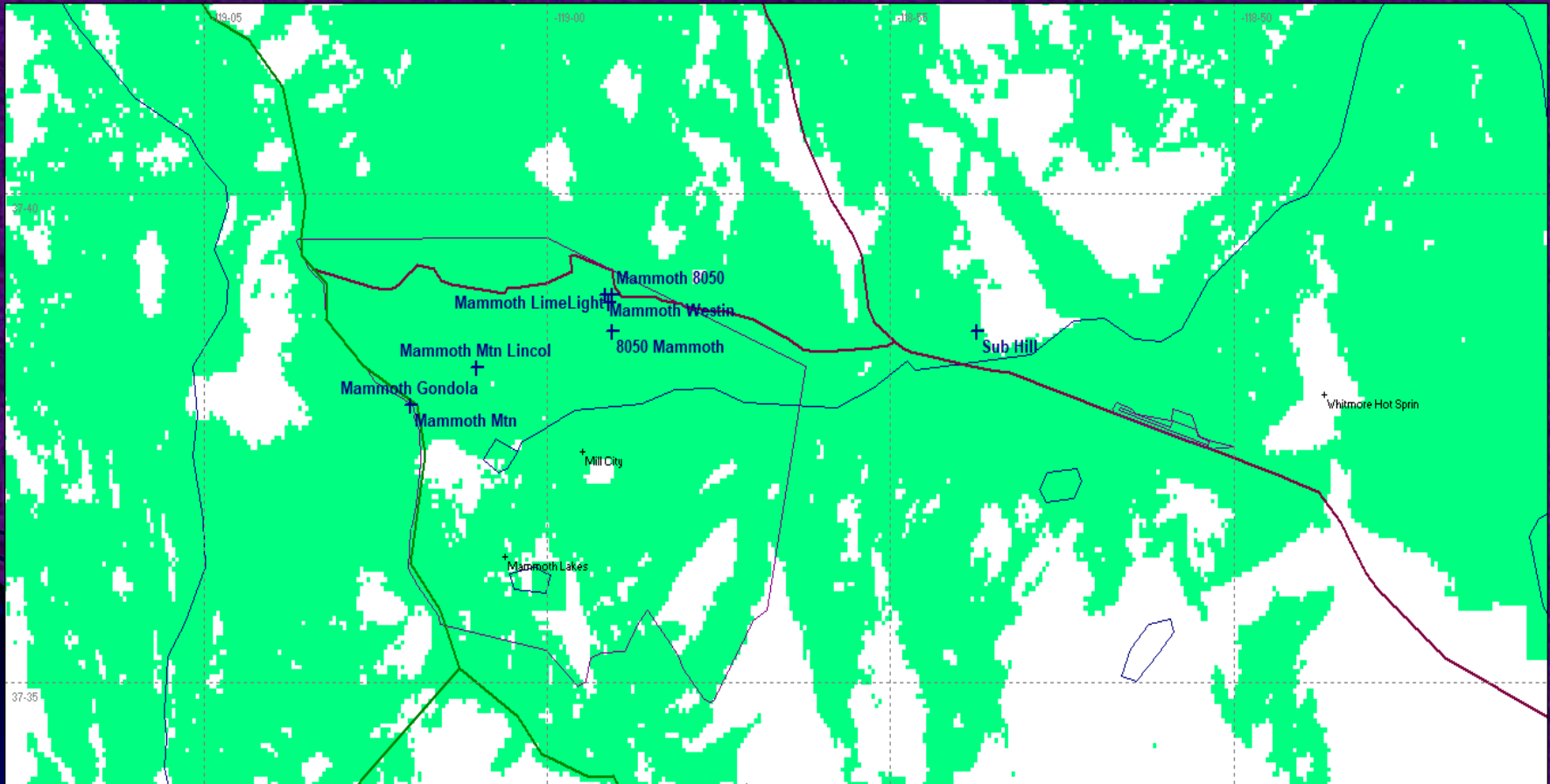
Tback, Portable, Outdoor, -
93dBm

Mammoth Mtn



Tback, Portable, Indoor, with 20dB building attenuation

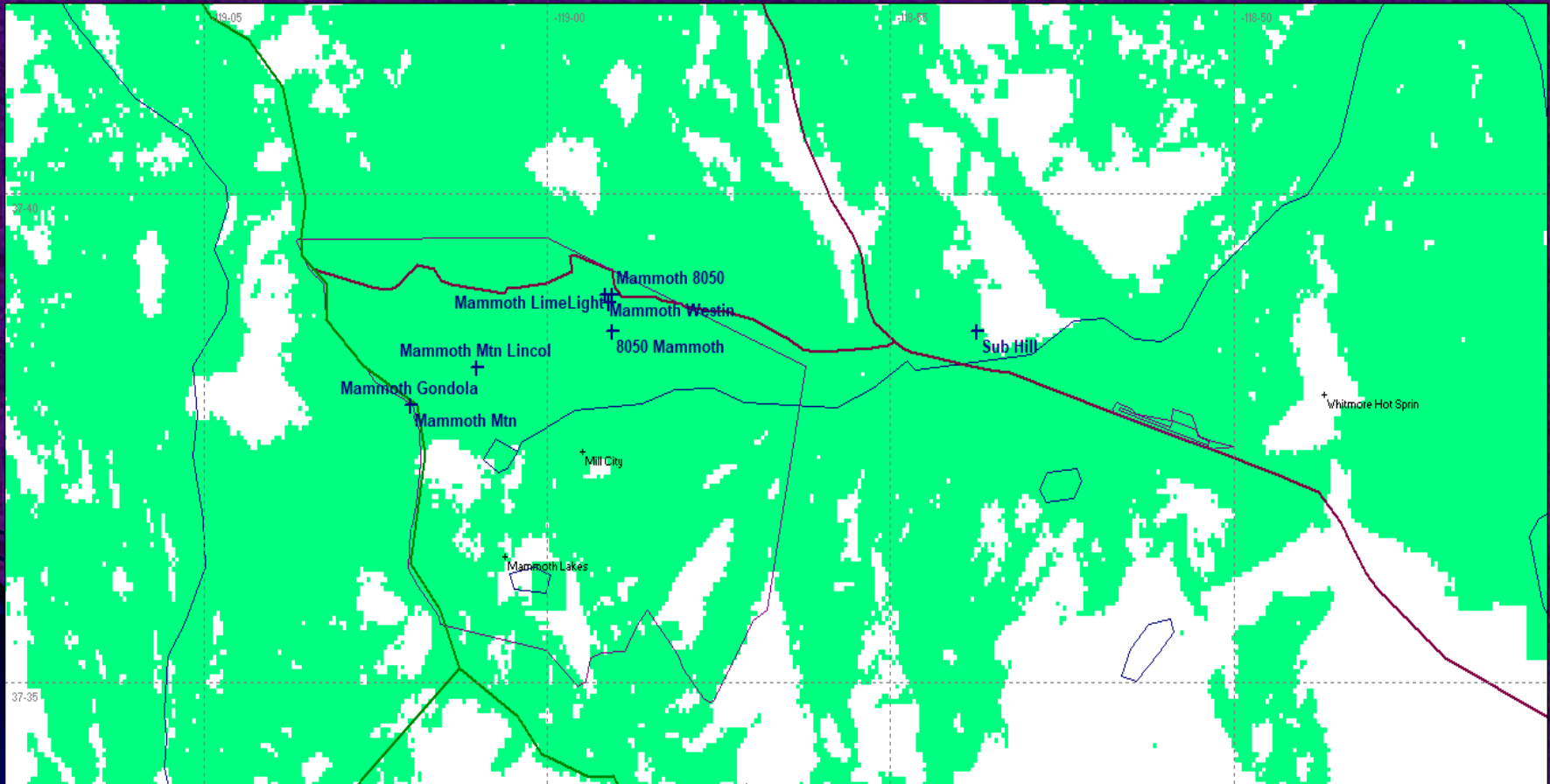
Mammoth Mtn & Mammoth Lakes 8050



Tback, Portable, Outdoor, -
93dBm

[illegible]

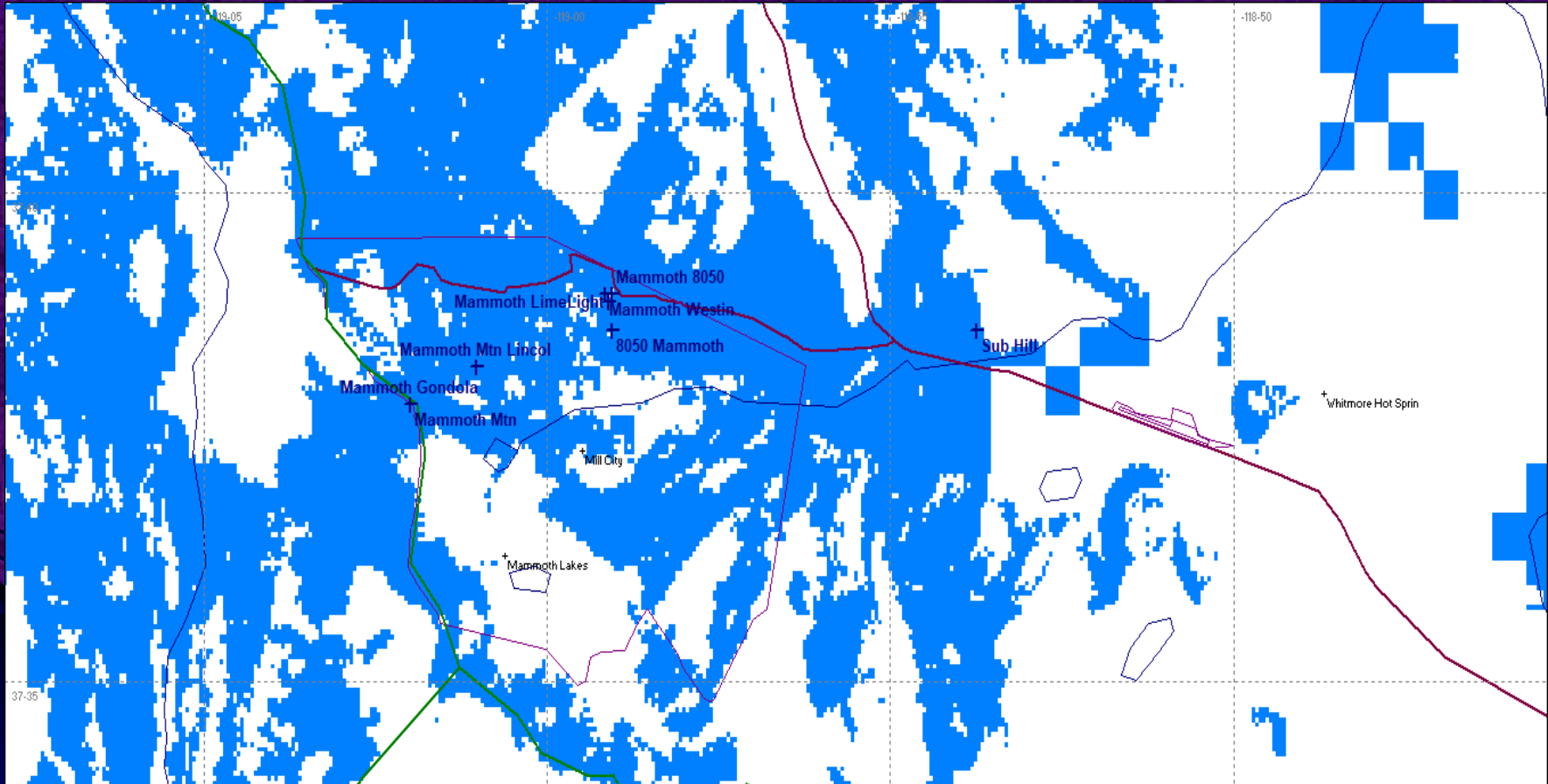
Mammoth Mtn & Mammoth Lakes Fire Station #1



Tback, Portable, Outdoor, -
93dBm



Mammoth Mtn & Mammoth Lakes Fire Station #1

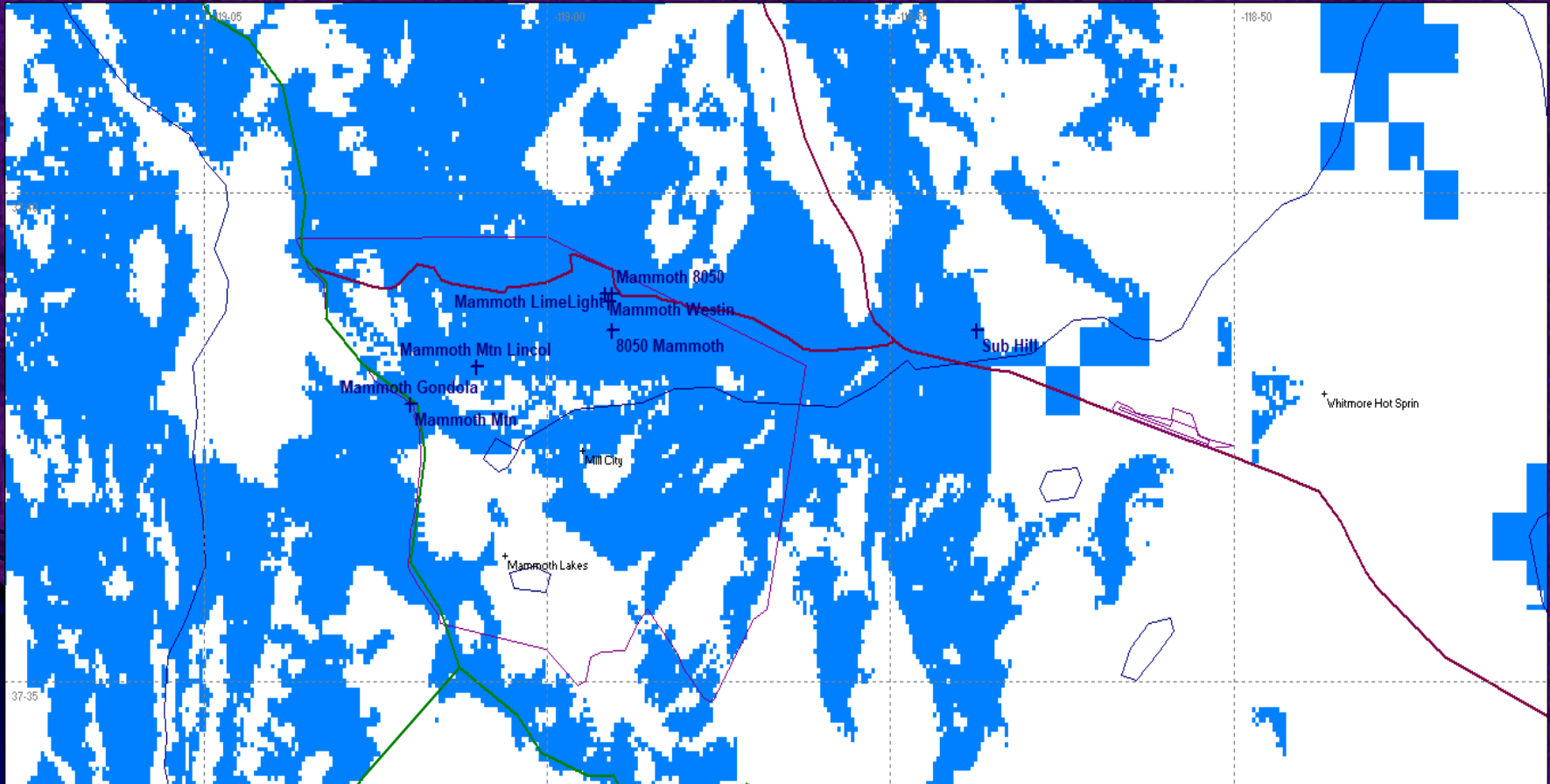


Tback, Portable, Indoor, with 20dB building attenuation

A map of the Mammoth Lakes area in California. The map shows a network of roads, including a major highway running horizontally across the middle. Several locations are marked with blue dots and labeled: Mammoth 8050, Mammoth LimeLight, Mammoth Westin, 8050 Mammoth, Mammoth Mtn Lincol, Mammoth Gondola, Mammoth Mtn, Mill City, Mammoth Lakes, Sub Hill, and Whitmore Hot Spring. The map also shows a river flowing from the top left towards the bottom right, and several smaller lakes or ponds. The background is a light beige color with a grid of dashed lines.



Mammoth Mtn & Mammoth Lakes Lime Light



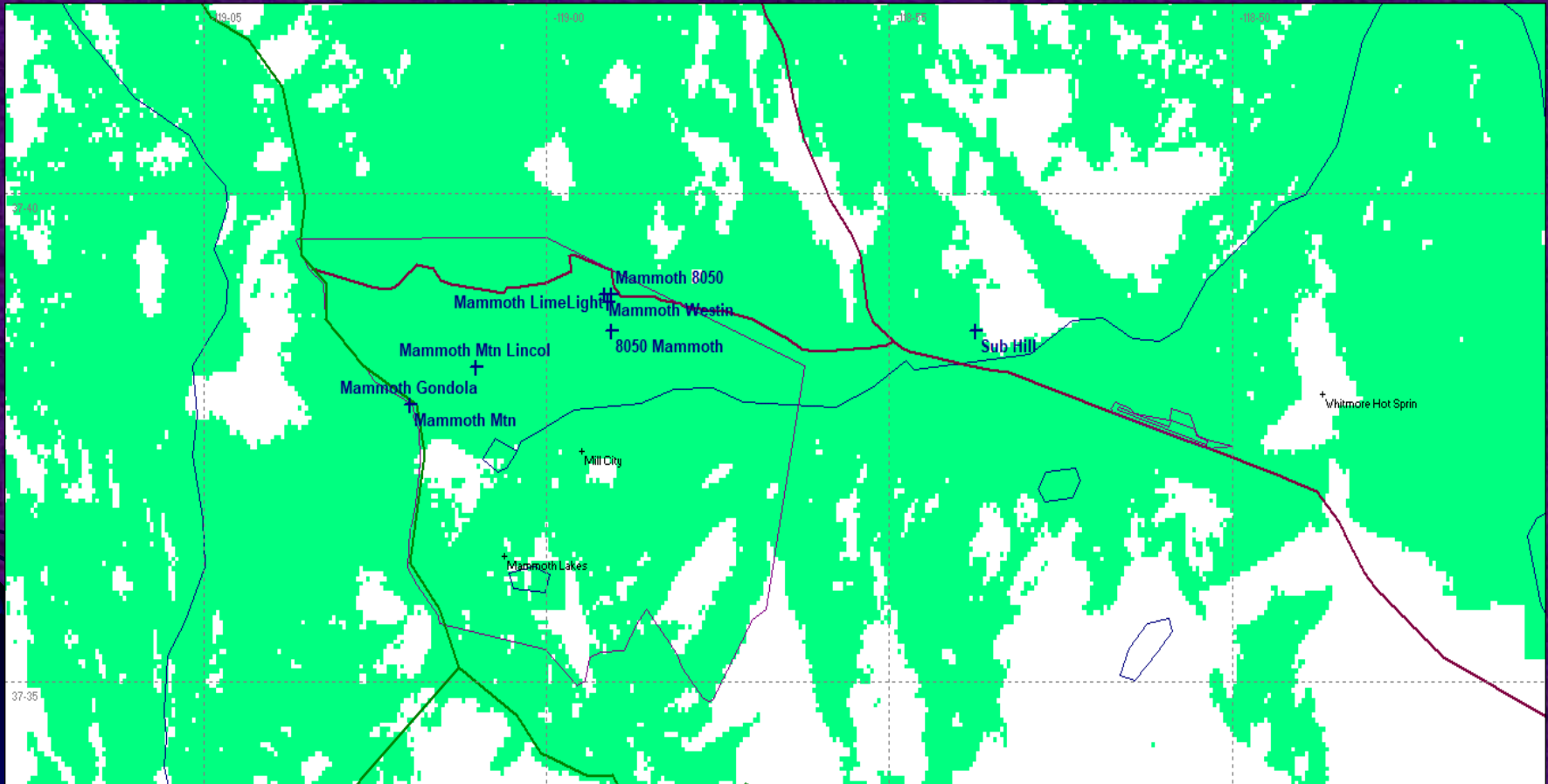
**Tback, Portable, Indoor, with 20dB building
attenuation**



[illegible]

Tback, Portable, Indoor, with 20dB building attenuation

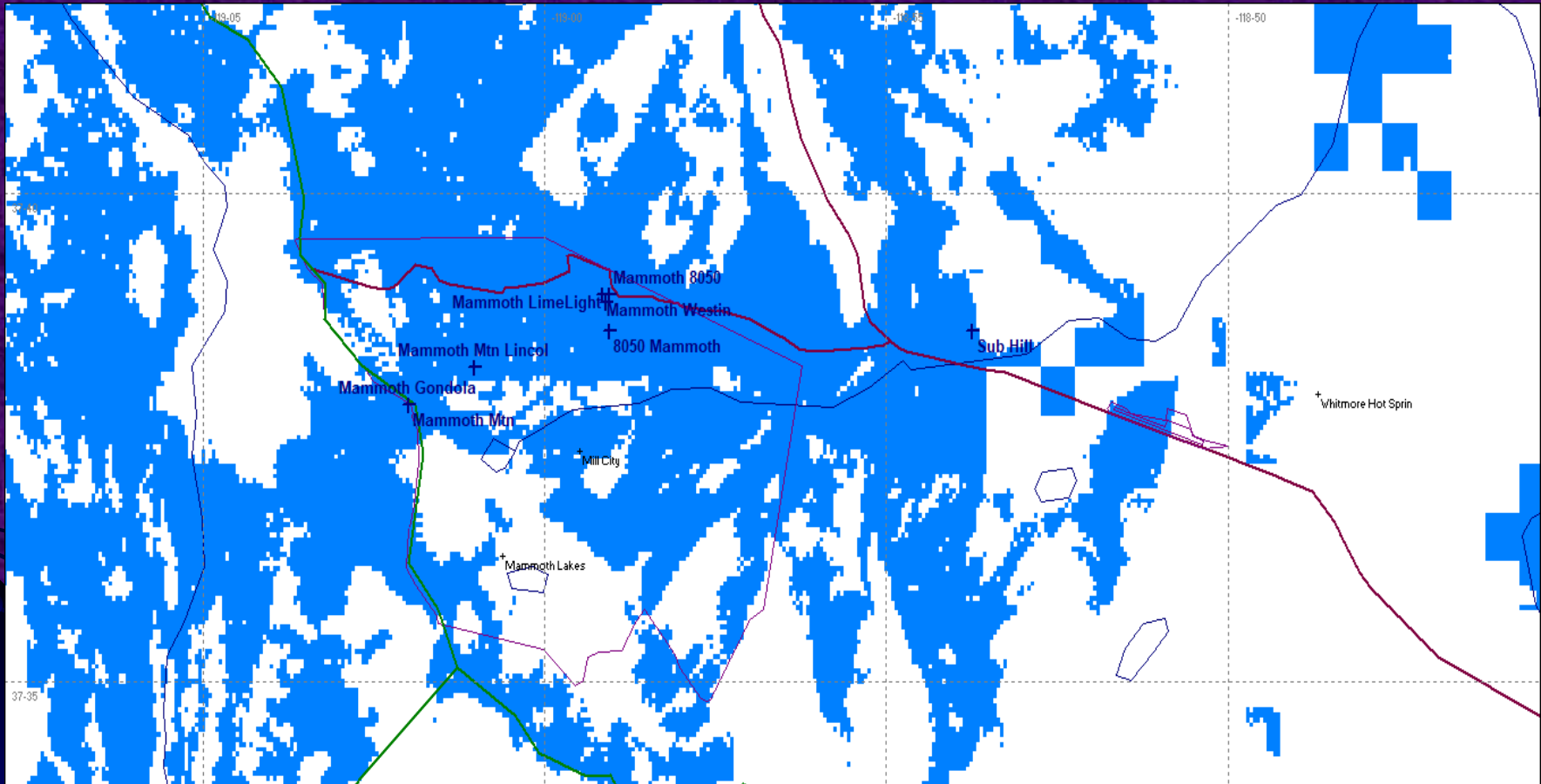
Mammoth Mtn & Mammoth Lakes Westin



Tback, Portable, Outdoor, -
93dBm

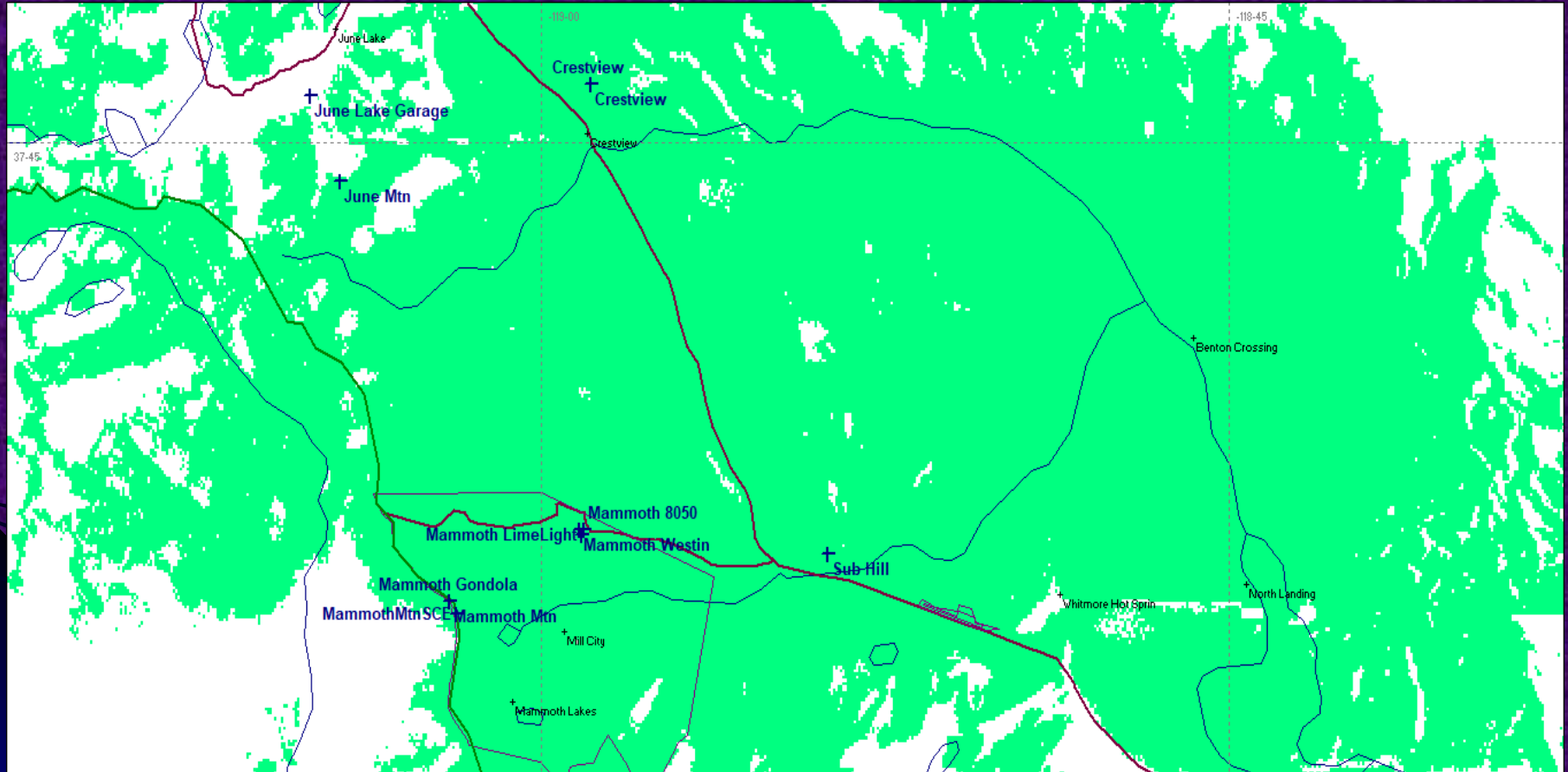


Mammoth Mtn & Mammoth Lakes Westin



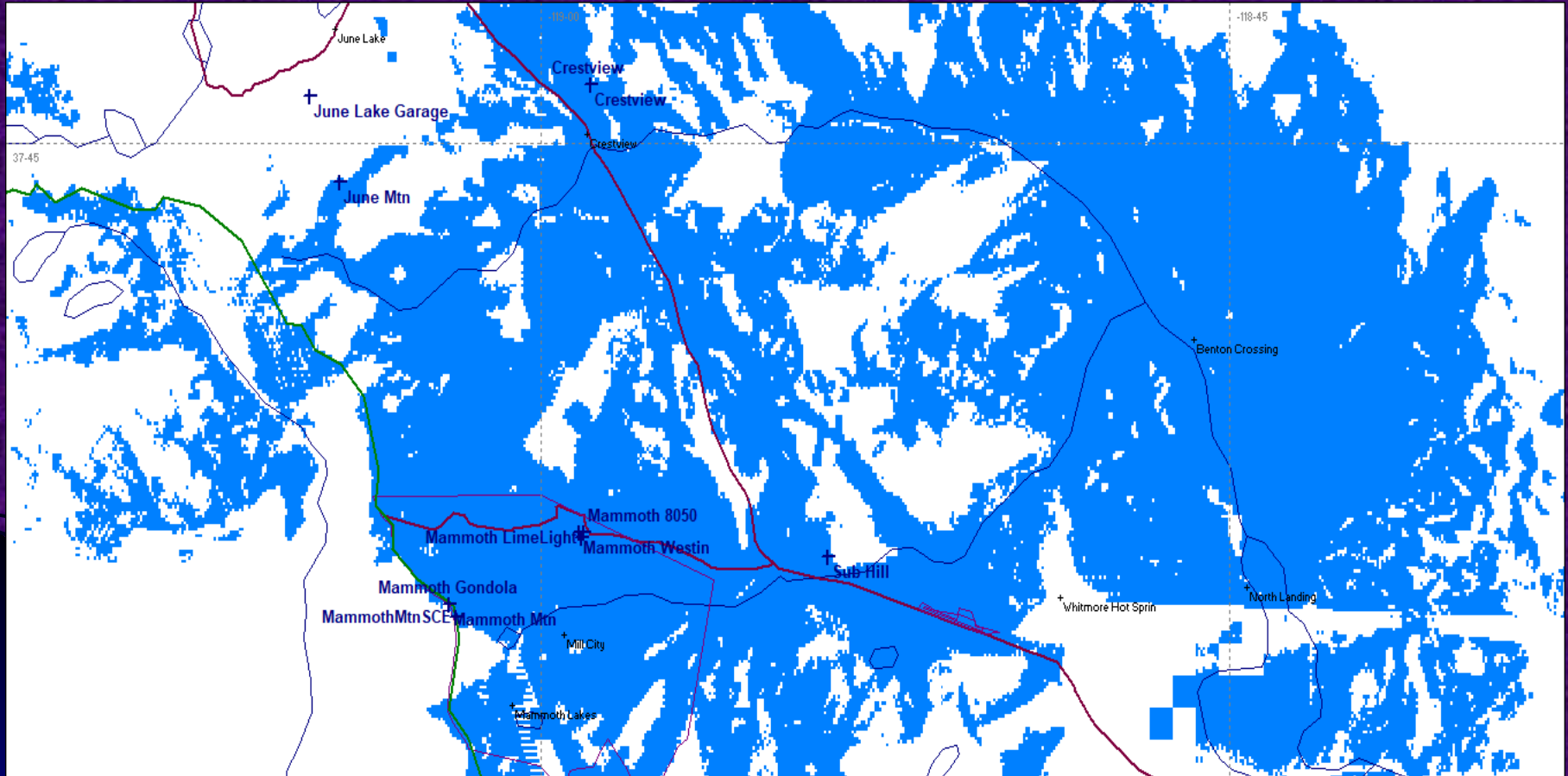
Tback, Portable, Indoor, with 20dB building attenuation

Mammoth Lakes Fire Station #1 and Lincoln



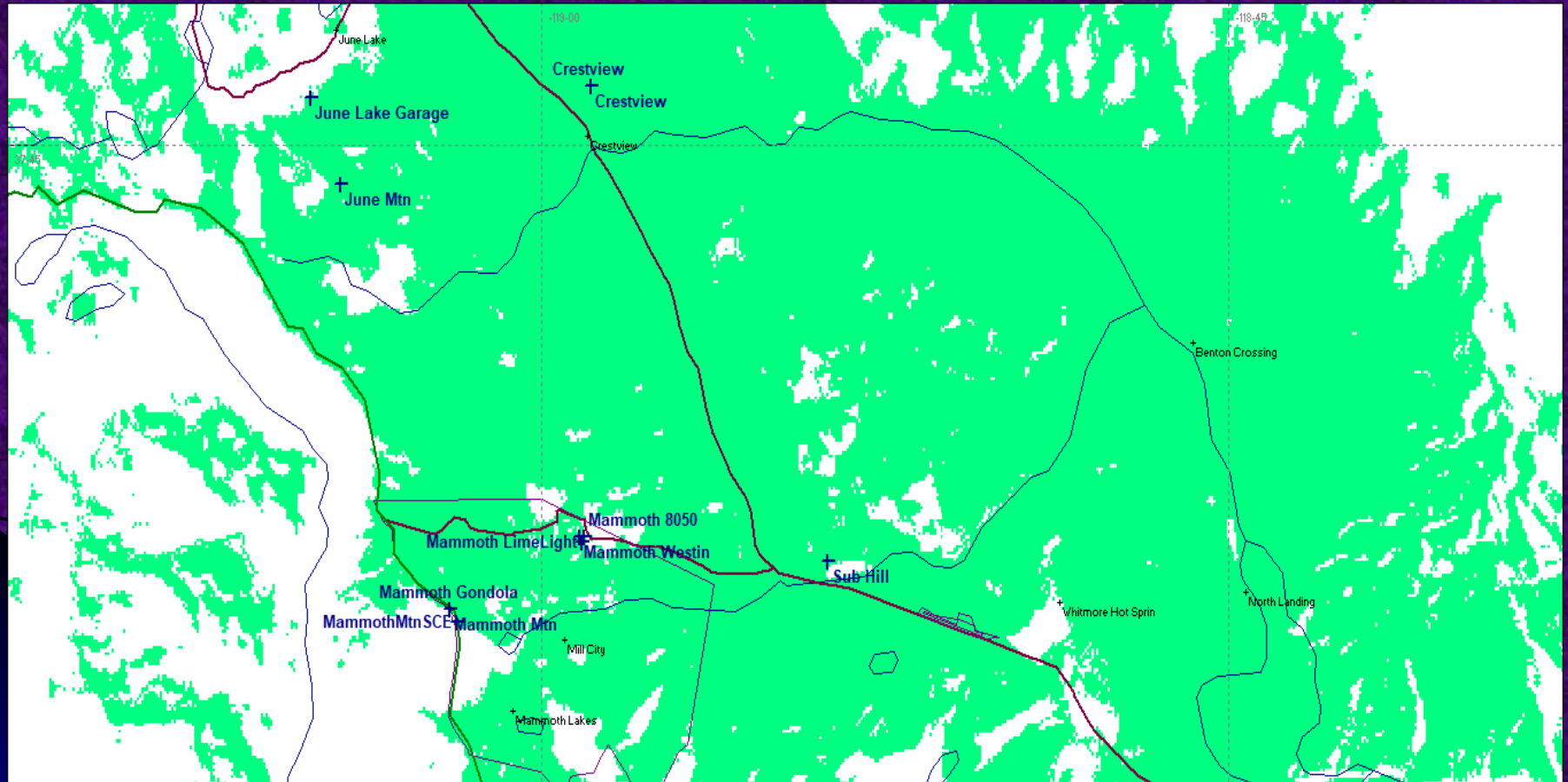
Tback, Portable, Outdoor, -
93dBm

Mammoth Lakes Fire Station #1 and Lincoln



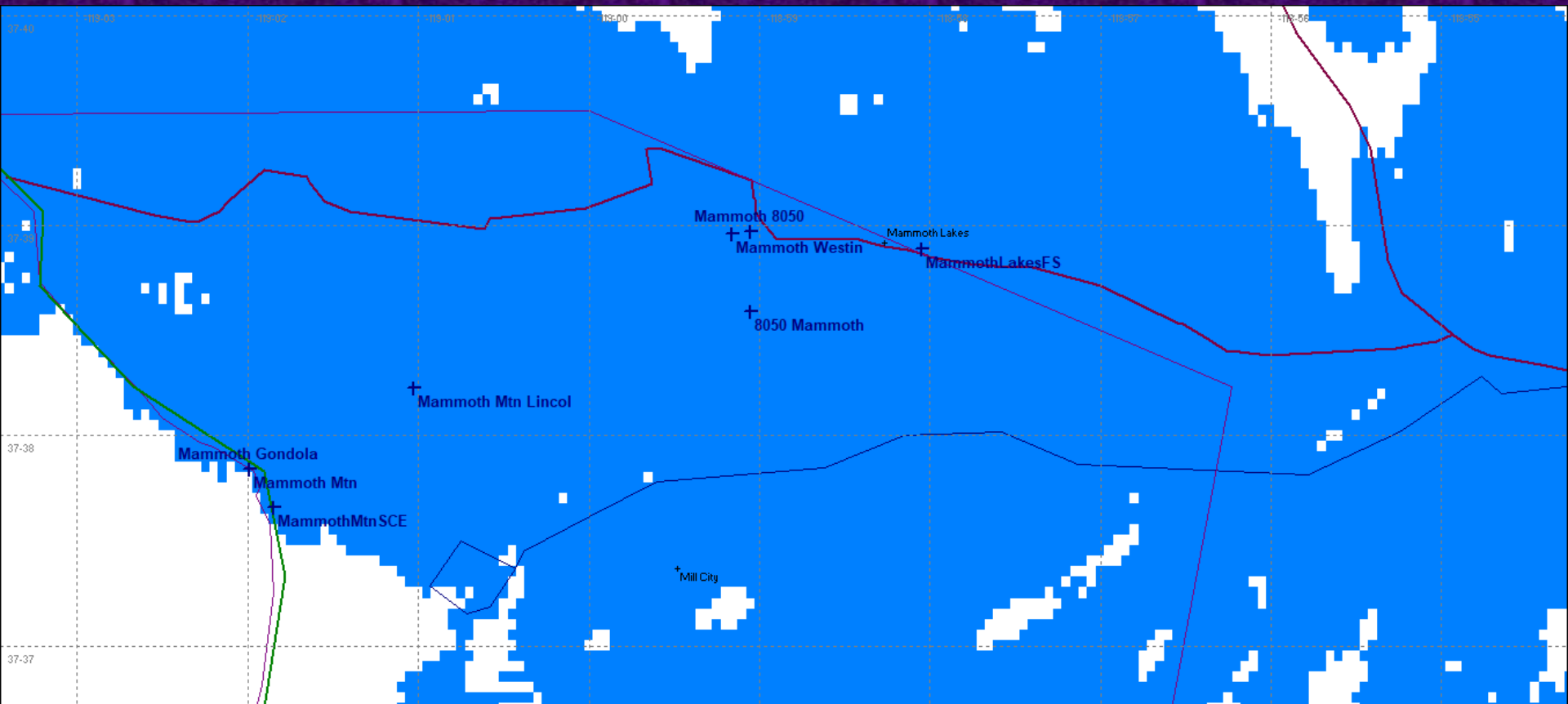
Tback, Portable, Indoor, with 20dB building
attenuation

Crestview Only



Tback, Portable, Outdoor, -
93dBm

Total Predicted Coverage



Current Project Position

- Site walkthroughs with Cal OES in June
 - Perform any needed improvements/upgrades to Lincoln or Station #1 as identified
- Order site equipment June/July
- Work with other Mono County agencies on channel planning
- Discuss interoperability
- Develop cutover plan
- Work on integration with Mono Dispatch
- Evaluate, select and order subscriber units