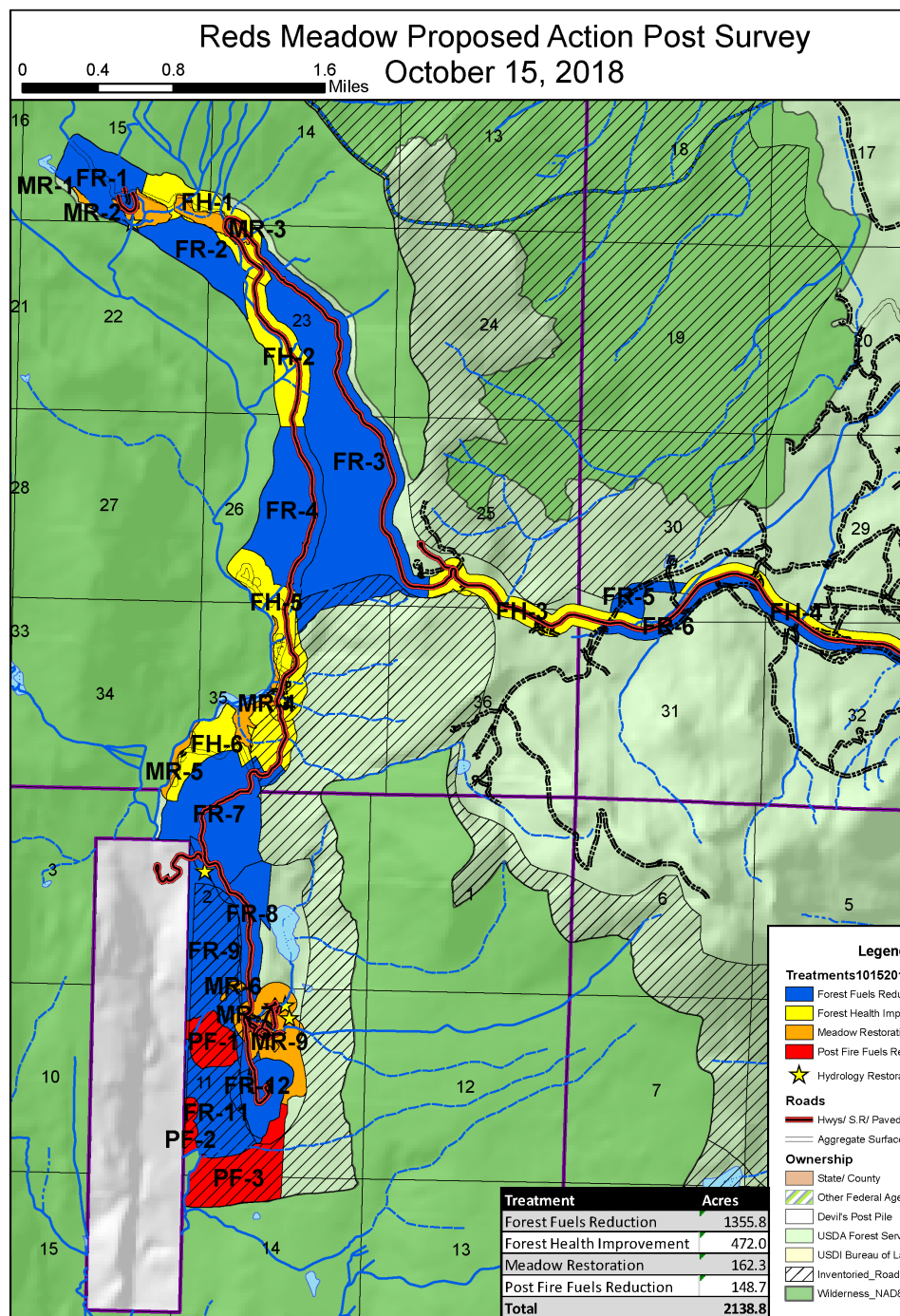


ESCCRP Progress Update

TOML Council Meeting
Oct 5, 2022



Implementation Progress Update

- **Spring 2022** – Lakes Basin 336 Acres Pile Burning (**INF**, **NFF**)
- **Summer 2022- Completed Units- CAL FIRE**
 - (FR1, FR-2, FR4, FH-3, FH-4)- 466 acres-Whitebark
 - Inyo Craters (98 bonus acres + 73 acres from INF contract)
- **Fall 2022- CAL FIRE** (weather permitting)
 - FR-3-(Broadcast Burn 300 Acres) -INF
- **Summer 2023-CAL FIRE**
 - Non-Fed parcels (hand thin 80 acres)- Whitebark
 - Hwy 395 Median (combination thin- 118 acres)- Whitebark
 - Three Creeks (mechanical thin 550 acres)- NFF
 - Lakes Basin (mechanical thin- 60 acres)- Whitebark/MLFSC
 - Shady Rest CG (Hand thin 80 acres,)- Whitebark
- **Summer 2024 –SNC** Directed Grant Funding Invite
 - Any uncompleted Units from 2023
 - All remaining FR & FH Units Reds Meadow Valley/ Sherwin Creek Aspen Cont. (TBD)

Reds Meadow – Unit FR-2

Agnew Meadow Units

Before



After



Below Sherwin Creek Campground – Unit T-6

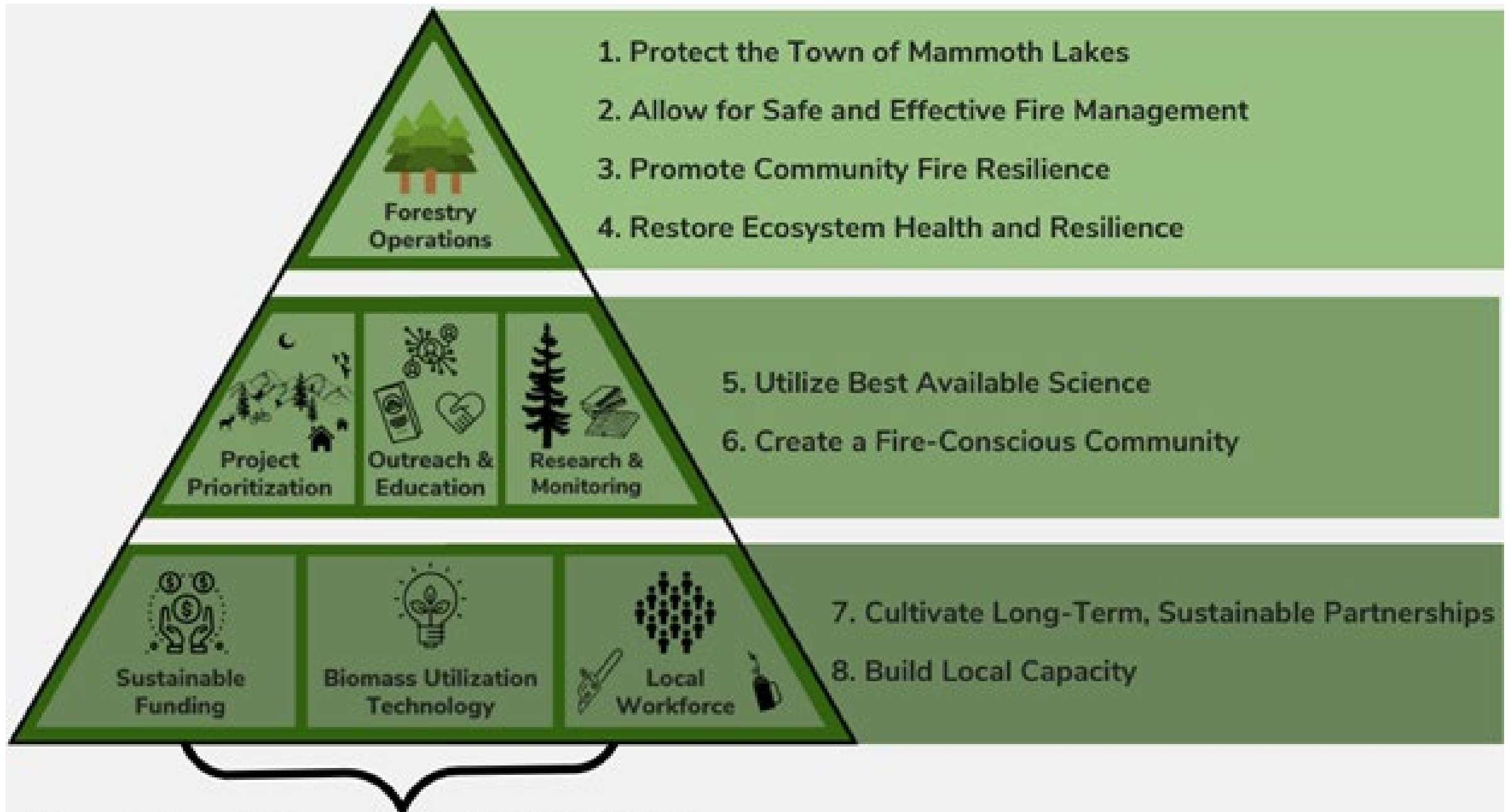
(Photo point: Mammoth Creek just above the footbridge)

Before

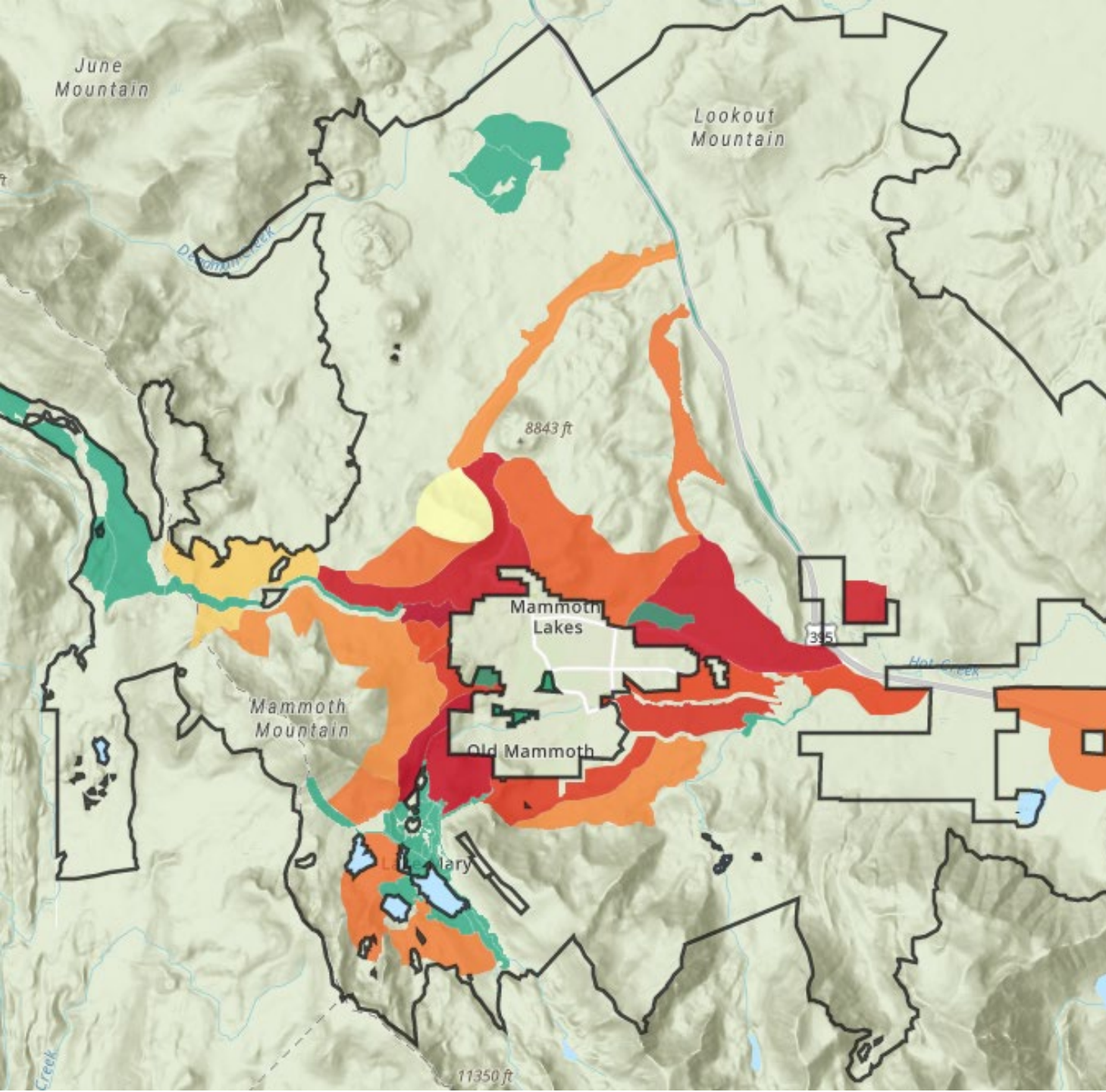


After





Foundational Components to ESCCRP Success



ESCCRP- 10 K Priority Acres

6515 Acres Mechanical - \$2,458K/ac
1172 Acres Helicopter - \$7,773k/ac
1692 Acres Hand Thin - \$2,365k/ac

Total Priority Acres Cost = \$30 Million

Benefits beyond community resilience...

Water Benefits= UOR
ESCCRP Treatments
(40% B/A reduction in
50% of project area)

8,500-10,000 AF
annually based on
avg ppt.

2022 Market Index =
\$1,000/ AF



GHG= Upper
Owens/Lower Mono
Basin “Fireshed”

AWE- GHG reduction
occur when emissions are
lower compared to no
action alternative

Lakes Basin & June pilots
(500 metric tons)

30,000 metric tons of
CO₂e over 40 years

Benefits beyond community resilience...





**FOREST
RESILIENCE
BOND**

Introduction to the FRB

Prepared for the ESCCRP Financial Advisory Team

September 8, 2022



Annapurna Holtzapple
Nick Wobbrock
Phil Saksa

BLUE  FOREST
CONSERVATION

Potential Monetizable Benefits



Water Quality

Reduced risk of ash, sediment, and debris from large fires contaminating water sources.



Water Flow Rates

Improved water flow throughout the year resulting from precipitation retention.



Fire Protection

Reduced risk of damage to infrastructure and homes from large fires



Carbon Security

Reduced risk of large wildfire carbon emission events and protected forest carbon stocks.



Tourism and Recreation

Reduced risk of fire evacuations and smoke-caused air pollution that dissuades recreators.



WILDFIRE

COMMUNICATION SURVEY

The Whitebark Institute is working on a multi-year project to address the threat of wildfires in Mammoth Lakes and surrounding areas through forest management, fuels reduction, stakeholder coordination, and outreach and education. Your answers to this survey will help us design strategies to make our communication more effective.

We greatly appreciate you taking the time to share your thoughts.

Respondents could be selected for a **\$20** gift certificate at a range of local businesses.

TO PARTICIPATE SUBMIT SURVEY BEFORE OCT 31st 2022



SCAN ME

www.eswildfirealliance.org