

EXHIBIT "C": PROJECT PLANS

COMMUNITY RECREATION CENTER (CRC), EDISON THEATER, LIBRARY, AND ICE RINK PARKING LOTS

LIBRARY AND ICE RINK PARKING LOTS



COMMUNITY RECREATION CENTER (CRC) PARKING LOT



*PARKING LOT UNDER CONSTRUCTION.
CONTRACTOR TO CONFIRM AREA TO BE
CLEARED WITH TOWN ENGINEER.

EDISON THEATER PARKING LOT



EXHIBIT "C": PROJECT PLANS

MAINTENANCE DISTRICT 93-4 ("THE BLUFFS")

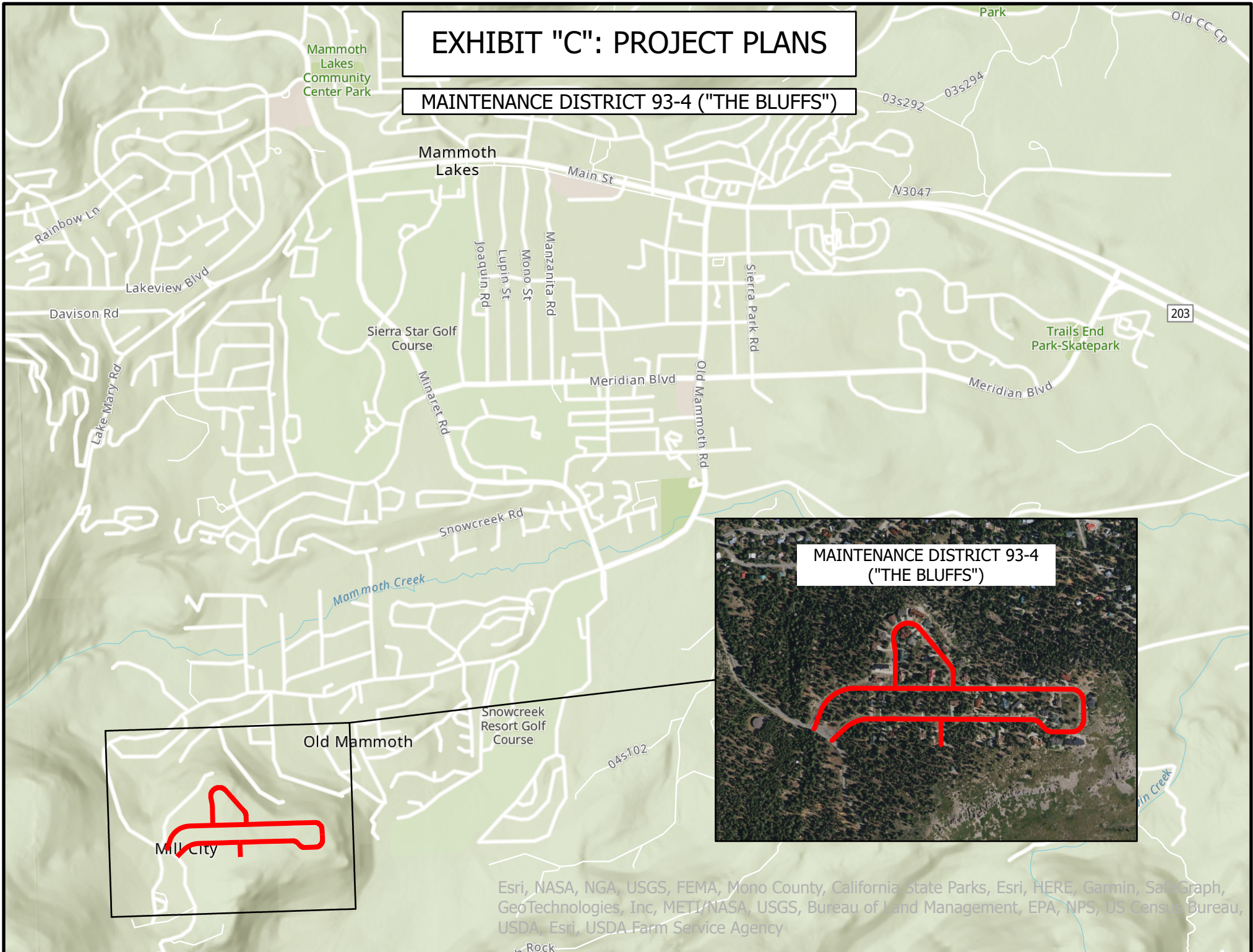


EXHIBIT "C": PROJECT PLANS

JUNIPER RIDGE ASSESSMENT DISTRICT



EXHIBIT "C": PROJECT PLANS

SAWMILL CUTOFF ROAD, SHERWIN CREEK ROAD & PARKING LOT MAPS

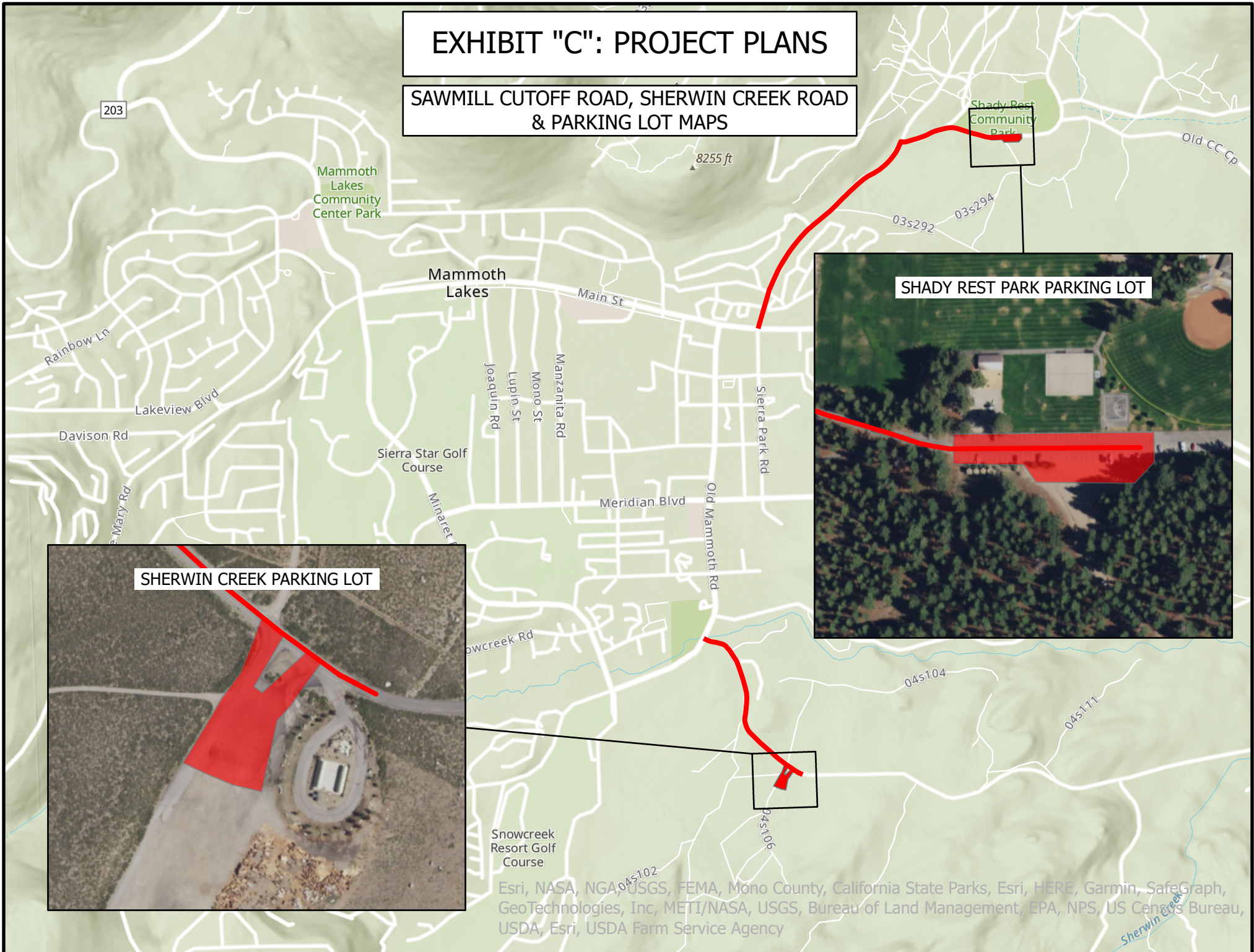


EXHIBIT "C": PROJECT PLANS

TAVERN PARK & RIDE, POLICE PARKING LOT,
THOMPSON WAY & MONO COUNTY CIVIC CENTER



EXHIBIT "C": PROJECT PLANS

210 COMMERCE DRIVE TRANSIT LOT & FIRE STATION 2 ESTA TURNAROUND



EXHIBIT "C": PROJECT PLANS

HILLSIDE DRIVE, COMMUNITY CENTER, AND TENNIS COURT PARKING LOTS

