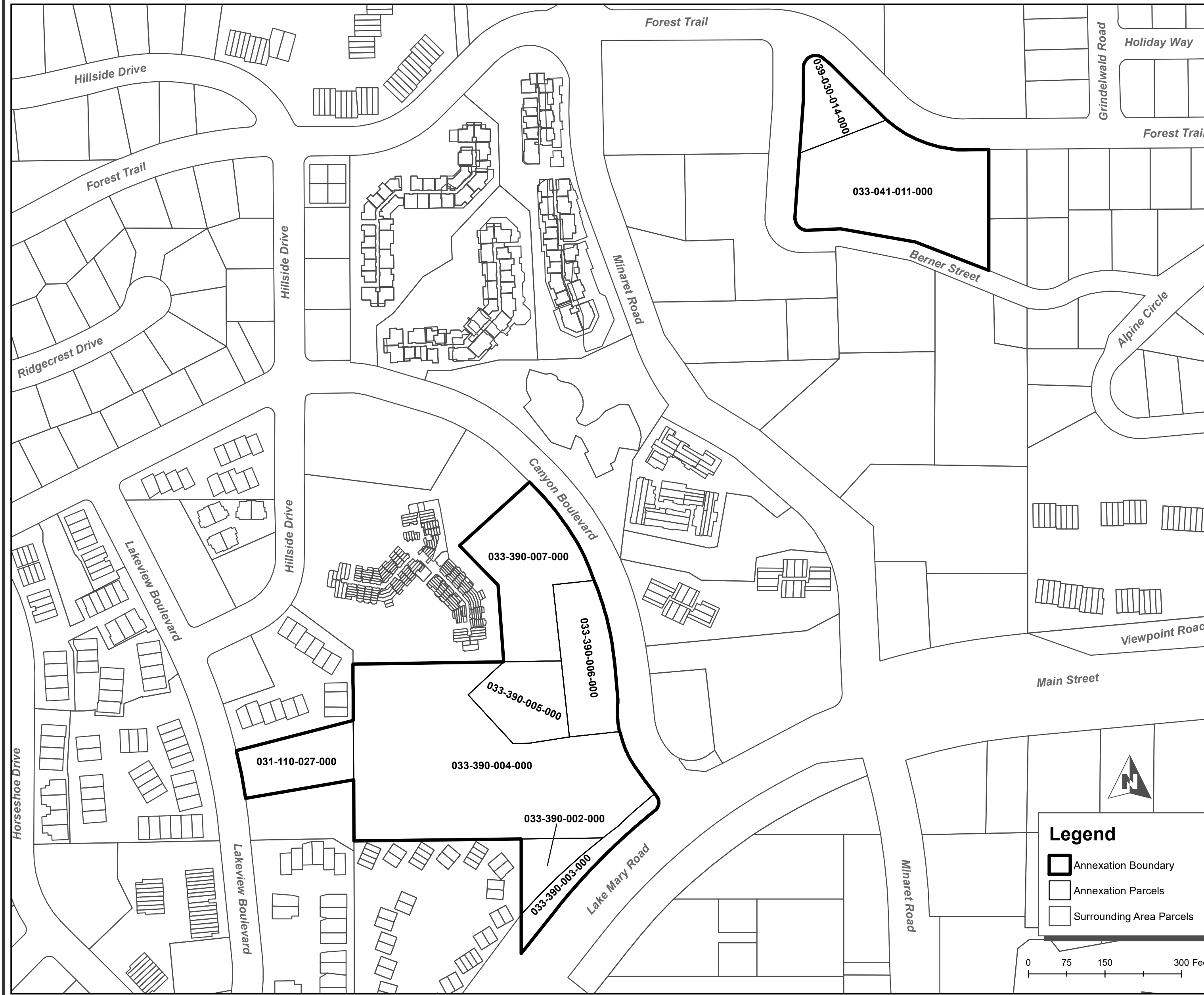


ANNEXATION MAP NO. 7 OF TOWN OF MAMMOTH LAKES COMMUNITY FACILITIES DISTRICT NO. 2013-3 (TRANSIT SERVICES)

TOWN OF MAMMOTH LAKES
COUNTY OF MONO
STATE OF CALIFORNIA



FILED IN THE OFFICE OF THE TOWN CLERK OF THE TOWN OF MAMMOTH LAKES THIS _____ DAY OF _____, 2023.

TOWN CLERK
TOWN OF MAMMOTH LAKES
MONO COUNTY, CALIFORNIA

I HEREBY CERTIFY THAT THE WITHIN MAP SHOWING THE PROPOSED BOUNDARIES OF ANNEXATION NO. 7 TO THE TOWN OF MAMMOTH LAKES COMMUNITY FACILITIES DISTRICT NO. 2013-3 (TRANSIT SERVICES), TOWN OF MAMMOTH LAKES, COUNTY OF MONO, STATE OF CALIFORNIA, WAS APPROVED BY THE TOWN COUNCIL OF THE TOWN OF MAMMOTH LAKES AT A REGULAR MEETING THEREOF, HELD ON THE _____ DAY OF _____, 2023, BY ITS RESOLUTION NO. _____.

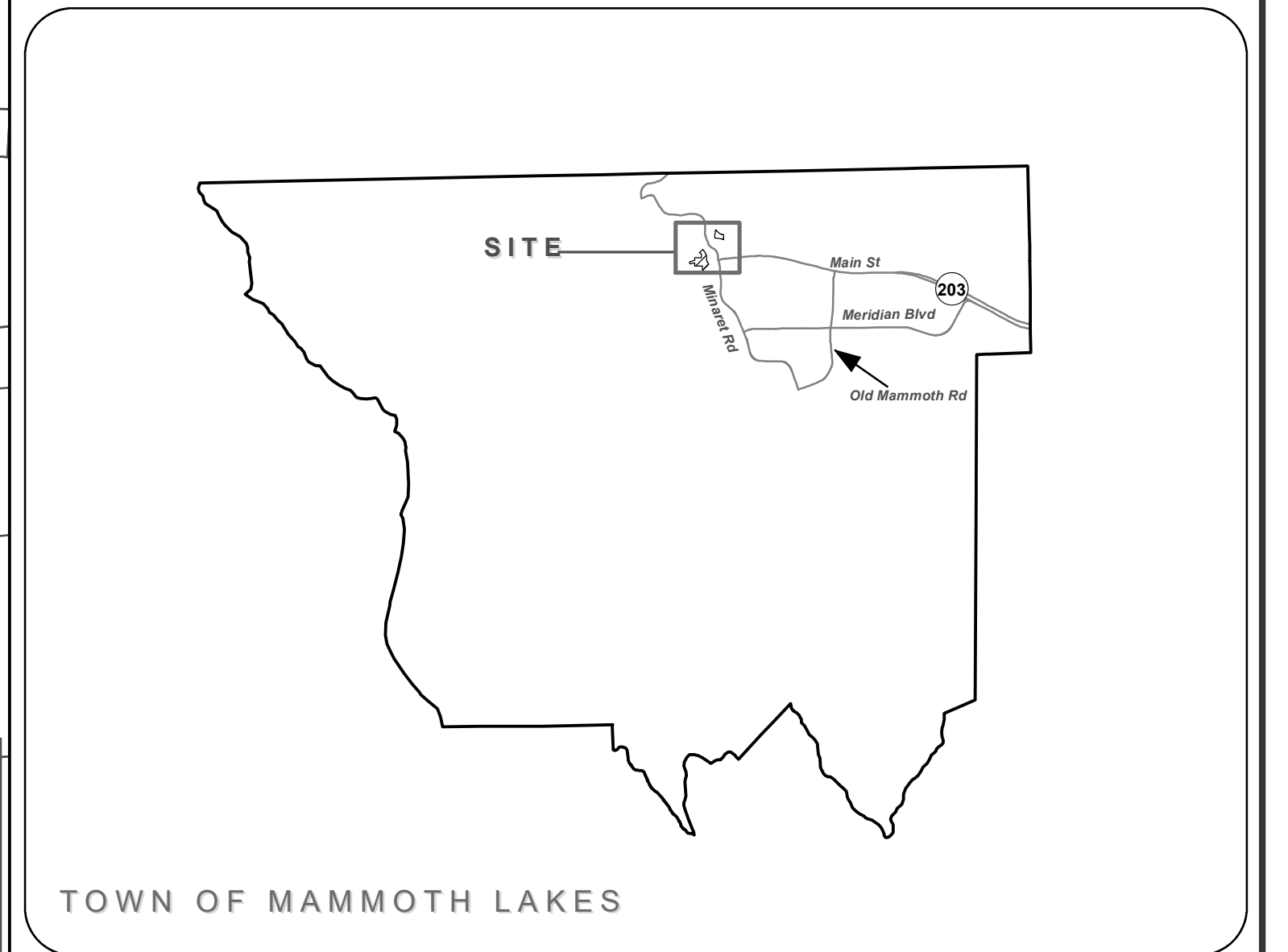
TOWN CLERK
TOWN OF MAMMOTH LAKES
MONO COUNTY, CALIFORNIA

FILED THIS _____ DAY OF _____, 2023, AT THE HOUR OF _____ O'CLOCK _____ M, IN BOOK _____ OF MAPS OF ASSESSMENT AND COMMUNITY FACILITIES DISTRICTS AT PAGE _____ IN THE OFFICE OF THE COUNTY RECORDER OF THE COUNTY OF MONO, STATE OF CALIFORNIA. INSTRUMENT NUMBER: _____.

COUNTY RECORDER
COUNTY OF MONO, CALIFORNIA

FOR PARTICULARS OF THE LINES AND DIMENSIONS OF ASSESSOR PARCELS, REFERENCE IS MADE TO THE MAPS OF THE ASSESSOR, COUNTY OF MONO, STATE OF CALIFORNIA.

REFERENCE IS HEREBY MADE TO THAT CERTAIN MAP ENTITLED "MAP OF PROPOSED BOUNDARIES OF TOWN OF MAMMOTH LAKES COMMUNITY FACILITIES DISTRICT NO. 2013-3, TOWN OF MAMMOTH LAKES, COUNTY OF MONO, STATE OF CALIFORNIA" FILED THE 21ST DAY OF MARCH, 2013, IN BOOK 2 OF MAPS OF ASSESSMENT AND COMMUNITY FACILITIES DISTRICTS AT PAGE 76 IN THE OFFICE OF THE COUNTY RECORDER FOR THE COUNTY OF MONO, STATE OF CALIFORNIA, WHICH THIS ANNEXATION MAP AFFECTS.



Source: Mono County GIS
Geographic Coordinate Reference: GCS North American 1983
Projection: NAD 1983 StatePlane California III FIPS 0403 Feet

