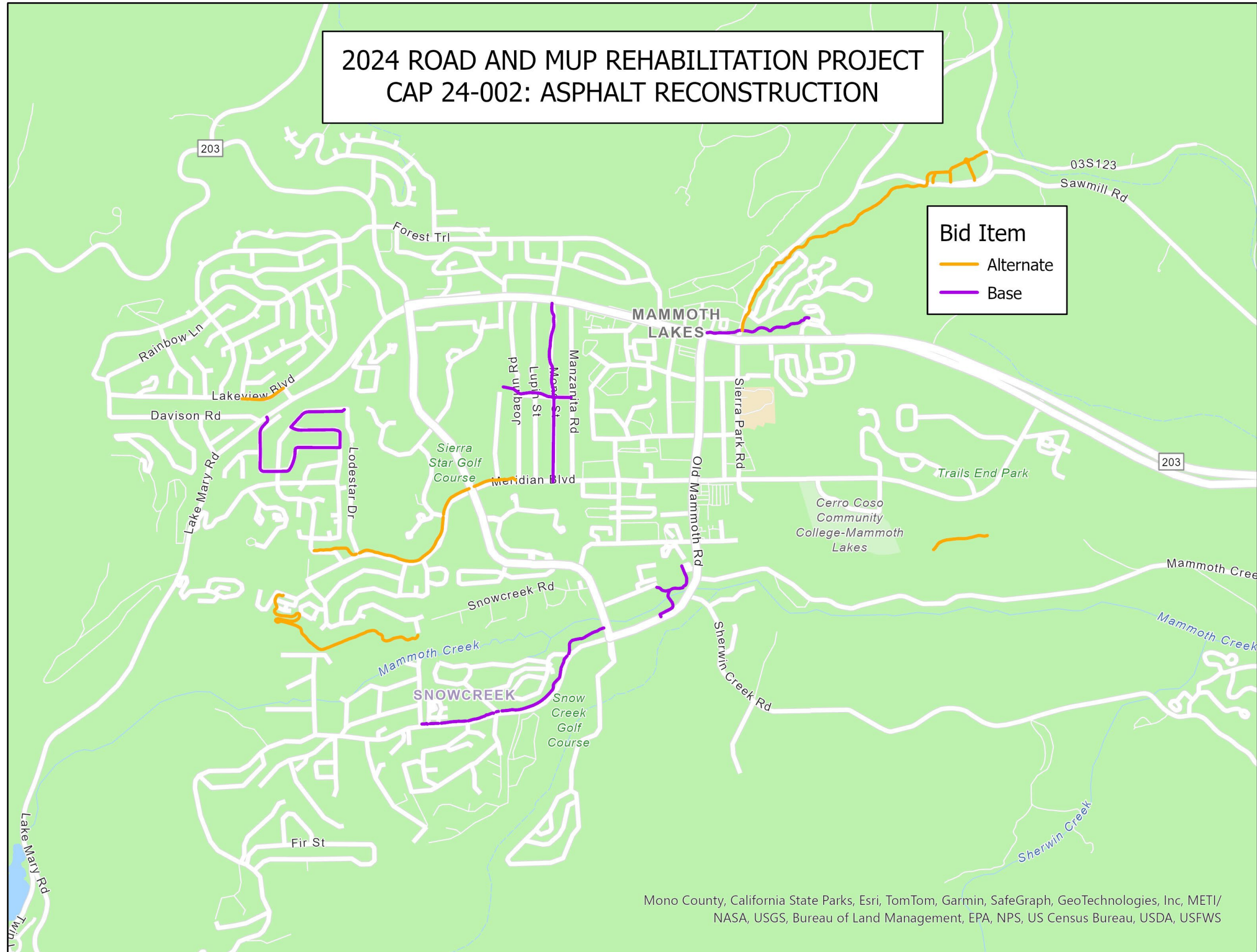


2024 ROAD AND MUP REHABILITATION PROJECT CAP 24-002: ASPHALT RECONSTRUCTION



Mono County, California State Parks, Esri, TomTom, Garmin, SafeGraph, GeoTechnologies, Inc, METI/
NASA, USGS, Bureau of Land Management, EPA, NPS, US Census Bureau, USDA, USFWS