

Parks and Recreation Commission Meeting  
August 6, 2024

# Community Recreation Center (CRC) ***Mammoth RecZone***



# Operations Update

- Total Visits: **4,236** (73 operating days)
- Revenue: **\$8,912.00**
- Inyo/Mono K-12 \$3 Admission: **628 local students**
- Summer Camps: **2,136**
- Friday Fun Day: **24**
- FREE Friday Fun Day: **228**
- Summer Play Membership Sales (51):
  - Adult: **24**
  - Senior/Military/College: **10**
  - Inyo/Mono Student: **14**
  - Family: **3**
- Scheduled Closing Day:  
**Sunday, September 8**



\*May 18 - July 29, 2024

# Summer Play Membership



**SUMMER PLAY MEMBERSHIP**



**ALL SUMMER  
Pool + Play**

**ADULT: \$135 • SEN/MIL: \$112 • YOUTH: \$90 • INYO/MONO STD: \$45 • FAMILY: \$315**

Includes unlimited access to WHITMORE POOL and MAMMOTH RECZONE during scheduled Lap Swim, Public Swim, Open Play and Pick-up/Drop-In sessions. Excludes instructional programs and league play.

# Current Schedule

July 29 - August 4, 2024						
MONDAY	TUESDAY	WEDNESDAY	THURSDAY	FRIDAY	SATURDAY	SUNDAY
<b>AVAILABLE FOR RENTAL</b>						
<b>OPEN PLAY</b> 12-5:30PM BASKETBALL VOLLEYBALL FUTSAL PICKLEBALL	<b>OPEN PLAY</b> 12-5:30PM BASKETBALL VOLLEYBALL FUTSAL PICKLEBALL	<b>OPEN PLAY</b> 12-5:30PM BASKETBALL VOLLEYBALL FUTSAL PICKLEBALL	<b>OPEN PLAY</b> 12-2PM BASKETBALL /VOLLEYBALL FUTSAL / PICKLEBALL		<b>OPEN PLAY 12-8PM</b>	<b>OPEN PLAY</b> 12-5PM BASKETBALL VOLLEYBALL FUTSAL
			<b>OPEN PLAY</b> 12-2PM BASKETBALL VOLLEYBALL FUTSAL PICKLEBALL	<b>YOUTH BASKETBALL LESSONS</b> 2-6PM		
<b>ADULT ARENA SOCCER PICK-UP</b> 6-8:30PM	<b>ADULT PICKLEBALL PICK-UP</b> 6-8:30PM	<b>ADULT VOLLEYBALL PICK-UP</b> 6-8:30PM	<b>ADULT PICKLEBALL PICK-UP</b> 6-8:30PM	<b>ADULT BASKETBALL PICK-UP</b> 6-8:30PM	<b>ADULT BASKETBALL PICK-UP</b> 6-8:00PM	<b>ADULT ARENA SOCCER PICK-UP</b> 6-8:30PM

# Youth Basketball:



- 4-week program / Tuesday afternoons
- Grades TK-5<sup>th</sup> / 25 participants

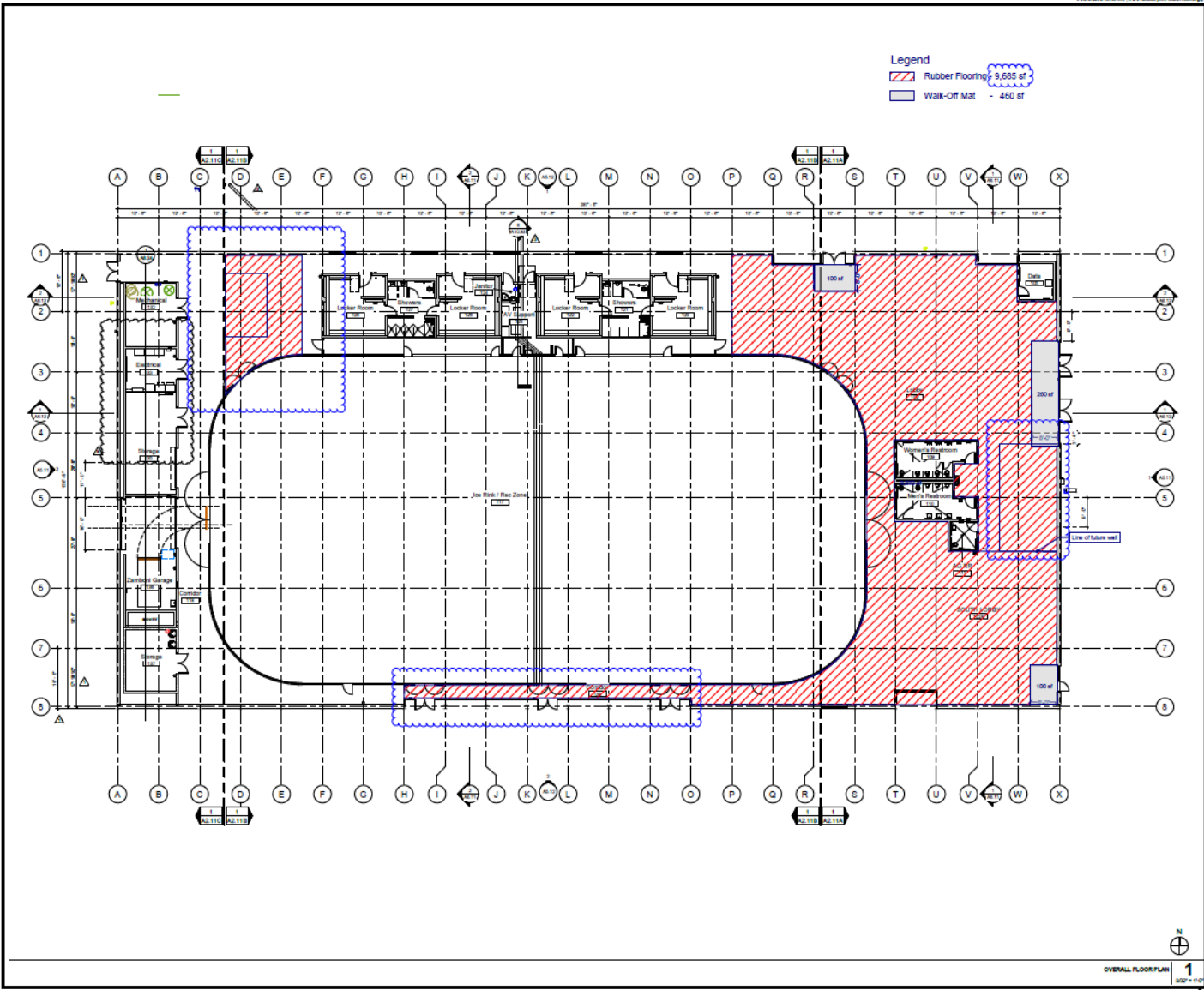


# Upcoming Programming

- Drop-in Adult Indoor Cricket - Mondays from 5:00pm-6:30pm
- Drop-in Youth Street Hockey - TBD
- Mammoth Lakes Youth Hockey Dryland Training sessions - TBD

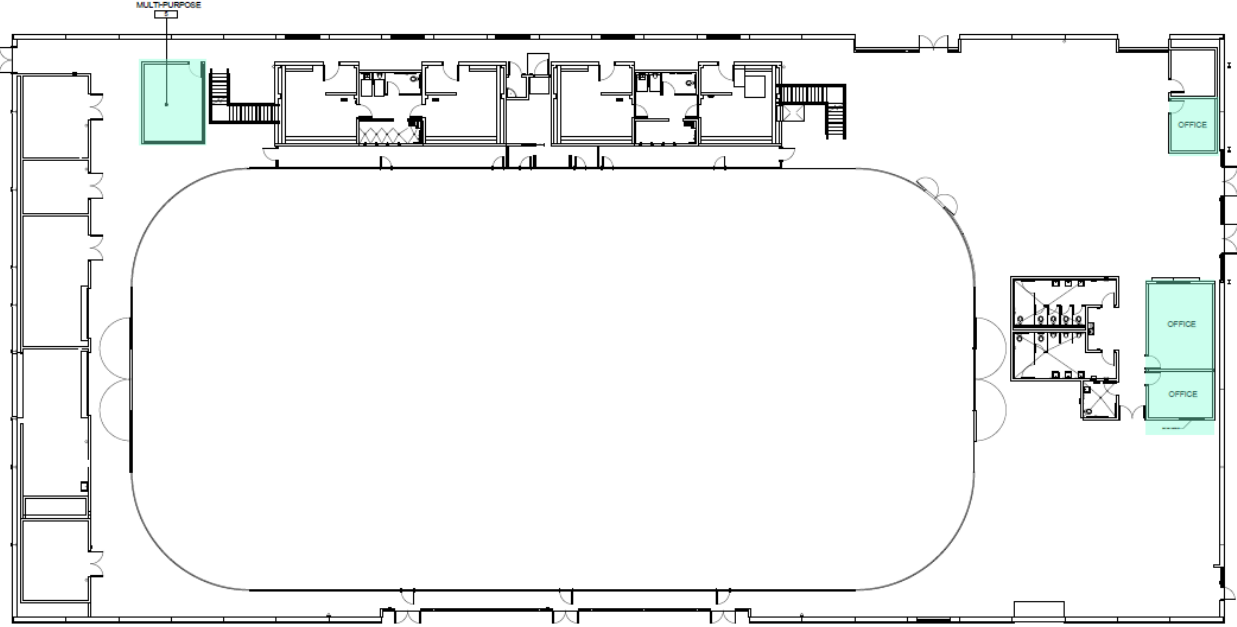


# Upcoming Projects

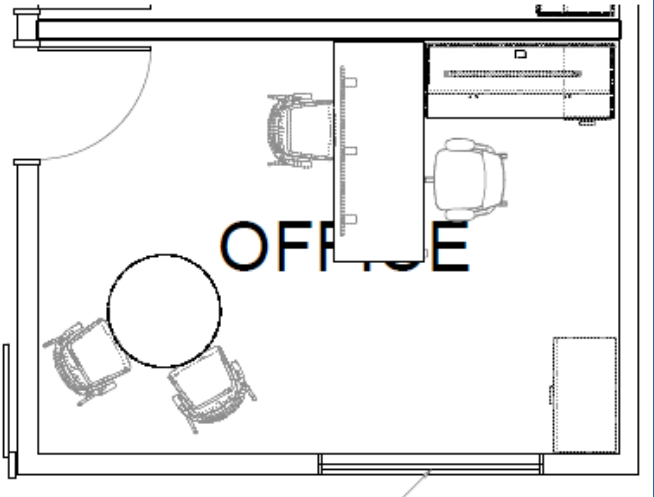
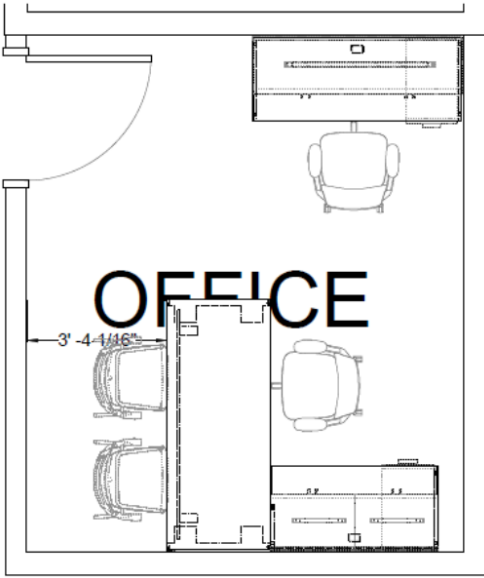


Rubber flooring installation to begin Monday, August 5.

# Upcoming Projects



Offices and multi-purpose room installation to commence early October.







# Winter Operations

- ▶ **September 8-20:**
- ▶ Sports Court Removal/ice rink preparation
- ▶ **September 20-25:**
- ▶ Lower ice rink slab temperature
- ▶ **September 25 - October 4:**
  - ▶ Ice Making
- ▶ **October 5:**
- ▶ Opening Day

# Mammoth Creek Park Site Plan





## New Grass/Turf Areas

- ▶ New turf has been installed in the Open Play area and will be open to the public in mid-August. We ask that the public please respect the current closure to allow the turf time to root.
- ▶ Synthetic turf is scheduled to be installed in the cornhole area (adjacent to the playground) beginning August 12.

# Climbing Boulder

Custom pre-fabricated boulder with 1,117 SF of climbing surface, similar to the image below.

