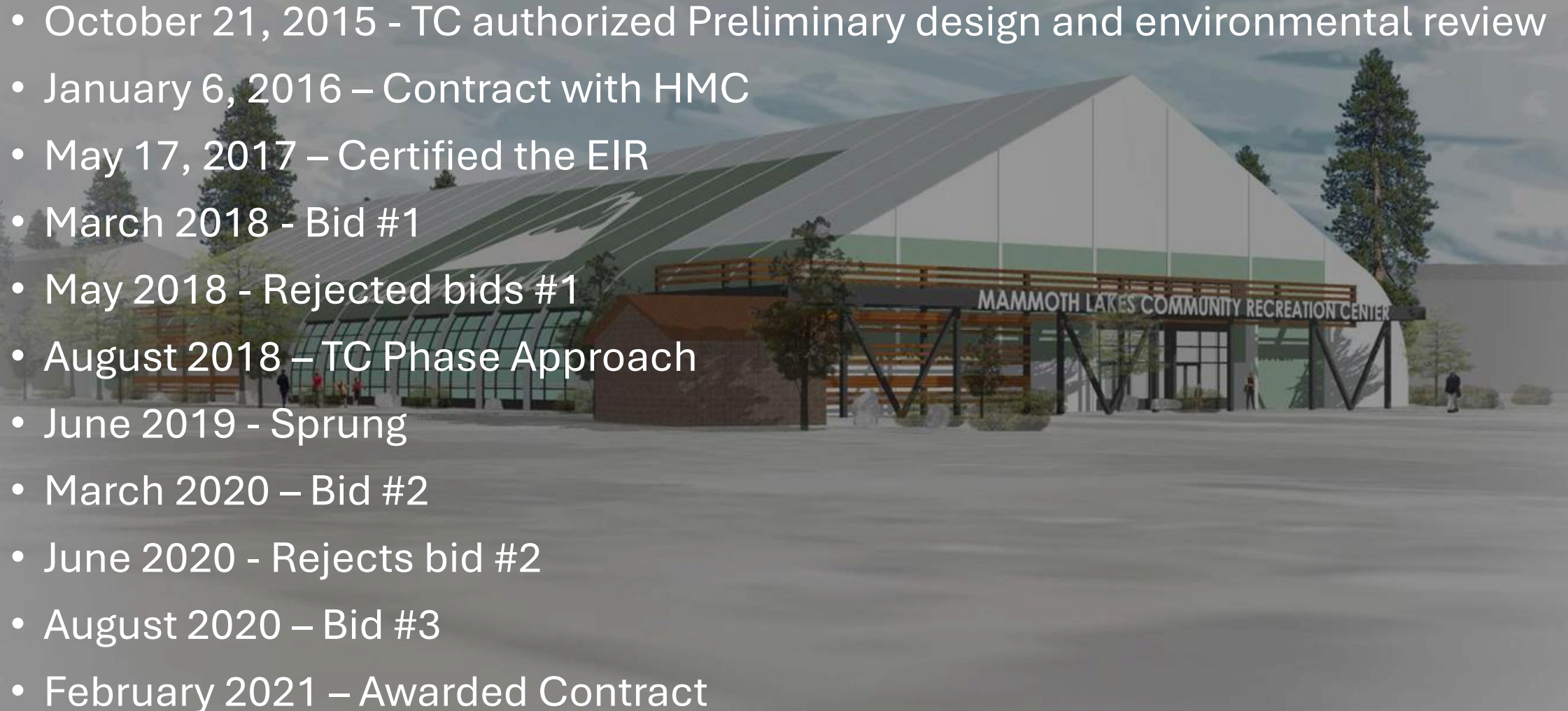


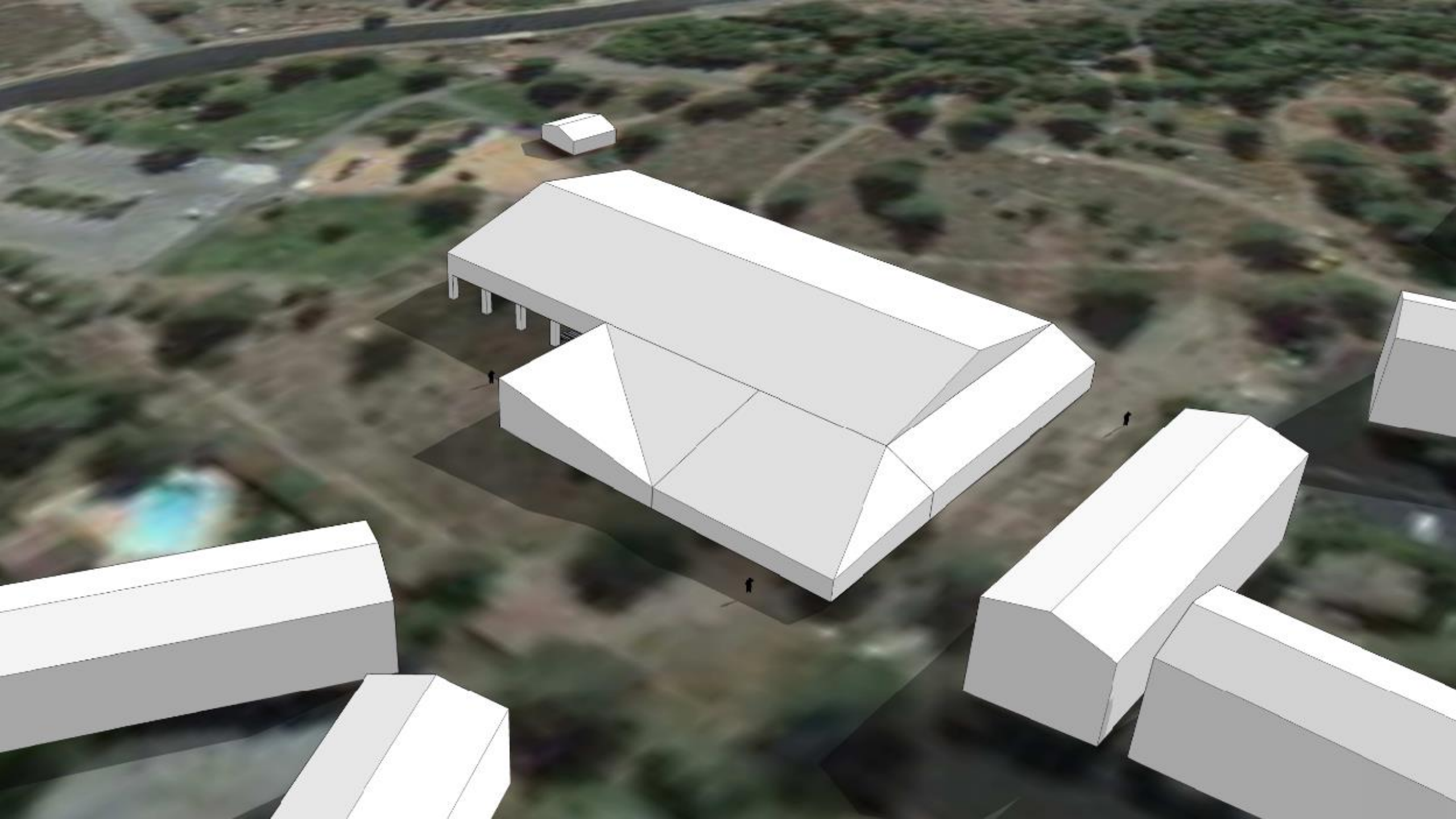
A wide-angle photograph of a construction site during the CRC Closeout phase. The foreground is dominated by a large, flat area covered with light-colored wooden formwork panels. In the middle ground, several workers in orange safety vests are visible, some standing near concrete blocks. Two large blue Genie boom lifts are positioned on the site, with their long, telescopic arms extended upwards. One lift has a worker in a basket at its peak. To the right, a white Genie boom lift is also visible. In the background, a multi-story residential building is under construction, and a snow-capped mountain rises behind a line of trees under a clear blue sky. The text "CRC Closeout" is overlaid in the center of the image in a large, white, sans-serif font.

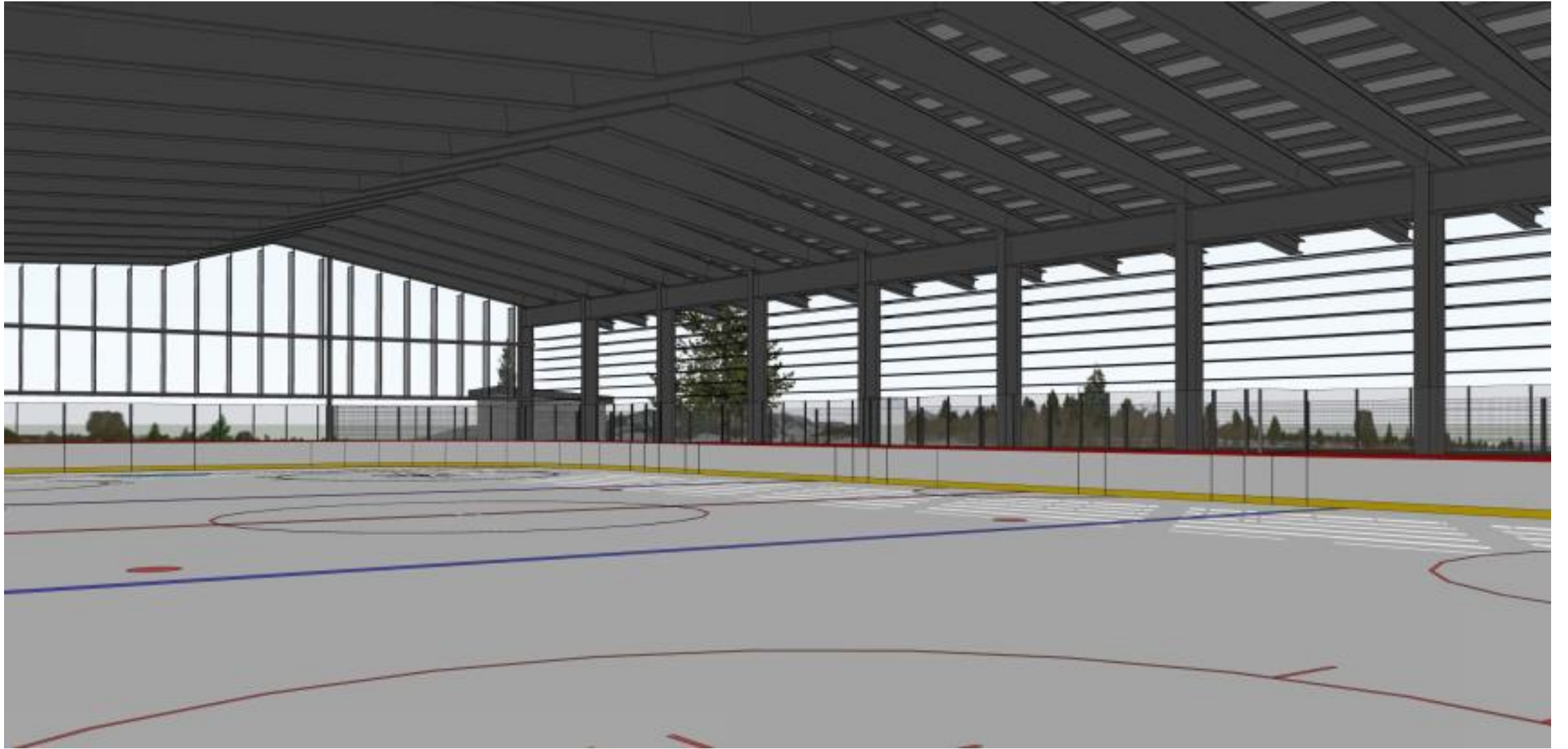
CRC Closeout

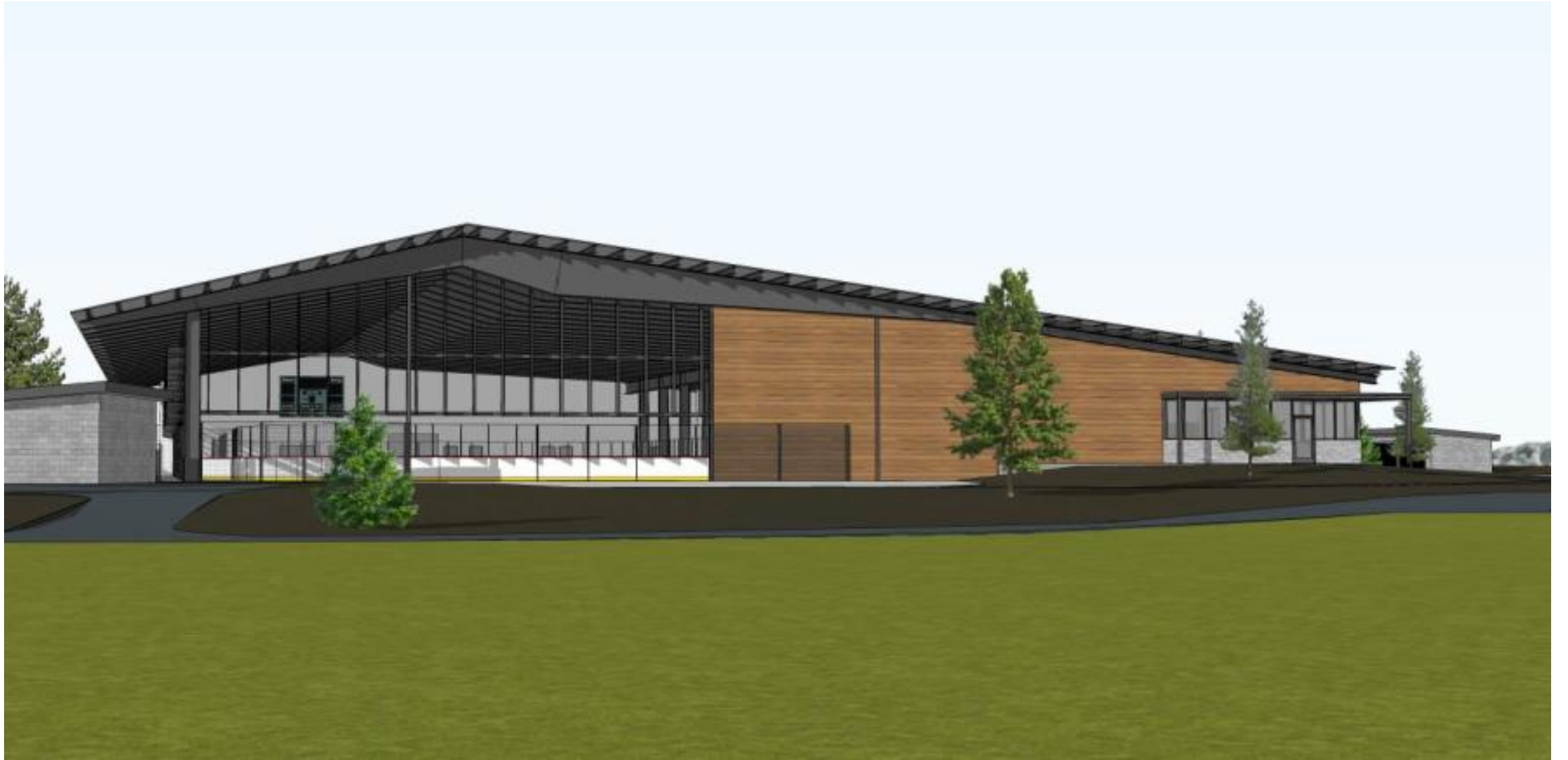
CRC Background

- October 21, 2015 - TC authorized Preliminary design and environmental review
 - January 6, 2016 – Contract with HMC
 - May 17, 2017 – Certified the EIR
 - March 2018 - Bid #1
 - May 2018 - Rejected bids #1
 - August 2018 – TC Phase Approach
 - June 2019 - Sprung
 - March 2020 – Bid #2
 - June 2020 - Rejects bid #2
 - August 2020 – Bid #3
 - February 2021 – Awarded Contract
- 
- An architectural rendering of the Mammoth Lakes Community Recreation Center. The building is a large, modern structure with a prominent gabled roof. The facade is primarily white with green accents. A dark horizontal band across the front features the text "MAMMOTH LAKES COMMUNITY RECREATION CENTER" in white capital letters. The building has large glass windows and doors, and is surrounded by a paved area with some landscaping, including trees and small shrubs. The background shows a hazy, mountainous landscape under a cloudy sky.













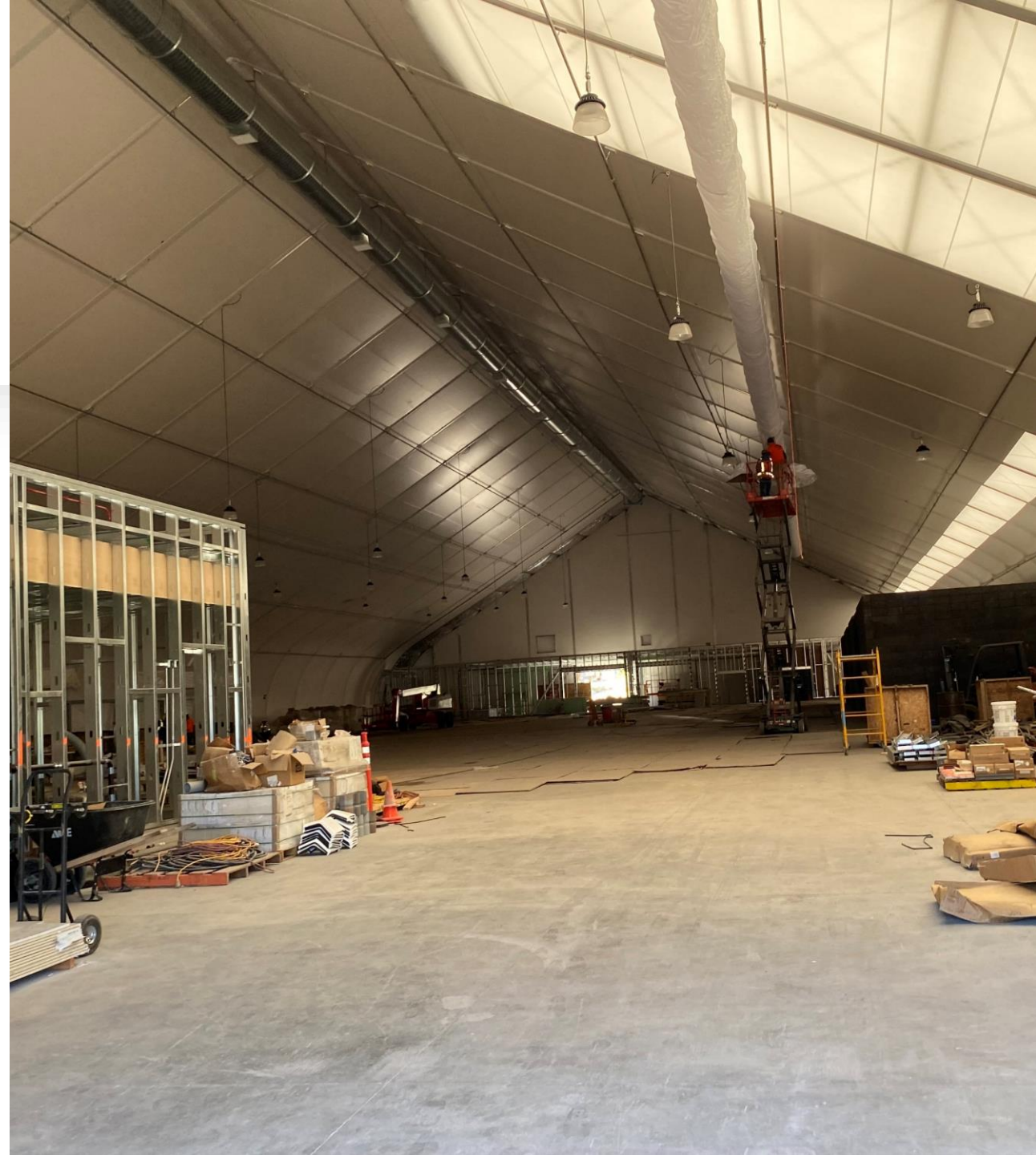


TOWN OF MAMMOTH LAKES COMMUNITY RECREATION CENTER



CRC Phase 1

- 40,385 SF
- Olympic Ice Rink
- Mechanical Enclosure / Systems
- 4 Locker Rooms / Showers
- Public Restrooms
- Storage
- Exterior Patio Area
- Parking Lot / transit shelter / EV Charging – Mobility Hub



CRC Phase 1

- Eliminated from bid#2
 - Mezzanine Viewing
 - Concessions
 - Office Space
 - Elevated Bleachers
 - Exterior Sign
 - Community Room
 - Mobility Hub
 - Other Value Engineering

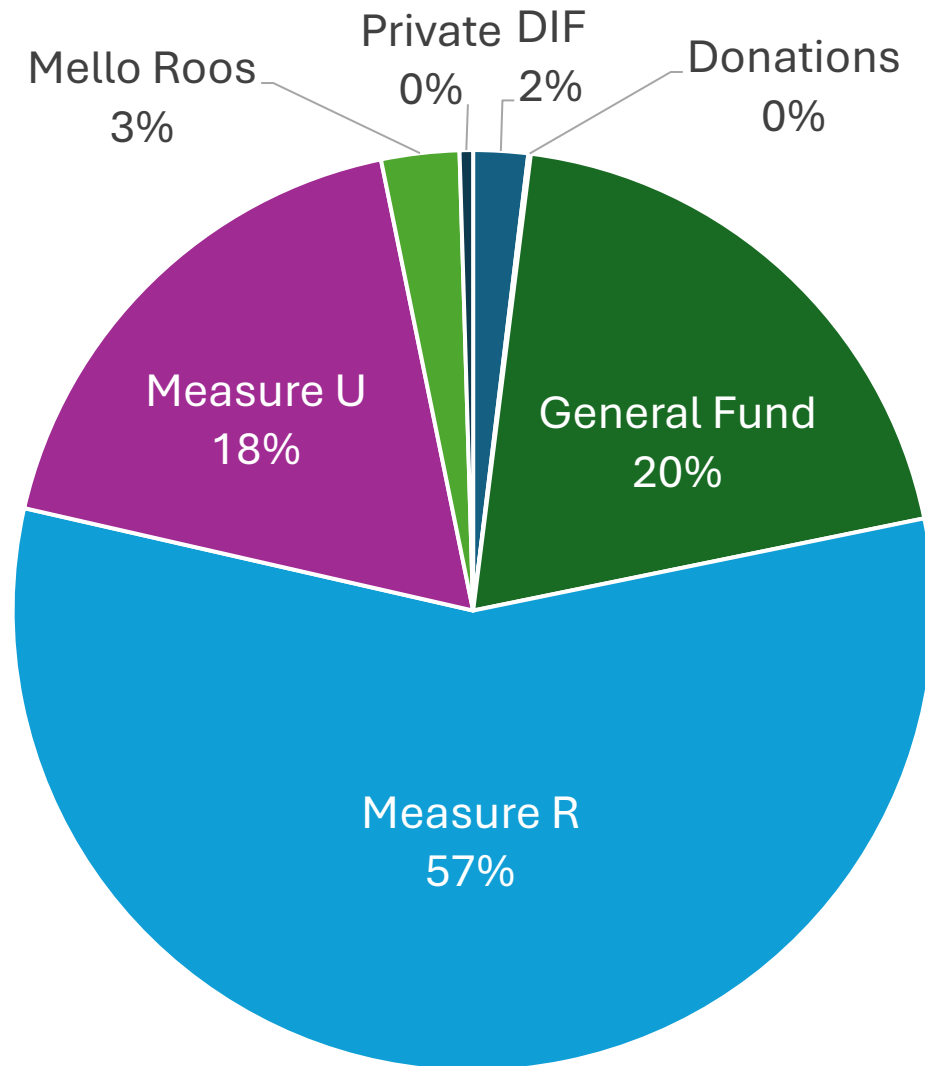


CRC Background



- April 2021 - Construction started
- Fall 2021 – Slab completed
- Spring 2022 – Sprung installation began
- Fall of 2022 – Interior work
- January 2023 – Contract completion date
- Summer 2023 – Interior work continued
- November 2023 – Started making ice
- November 25, 2023 – Opening Day “Ice Friday “
- January 2024 – NOC excepting punch list

Funding – Phase 1 + Mobility Hub



DIF	\$	325,000.00
Donations	\$	14,821.25
General Fund	\$	3,355,640.00
Measure R	\$	9,630,000.00
Measure U	\$	3,090,000.00
Mello Roos	\$	464,401.43
Private	\$	80,000.00
Total	\$	16,959,862.68

Phase 1 Financials

Major Costs:

• Hamel Construction Contract	\$10,919,517.21 (inc. settlement)
• Sprung	\$2,977,087.40
• Trane	\$171,215.82
• Triad Engineering	\$216,134.90
• Michael Baker	\$189,325.67
• HMC Architects	\$1,751,762
• BBK	\$113,639.19
• Cardno	\$43,056.32
• Rink Systems	\$158,409.38
• Gametime	\$13,705.52
• Daktronics Inc	\$40,144.17



Phase 1 Financials

- Funding \$16,959,862
- Costs since 2015 - \$16,123,714
- Remaining Contract + Retention - \$1,791,526
- Settlement – \$800,000 Contract Deduction
- Closeout Budget - \$17,115,240
- Gap - \$155,378
- Remaining work – approx. \$150,000 (Bid under Phase 2)
- Gap \$305k – Final \$17,265,240



Recommendation

- Authorize the Town Manager to execute a settlement agreement with Hamel Construction
- Authorize the Town Manager to use Capital Reserves to Closeout current phases of the CRC

Opening Celebration of the Community Recreation Center (CRC)

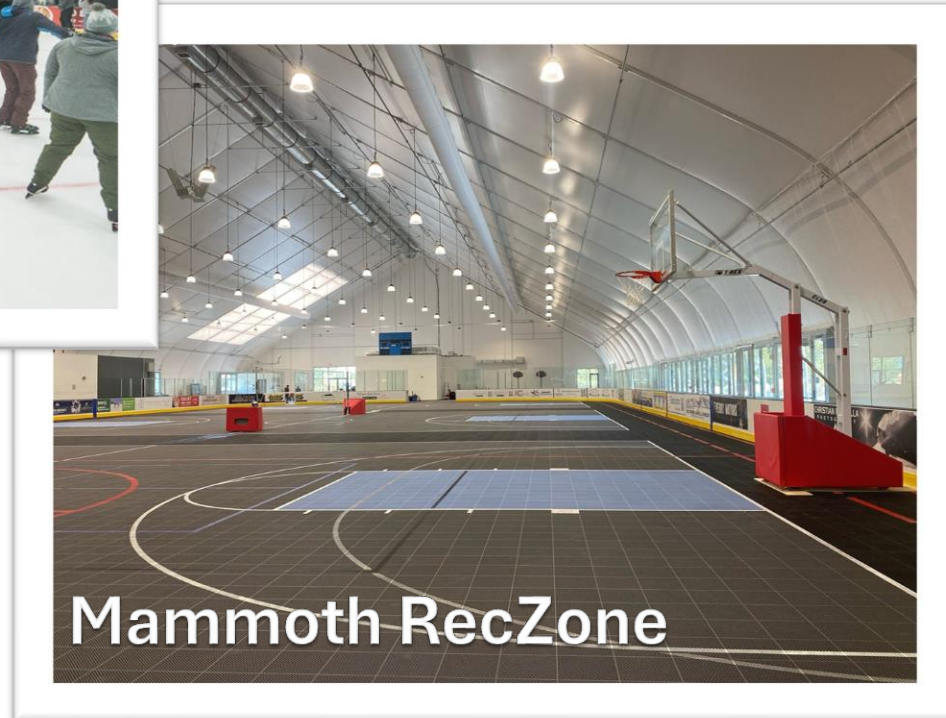


“ICE” Friday, November 24, 2023

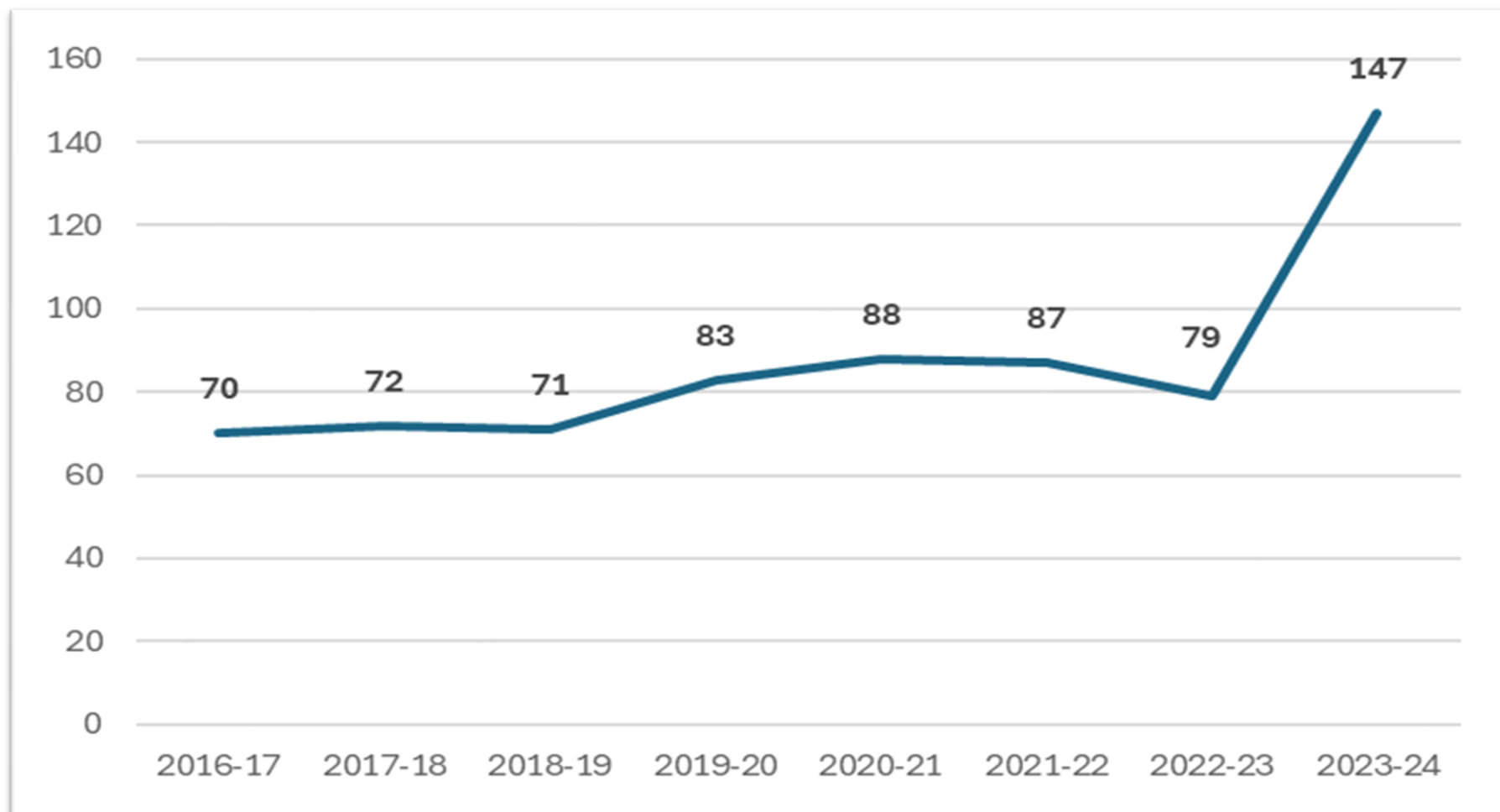
A game changer for community recreation!



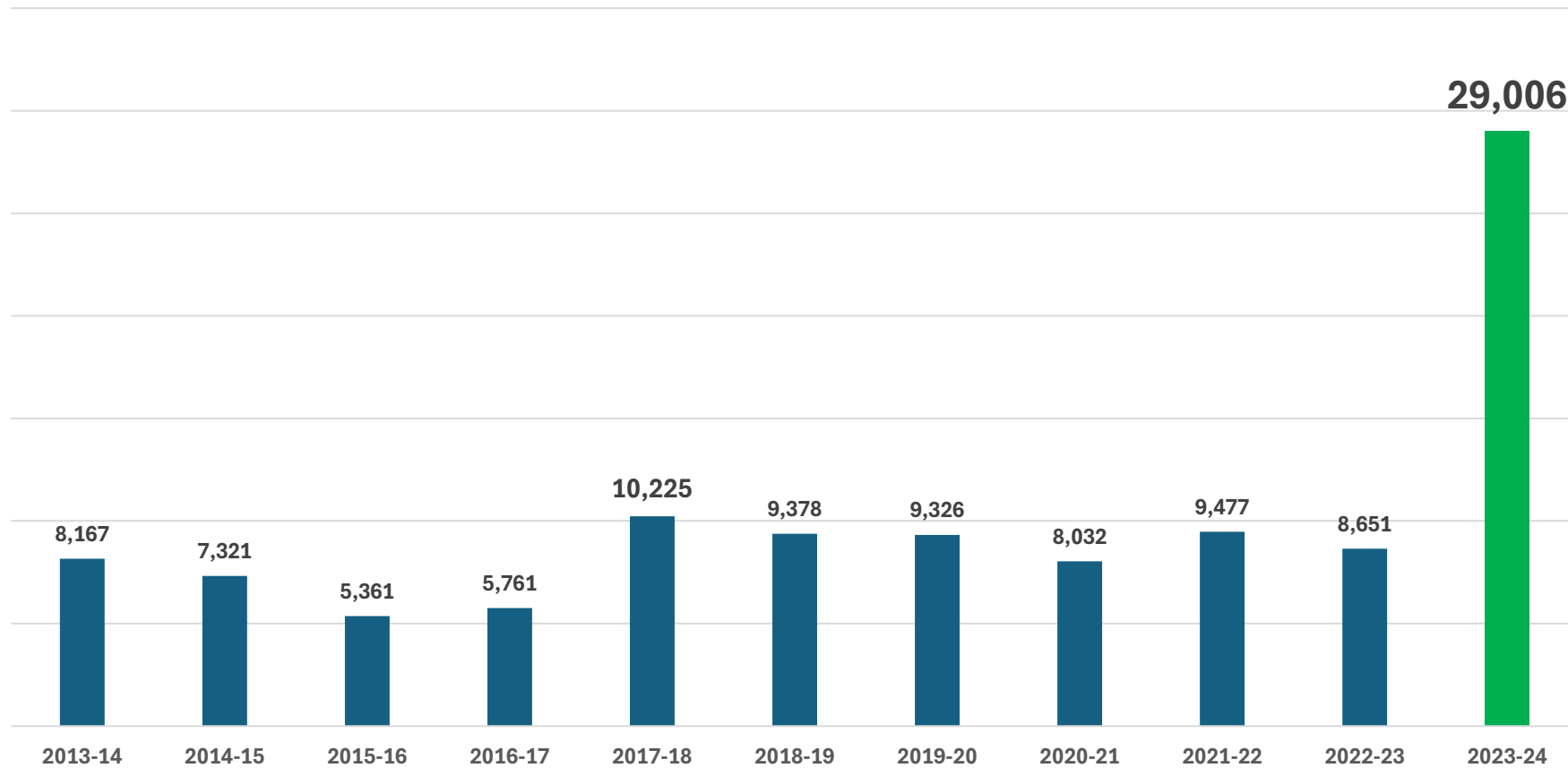
After almost a year of operations, the CRC has seen 35,000 visits from all ages and officially opens to the public tomorrow (10/3) for its first full season of operations.



Winter Operating Days

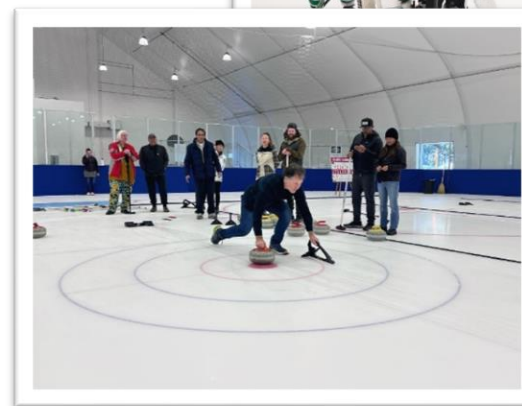
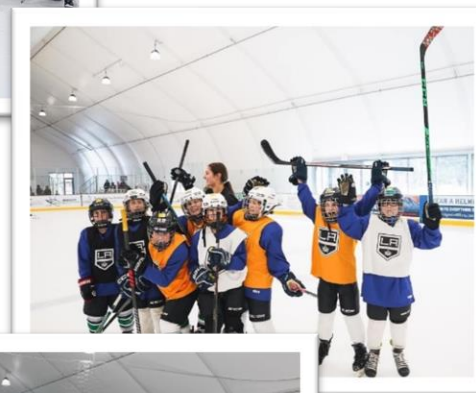


Winter Visits Comparison

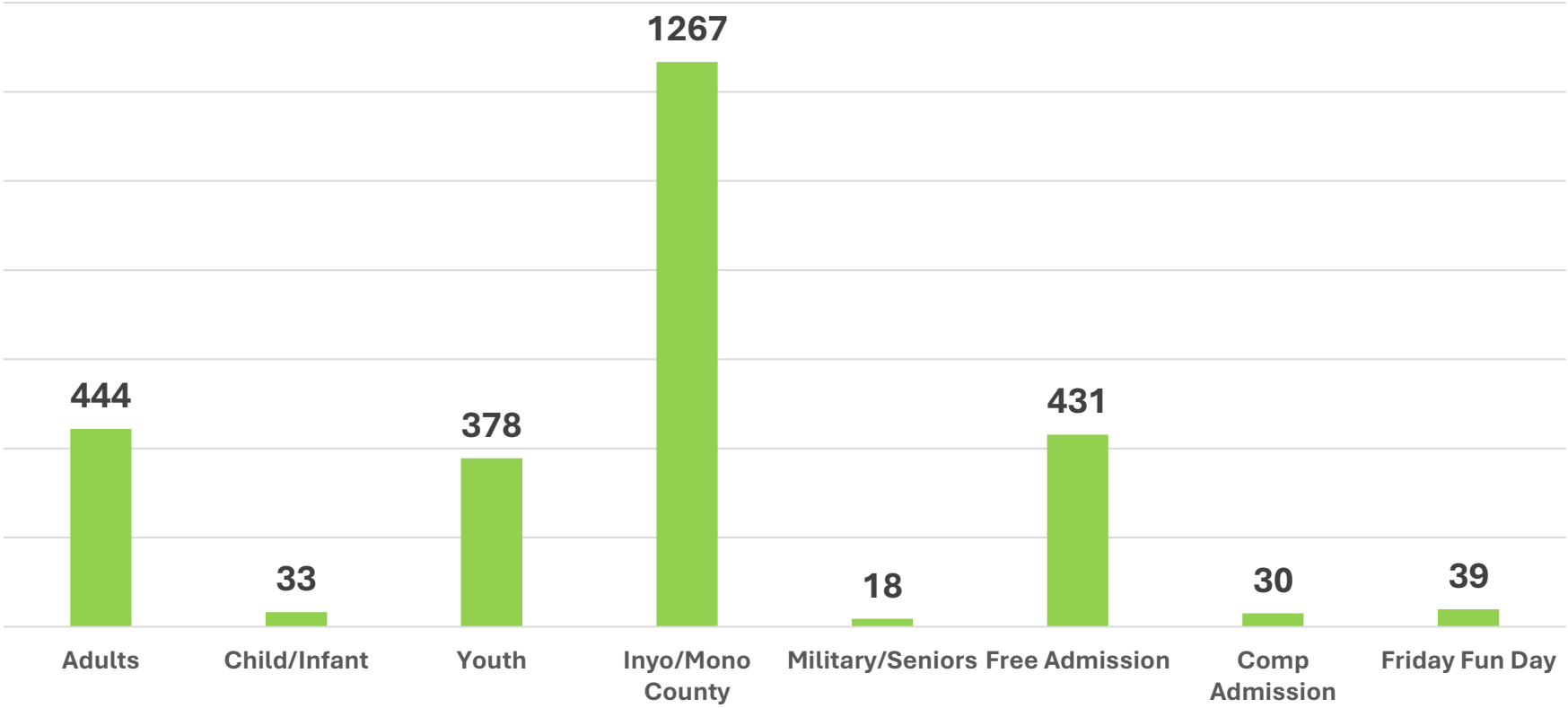


Winter Programs by the numbers...

- **Adult Hockey**
 - 109 Adult League players
- **Women's Hockey Program**
 - 95 participants
- **Youth Hockey**
 - 125 players
 - LA Kings 'First Goal' Program
 - LA Kings Development Camp
- **Skating Lessons**
 - 126 (76 in 2022/23)
- **Curling**
 - 13 teams (sold out)
 - 84 people learnt to curl
 - Hosted CA Curling Championships



Summer Visitation



Approximately 3,050 visitors

Summer Adult Programs

- Drop-in Soccer
- Drop-in Cricket
- Drop-in Pickleball
- Drop-in Volleyball
- Drop-in Basketball



Summer Youth Programs



- Summer Basketball Program
- Back To School Basketball Program
- MLYH Tryouts and Dryland Practice

Special Events – Town’s 40th Anniversary





2024/25 WINTER OPERATIONS

Los Angeles Kings ICE MAMMOTH LAKES

WINTER EXPO

EXPO DE INVIERNO
THURSDAY • OCT 3
JUEVES 3 DE OCTUBRE 5-8PM

WINTER SKATE Membership
LA KINGS ICE RINK
AVAILABLE 10/3

Fall Season Special
Enjoy a limited-time, 50% off Winter Skate Membership discount from Oct. 3-31
Disfruta de un descuento del 50% en la Membresía de Winter Skate por tiempo limitado, del 3 al 31 de octubre

- ➔ **FREE Public Skate** from 5-8pm
Including admission and rentals – subject to availability
Patínaje público GRATUITO, incluye entrada y alquiler – sujeto a disponibilidad
- ➔ **Information** on local winter recreation opportunities
Including gymnastics, basketball, cooking and ice sports
Información sobre actividades recreativas de invierno, incluyendo gimnasia, baloncesto, cocina y deportes de hielo.
- ➔ **In-Person Registration** for winter recreation programs
In-person registration limited to one product per child
Online registration opens October 7
Inscripción presencial para programas de invierno. La inscripción presencial está limitada a un producto por niño. La inscripción en línea abre el 7 de octubre
- ➔ **Lucky Door Prizes** include a Winter Skate Membership, an Ice Skating Party for 20, and LA Kings game tickets
Los premios incluyen una Membresía a Winter Skate, una fiesta de patínaje sobre hielo para 20 personas y entradas para un partido de los LA Kings

Parks & Recreation

686 Old Mammoth Rd. — LAKingsIceMammothLakes.com
760-965-3695 — [f](https://www.facebook.com/LAKingsIceMammothLakes) [@LAKingsIceMammothLakes](https://www.instagram.com/LAKingsIceMammothLakes)

Opening Day

- *Thursday, October 3, 2024*

Closing Day

- *Sunday, April 20, 2025*

Mammoth RecZone Opening Day

- *Saturday, May 10, 2025*

Regular Programing:

- OPEN from 12:00pm daily
- Available for ice rentals from 6:00am-11:30am

Holiday Programing: (Dec. 21 – Jan. 4, Jan. 18-19, Feb. 15-16)

- Public Skate: OPEN from 12:00pm-9:30pm daily
- Available for ice rentals from 6:00am-11:30am

Special Student Rate

- All Mono/Inyo County students receive admission/ skate rental for \$5.00.

Mid-Week Lunchtime Skate

- Skate for only \$9.00 Monday through Thursday, non-holiday.

Community Night!

- Wednesday night is community night with FREE public skate every first Wednesday of the month.

NEW Winter Play Pass

- \$120 x 10 use Adult Winter Play Pass (\$200 value) – good for hockey pick-up, stick-time, drop-in, curling and more!

50% OFF WINTER SKATE MEMBERSHIP

2024/25 Season: October 3 – April 20

Winter Skate Membership	Excluding Rentals	Including Rentals
Adult (18+)	\$180 \$90	\$270 \$135
Senior/Military/College	\$150 \$75	\$240 \$120
Youth (5-17)	\$135 \$67.50	\$225 \$112.50
Inyo/Mono Student	\$60 \$30	\$60 \$30
Child (4 & under)	\$60 \$30	\$60 \$30

Get unlimited access to public skate sessions all season long with your Winter Skate Membership! Enjoy 50% off for a limited time, October 3-31, in-person purchases only.

TONY COLASARDO SCHOLARSHIP FUND Tony Colasardo Scholarships Available

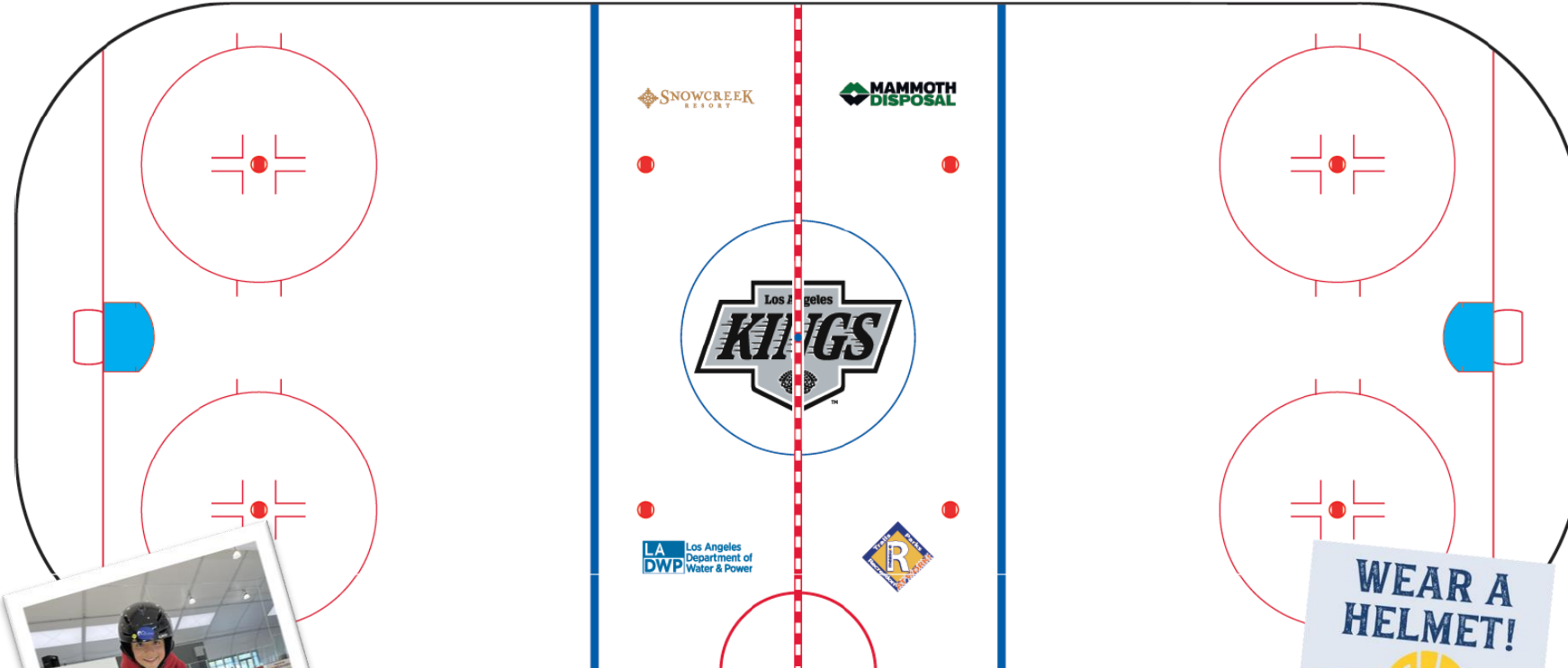
For schedule and session times, visit:
 686 Old Mammoth Rd. — LAKingsIceMammothLakes.com
 760-965-3695 — [f](https://www.facebook.com/LAKingsIceMammothLakes) [i](https://www.instagram.com/LAKingsIceMammothLakes) [T](https://www.tiktok.com/@LAKingsIceMammothLakes) [Y](https://www.youtube.com/LAKingsIceMammothLakes)

Community Events

- **Opening Night/Winter Expo – October 3, 2024**
- **Little Kings Program – October 8-24, 2024**
- **Haunted Rink – October 25, 2024**
- **Community Tree Lighting Ceremony – December 6, 2024**
- **Skate with Santa – December 18, 2024**
- **USFS National Skating Month – January 2025**
- **Winter Classic Hockey Tournament – TBD**
- **LA Kings Mammoth Lakes Hockey Development Camp – TBD**
- **Curling Clinic and Match Play – TBD**



Sponsorship Programs



BUY A BOARD



Planned Programming & Facility Enhancements*

• On ice

- New Fall Hockey League
- New Fall Lesson program
- New Winter Play Pass!
- New Regular / Holiday rates
- Women's Learn To Play Hockey Clinic and Leagues
- Fall, Winter and Spring 6-week skating lessons
- Regional Figure skating competition
- Broomball
- Community Night!

Off ice

- 10,000 SF of rubber flooring
- Capybara Food Truck (year-round)
- Elevated seating for 243 + 5 ADA spaces*
- Staff offices, locker and meeting spaces
- Staff furniture for workspaces
- New north lobby counters
- Ice rink safety netting*
- Indoor Pickleball Court
- Pop-up Wave Rave Skate Park
- Half Court Basketball
- Arcade hockey and foosball (Table soccer)
- Enhanced vending machines with healthier food and drink options

*Subject to Town Council Award