



**2024 End of
Season
Trail
Counter
Report
12/13/2024**

Methodology

There are two types of counters that are deployed and regularly maintained, infrared and vehicle counters.

- **Infrared counters** are used to count individuals.
 - Infrared counters that are stationed at the start of trailheads will likely include people passing going onto the trail and coming off.
 - While most locations operate smoothly without complications, occasionally counters are disrupted by weather, battery issues, and unfortunately human disturbances. A handful of locations are favorited by some individuals where they stuff the counter housing boxes which prevents the sensor from working.
- **Vehicle counters** are used to count vehicles.
 - There are 2 vehicle counters deployed, one at the entrance to Shady Rest Park and the other at the start of the Sherwin's Meadow Parking Lot.
 - These are set with a radius to hopefully only catch one side of the road, although Shady Rest Park counter's radius might catch both directions.

History

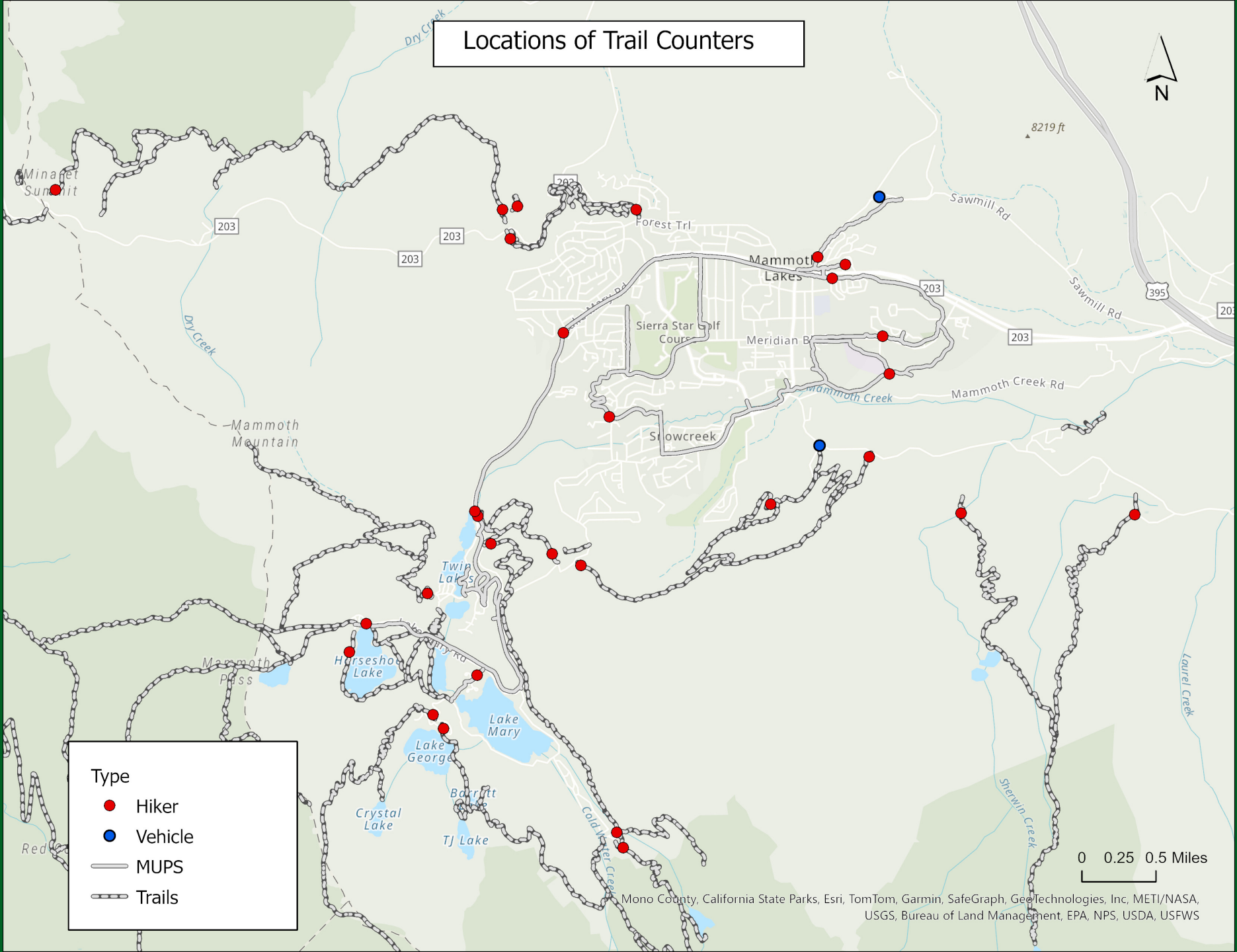
The trail counter program was initiated by MLTPA in 2012.

Since 2017, roughly 30 infrared TRAFx trail counters are installed each summer at various trailheads and along Multi Use Pathways throughout the Town of Mammoth Lakes.

Summer 2024 was my first full summer season in charge of deploying, maintaining, and collecting the data that these trail counters collect. I have prepared 5 years' worth of data to compare these sites.

- 2023 was not included as that summer's data was irregular due to very late snow melt and a transition of who was running this program.

Locations of Trail Counters



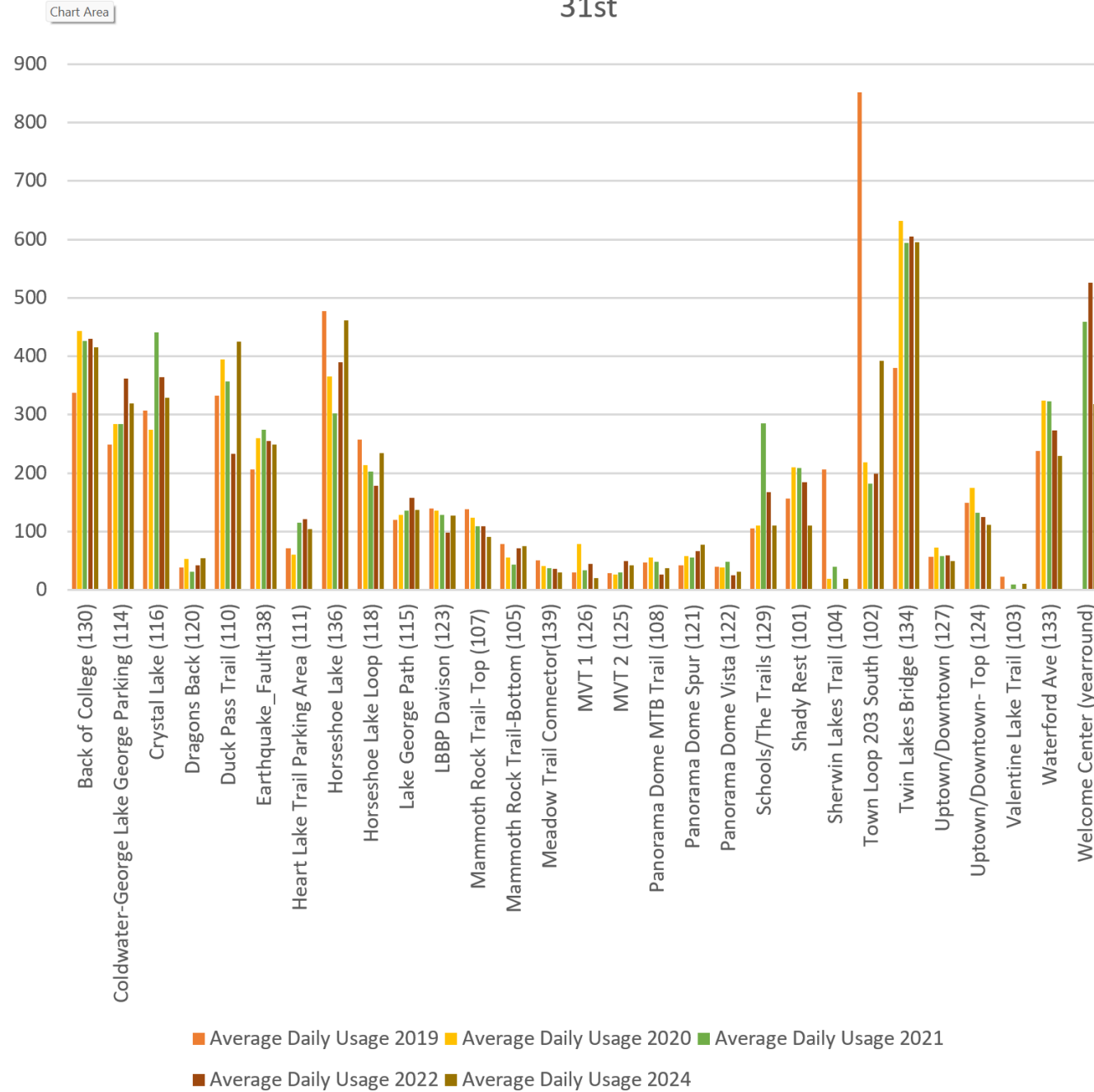
Type

- Hiker
- Vehicle
- MUPS
- - - Trails

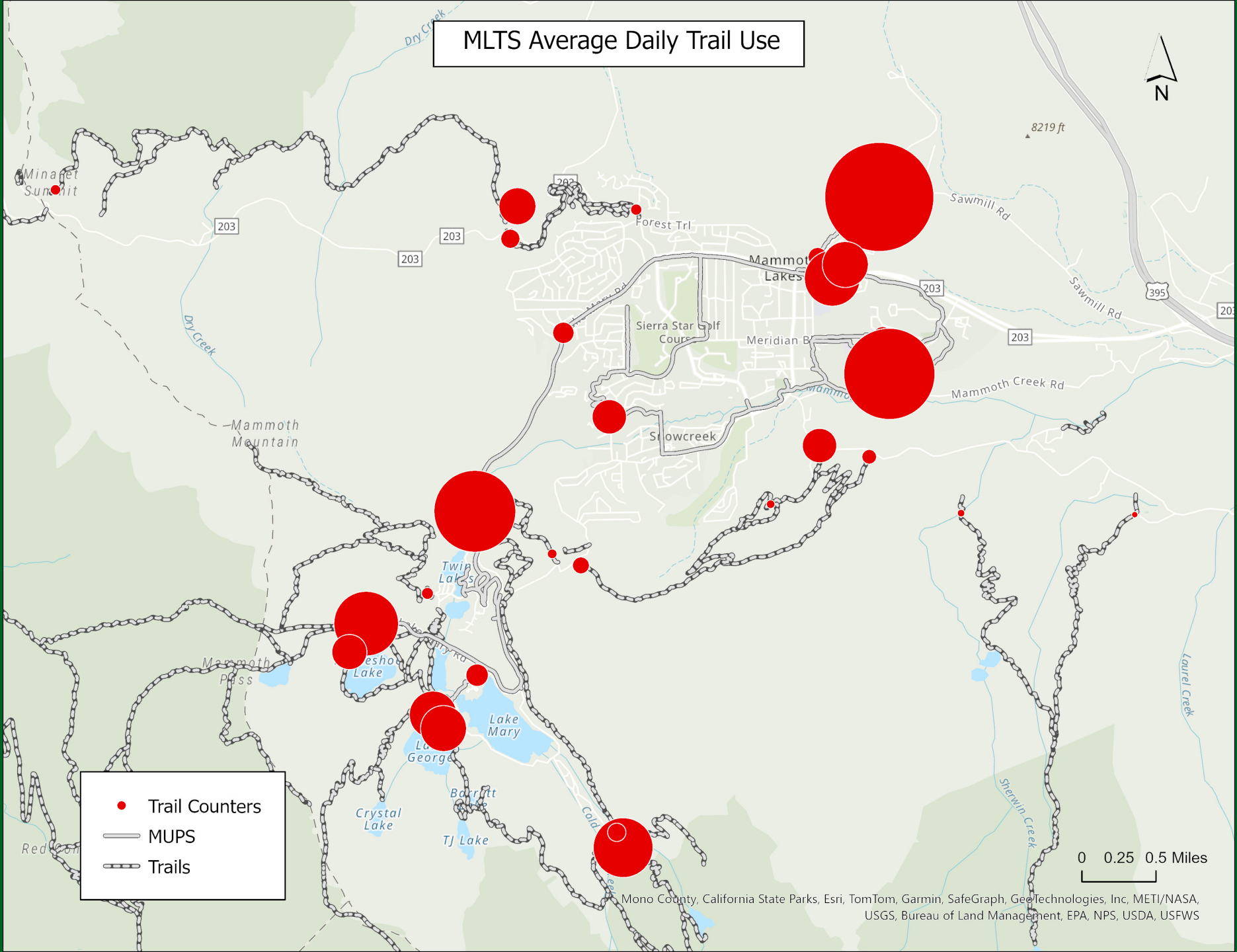
0 0.25 0.5 Miles

Mono County, California State Parks, Esri, TomTom, Garmin, SafeGraph, GeoTechnologies, Inc, METI/NASA, USGS, Bureau of Land Management, EPA, NPS, USDA, USFWS

Infared Counters Average Daily Usage from June 1st to October 31st



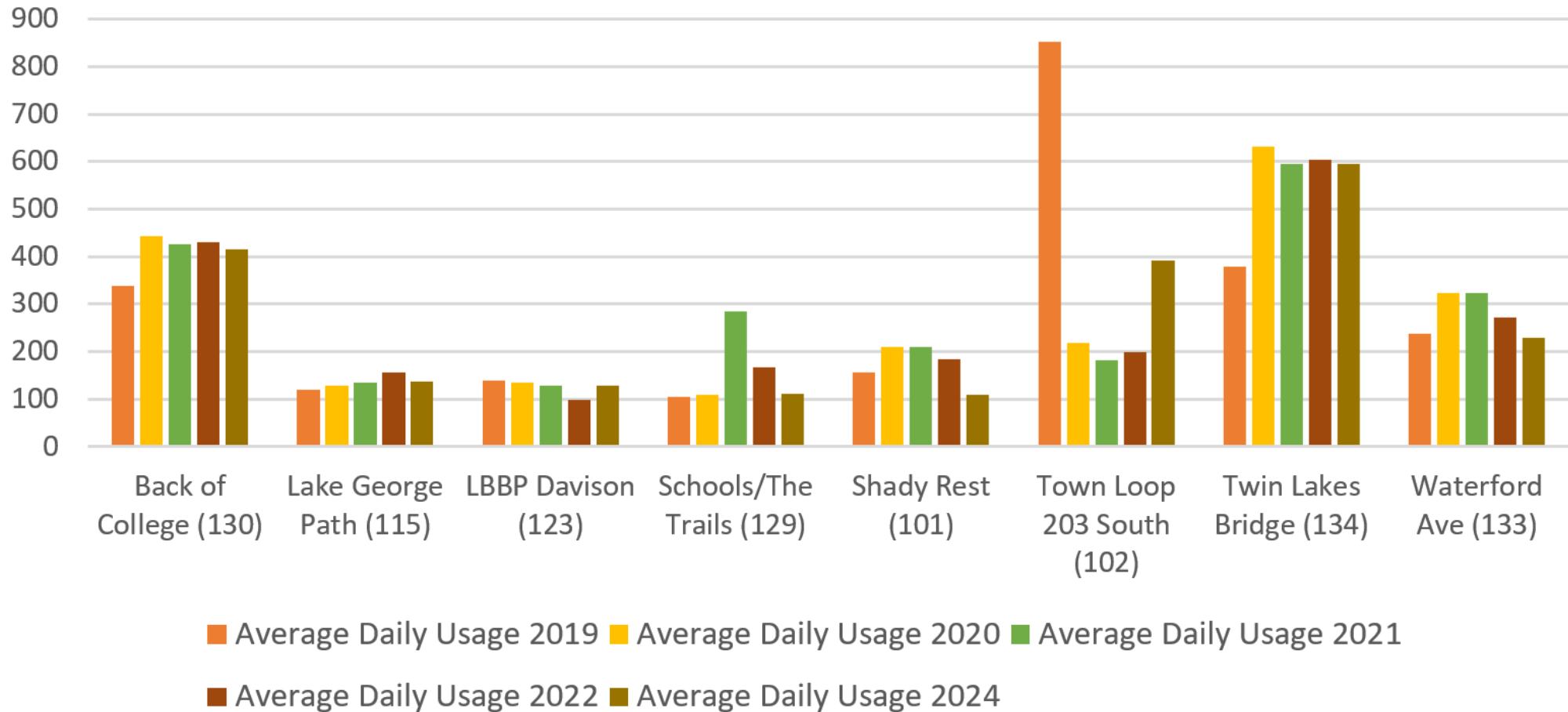
MLTS Average Daily Trail Use



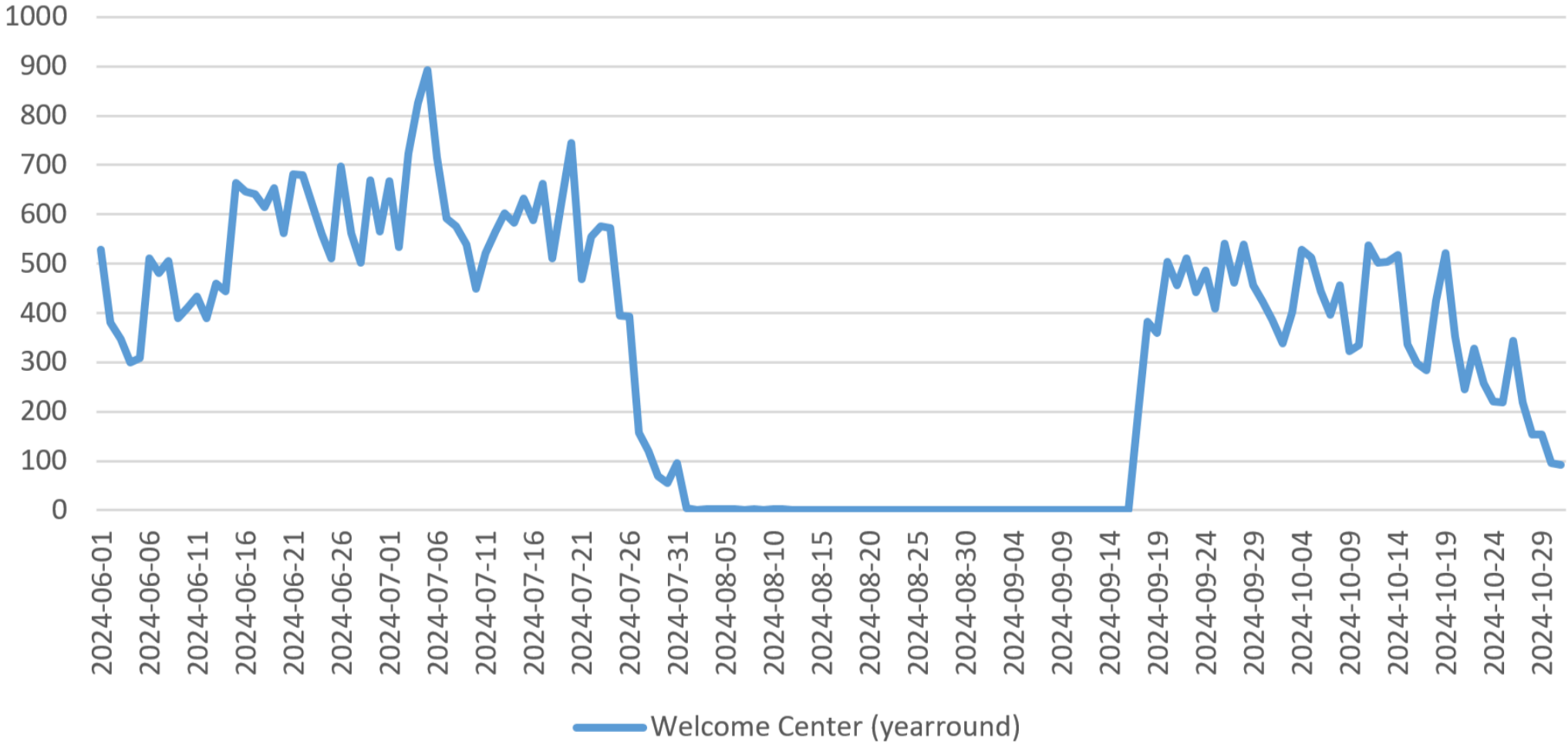
- Trail Counters
- MUPS
- - Trails

0 0.25 0.5 Miles

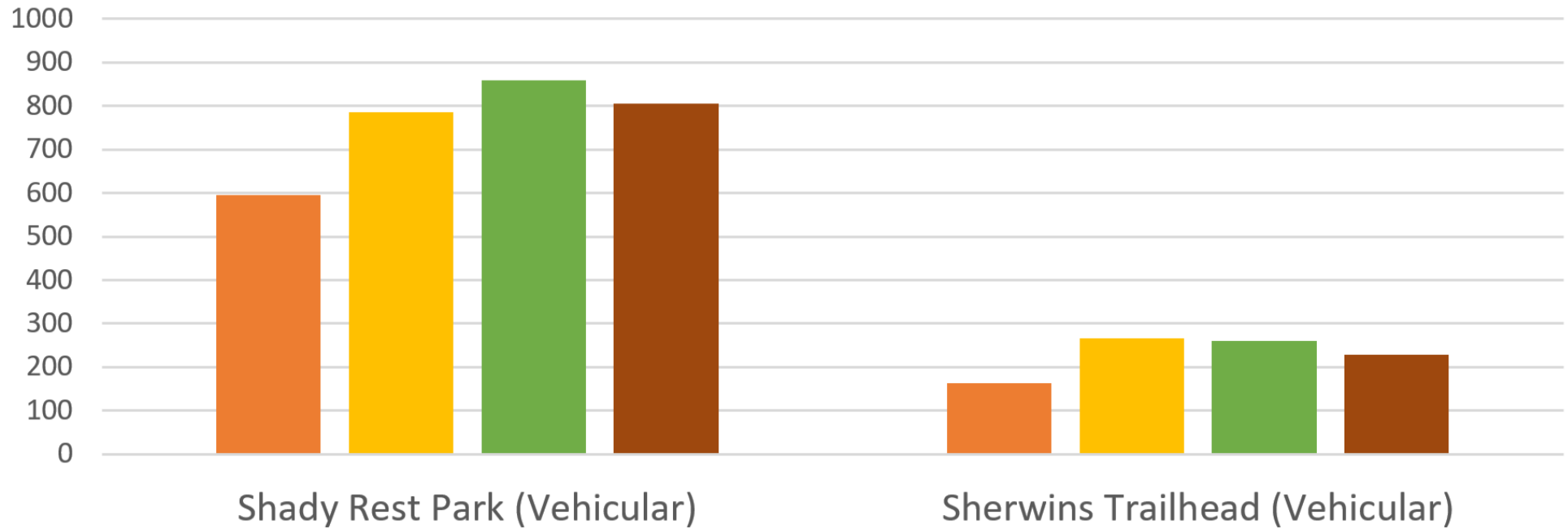
Infrared Counters Average Daily Usage from June 1st to October 31st (MUP Highlight)



Welcome Center Daily Traffic Summer 2024

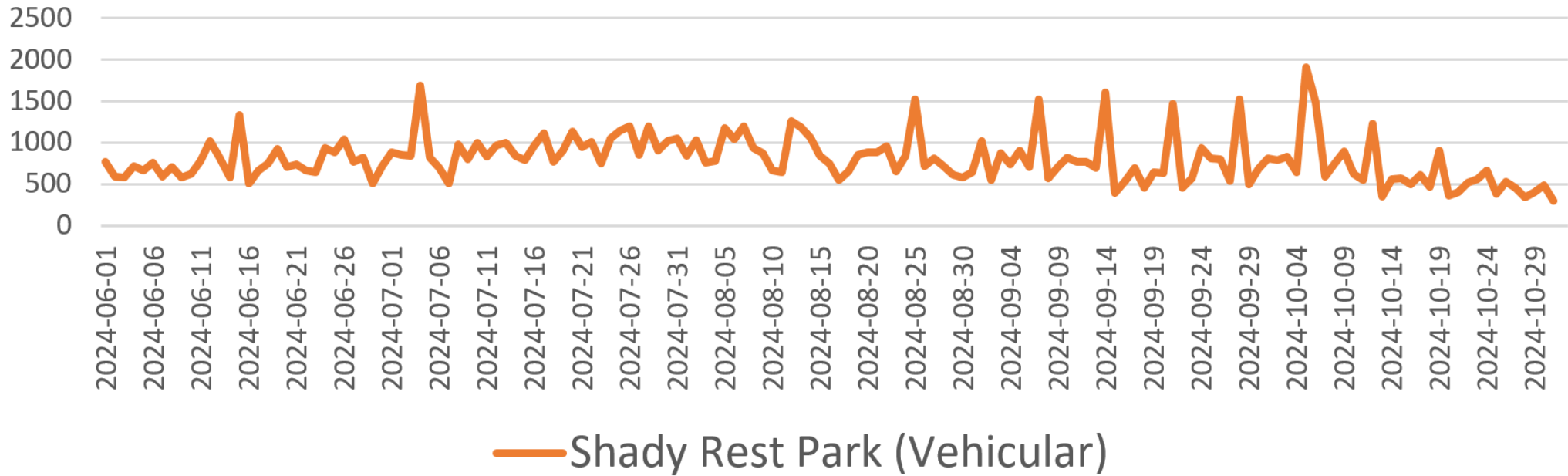


Vehicle Counters Average Daily Usage from June 1st to October 31st

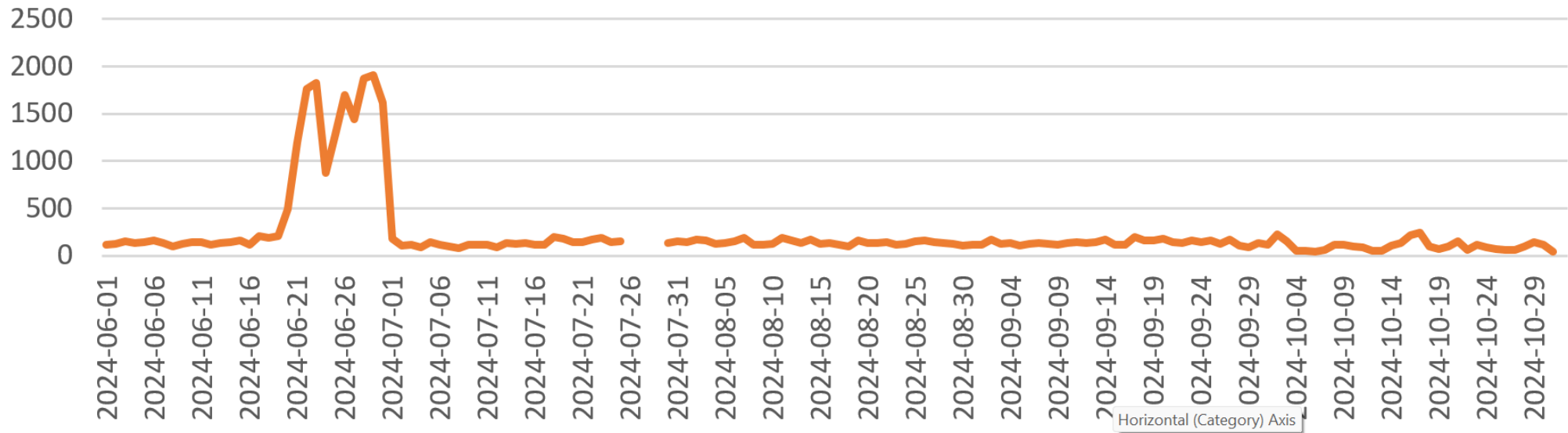


■ Average Daily Usage 2020 ■ Average Daily Usage 2021
■ Average Daily Usage 2022 ■ Average Daily Usage 2024

Shady Rest Park Vehicular Counter Daily Traffic June 1st to October 31st 2024



Sherwin Trailhead Parking Lot Daily Usage June 1st to October 31st 2024



— Sherwins Trailhead (Vehicular)

End of Season Summary

The 2024 Summer season was a very normal season after a very normal snow year. Nothing impacted the start of the trail counter program, so all sites were active at the start of June. There were thankfully no major fire events near us, so there was no smoke impact or forest closures on the trail system this season. Data showed continued high use at many of the popular sites and similar year over year usage at most of the sites. Some notable events, such as the Motocross, are evident in the counter data. The data shows that recreation has been fairly consistent the last couple of years post Covid. Some locations have seen some moderate growth in usage, while others have stayed largely constant.



Any
Questions?

