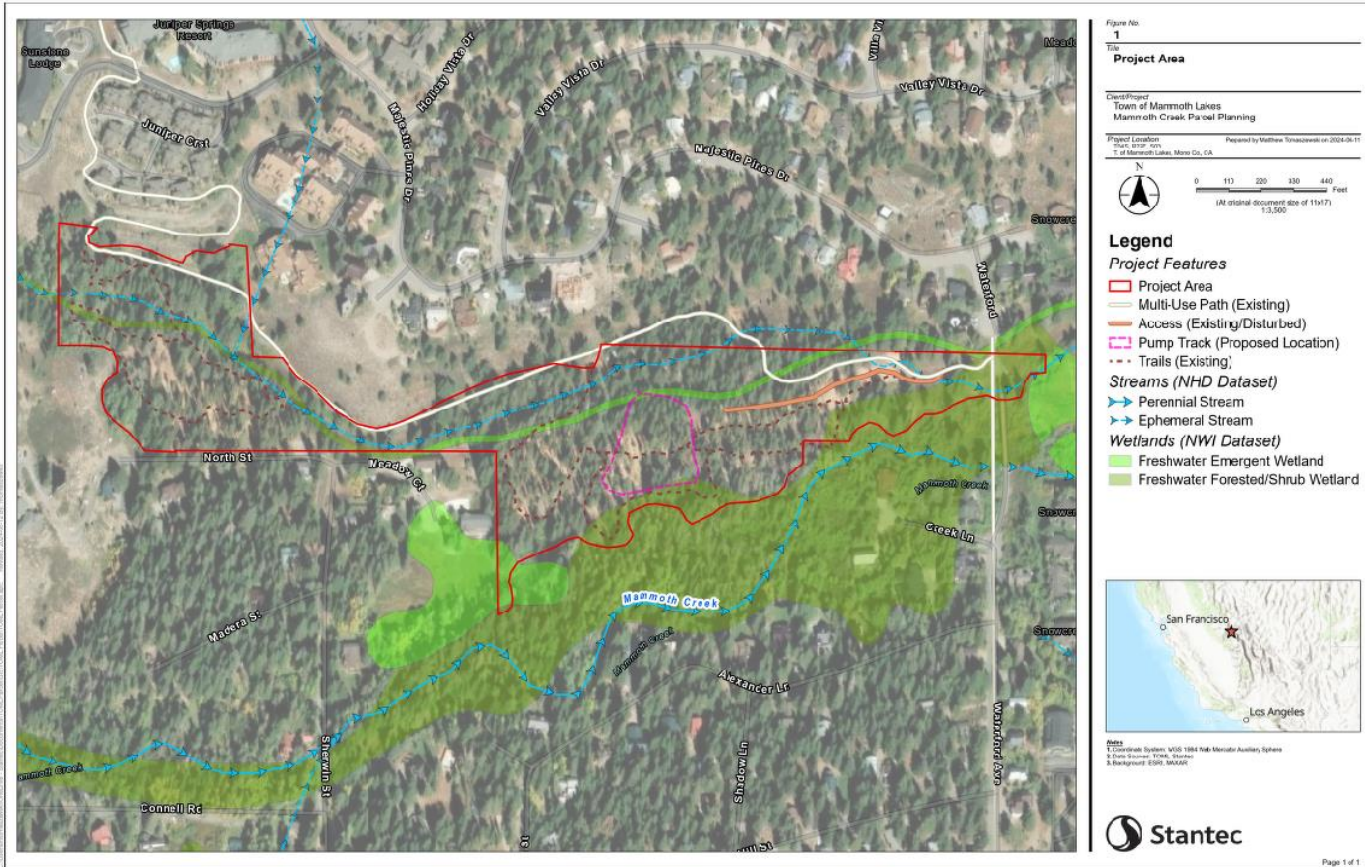




# OFFICE OF OUTDOOR RECREATION OUTDOOR RECREATION MANAGER UPDATE

December 12<sup>th</sup>, 2024

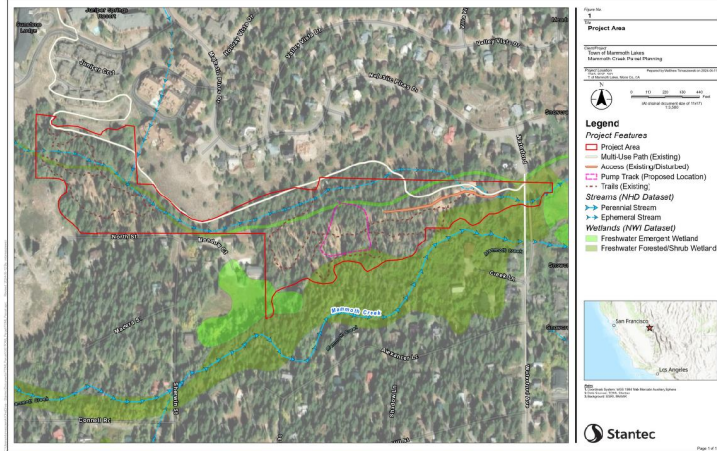
# MAMMOTH CREEK PARCEL



Disclaimer: This document has been prepared based on information provided by others as cited in the Notes section. Stantec has not verified the accuracy or completeness of this information and shall not be responsible for any errors or omissions which may be incorporated herein as a result. Stantec assumes no responsibility for third-party information, services, and the recipient accepts full responsibility for verifying the accuracy and completeness of this work.

# MAMMOTH CREEK PARCEL

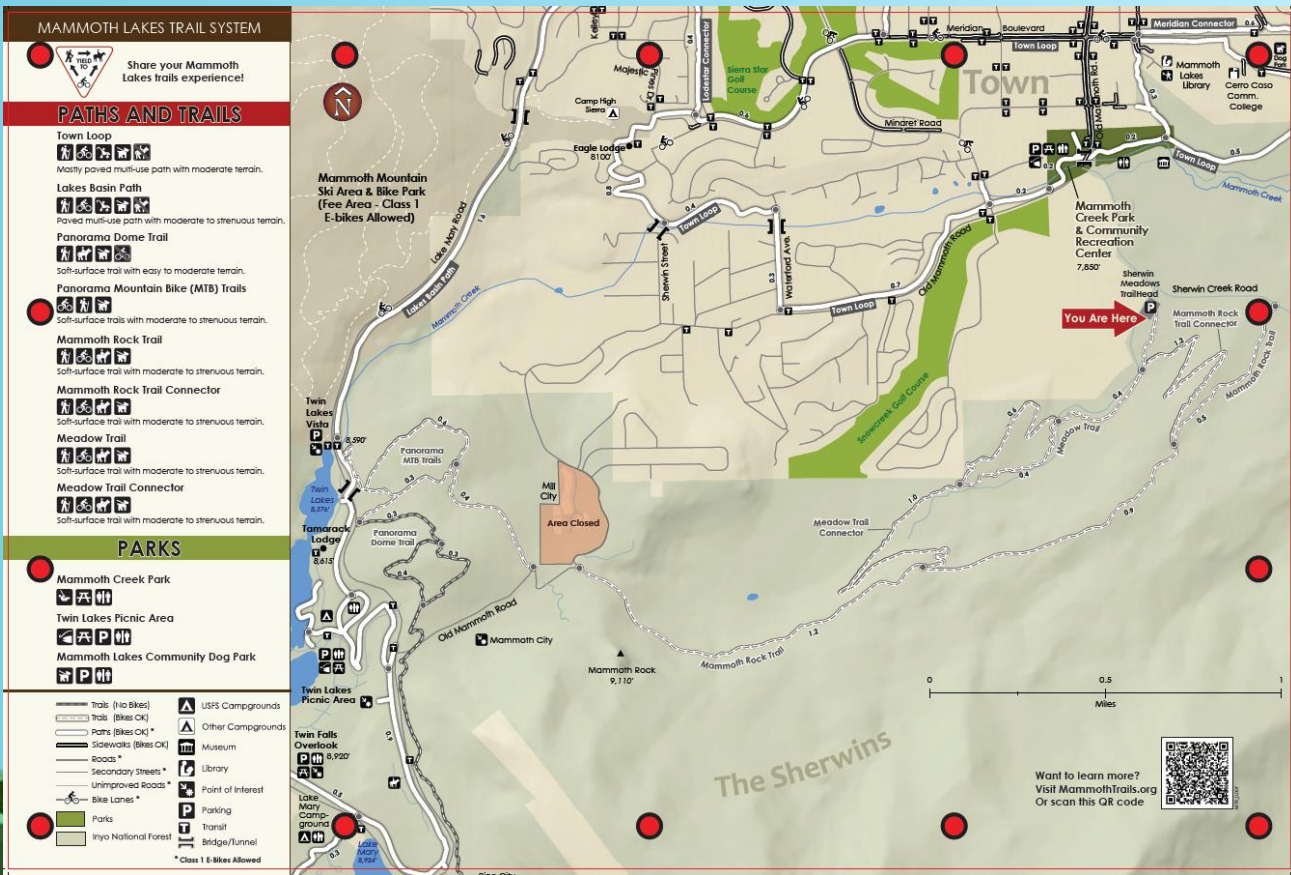
## WHAT DOES THE COMMUNITY WANT?



- DEVELOP SOCIAL MEDIA SURVEY
- CREATE QR WITH ONLINE SURVEY



# MLTS SIGNAGE CONVERSATION ON APPROVALS



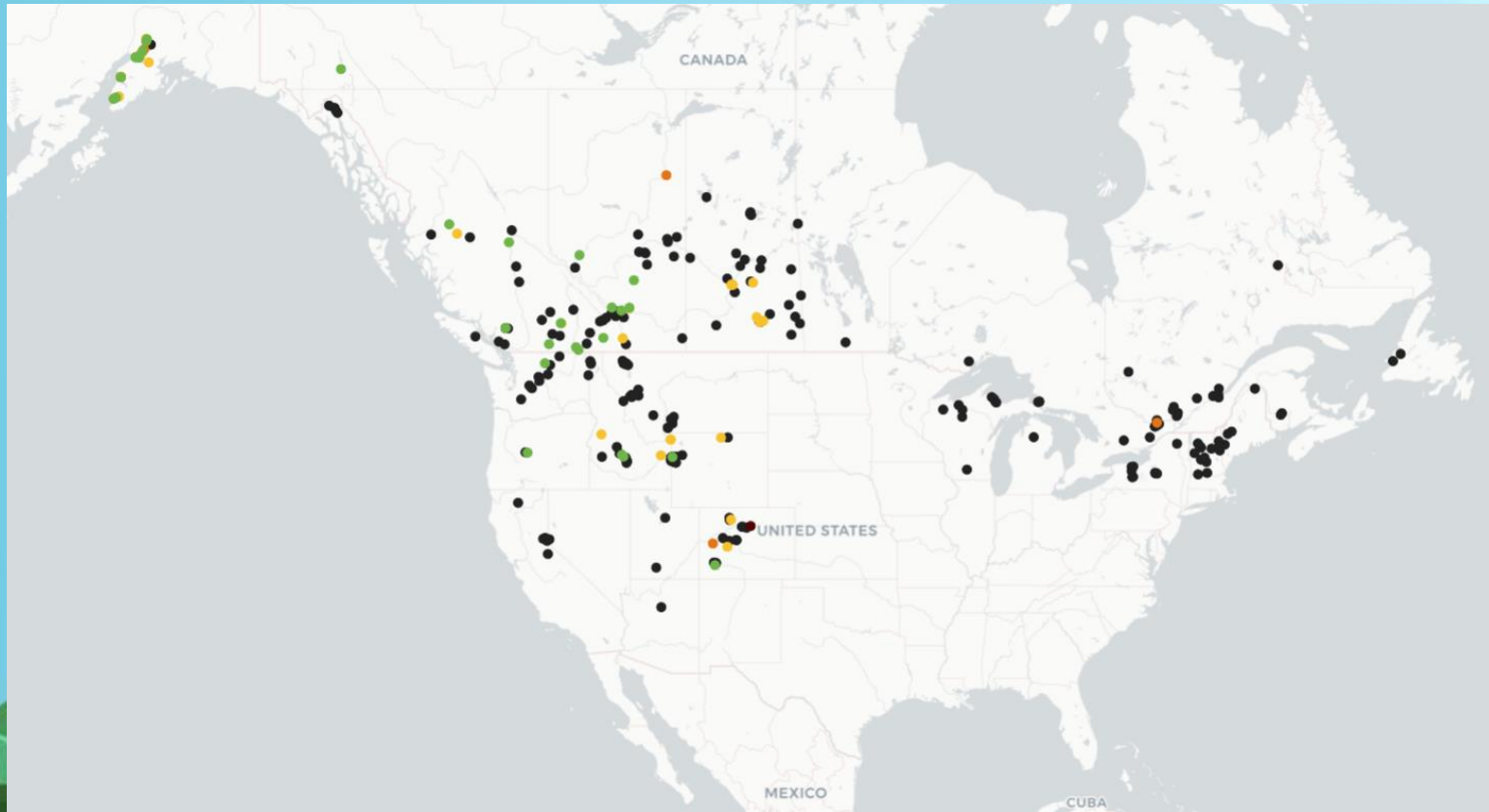
# MLTS SIGNAGE CONVERSATION ON APPROVALS



- DOES MTC DESIRE TO ENGAGE IN ANY CHANGES TO MLTS SIGNAGE?
- WOULD MTC LIKE TO SEE A FORMAL APPROVAL PROCESS FOR ANY SIGNAGE CHANGES?

PATHS AND TRAILS	
<b>Town Loop</b>	
Mostly paved multi-use path with moderate terrain.	
<b>Lakes Basin Path</b>	
Paved multi-use path with moderate to strenuous terrain.	
<b>Panorama Dome Trail</b>	
Soft-surface trail with easy to moderate terrain.	
<b>Panorama Mountain Bike (MTB) Trails</b>	
Soft-surface trails with moderate to strenuous terrain.	
<b>Mammoth Rock Trail</b>	
Soft-surface trail with moderate to strenuous terrain.	
<b>Mammoth Rock Trail Connector</b>	
Soft-surface trail with moderate to strenuous terrain.	
<b>Meadow Trail</b>	
Soft-surface trail with moderate to strenuous terrain.	
<b>Meadow Trail Connector</b>	
Soft-surface trail with moderate to strenuous terrain.	

# NORDIC PULSE SNO-CAT TRACKING



# NORDIC PULSE SNO-CAT TRACKING



**Cabin Loop**  
 Closed 0.65km ↑ 23m ↓ 29m

**Soldier Hollow**  
 Midway, Utah, USA

Recent Report About Stats Historical Reports

Perfect spring skiing on our 8+ km of made snow trails this week! Come out early for fun fast skiing or enjoy softer conditions noon on.

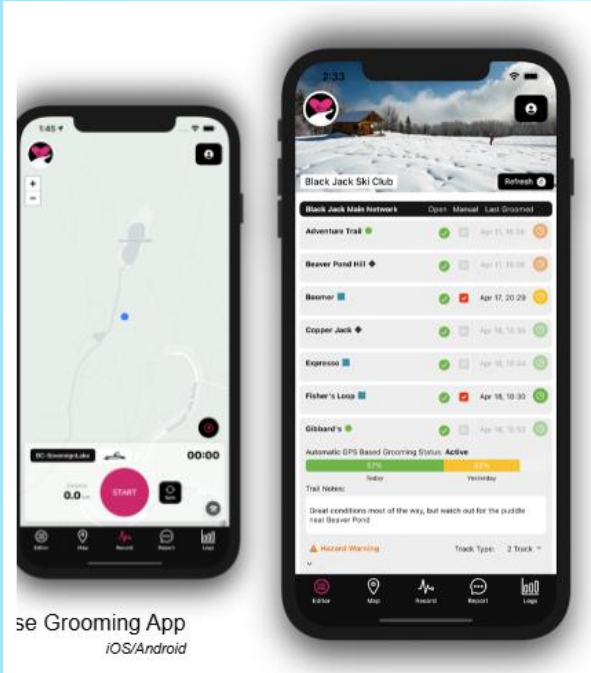
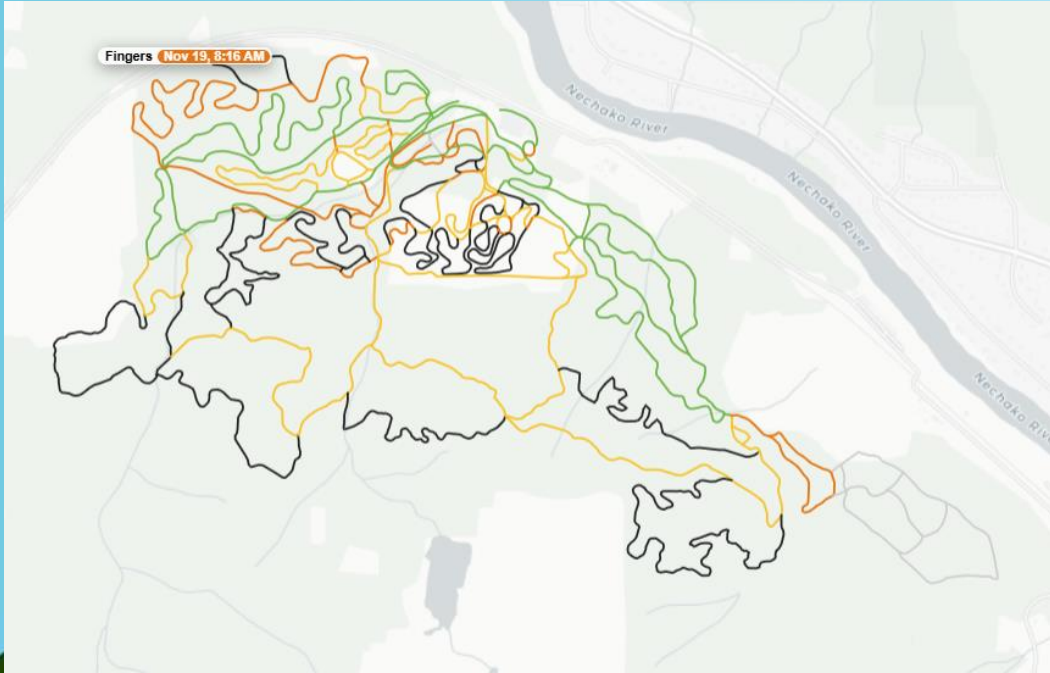
Reported on Mar 19, 2024 at 8:22 AM by Luke

ABC	Distance	Open	Last Groomed/Trackset
Blanton	0.46km	✗	Mar 31, 9:43 PM
Big Buckaroo	0.38km	✗	Apr 1, 9:54 PM
Cabin Loop	0.65km	✗	Apr 2, 10:43 PM
City Slicker	0.87km	✗	Apr 2, 11:02 PM
Corkscrew	0.19km	✗	Mar 5, 11:44 PM
Cowboy Way	0.87km	✗	Mar 20, 8:28 AM
East End Cutoff	0.25km	✗	Feb 10, 10:06 PM
Finger of Fate	0.73km	✗	Mar 7, 8:55 PM
Goin' Home	1.81km	✗	Apr 2, 10:42 PM
Herber Valley Express	1.02km	✗	Mar 7, 9:02 PM
Hermodas Hill	0.53km	✗	Apr 2, 10:42 PM
Little Buckaroo	1.61km	✗	Apr 2, 11:37 PM
Lower Hollow	0.5km	✗	Apr 2, 11:02 PM
Olympic	3.08km	✗	Apr 1, 9:56 PM
Parallel Universe (2.5 km)	2.72km	✗	Apr 2, 11:06 PM
Plum Lucky	0.47km	✗	Apr 1, 9:43 PM
Pony Express	1.87km	✗	Mar 20, 7:53 AM
Roller Coaster	3.1km	✗	

### Last Groomed

- 🔄 In Progress
- 🟢 Today
- 🟡 1-3 Days Ago
- 🟠 4-6 Days Ago
- 🔴 7-10 Days Ago
- 🟤 11-14 Days Ago
- ⚪ 14+ Days Ago
- ⚫ Closed / Unknown

# NORDIC PULSE SNO-CAT TRACKING





# SUMMER 2025

## NO USFS SEASONAL EMPLOYEES

- INITIAL MEETING HELD NOVEMBER 19<sup>TH</sup>, 2024
- THE TOWN OF MAMMOTH LAKES, SIERRA FOREVER, MONO COUNTY AND MAMMOTH LAKES TOURISM WERE ALL IN ATTENDANCE
- PROGRAM AREAS DISCUSSED: MAMMOTH LAKES WELCOME CENTER, MINARET VISTA, WILDERNESS & TRAILS, AND RECREATION
- THE INYO WILL FOLLOW UP WITH EXACT STAFFING NEEDS AND PARTNERS WILL DETERMINE HOW WE CAN ASSIST
- FURTHER UPDATES WILL BE PROVIDED AT THE NEXT MTC MEETING

# NEW INTERPRETIVE SIGNAGE SHOW & TELL



## MAMMOTH LAKES TRAIL SYSTEM Help Stop Aquatic Invasions!



**Remember the Shell that You Buy!**

**Are Invasive Species Bad?**  
Non-native aquatic invasive species can have devastating environmental, recreational, and economic impacts and potentially harm human health. For example, Clamworm and Zebra mussels have caused millions of dollars of damage to boats and infrastructure throughout the nation, destroyed ecosystems, and damaged native fish populations.

**What Can You Do?**  
Clean, Dry, and Drain with water or all objects used in the water.

**DRY**  
Clean boots and dry them for 72 hours before reuse.


**DRAIN**  
Empty boots of water and dry them for 72 hours before reuse.

**DISPOSE**  
Dispose of boots in a designated disposal bin.

**Did You Know?**  
Fishing equipment and recreational vessels are the biggest culprits of transferring aquatic invasive species between freshwater lakes, streams, and rivers. It is important to clean, dry, and dry off gear before entering any body of water.





## MAMMOTH LAKES TRAIL SYSTEM What is Lurking in Lake George?



**Did You Know?**  
The lake boat received an estimated 3,274 fishing lure traps from Lake George. A SCUBA diver reported seeing a lake trout in Lake George. The lake trout is a highly invasive species that has caused significant damage to the lake's ecosystem.

**What Can You Do?**  
Dispose of fishing lures in designated areas. Do not throw lures overboard. Use proper fishing techniques to reduce bycatch.


## MAMMOTH LAKES TRAIL SYSTEM A Seven Day Underwater Clean Up in 2023

**Did You Know?**  
A SCUBA diver reported seeing a lake trout in Lake George. The lake trout is a highly invasive species that has caused significant damage to the lake's ecosystem.

**What Can You Do?**  
Dispose of fishing lures in designated areas. Do not throw lures overboard. Use proper fishing techniques to reduce bycatch.






## MAMMOTH LAKES TRAIL SYSTEM Mountain Pine Beetle Outbreaks



**What is This Bug About?**  
Mountain pine beetles, a type of bark beetle, are the size of a grain of rice, have six legs, many, and lay eggs. The larvae feed on the inner bark, which damages the water line. When trees suffer from stress, such as drought or overcrowding, their ability to fight off insects is lowered. Bark beetles are native here and a natural condition they would not kill trees, but in overcrowded conditions they would kill them.

**A Blanket of Dangerous Fungi**  
Bark beetles eat and carry fungi into trees, which can kill them. The fungi cause rot inside the trunk of a tree, creating a hole in the bark, causing the tree to stop making the thick wax that protects it from insect damage. Not all fungi are bad for trees, and some types play an important role in a tree's survival.

**What is Being Done to Help?**  
Blankets to stop beetles from spreading. Fungicides to kill beetles. Pruning to remove dead trees. Thinning to reduce tree density. Prescribed fire to reduce tree density.

## MAMMOTH LAKES TRAIL SYSTEM The Health of Our Forests



**What Makes a Healthy Forest?**  
A healthy forest is a forest that is able to regenerate itself after a disturbance. It has a diverse mix of tree species, ages, and heights, and it has a healthy soil and water cycle.

**Fire is Natural**  
Fire is a natural part of many forest ecosystems. It helps to clear away dead trees and undergrowth, and it allows new trees to grow.

**Did You Know?**  
Many years ago, lightning and fire initiated by indigenous people created lower density forests, tall pines, more sunlight on the forest floor, and more open space. The arrival of Euro-Americans forced our native people and burned their burning practices. This increased tree density and led to our modern forest fires.



## MAMMOTH LAKES TRAIL SYSTEM Know Your Local Forest




**Conifer vs. Deciduous**  
Conifer trees have needles and cones. Deciduous trees have broad leaves and lose them in the fall.

**Identifying Nearby Trees**  
Jeffrey pine is a three-needle conifer with 6-10 inch cones. The cones are very heavy and pointy.

**Did You Know?**  
Typical, gnarled trunks of mature trees in groups of two, three, or five. Pine have soft, but angular, flat needles.




## MAMMOTH LAKES TRAIL SYSTEM Know Your Local Forest



**Conifer vs. Deciduous**  
Conifer trees have needles and cones. Deciduous trees have broad leaves and lose them in the fall.

**Identifying Nearby Trees**  
Jeffrey pine is a three-needle conifer with 6-10 inch cones. The cones are very heavy and pointy.

**Did You Know?**  
Typical, gnarled trunks of mature trees in groups of two, three, or five. Pine have soft, but angular, flat needles.



## MAMMOTH LAKES TRAIL SYSTEM Know Your Local Forest



**Conifer vs. Deciduous**  
Conifer trees have needles and cones. Deciduous trees have broad leaves and lose them in the fall.

**Identifying Nearby Trees**  
Jeffrey pine is a three-needle conifer with 6-10 inch cones. The cones are very heavy and pointy.

**Did You Know?**  
Typical, gnarled trunks of mature trees in groups of two, three, or five. Pine have soft, but angular, flat needles.



**QUESTIONS?**

**COMMENTS?**

