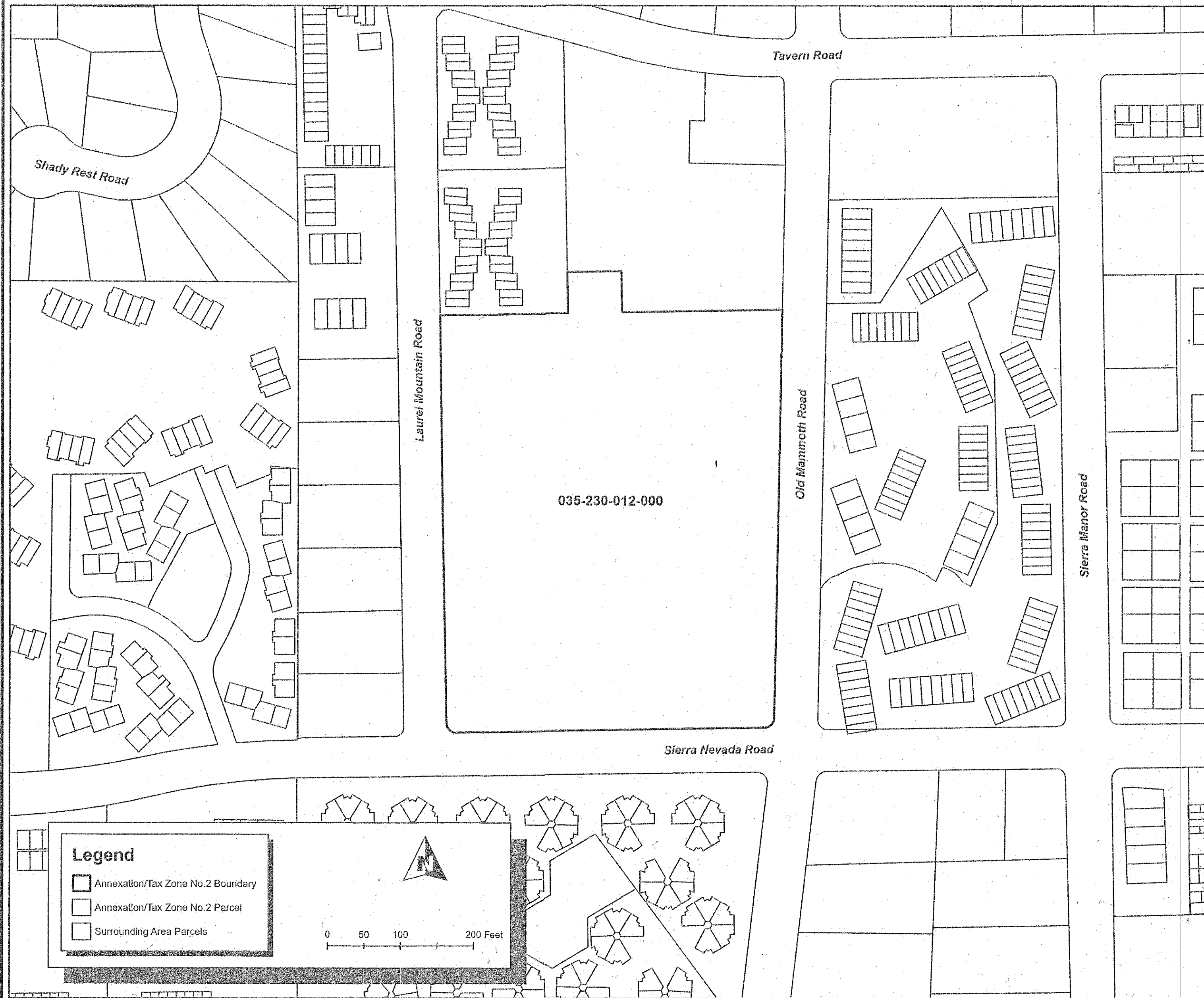


ANNEXATION MAP NO. 1 OF
TOWN OF MAMMOTH LAKES
COMMUNITY FACILITIES DISTRICT NO. 2023-1
(MAINTENANCE SERVICES)
TAX ZONE NO. 2

TOWN OF MAMMOTH LAKES
COUNTY OF MONO
STATE OF CALIFORNIA



FILED IN THE OFFICE OF THE TOWN CLERK OF THE TOWN OF MAMMOTH LAKES THIS 2nd DAY OF January 2025
[Signature]
TOWN CLERK *Asst. Clerk*
TOWN OF MAMMOTH LAKES
MONO COUNTY, CALIFORNIA

I HEREBY CERTIFY THAT THE WITHIN MAP SHOWING THE PROPOSED BOUNDARIES OF ANNEXATION NO. 1 TO THE TOWN OF MAMMOTH LAKES COMMUNITY FACILITIES DISTRICT NO. 2023-1 (MAINTENANCE SERVICES), TOWN OF MAMMOTH LAKES, COUNTY OF MONO, STATE OF CALIFORNIA, WAS APPROVED BY THE TOWN COUNCIL OF THE TOWN OF MAMMOTH LAKES AT A REGULAR MEETING THEREOF, HELD ON THE 10th DAY OF December, 2024, BY ITS RESOLUTION NO. 24-59.

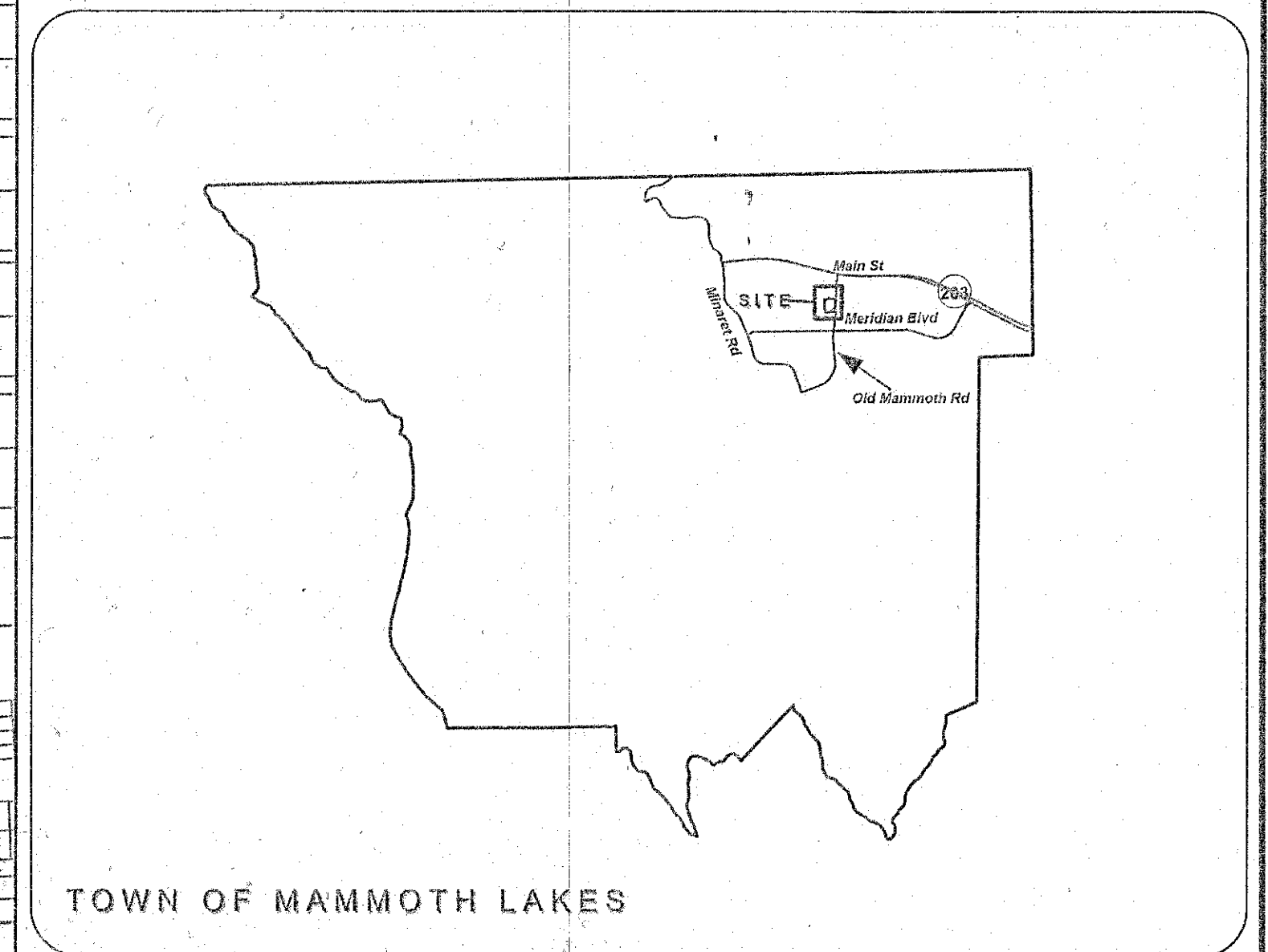
[Signature]
TOWN CLERK *Asst. Clerk*
TOWN OF MAMMOTH LAKES
MONO COUNTY, CALIFORNIA

FILED THIS 14 DAY OF January, 2025, AT THE HOUR OF 11:38 O'CLOCK A M, IN BOOK 2 OF MAPS OF ASSESSMENT AND COMMUNITY FACILITIES DISTRICTS AT PAGE 91 IN THE OFFICE OF THE COUNTY RECORDER OF THE COUNTY OF MONO, STATE OF CALIFORNIA.
INSTRUMENT NUMBER: 2025000110

Queenie Barnard Dylon Huggans
COUNTY RECORDER Deputy Clerk Recorder
COUNTY OF MONO, CALIFORNIA

FOR PARTICULARS OF THE LINES AND DIMENSIONS OF ASSESSOR PARCELS, REFERENCE IS MADE TO THE MAPS OF THE ASSESSOR, COUNTY OF MONO, STATE OF CALIFORNIA.

REFERENCE IS HEREBY MADE TO THAT CERTAIN MAP ENTITLED "PROPOSED BOUNDARIES OF TOWN OF MAMMOTH LAKES COMMUNITY FACILITIES DISTRICT NO. 2023-1 (MAINTENANCE SERVICES), TOWN OF MAMMOTH LAKES, COUNTY OF MONO, STATE OF CALIFORNIA" FILED THE 8TH DAY OF MARCH 2023, IN BOOK 2 OF MAPS OF ASSESSMENT AND COMMUNITY FACILITIES DISTRICTS AT PAGE 89 IN THE OFFICE OF THE COUNTY RECORDER FOR THE COUNTY OF MONO, STATE OF CALIFORNIA, WHICH THIS ANNEXATION MAP AFFECTS.



Source: Mono County GIS
Geographic Coordinate Reference: GCS North American 1983
Projection: NAD 1983 StatePlane California III FIPS 0403 Feet

