

**Mammoth Disposal  
Company**

# ***Solid Waste & Recycling Annual Report***



Presented by Cassidy Moyer  
Sustainability Coordinator

# Staff Org Updates & Introductions

## New Faces

Blake Martines



Mayra Pineda



Cassidy Moyer



## Customer Service Rep Organization Changes

Maui Polanco



Office Manager



Office and TS Manager

TS Attendant

Javier Cruz-Alejandro



Driver



Operations Supervisor





# Overall Performance in 2024



## Monthly Tonnage Annualized

We accepted 11,936.753 tons of material from the Town of Mammoth Lakes. This is about 995 tons per month.

## Mattress Recycling

We recycled 946 mattresses with an average count of 99 going out per load.

## Green and E-Waste

Through our two town collection events we sent 3 tons of pine needle green waste to a composting facility and 2 tons which were used as alternative daily cover at Pumice Valley Landfill.

We also sorted and sent out over 12 tons of electronic waste including batteries, lightbulbs, TVs, & computers.



# Diversion Report

Things that didn't end up  
in a landfill!

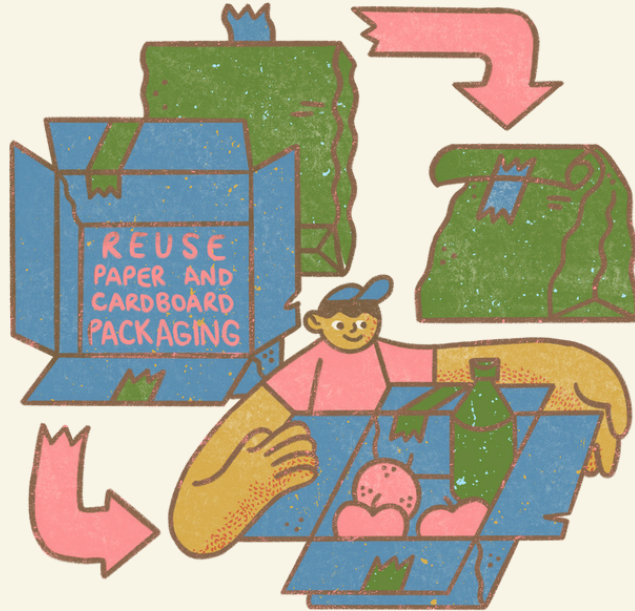
Overall annual diversion rate average of 14.89% which is 8.82% each month. This is up almost 5% compared to last year processing about 3% more materials each month.

This includes 671 tons of recycling (plastics/glass), 184 tons of green waste, and 203 tons of metal.





# Customer Overview



## Customer Count

2023	2024
Commercial <b>611</b>	Commercial <b>679</b>
Residential (TS) <b>2,111</b>	Residential (TS) <b>2,161</b>
Res (curbside) <b>191</b>	Res (curbside) <b>198</b>
Curbside Recycle <b>179</b>	Curbside Recycle <b>176</b>
Roll-off Accounts <b>44</b>	Roll-off Accounts <b>34</b>
Total of <b>3,136</b> Accounts	Total of <b>3,248</b> Accounts

## Cardboard Bin Count

 80 total commercial cardboard bins in service 2024

## Customer Complaints

Customer complaints **down 63%** with a total of 55 customer complaints that were recorded. Most resolved within one day to one week.

### Most common

- #1 Bin repair -21 calls
- #2 Carabineer/Lock replacement- 16 calls
- #3 Missed pickups- 10 calls
- #4 Bin replacements- 8 calls



# Rate Increases

- Service prices will increase every year on January 1st.
- Based on the Consumer Price Index.
- Rates increased 2.94% to cover increased brokerage costs.
- Fuel surcharge decreased to 4.35%.



## Why?

These price adjustments help to protect from fluctuating costs like inflation, changes in material, processing costs, and project procurement.



# New Trucks/ Technology

## 2024 Purchases

- Additional Spotter Shed **\$8 thousand**
- Site cameras **\$11 thousand**
- Truck lift **\$55 thousand**
- Bear-resistant bins **\$120 thousand**
- Roll-offs **\$71 thousand**
- MammothMountainInn roll-off **\$11 thousand**
- Tire Machine **\$85 hundred**
- Small Truck 6001 **\$165 thousand**





YES

Please recycle

Por favor recicla

- Cardboard - Flattened, Non-waxed
- Paper - Clean Office/Copy paper, Newspaper
- Aluminum
- Tin
- Plastic - #1 PETE & #2 HDPE
- Glass - All Colors

NO

These items are not recyclable

Most of these items cannot be recycled in any area

Estos elementos son no reciclables

- NO COVID-19 waste – gloves, masks, etc.
- NO medical waste – syringes, tubing and biohazard waste should be disposed of as such.
- NO hazardous material, household hazardous waste, propellants or chemicals.
- NO aerosol cans – may contain hazardous materials.
- NO batteries.
- NO ceramics or pottery.
- NO diapers.
- NO household glass – window panes, light bulbs, tableware.
- NO juice boxes, paperboard or coated cardboard.
- NO used napkins or paper towels.
- NO plastic bags or plastic wrap. Check with your grocery store to return the bags.
- NO plastic bottle tops. Please remove before recycling your bottles.
- NO shredded paper.
- NO Styrofoam.
- NO contaminated take out containers – clean thoroughly first. AND you can only recycle plastics #1 and #2.
- NO tires.
- NO wire hangers.
- NO yogurt cups

What We Accept at the Mammoth Disposal Transfer Station

Lo que aceptamos en el Estación de Transferencia

Hazardous Waste

- Antifreeze
- Flourescent Light Bulbs
- Batteries
- Motor Oil

Household

- Household Trash
- Recyclable Material
- Bulky Items: Furniture & Appliances
- Clean Mattresses & Box Springs
- Green Waste: Pine Needles & Yard Debris
- Construction Debris
- Ashes
- Electronics (e-waste)
- Metal

PaintCare Program

Do you have only paint, stain and varnish to recycle? Many paint stores now take back paint, stain, and varnish year-round during their regular business hours as part of the PaintCare program. The program is free for all residents and most businesses. To find participating drop-off locations and details about which products are accepted, please visit [www.paintcare.org](http://www.paintcare.org) or call (855) 724-8809.

For more info on acceptable items at the transfer station call 760-934-2201 or visit [mammothdisposal.com](http://mammothdisposal.com)

MAMMOTH DISPOSAL

Scan QR code for RECYCLE RIGHT GUIDE

MAMMOTH DISPOSAL

Scan QR code for our Recycle Right Guide!

REDUCE • REUSE • RECYCLE

Know before you throw!

We care about our communities & helping create a sustainable lifestyle.

Visit our new Transfer Station located at 59 Commerce Drive in the Mammoth Lakes Industrial Park.

760-934-2201

MammothDisposal.com

# Sustainability Outreach

## Community Involvement

- Informational presentations to Rotary, Restaurant Association, and Lodging Association.
- Weekly social media posts regarding trash/recycling.
- Under SB1383 we hold regular meetings for Food Waste Prevention, Recovery, and Redistribution. Continued outreach with MUSD garden tower program and assembly/classroom visits.
- Recycle Right Magnets at various locations around town. Informational brochures regarding state/local mandates given to businesses around town.
- Earth day ads and events with MUSD, Chamber of Commerce, and other local groups.
- 1,005.12 Pounds of Trash and 8.45 Pounds of Recycling Collected during “Trashy Thursday” Events.
- Two Community cleanup and collection days.



# State Mandates Overview

Due to rural population and our elevation, we are exempt from many factors of these mandates.

## SB1383 California's Short-Lived Climate Pollutant Reduction Strategy

- Signed into law in 2016 to set methane emissions reduction targets
- TOML is exempted from a large portion
- Still required to do education and outreach with communities to help prevent, reduce, and redistribute food waste.



## AB1826 Mandatory Commercial Organics Recycling

- Exempt from food organic collection
- Still required to collect green/yard waste

## AB2902 Rural Exemption Extension

- Changes exemption from December 31, 2026 to January 1, 2037.
  - Changes re-assessment from every 2 years to every 4 years.



## AB341 Mandatory Commercial Recycling

- Any commercial or public entity that generates 4 or more cubic yards of commercial solid waste per week OR any multifamily complex containing 5 or more units is required to subscribe to a recycling service.

## AB939 The California Integrated Waste Management Act

- Revises duties related to permits, inspection, and regulation of solid waste facilities.
- Requires counties and cities to prepare countywide integrated waste management plans.
- Mandates a minimum of diversion of waste from landfills.

# Other State & TOML Mandates

## Styrofoam Ban

- 13 businesses were non-compliant in November 2024.
- Since then all 13 are either fully compliant or transitioning to non-EPS options.
- As of January 2025 no fines have been issued.

STYROFOAM BAN

EXPANDED POLYSTYRENE FOODWARE

Mammoth Lakes

MAMMOTH DISPOSAL

Effective January 1, 2024, the Town of Mammoth Lakes will prohibit takeout foodware containers made from expanded polystyrene – commonly known as Styrofoam – pursuant to Municipal Code 8.15.020-8.15.030.

Banned Items

EPS foodware items used for containing, serving, or consuming prepared food, including cups, bowls, plates, trays, cartons, and boxes. These items are usually labeled as plastic #6.

Who is Affected?

- Any food service provider including any restaurant, grocery store, convenience store, cafeteria, farmers' market vendor, mobile food vendor, or catering operation that provides or sells prepared food or beverages on or off its premises within the Town.
- Transient lodging facilities, including hotels, motels, and bed and breakfasts that provide prepared food, regardless of whether the prepared food is complementary or available for purchase by the consumer.
- Special event operators that require approval of a special event permit from the Town or anyone leasing a Town facility for an event.

How to Comply

- Verify if your business currently uses EPS foodware containers.
- If you are using EPS foodware containers, contact your sales representative or wholesaler to ensure that you transition to non-EPS food packaging by January 1, 2024.
- If you believe that complying with the EPS ban would create an undue hardship or practical difficulty for your business, you may apply for an exemption of up to one year by emailing the Town Manager's Office at [plb@townofmammothlakes.ca.gov](mailto:plb@townofmammothlakes.ca.gov) explaining the reason(s) for your request. Any hardship exemption granted will expire on or before December 31, 2024.

## AB 1276

- Single-use foodware and condiments
- Can only be provided if requested by consumer.
- Comply regardless of dining method.

AB 1276

SINGLE-USE FOODWARE & CONDIMENTS

Mammoth Lakes

MAMMOTH DISPOSAL

Effective Jan. 1, 2022, AB 1276, a state mandate, prohibits food facilities and restaurants from providing any single-use foodware accessories or standard condiments to a consumer unless requested.

Single-Use Foodware Accessories & Standard Condiments

Utensils

Straws

Condiment Cups and Packets

Cup Lids

Stirrers

Splash Sticks

Cocktail Sticks and Toothpicks

Service Requirements

Dine-In

Only provide single-use accessories to consumers upon request or self-serve stations.

Third-Party Delivery

Third-party delivery platforms shall deliver only those single-use accessories and condiments selected by the consumer.

Take Out

Only provide single-use accessories to consumers upon request or offer.

Drive-Thru

Only provide single-use accessories if they are necessary to consume prepared food or requested by the consumer.

## AB 1162

- Bans single-use toiletries
- Use refillable containers
- Applicable to all lodging, STR's, and motels regardless of number of rooms.

AB 1162

SINGLE-USE HOTEL TOILETRIES

Mammoth Lakes

MAMMOTH DISPOSAL

AB 1162 effectively prohibits the use of small plastic toiletries, including shampoo, conditioner, and bath soap, across California hotels and lodging establishments.

Small Single-Use Toiletry Items Prohibited

Shampoo and Conditioner

Soap

Lotion

Toothpaste and Mouthwash

Other Personal Care Products Such As Ear Swabs and Cotton Buds

Alternative Items

- Reusable personal care products
- Refillable personal care products

Who is Affected?

- Any lodging establishment including one or more sleeping room accommodation that is rented or otherwise provided to the public, including, but not limited to a hotel, motel, resort, bed and breakfast inn, or vacation rental, including those owner-operated and those operated by rental companies.
- Effective Jan. 1, 2023, the state mandate applies to lodging establishments with more than 50 rooms, and January 1, 2024, it will apply to all lodging establishments with 50 rooms or less.

How to Comply

- Verify whether your business is using small personal care products of 6oz. or less.
- If you are using small personal care products, determine what alternative(s) would work for your business, and ensure that they are being utilized on or prior to the effective date.
- AB 1162 establishes that a lodging establishment found to be in violation of this act shall be liable for a civil penalty of \$500 for the first offense and \$2,000 for a second or subsequent offenses.

All info to local businesses, restaurants and lodging, in English and Spanish.



# Hazardous & Universal Waste

Collection procedures will change

*Starting March 2025*

Previous/Current	Future
Drop-off at customer request, no set schedule.	Change to only accepting on weekends from 8am-4pm.
HHW stored in various safe locations.	Fully compliant designated HHW storage separate from our other solid waste facilities.
Very limited acceptance.	Acceptance of any HOUSEHOLD chemicals.
Collect and store batteries throughout the year, then send big loads out.	Send out batteries using FedEx pickup on an as needed basis.



Currently have 3 employees trained to handle HHW.

In the process of developing an HHW Business plan.

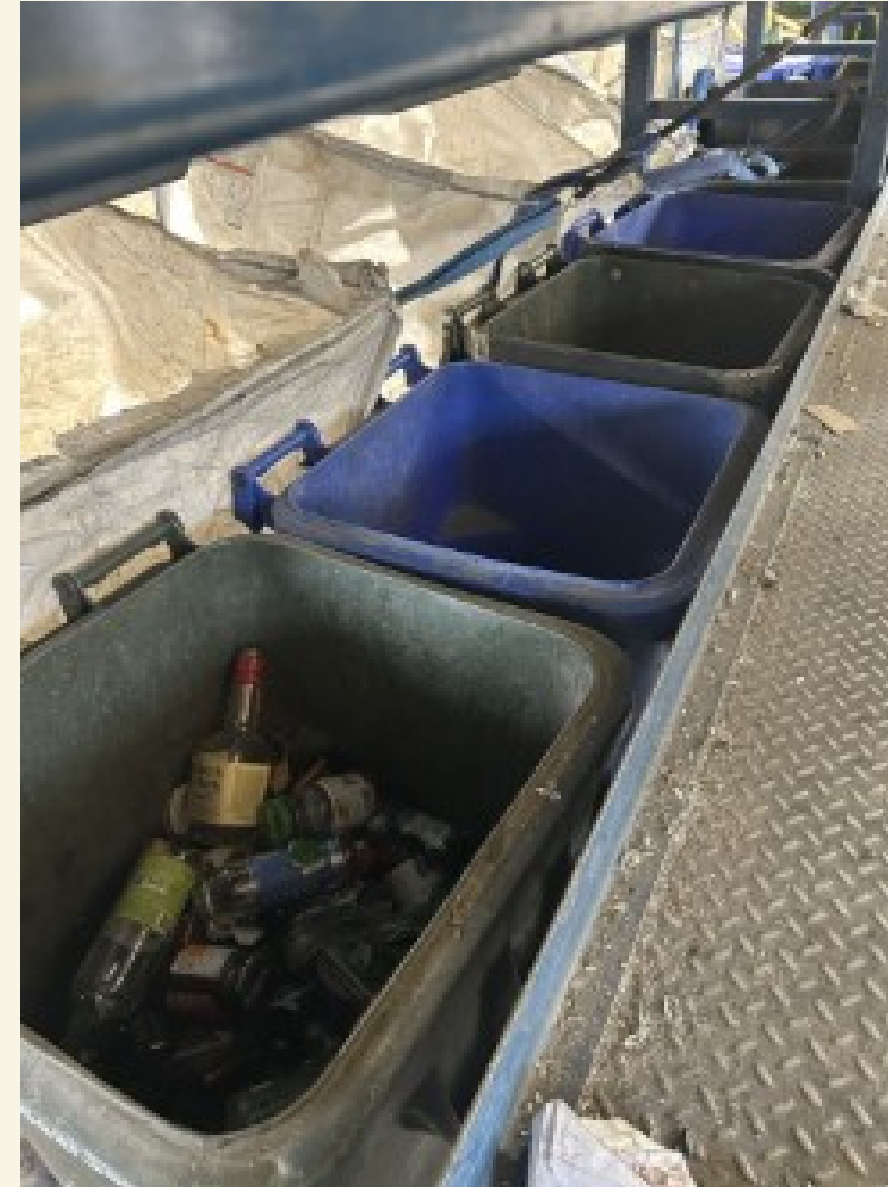
Expect increased outreach about HHW and Universal Waste, what it is, and how to keep it out of our waste stream.

# Program Growth!

## AB341 MCR

Already compliant in past years!

- ✓ Updated evaluation of current compliance.
- ✓ Increased waste assessments for businesses and complexes.
- ✓ Enhanced documentation and tracking of self haul service.





# New BuyBack Center Software

What will look different?

**Starting March 1st 2025!**



✓ Instead of cash,  
we will now  
offer checks.

✓ ID verification  
process using  
pictures.

✓ Electronic  
signature  
capture.

**Redeeming at Recycling Centers** \$\$\$  
Recycling centers may pay CRV refunds by weight or by count.

**Daily load limits:**

- 100 pounds aluminum
- 100 pounds plastic
- 1,000 pounds for glass

**Customers may request to be paid by container count for up to:**

- 50 glass
- 50 aluminum
- 50 plastic

**Questions or concerns?** Call 1-800-RECYCLE

**Starting Jan. 1, 2024**

New Beverages	New Wine & Liquor Containers
<i>Subject to CRV (with or without CRV Label)</i>	
<b>Wine • Liquor • Juice</b>  <b>5¢ CRV</b> Less than 24 oz.  <b>10¢ CRV</b> 24 oz. or More <b>Glass • Aluminum Plastic • Bimetal Containers</b>	<b>Pouches • Boxes • Cartons</b>  <b>25¢ CRV</b> <b>Bag-in-Box • Multi-Layer Pouch Paperboard Carton • Plastic Pouch</b> Bag-in-boxes must be intact as a single unit (bladder, spout, and cardboard) to be eligible for CRV

**Eligible Container Examples**

Only beverage containers purchased in California are eligible to be redeemed for a refund. These are sample containers and not the only eligible containers, nor an endorsement by CalRecycle.

**Beer and Malt Beverages**

- Budweiser • White Claw
- Coors • Mike's Hard Lemonade
- Corona

**Wine Coolers and Distilled Spirit Coolers**

- Arbor Mist White Zinfandel
- Woodchuck Hard Cider
- High Noon Vodka Soda

**Carbonated Soft Drinks**

- 7up • Coca-Cola
- Pepsi • Mountain Dew

**Non-Carbonated Soft Drinks**

- SoBe Lifewater
- Glaceau Vitamin Water
- Visvita Aloe Vera Drink

**Carbonated Fruit Drinks**

- Martinelli's Sparkling Cider
- Ocean Spray Sparkling Juice
- Izze Sparkling Juice

**Sport Drinks**

- Powerade
- Pedialyte Sport

**Noncarbonated Water**

- Evian Natural Spring
- Dasani Purified
- Fiji Natural Artesian

**Carbonated Water Beverages**

- LaCroix
- San Pellegrino
- Bubly

**Coffee and Tea Beverages**

- Starbucks Frappuccino
- Lipton Iced Tea
- Arizona Green Tea

**Fruit Juice**

- Coconut Water
- Dole Tropical Fruit Punch
- Simply Orange Juice

**Vegetable Juice**

- V8 Vegetable
- Odwalla Carrot
- Campbell's Tomato

**New Additions**

**Wine**

- Bogle
- Franzia
- Movino
- Bota Box

**Liquor**

- Smirnoff
- Jose Cuervo
- Cutwater Mai Tai

**Non Eligible Containers**

- Milk
- Medical Food
- Infant Formula
- Food and Non-Beverage Containers

# 3rd-eye Bin Tracking System

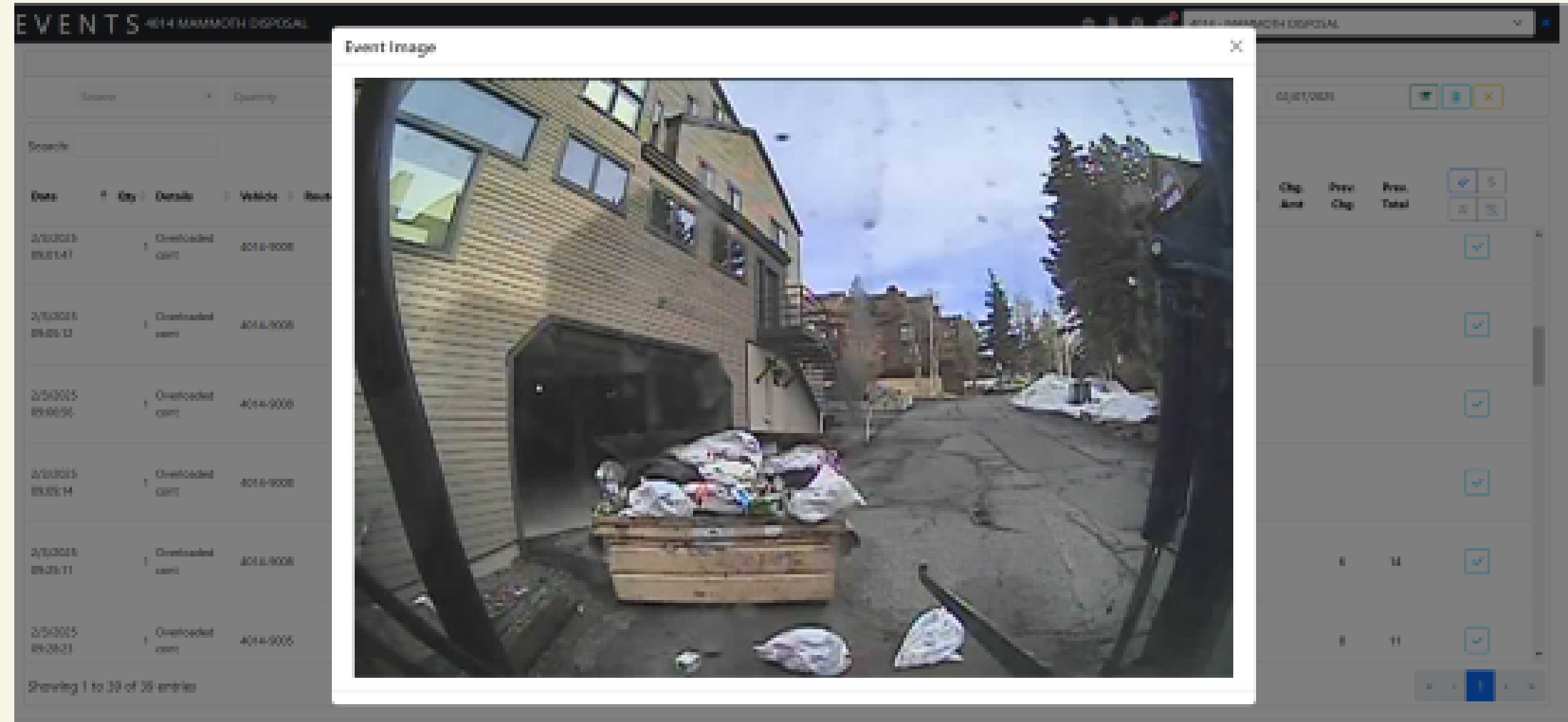
*Implemented January 1st, 2025*

✓ Camera on forks of truck.

✓ Takes a picture of bin when it does not appear square.

✓ We will be educating on why overfilled bins are a hazard to the environment and wildlife.

✓ Repeat offenses will lead to additional charges, based on amount overfilled.







*Thank You for  
Listening!*



Follow us on  
Facebook for  
our weekly  
*Trash Talk*  
Tuesday series!

@mammothdisposal

## Contact

Office (760) 934-2201

Cassidy Moyer  
(760) 210-0920  
cmoyer@wcnx.org

MammothDisposal.com