



TOWNS TO TRAILS PLAN

Alpine County, Mono County, Inyo County

ESCOG Board Meeting | March 2025



Project Overview

Tim Bevins
Senior Design Associate
Alta Planning + Design



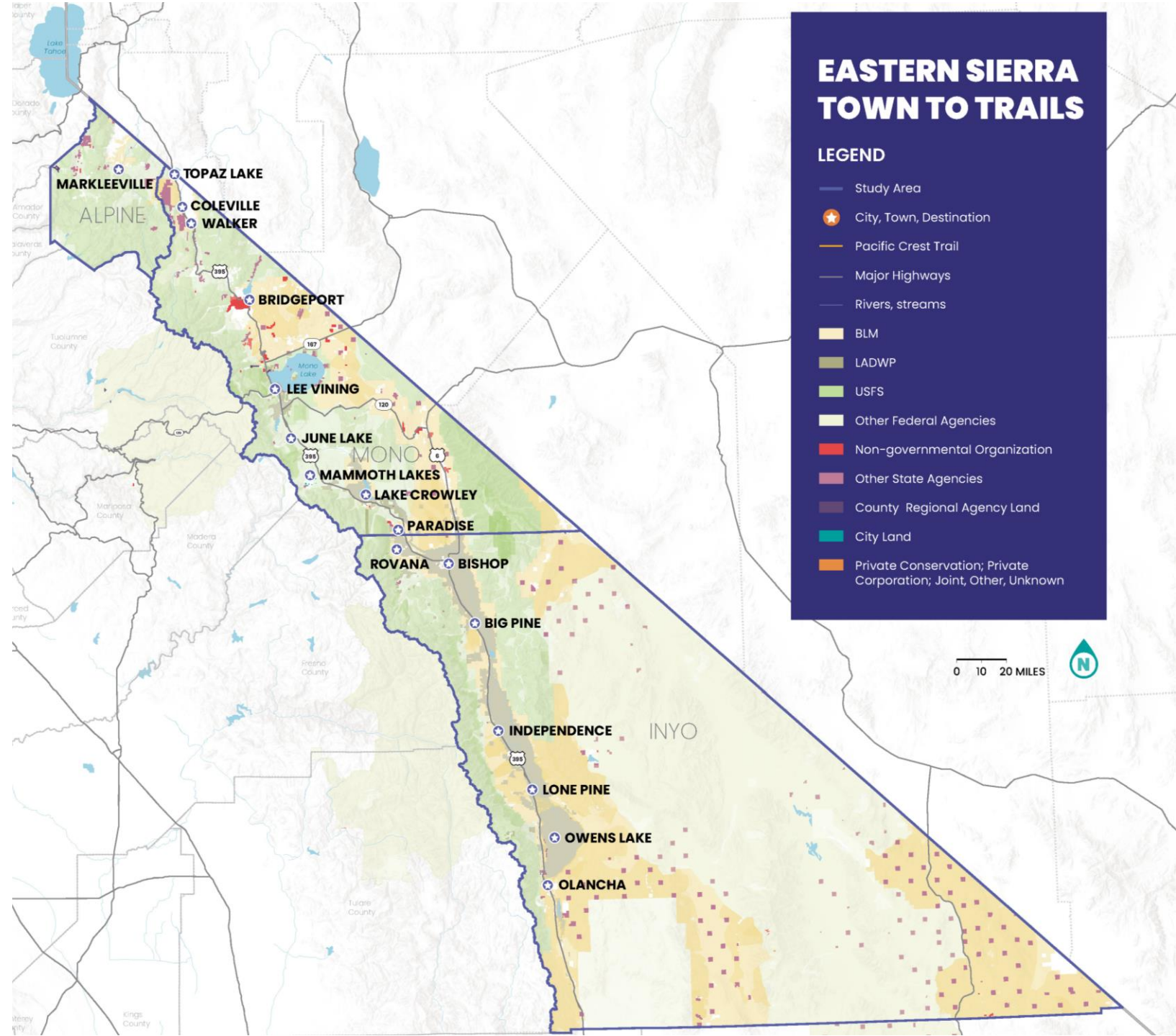
Study Area

- **Counties**

- Inyo
- Mono
- Alpine

- **Primary Land Managers**

- BLM
- USFS
- LADWP

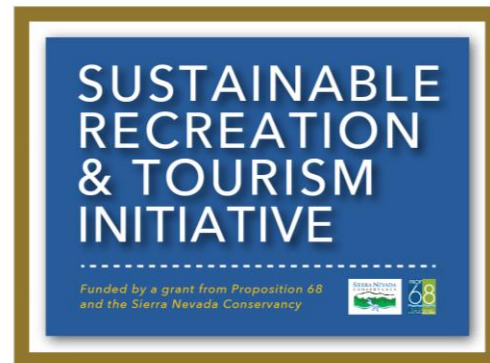


Goals

- Connect Eastern Sierra communities through a public-lands experience
- Leverage existing regional partnerships
- Establish implementation roadmap
- Bring economic benefit to communities
- Enhance recreational opportunities
- Commit to sustainable recreation
- Identify gaps and opportunities for connectivity to existing and future networks

History and Funding

- Eastern Sierra Sustainable Recreation Partnership (ESSRP)
- Sustainable Recreation and Tourism Initiative (SRTI)
- Sierra Nevada Conservancy and Proposition 68 Funding





Alignment Development



Collaborative Planning Process + Timeline

- **Spring 2023**
 - Agency and Tribal Partners Kickoff
 - Regional Stakeholders Kickoff
 - Data Review and Draft Alignment Review
- **Summer 2023**
 - Alpine, Mono, and Inyo County Stakeholders Workshops, Round 1
 - Comment Processing and Alignment Refinement
- **Winter 2023**
 - Draft Alignment Refinement
- **Spring 2024**
 - Alpine, Mono, and Inyo County Stakeholders Workshops, Round 2
 - Agency Coordination
- **Summer 2024**
 - Draft Alignment Refinement
- **Fall 2024**
 - Ground Truthing and Draft Plan
- **Winter2024/Spring 2025**
 - Final Alignment Refinement
 - Feasibility Study Delivery

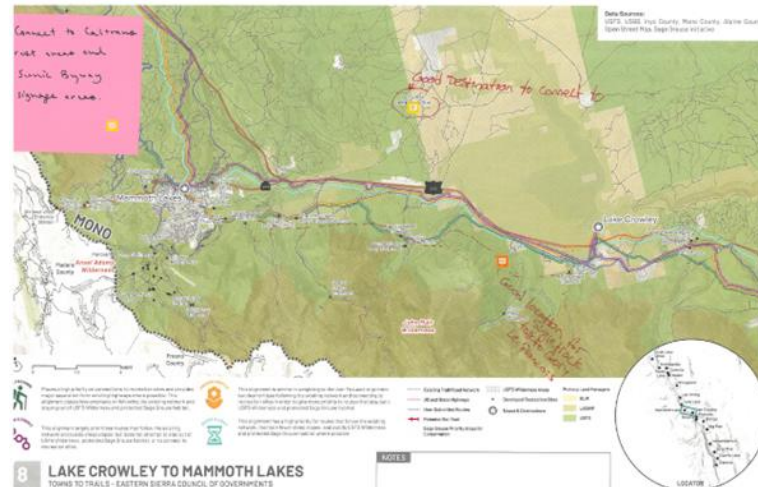
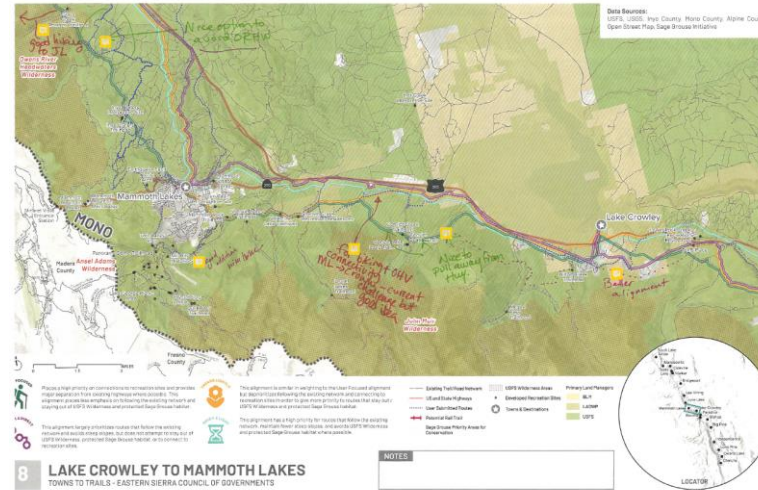
Alignment Approach

- Utilize existing facilities as much as possible
- Maintain existing usage between two points
- Minimize impacts of any potential new routes
- Connect to challenge spurs, destinations, and regional networks
- Establish T2T Backbone Alignment and identify gaps, opportunities, and challenges
- *There may be locations that will take further investigation to determine if increasing or focusing recreation in these locations would be appropriate/sustainable*
- *Segments may include highway use or some sections may not be feasible due to these resources*

- 10+ road/trail data layers
- County, USFS, BLM, LADWP merges

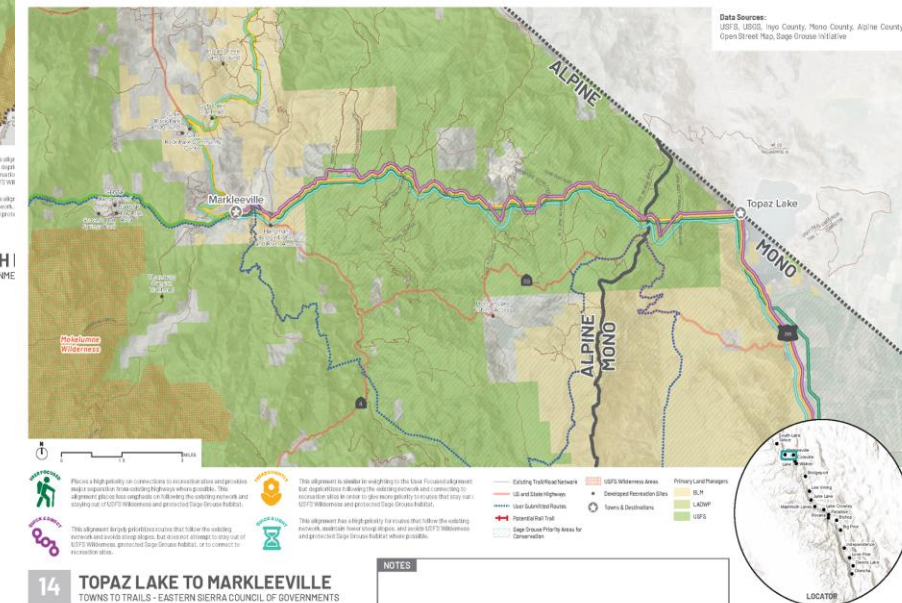
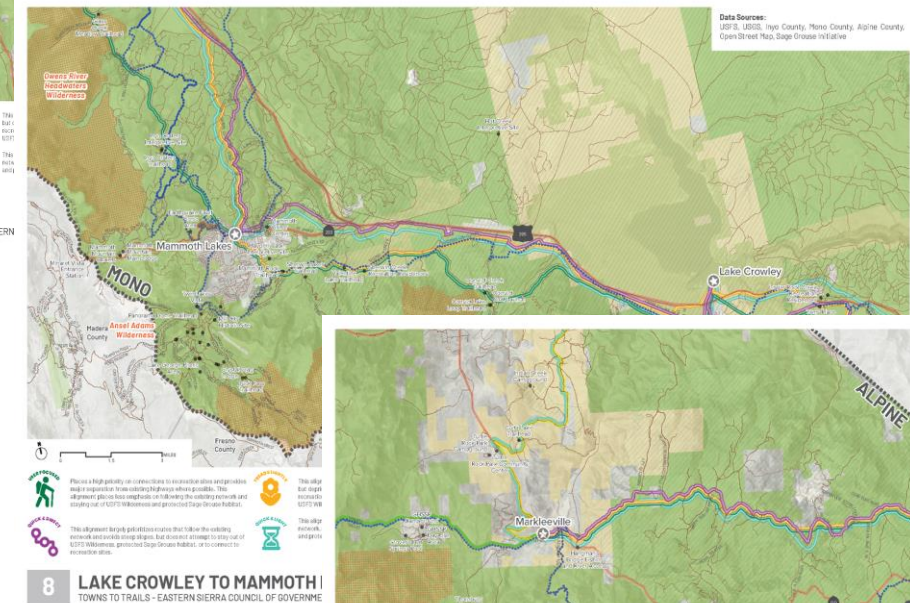
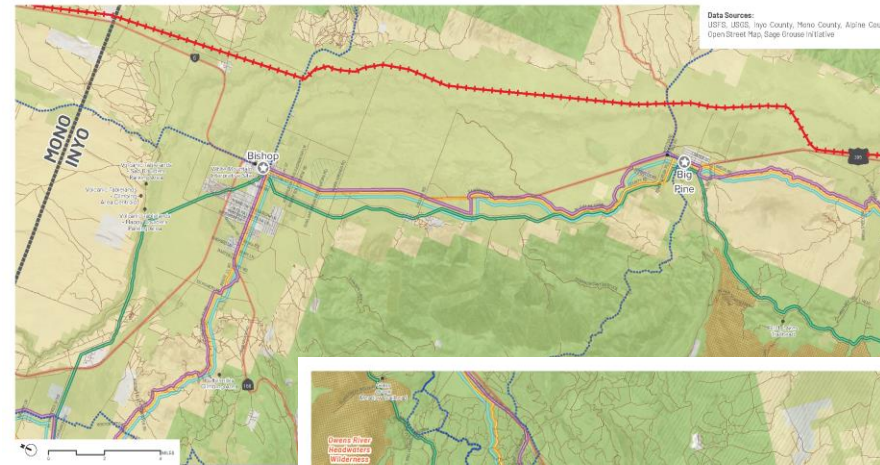


Collaborative Planning Workshops

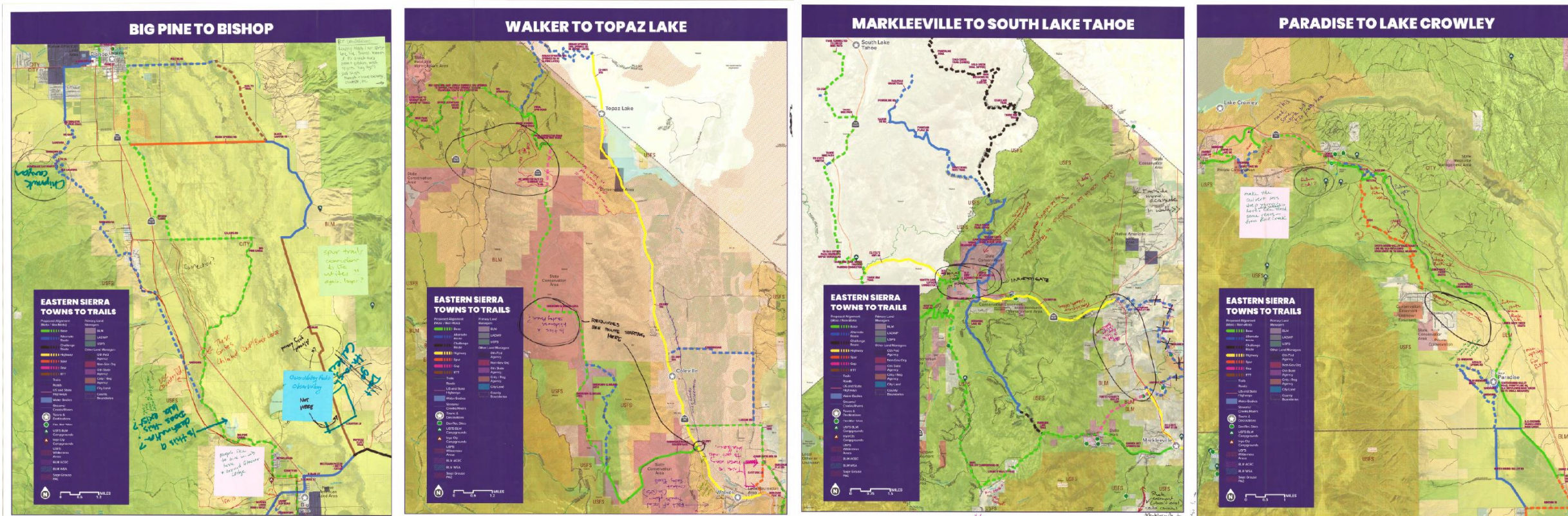


Phase 1 Mapbooks

- Alignments are not mutually exclusive
- Each crossing of alignments is a potential opportunity
- Mark up!
 - Alignments you like
 - Alignments you don't
 - Key destinations
 - Gaps, missing trails, etc.



Phase 2 Plots

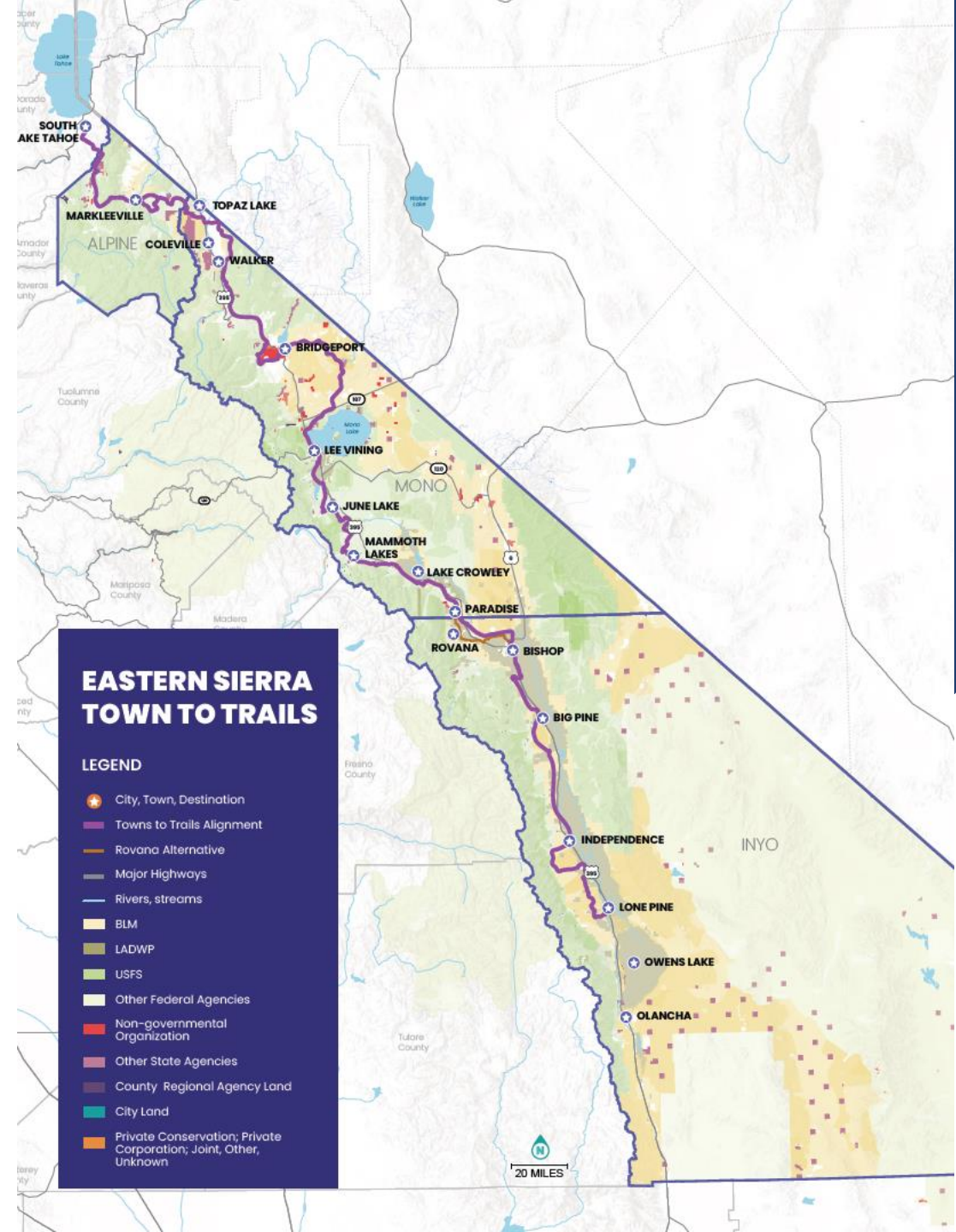
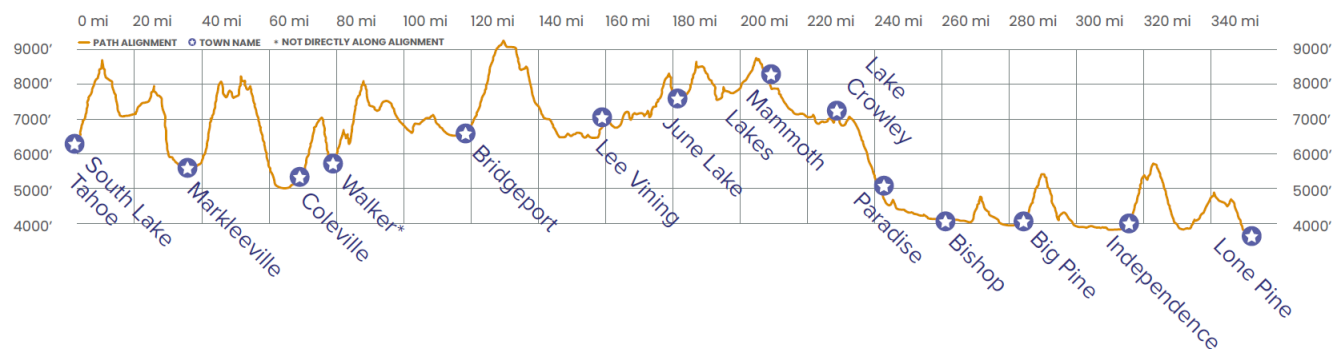


- Route Refinement and Contiguity
- Town and Feature Connections

Backbone Alignment

- 350 miles
- 33,000 feet of elevation change; average of 7% slope
- 56% scrublands, 17% developed areas, 13% forest, and 11% grasslands

Elevation Profile





Next Steps



Opportunities

- Range of trail experiences including single track & dirt roads that served both biking and hiking well.
- Towns and communities along the route, with plentiful opportunities for sustainable tourism.
- Food, water, camping, and hotels, regularly accessible along the route.
- Continuous narratives (historical, geology, ecology) are present, providing a further purpose (education and connection) to the route beyond recreation.
- Easily split into “segments” which could be ridden in shorter trips, which may be more feasible for regular users.
- Opportunity to integrate wildfire resilience with recreation infrastructure.

Characteristics

- Areas with difficult route finding/lack of maintenance or signage.
- Several spots near or on major roads and highways (i.e. gaps).
- Small portions of very difficult riding/hiking, largely due to exposure to windy/sandy conditions or steep gradients.

A Note on Gaps

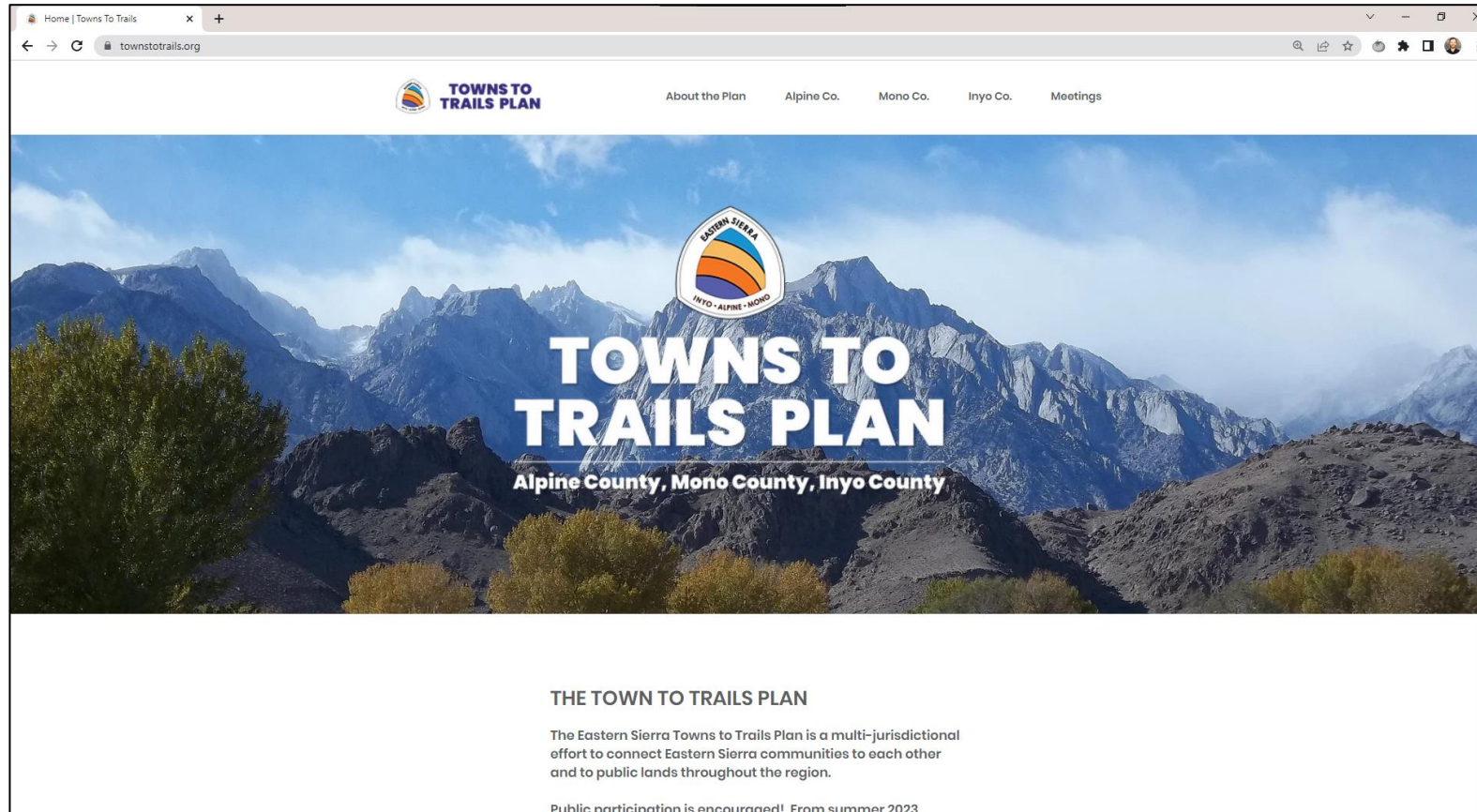
- Feasibility Study to Identify Backbone Alignment
- Allowable Use, Protected Areas, Agency Regulations, Private Lands
- Community Input on Connections and Areas of Concern
- Opportunity for Future Alignment Planning

Next Steps

- Agency Coordination
- Tribal Coordination
- Community Partnerships
- Gap/Environmental Studies
- Experience/Spur Trail Connectivity Studies
- Existing Segment Blazing and Wayfinding
- Educational/Stewardship/Cultural Partnerships
- Maintenance Agreements and Cross-Agency Coordination

Stay Updated!

townstotrails.org





TOWNS TO TRAILS PLAN

alta

Eastern
Sierra
Council of
Governments

MLIPA
MANWORTH LAKES TRAILS • PUBLIC ACCESS

www.townstotrails.org | info@townstotrails.org



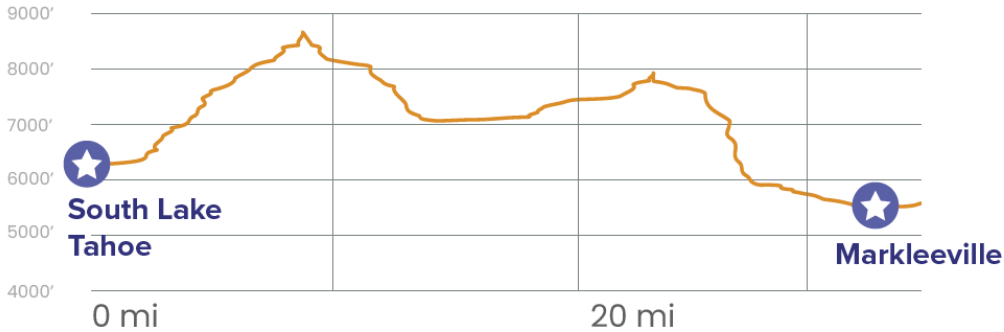
Alignment Overview





South Lake Tahoe to Markleeville

Elevation Profile



Map Legend

Alignment

- Final Alignment*
- Alignment on Hwy 395
- Gap Areas

Alignment Surface Type

- Trail
- Double Track
- Unpaved Roads
- Paved Roads

Destinations

- Cities and Towns
- Campgrounds

Land Managers

- BLM
- LADWP
- USFS
- Other Federal Agency
- Non-Gov Organization
- Other State Agency
- County / Reg Agency
- City Land
- County Boundaries

Protected Lands

- USFS Wilderness Areas
- Sage Grouse Habitat Areas
- BLM Wilderness Study Areas
- BLM Areas of Critical Environmental Concern

Water Bodies

- Lakes and Reservoirs
- Streams, Rivers, and Canals

Developed Recreation Sites

- Important Connections

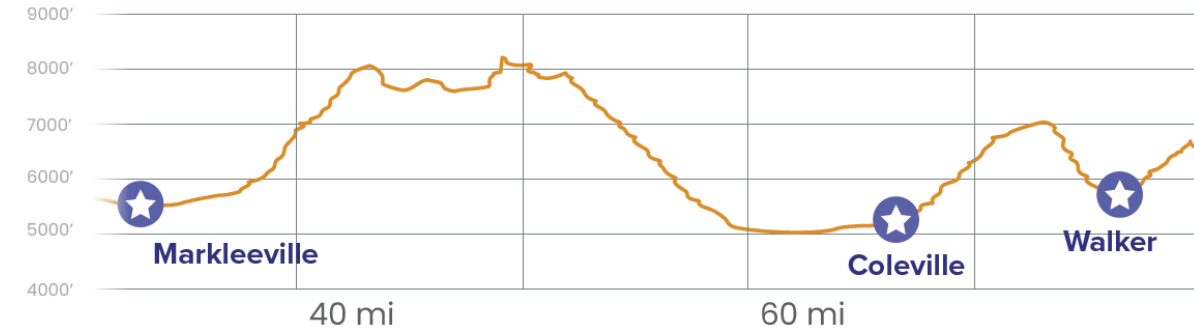
*Final alignment route is not suitable for through motorized use, allowed uses are subject to the approved uses of the relevant jurisdiction, refer to the jurisdiction for legal uses.





Markleeville to Walker

Elevation Profile



Map Legend

Alignment

- Final Alignment*
- Alignment on Hwy 395
- Gap Areas

Alignment Surface Type

- Trail
- Double Track
- Unpaved Roads
- Paved Roads

Destinations

- Cities and Towns
- Campgrounds

Land Managers

- BLM
- LADWP
- USFS
- Other Federal Agency
- Non-Gov Organization
- Other State Agency
- County / Reg Agency
- City Land
- County Boundaries

Protected Lands

- USFS Wilderness Areas
- Sage Grouse Habitat Areas
- BLM Wilderness Study Areas
- BLM Areas of Critical Environmental Concern

Water Bodies

- Lakes and Reservoirs
- Streams, Rivers, and Canals

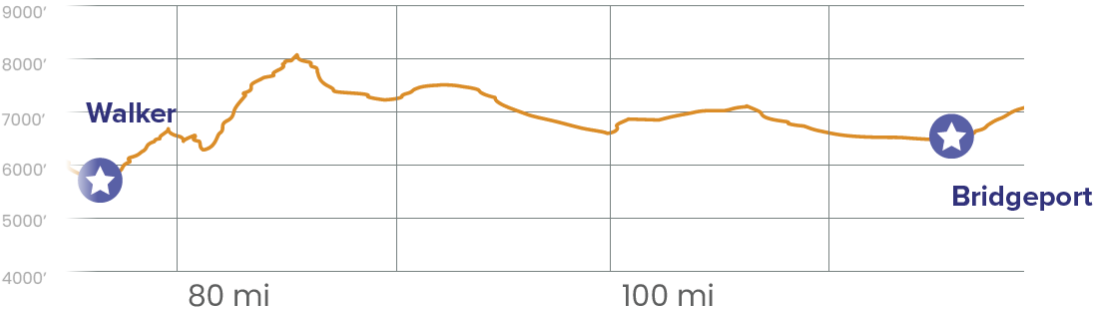
*Final alignment route is not suitable for through motorized use, allowed uses are subject to the approved uses of the relevant jurisdiction, refer to the jurisdiction for legal uses.





Walker to Bridgeport

Elevation Profile



Map Legend

Alignment

- Final Alignment*
- Alignment on Hwy 395
- Gap Areas

Alignment Surface Type

- Trail
- Double Track
- Unpaved Roads
- Paved Roads

Destinations

- Cities and Towns
- Campgrounds

Land Managers

- BLM
- LADWP
- USFS
- Other Federal Agency
- Non-Gov Organization
- Other State Agency
- County / Reg Agency
- City Land
- County Boundaries

Protected Lands

- USFS Wilderness Areas
- Sage Grouse Habitat Areas
- BLM Wilderness Study Areas
- BLM Areas of Critical Environmental Concern

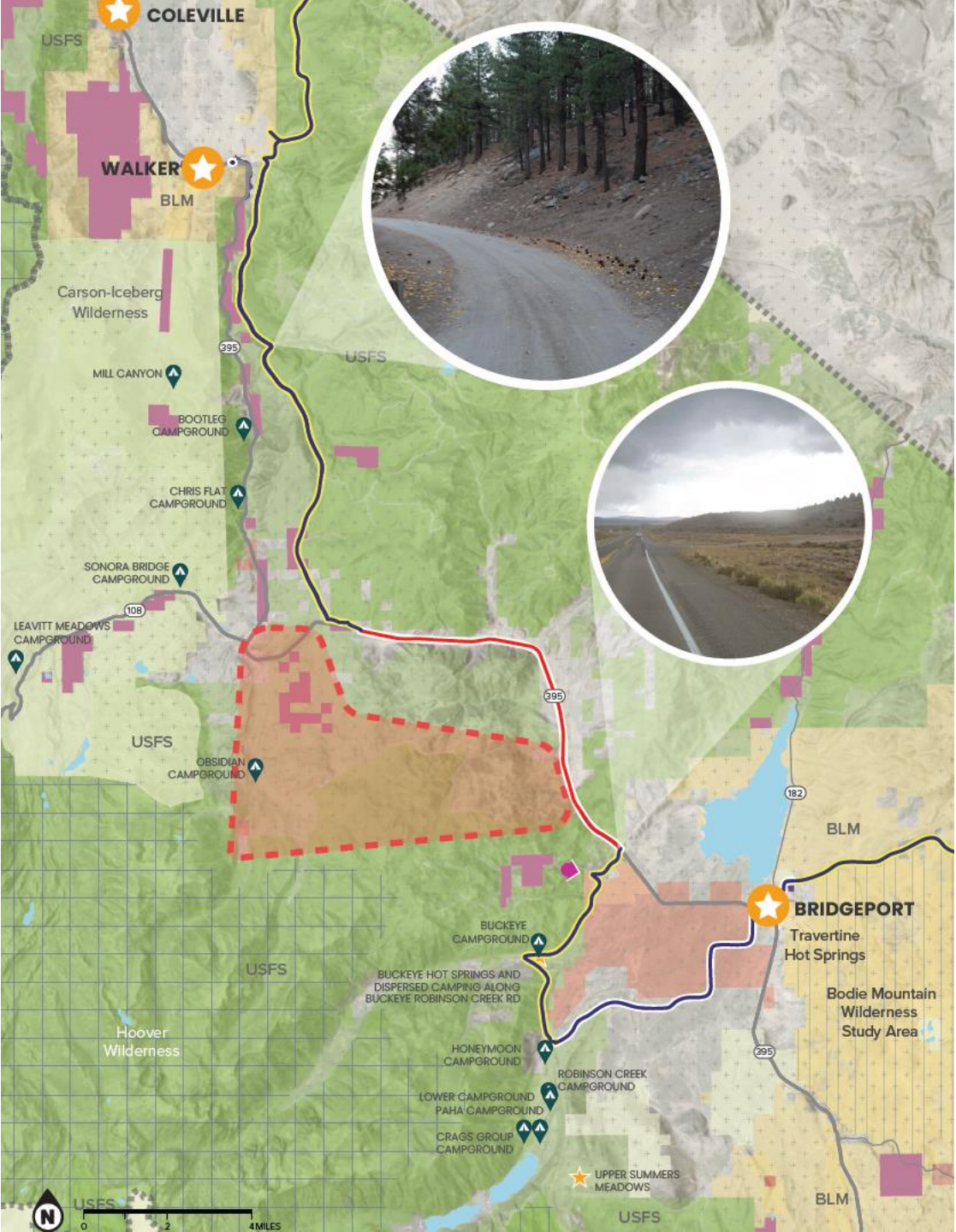
Water Bodies

- Lakes and Reservoirs
- Streams, Rivers, and Canals

Developed Recreation Sites

- Important Connections

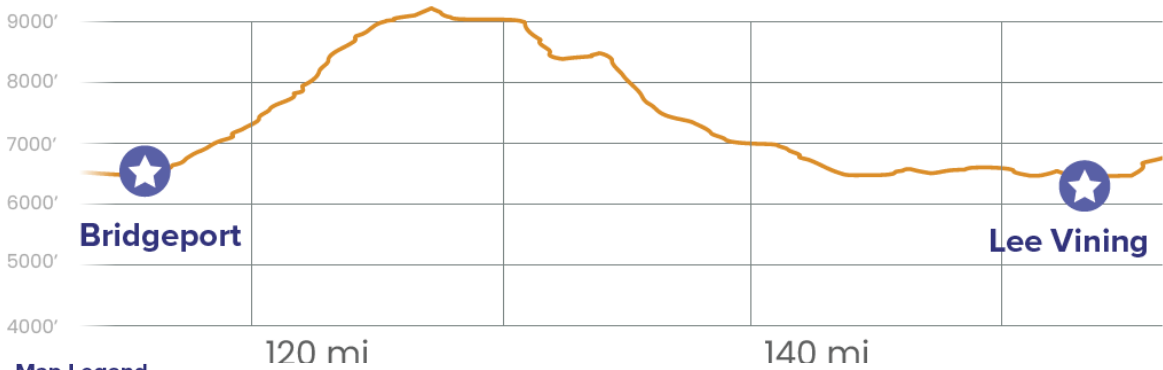
*Final alignment route is not suitable for through motorized use, allowed uses are subject to the approved uses of the relevant jurisdiction, refer to the jurisdiction for legal uses.





Bridgeport to Lee Vining

Elevation Profile



Map Legend

Alignment

- Final Alignment*
- Alignment on Hwy 395
- Gap Areas

Alignment Surface Type

- Trail
- Double Track
- Unpaved Roads
- Paved Roads

Destinations

- Cities and Towns
- Campgrounds

Land Managers

- BLM
- LADWP
- USFS
- Other Federal Agency
- Non-Gov Organization
- Other State Agency
- County / Reg Agency
- City Land
- County Boundaries

Protected Lands

- USFS Wilderness Areas
- Sage Grouse Habitat Areas
- BLM Wilderness Study Areas
- BLM Areas of Critical Environmental Concern

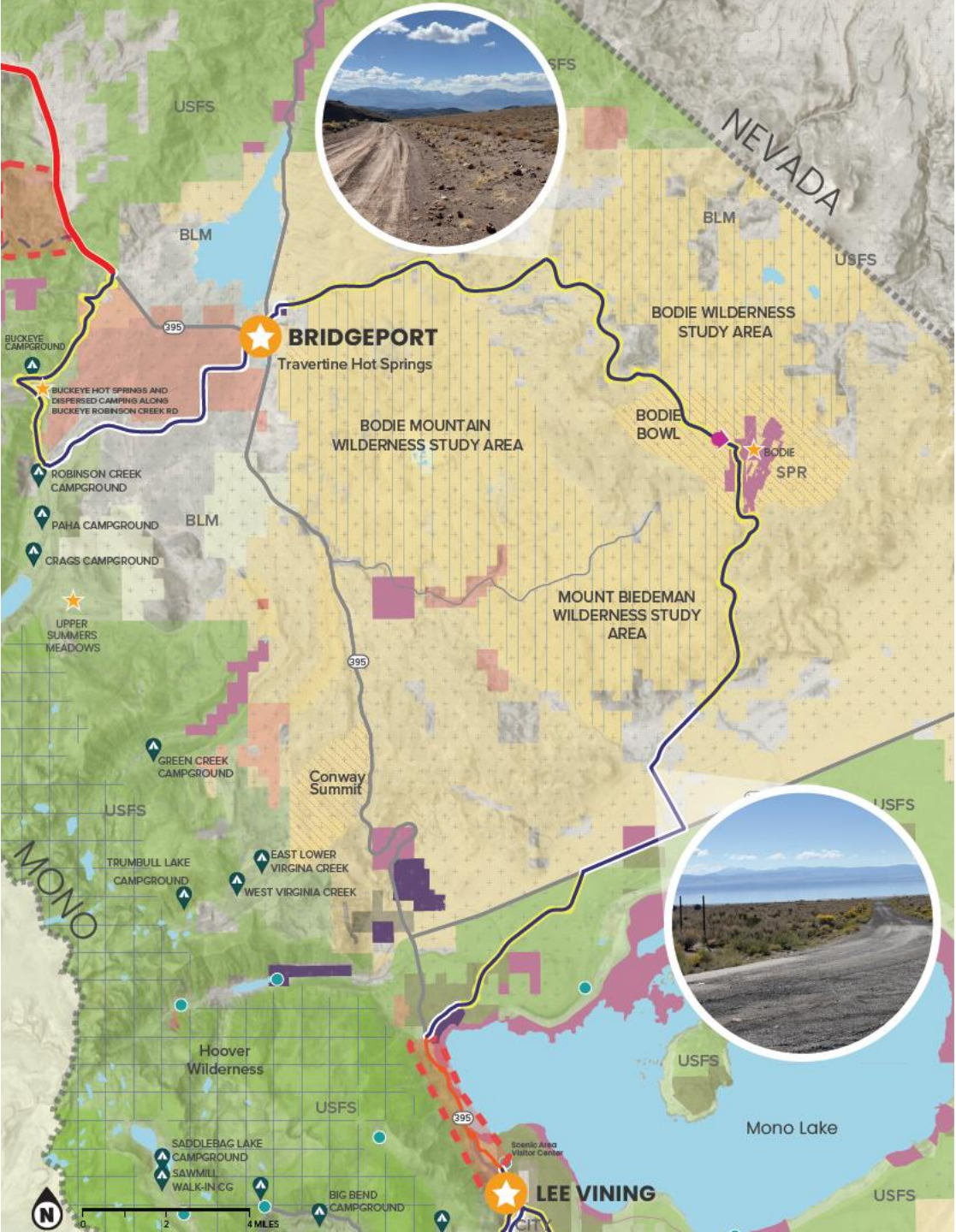
Water Bodies

- Lakes and Reservoirs
- Streams, Rivers, and Canals

Developed Recreation Sites

- Important Connections

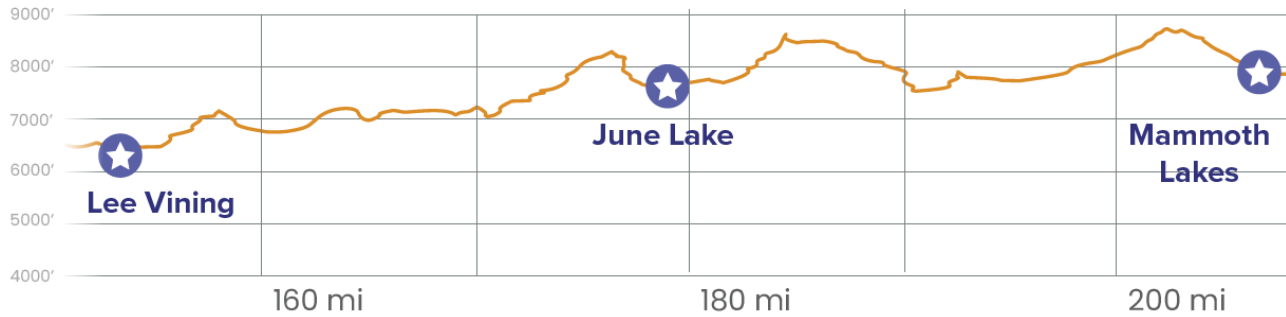
*Final alignment route is not suitable for through motorized use, allowed uses are subject to the approved uses of the relevant jurisdiction, refer to the jurisdiction for legal uses.





Lee Vining to Mammoth Lakes

Elevation Profile



Map Legend

Alignment

- Final Alignment*
- Alignment on Hwy 395
- Gap Areas

Alignment Surface Type

- Trail
- Double Track
- Unpaved Roads
- Paved Roads

Destinations

- Cities and Towns
- Campgrounds

Developed Recreation Sites

Important Connections

Land Managers

- BLM
- LADWP
- USFS
- Other Federal Agency
- Non-Gov Organization
- Other State Agency
- County / Reg Agency
- City Land
- County Boundaries

Protected Lands

- USFS Wilderness Areas
- Sage Grouse Habitat Areas
- BLM Wilderness Study Areas
- BLM Areas of Critical Environmental Concern

Water Bodies

- Lakes and Reservoirs
- Streams, Rivers, and Canals

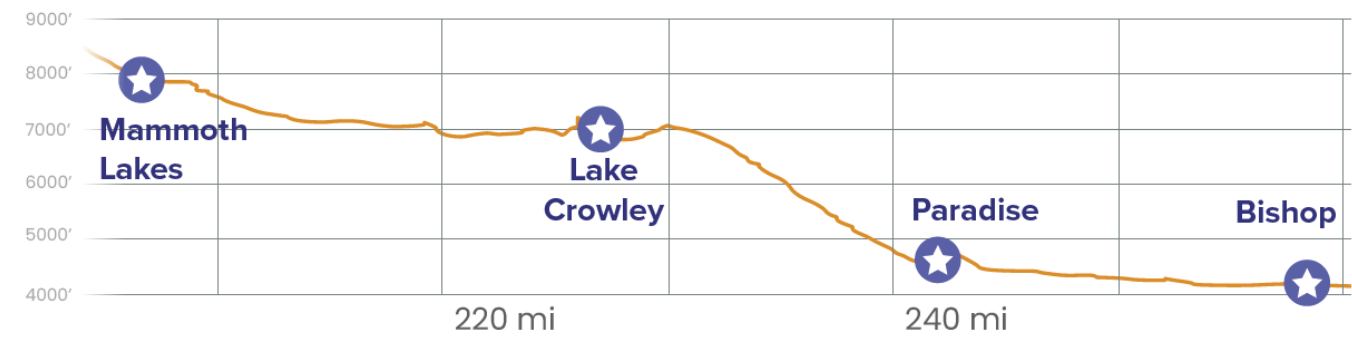
*Final alignment route is not suitable for through motorized use, allowed uses are subject to the approved uses of the relevant jurisdiction, refer to the jurisdiction for legal uses.





Mammoth Lakes to Bishop

Elevation Profile



Map Legend

Alignment

- Final Alignment*
- Alignment on Hwy 395
- Gap Areas

Alignment Surface Type

- Trail
- Double Track
- Unpaved Roads
- Paved Roads

Destinations

- Cities and Towns
- Campgrounds

Land Managers

- BLM
- LADWP
- USFS
- Other Federal Agency
- Non-Gov Organization
- Other State Agency
- County / Reg Agency
- City Land
- County Boundaries

Protected Lands

- USFS Wilderness Areas
- Sage Grouse Habitat Areas
- BLM Wilderness Study Areas
- BLM Areas of Critical Environmental Concern

Water Bodies

- Lakes and Reservoirs
- Streams, Rivers, and Canals

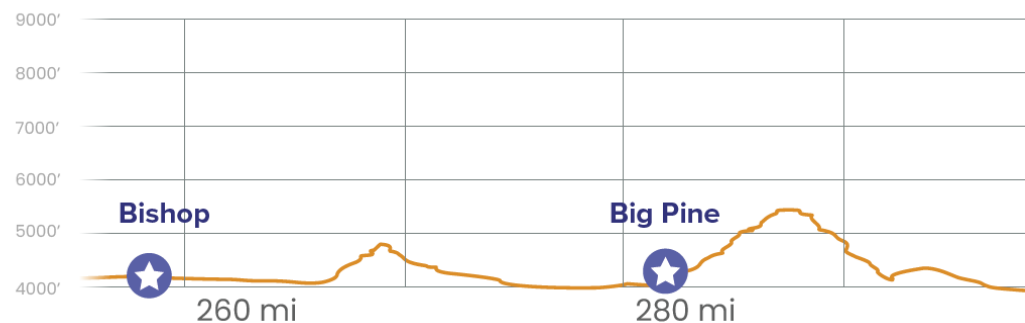
Developed Recreation Sites

- Important Connections

*Final alignment route is not suitable for through motorized use, allowed uses are subject to the approved uses of the relevant jurisdiction, refer to the jurisdiction for legal uses.



Elevation Profile



Alignment

- Final Alignment*
- Alignment on Hwy 395
- Gap Areas

Alignment Surface Type

- Trail
- Double Track
- Unpaved Roads
- Paved Roads

Destinations

- Cities and Towns
- Campgrounds

Land Managers

- BLM
- LADWP
- USFS
- Other Federal Agency
- Non-Gov Organization
- Other State Agency
- County / Reg Agency
- City Land
- County Boundaries

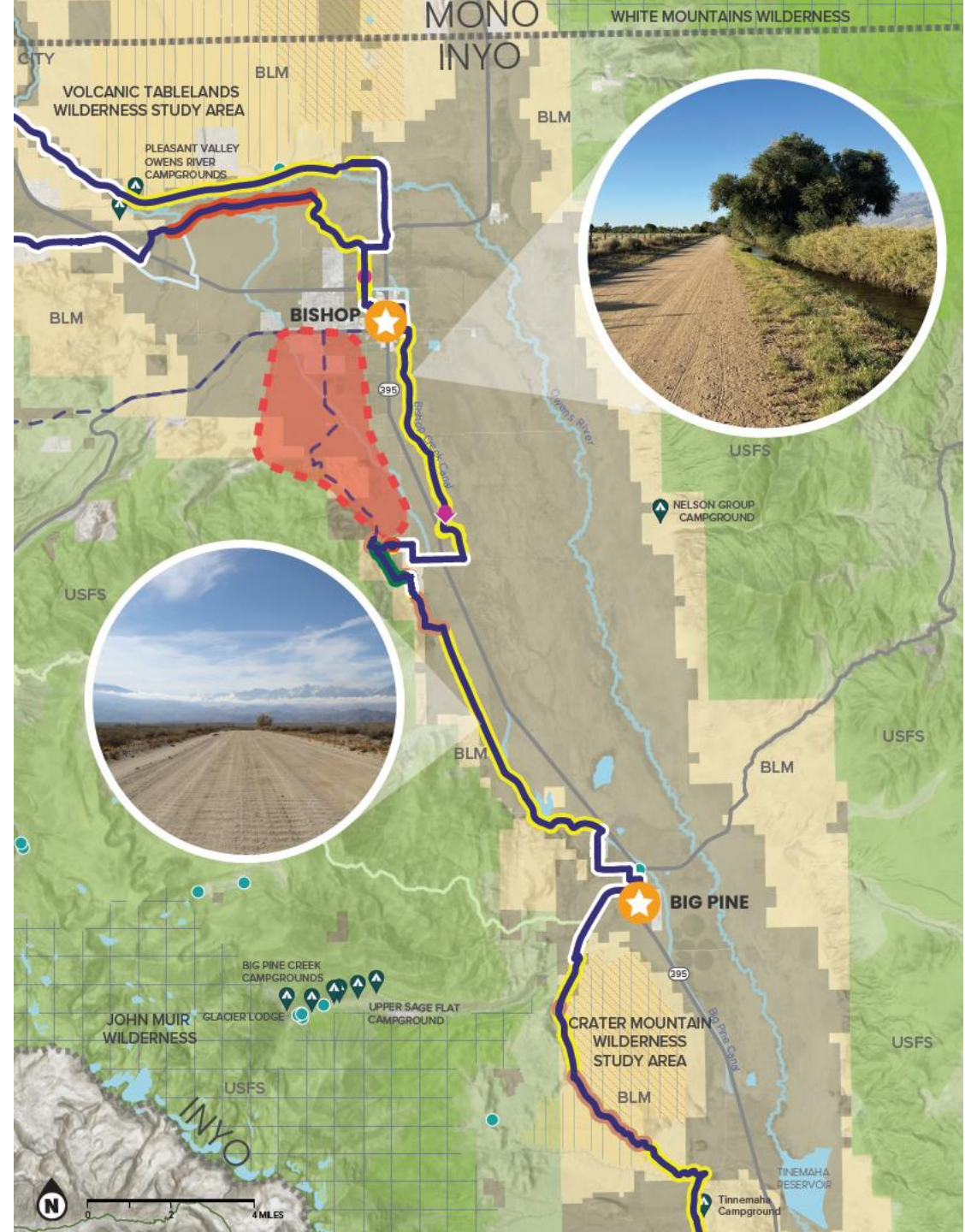
Protected Lands

- USFS Wilderness Areas
- Sage Grouse Habitat Areas
- BLM Wilderness Study Areas
- BLM Areas of Critical Environmental Concern

Water Bodies

- Lakes and Reservoirs
- Streams, Rivers, and Canals

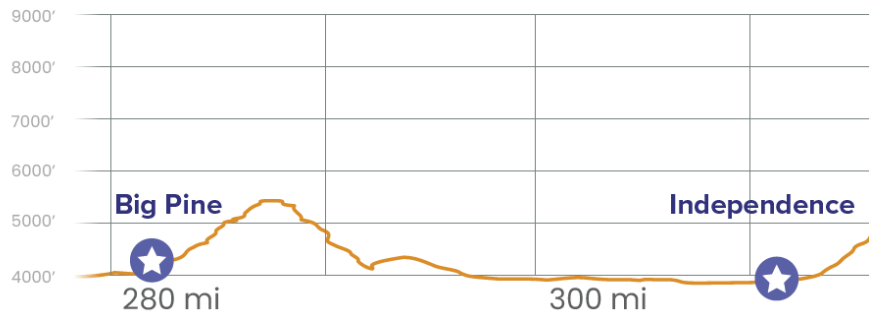
*Final alignment route is not suitable for through motorized use, allowed uses are subject to the approved uses of the relevant jurisdiction, refer to the jurisdiction for legal uses.





Big Pine to Independence

Elevation Profile



Map Legend

Alignment

- Final Alignment*
- Alignment on Hwy 395
- Gap Areas

Alignment Surface Type

- Trail
- Double Track
- Unpaved Roads
- Paved Roads

Destinations

- Cities and Towns
- Campgrounds

Land Managers

- BLM
- LADWP
- USFS
- Other Federal Agency
- Non-Gov Organization
- Other State Agency
- County / Reg Agency
- City Land
- County Boundaries

Protected Lands

- USFS Wilderness Areas
- Sage Grouse Habitat Areas
- BLM Wilderness Study Areas
- BLM Areas of Critical Environmental Concern

Water Bodies

- Lakes and Reservoirs
- Streams, Rivers, and Canals

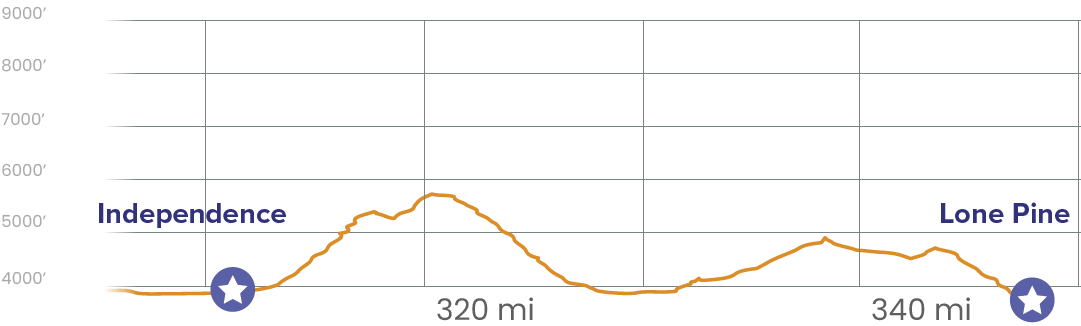
*Final alignment route is not suitable for through motorized use, allowed uses are subject to the approved uses of the relevant jurisdiction, refer to the jurisdiction for legal uses.





Independence to Lone Pine

Elevation Profile



Map Legend

Alignment

- Final Alignment*
- Alignment on Hwy 395
- Gap Areas

Alignment Surface Type

- Trail
- Double Track
- Unpaved Roads
- Paved Roads

Destinations

- Cities and Towns
- Campgrounds

Land Managers

- BLM
- LADWP
- USFS
- Other Federal Agency
- Non-Gov Organization
- Other State Agency
- County / Reg Agency
- City Land
- County Boundaries

Protected Lands

- USFS Wilderness Areas
- Sage Grouse Habitat Areas
- BLM Wilderness Study Areas
- BLM Areas of Critical Environmental Concern

Water Bodies

- Lakes and Reservoirs
- Streams, Rivers, and Canals

Other Symbols

- Developed Recreation Sites
- Important Connections

*Final alignment route is not suitable for through motorized use, allowed uses are subject to the approved uses of the relevant jurisdiction, refer to the jurisdiction for legal uses.





XXX



XXX



XXX



XXX

