



2025 End of Winter Season Trail Counter Report

Methodology

There are two types of counters that are deployed and regularly maintained, infrared and vehicle counters.

- **Infrared counters** are used to count individuals.
 - Infrared counters that are stationed at the start of trailheads will likely include people passing going onto the trail and coming off.
 - While most locations operate smoothly without complications, occasionally counters are disrupted by weather, battery issues, and unfortunately human disturbances. A handful of locations are favorited by some individuals where they stuff the counter housing boxes which prevents the sensor from working. In winter, this seems to be much less of an issue, but it did occur.
- **Vehicle counters** are used to count vehicles.
 - There are 2 vehicle counters deployed, one at the entrance to Shady Rest Park and the other at the start of the Sherwin's Meadow Parking Lot.
 - These are set with a radius to hopefully only catch one side of the road, although Shady Rest Park counter's radius might catch both directions.

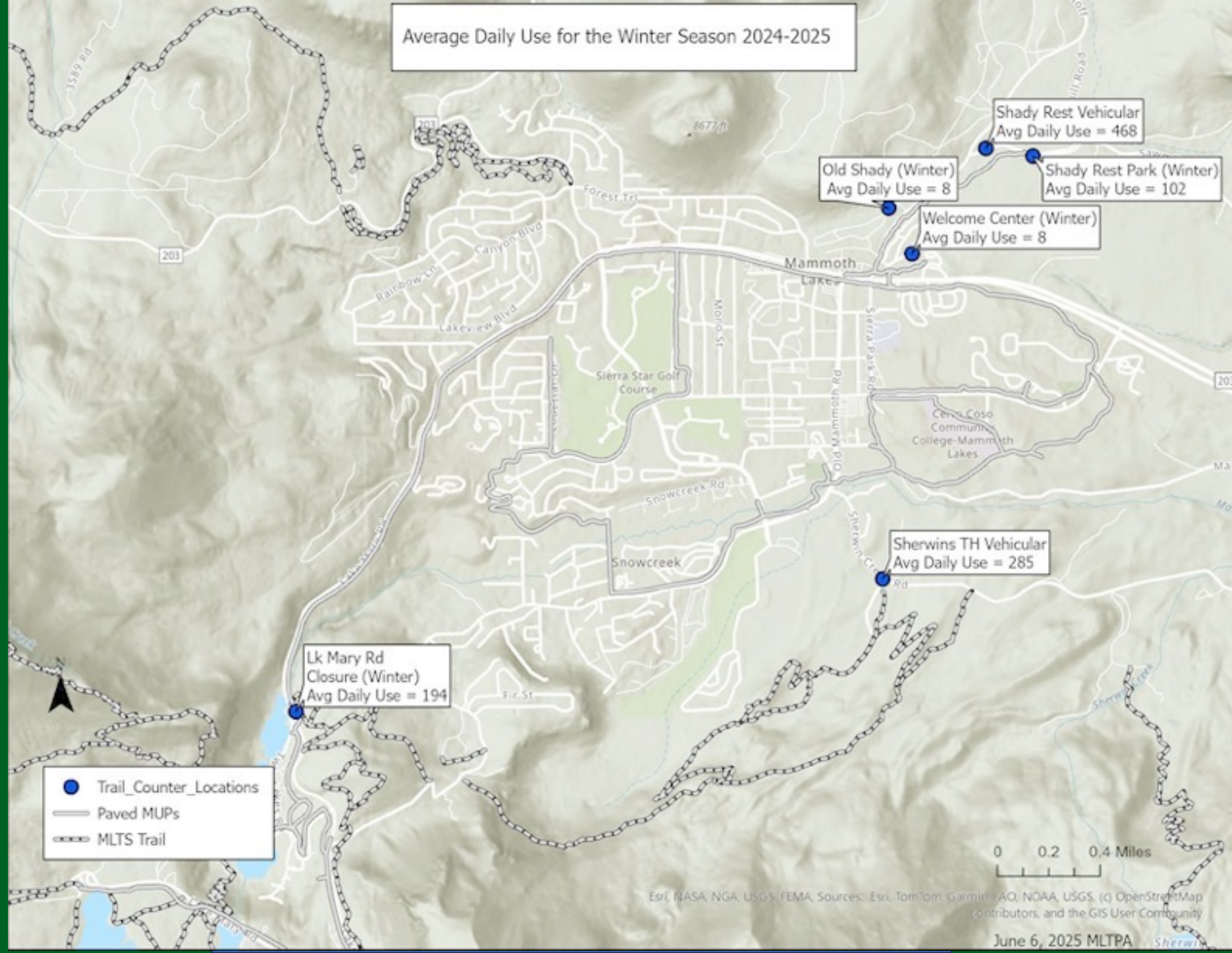
History

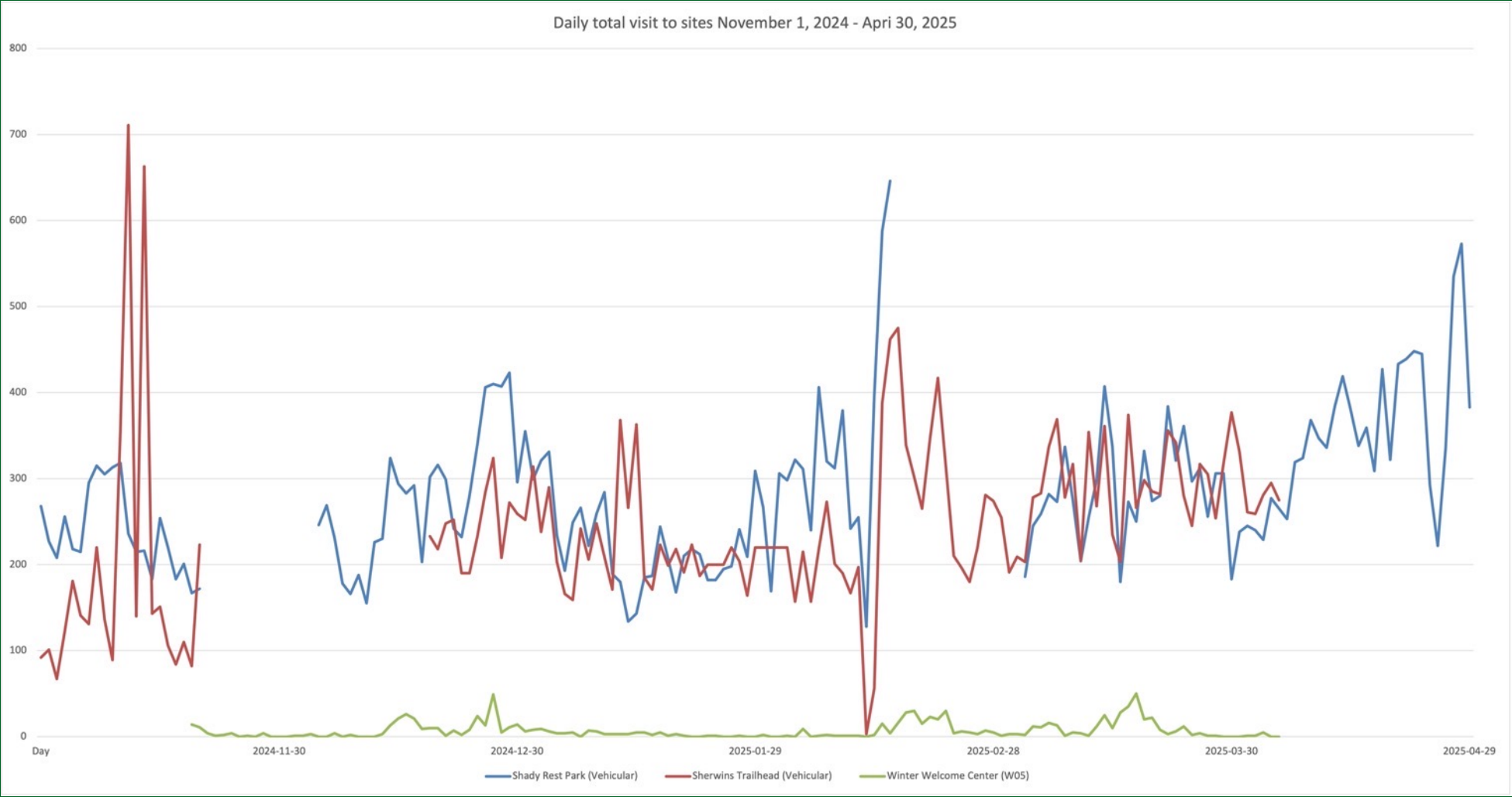
The trail counter program was initiated by MLTPA in 2012.

Since 2017, roughly 30 infrared TRAFx trail counters are installed each summer at various trailheads and along Multi Use Pathways throughout the Town of Mammoth Lakes. In winter there are only 5 infrared TRAFx trail counters, one of which is a year round Visitor Center counter, as well as two year round vehicle counters.

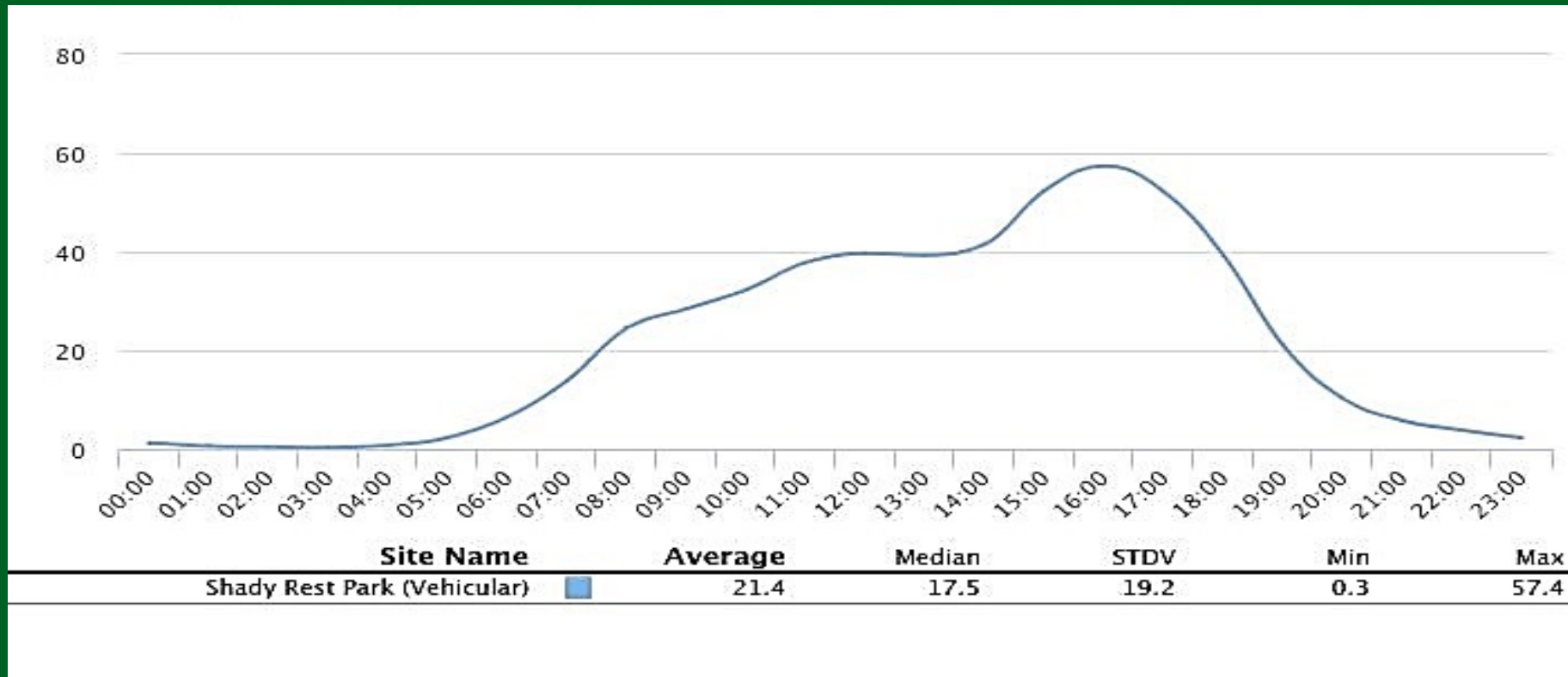
Winter 24/25 was my first season in charge of deploying, maintaining, and collecting the data that these trail counters collect. The most challenging aspect this season was getting the Sherwin TH counter repositioned. Given the warm weather between relatively benign storms for the Sierra, finding counters was mostly a non issue.

Average Daily Use for the Winter Season 2024-2025

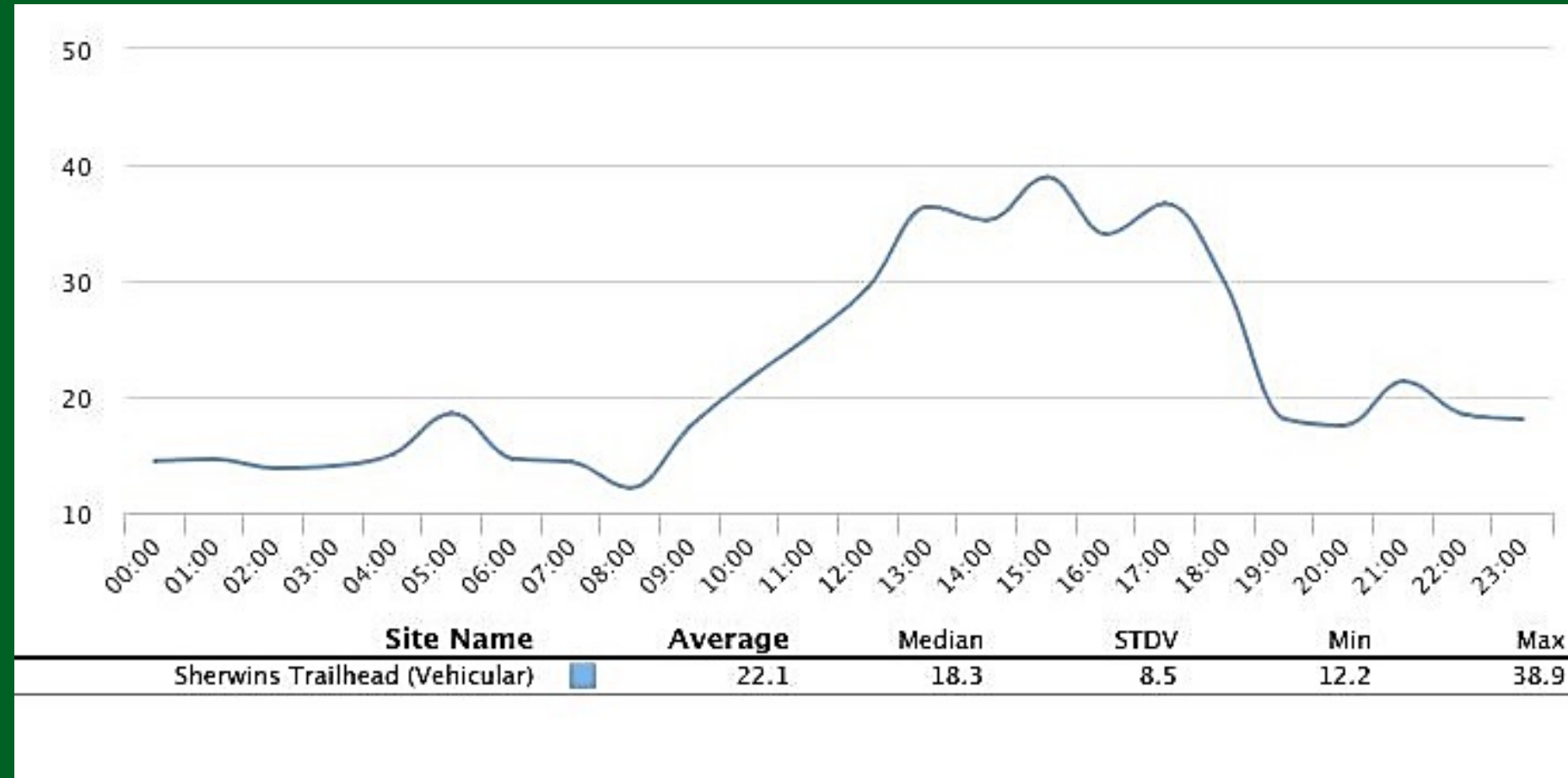




Shady Rest Hourly Data November to May



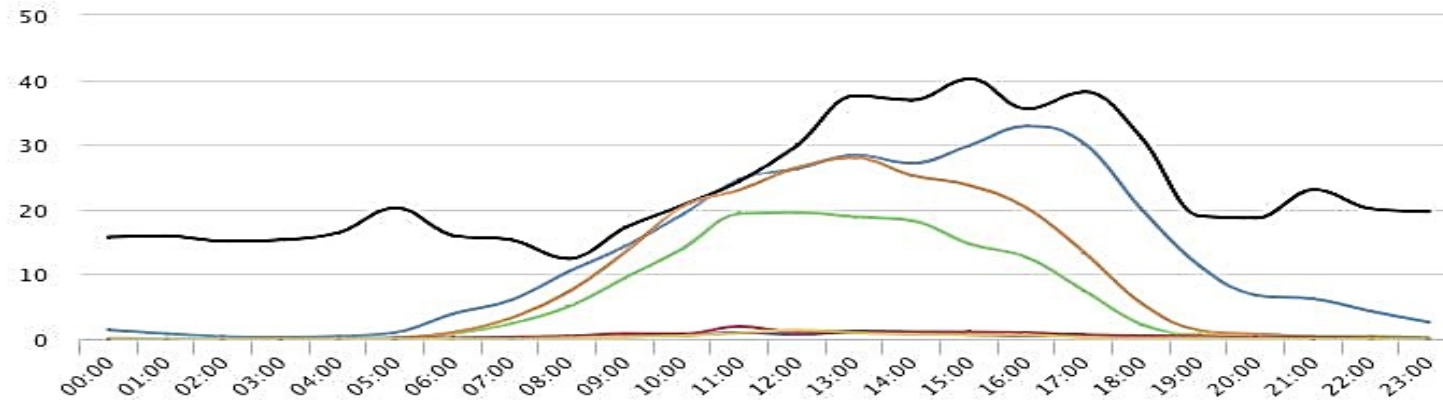
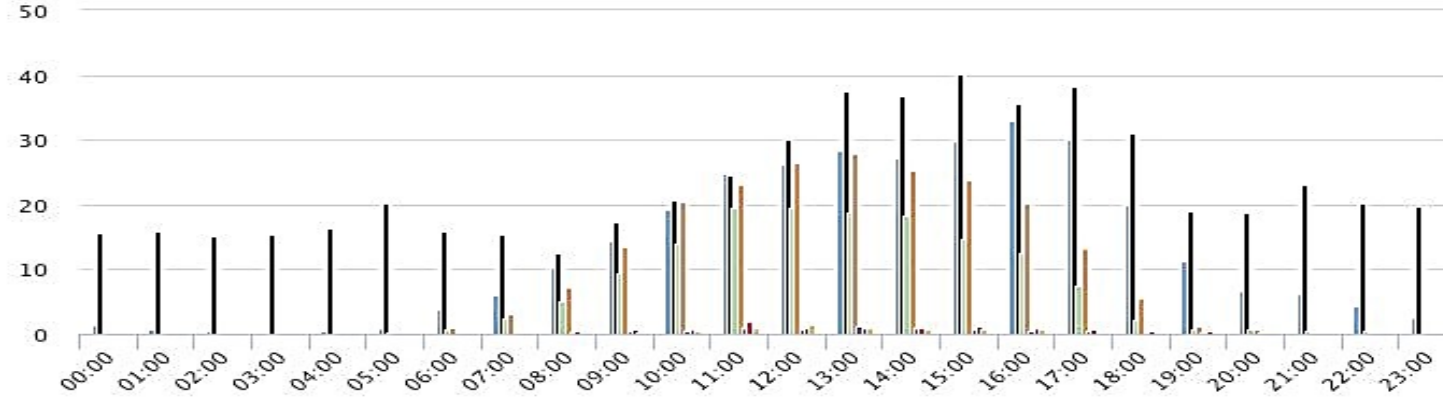
Sherwins Hourly Data November through April



Hours of the day

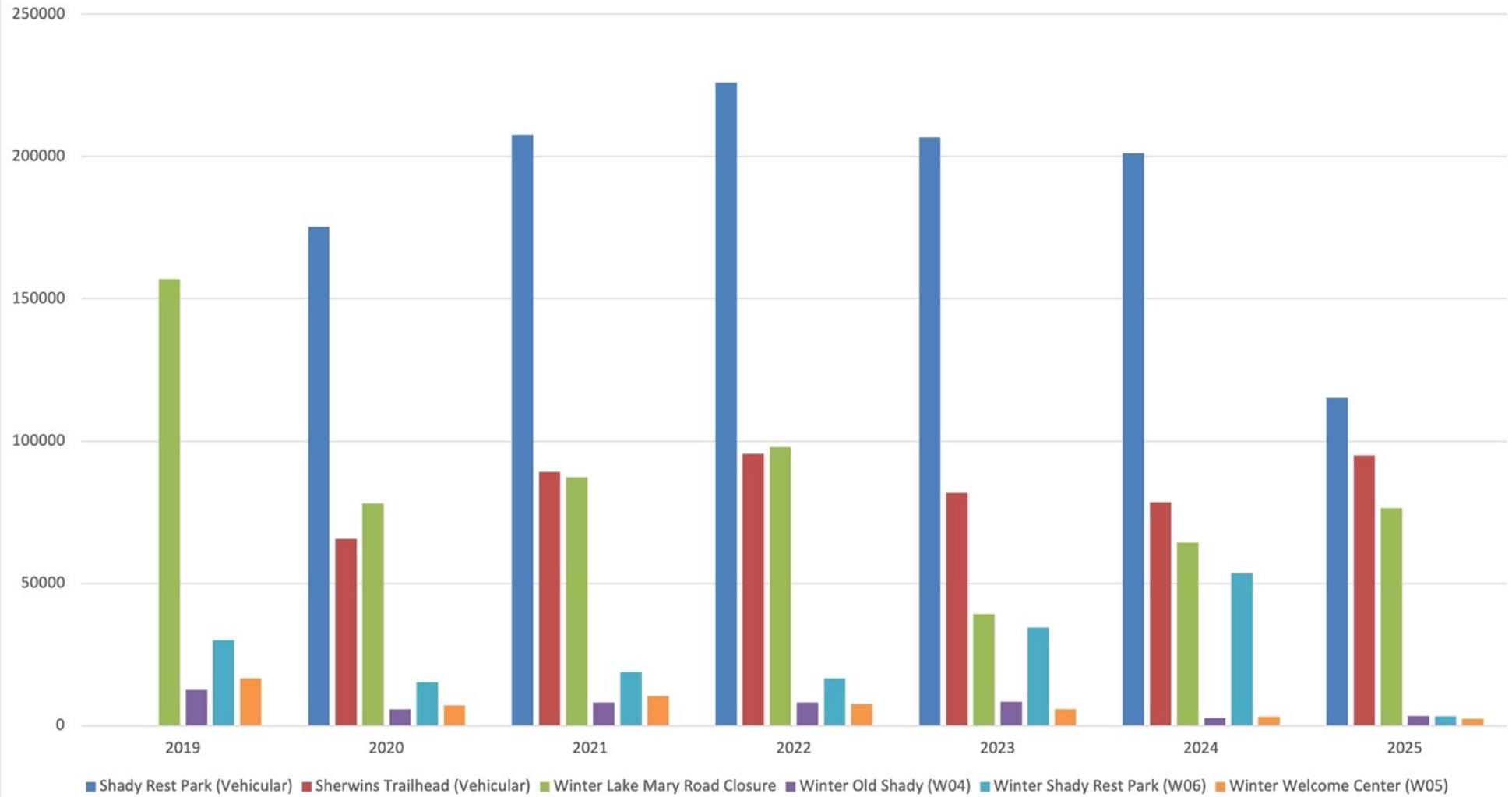
2024-11-21 to 2025-05-12

Hourly averages



Site Name	Average	Median	STDV	Min	Max
Shady Rest Park (Vehicular)	12.9	8.6	11.4	0.2	32.9
Sherwins Trailhead (Vehicular)	23.1	19.9	8.6	12.4	40.2
Welcome Center (yearround)	6.1	1.5	7.3	0.0	19.5
Winter Lake Mary Road Closure	8.9	2.3	10.4	0.0	28.0
Winter Old Shady (W04)	0.3	0.1	0.4	0.0	1.2
Winter Shady Rest Park (W06)	0.5	0.3	0.5	0.0	1.9
Winter Welcome Center (W05)	0.3	0.1	0.4	0.0	1.4

Totals by site November 1 - April 30th



End of Season Summary

The 2025 Winter season was a very normal season after a very normal snow year. Nothing impacted the start of the trail counter program, so all sites were active by the end of November. Data showed continued high use at many of the popular sites and similar year over year usage at most of the sites. Some notable events, such as the construction at the Sherwin Parking area, are evident in the counter data. The data shows that recreation has been fairly consistent the last couple of years post Covid. Unsurprisingly, lower snow years affect the areas around Shady Rest, most likely due to a lack of being able to groom trails.





Any
Questions?

