

# Community Service Area 1

## CSA1 Trails

### 1) CSA1 Overview, Planning, & Goals

### 2) Trail Planning Efforts

- Short Term (1-2 years)
- Mid Term (2-10 years)
- Long Term (10-20 years)
- Partners / Next steps
- Info

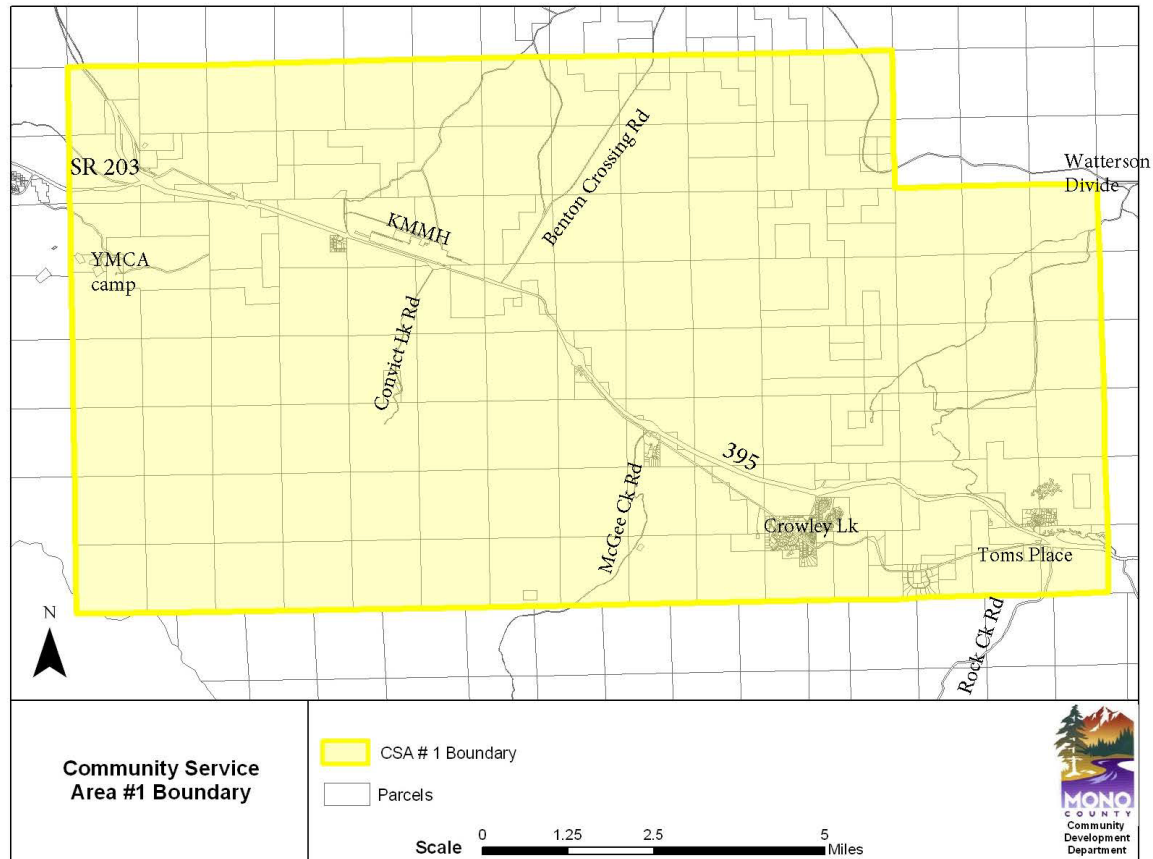


# CSA1 Trails

## Overview CSA1

- CSA1 is a dependent district of Mono County Government servicing CSA1 residents (Long Valley, McGee Creek, Crowley Lake, Aspen Springs, Toms Place/Sunny Slopes)
- The initial trail efforts will be adjacent to our communities
  - ✓ for residents and visitors,
  - ✓ future trails will connect communities, existing recreational infrastructure, and
  - ✓ provide additional economic benefit to area businesses
- The Mono County Sustainable Outdoors and Recreation (MCSOAR) program is a fundamental part of this effort
- All concepts are on federal land and some bisect city land (LADWP)

# CSA1 Boundary



# CSA1 Trails

## Goals CSA1 Trails Planning Efforts

### **Goals**

- Support and advance new multi-use trails for all non-motorized users
- Build 50 miles of new trails within CSA 1 Boundaries
- Utilize existing public facilities (parks, campgrounds, trailheads, parking areas) as access nodes and tie trails into these facilities

### **Financial**

- CSA1 will pay for design, permitting, construction & on-going maintenance

# CSA1 Trails

Short Term (1-2 yrs)

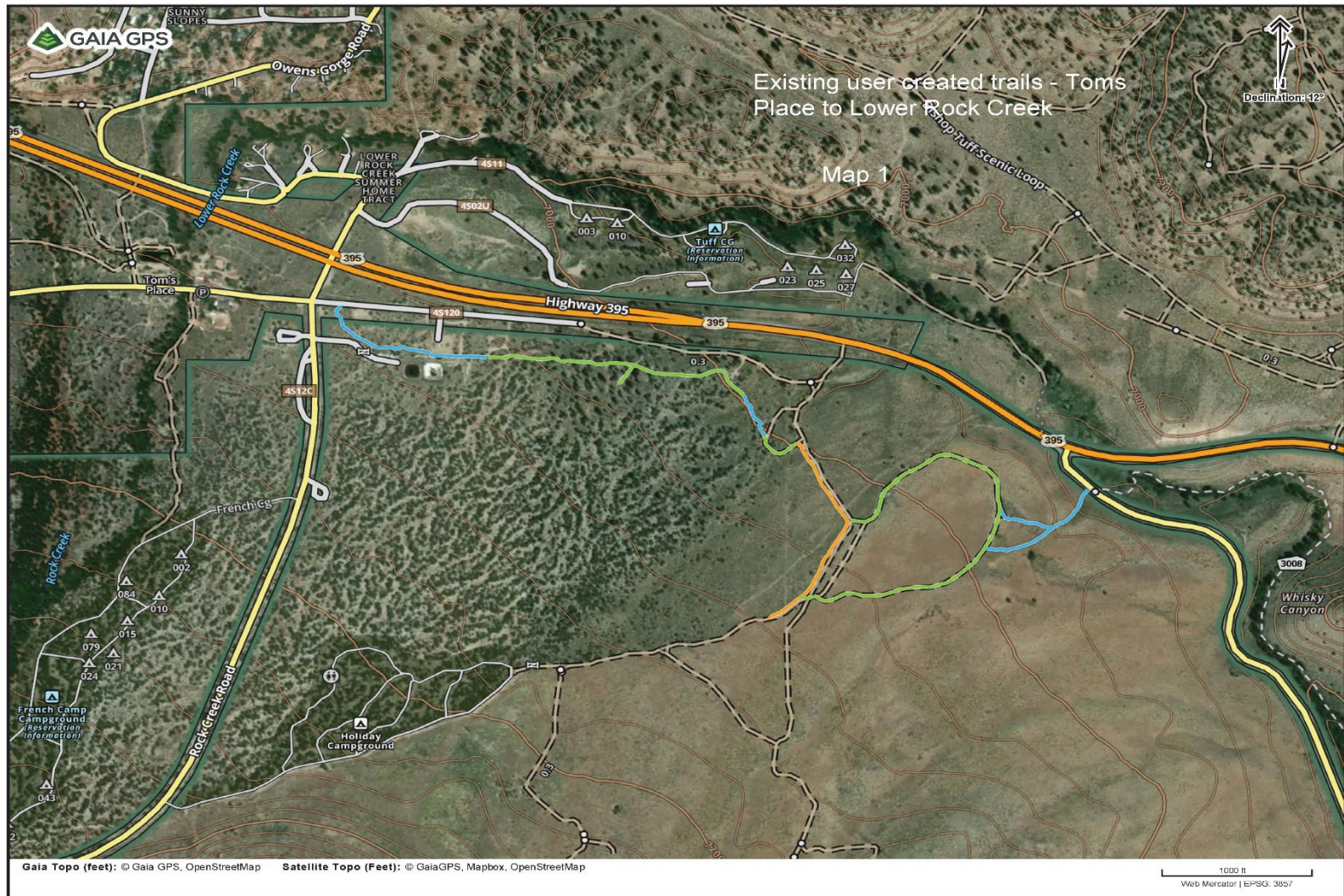
Toms Place connector & Hilton/BLM trails

- 1) Approximately 1.3 to 1.6 miles of user trail, existing Forest Service roads and or utility easements
- 2) existing 1.3 mile trail from the Hilton Creek Trailhead, west above the Crowley Lake BLM Campground



# CSA1 Trails

## Toms Place to Lower Rock Creek connector





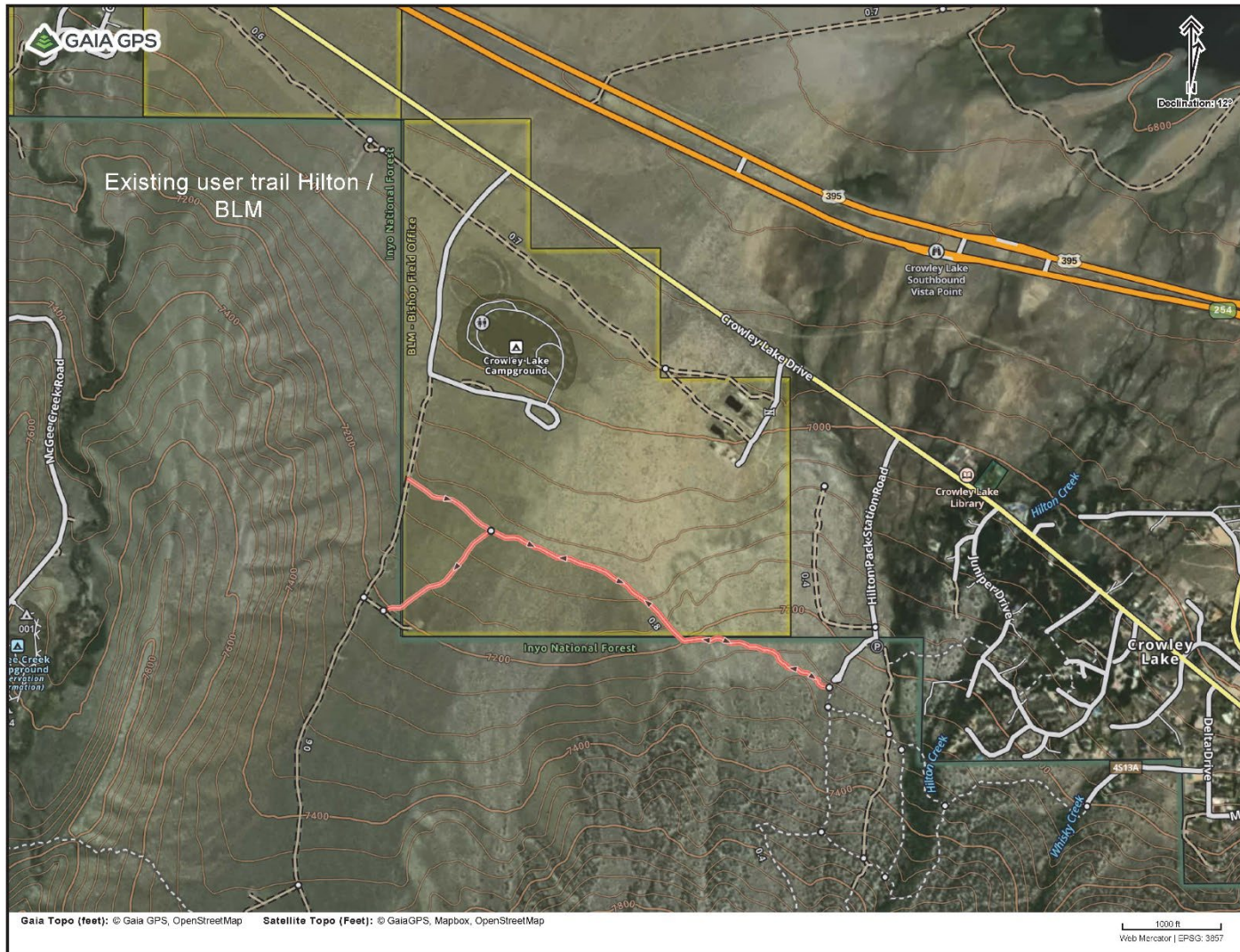
# Toms Place to Lower Rock Creek connector





# CSA1 Trails

## Hilton / BLM trail





# Hilton / BLM trail







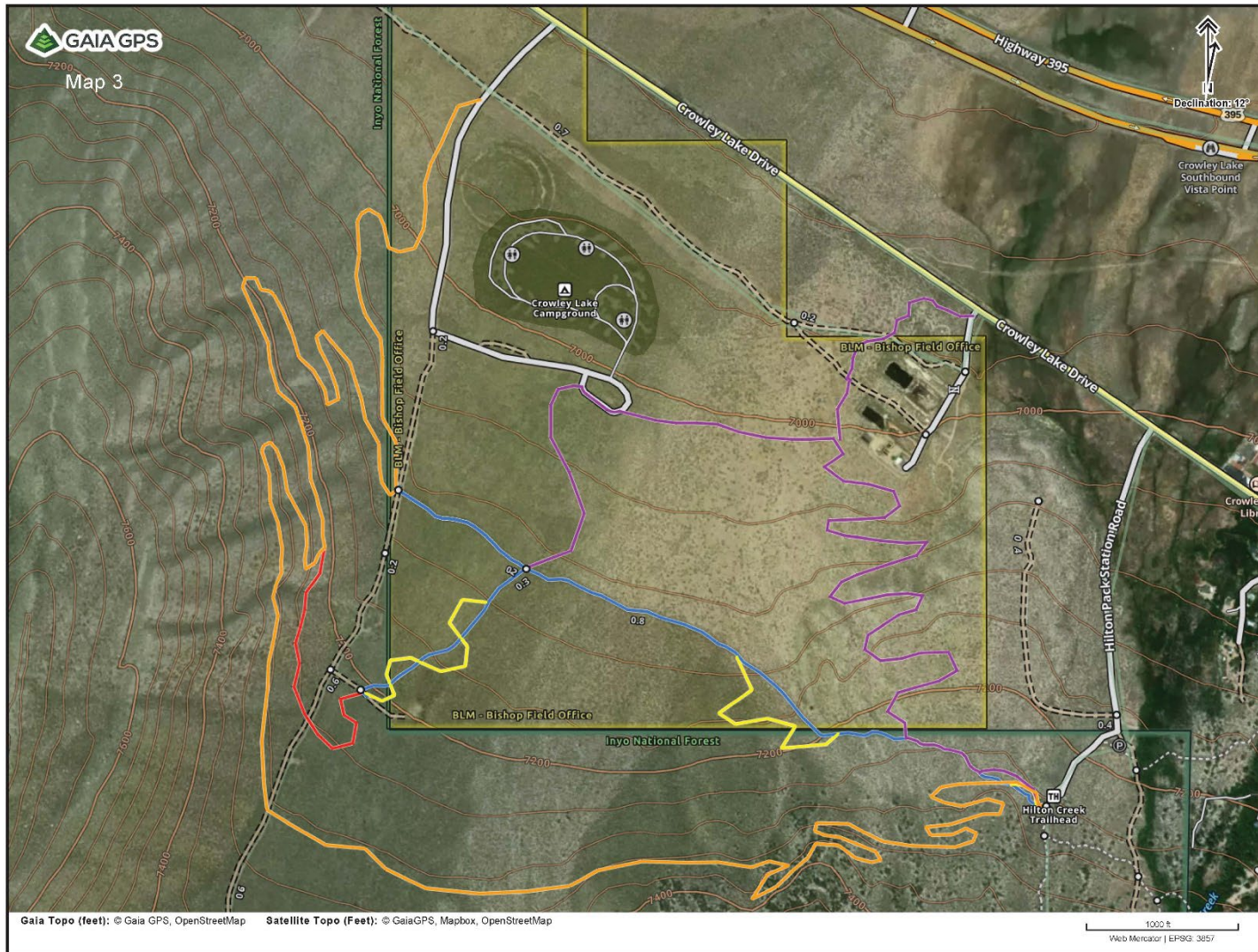
# CSA1 Trails

Mid Term (2-10 yrs)  
conceptual

The glacial moraines of Rock Creek, Hilton Creek, McGee Creek, and Convict Creek are great areas to build a stacked loop system close to our communities and or campgrounds.

# CSA1 Trails

Mid Term expansion – only conceptual





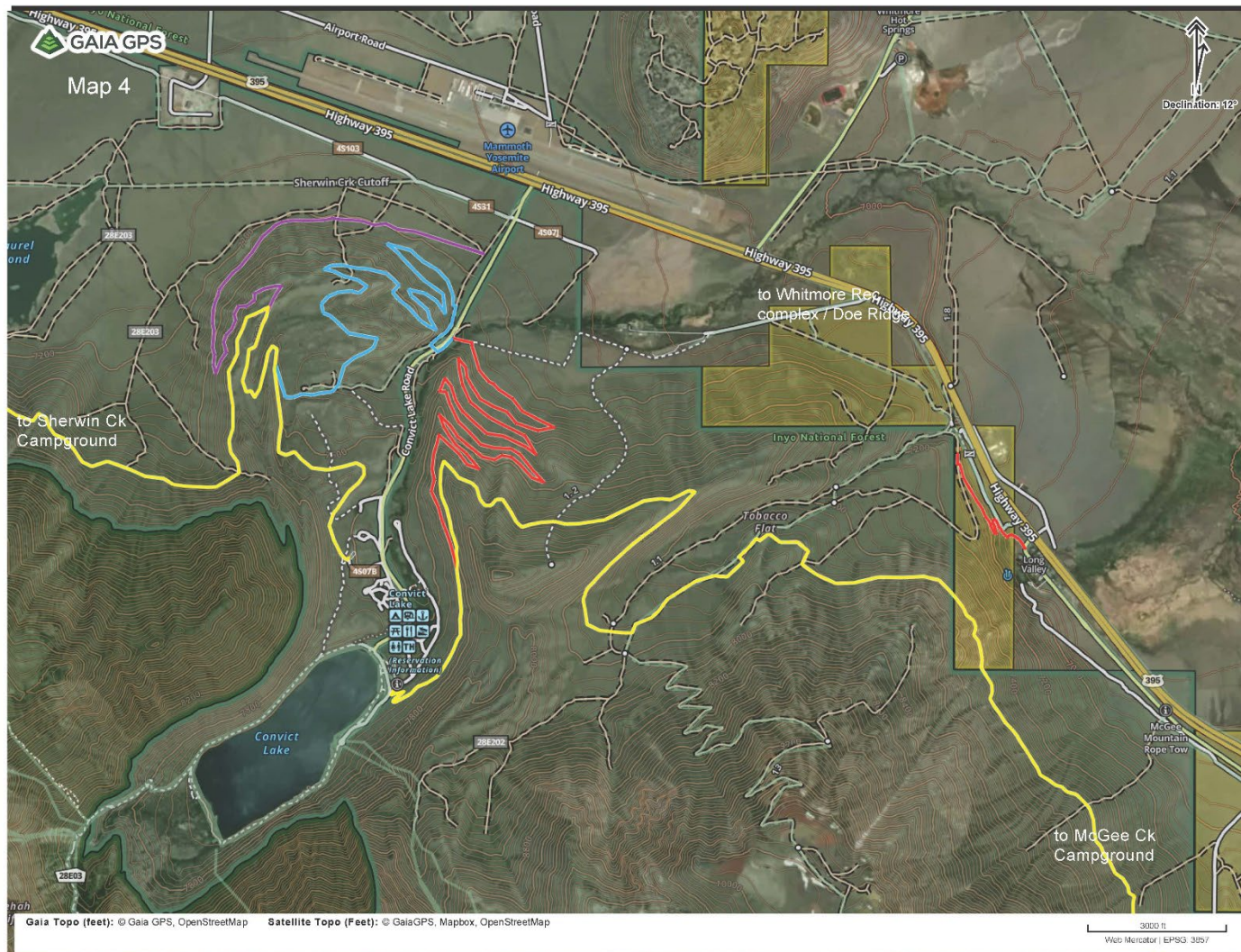
# CSA1 Trails

## Long Term (10-20 yrs)

- A long range goal would be to link Mammoth Lakes to Toms Place
- Non-motorized multi-use trail following the 7,600 foot contour
- The 7,600 contour trail concept – feasibility is unknown
  - ✓ environmental costs and constraints,
  - ✓ costs to build and maintain, and
  - ✓ public support and or opposition

# CSA1 Trails

7,600 foot trail in yellow – Convict Lake Area - conceptual



# CSA1 Trails

## Regional Partners / Next Steps

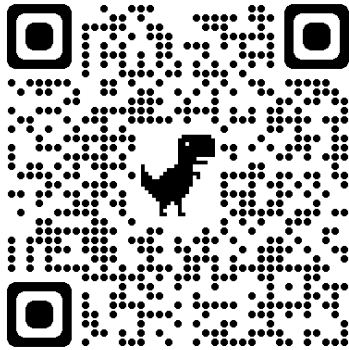
- Board of Supervisors support with Sustainable Outdoors and Recreation program,
- Federal Land Managers, INF & BLM
- LADWP, Tribes, TOML, ESCOG
- user groups, clubs, & non-profits,
- Hopefully, future construction, re-routes, signage (1<sup>st</sup> two existing trails)

## Future

- Additional trails for Hilton Creek and McGee Creek moraines,
- 7,600 foot contour trail as long term project
- Link into regional efforts - Towns to Trails, others



# More Info



Instagram - eastsidetrails

Email address:  
eastsidetrailassociation@gmail.com

Join us!  
Help us spread the  
word.



CSA1 webpage

<https://monocounty.ca.gov/csa1>

# Questions

Thank you!

